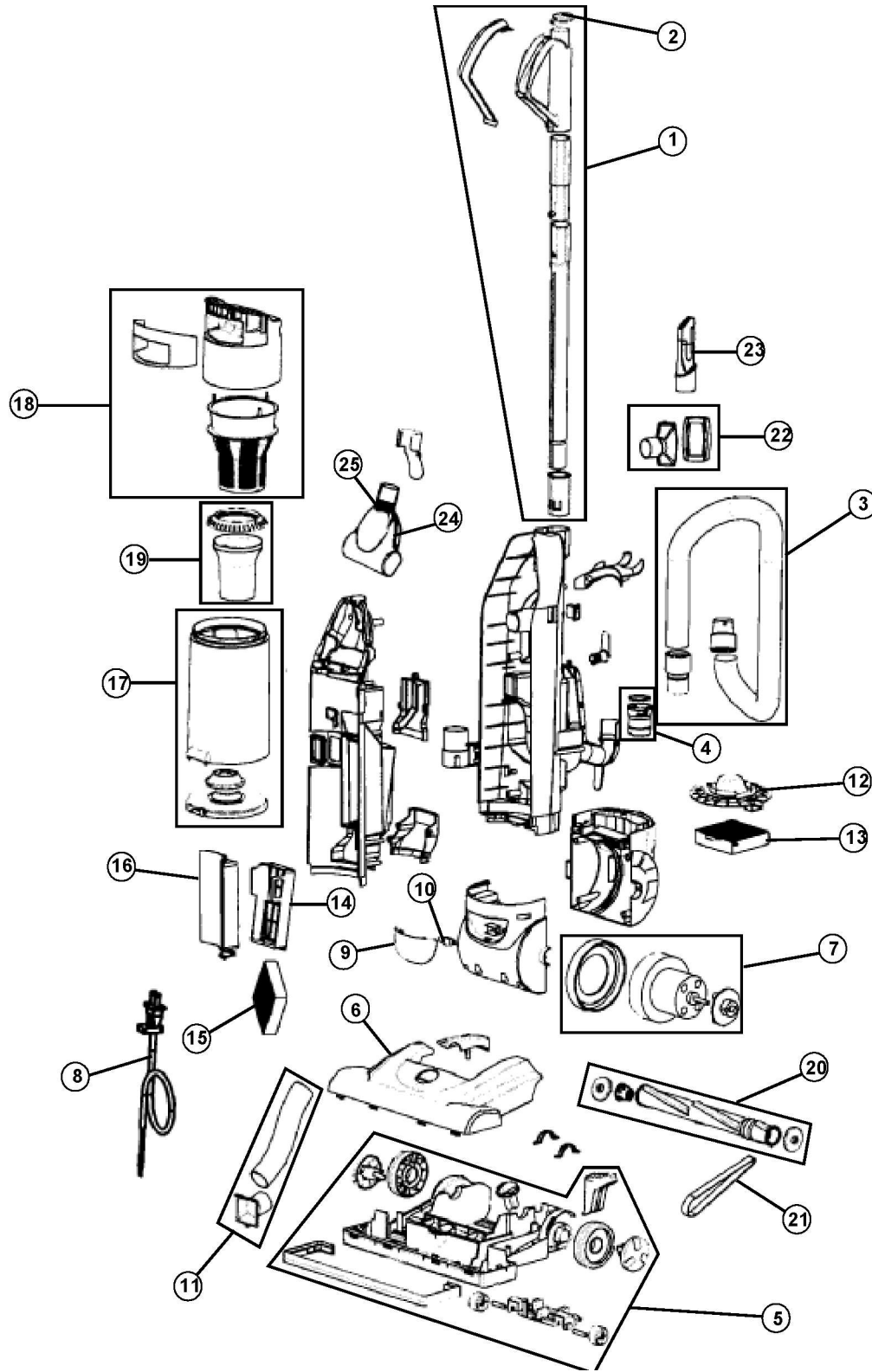


ASSEMBLY SCHEMATIC

MODEL NO.

120000



PART LISTING

MODEL NO.

120000

| Item | Part Number | Model's to Fit | Part Description |
|------|-------------|----------------|--------------------------------------|
| 1 | 2JZ0650000 | 120000 | HANDLE ASSEMBLY |
| 2 | 1JZ0670000 | 120000 | HANDLE CAP |
| 3 | 2JZ0580000 | 120000 | UPPER HOSE ASSEMBLY |
| 4 | 2JZ0500000 | 120000 | UPPER HOSE CONNECTOR WITH GASKET |
| 5 | 2JZ0150000 | 120000 | NOZZLE BASE ASSEMBLY |
| 6 | 2JZ0160000 | 120000 | NOZZLE COVER |
| 7 | 2JZ0300000 | 120000 | MOTOR ASSEMBLY |
| 8 | 1JZ0565000 | 120000 | POWER CORD |
| 9 | 1JZ0310000 | 120000 | LENS COVER |
| 10 | 1JZ0315000 | 120000 | LIGHT BULB |
| 11 | 1JZ0205000 | 120000 | LOWER HOSE |
| 12 | 1JZ0360000 | 120000 | EXHAUST FILTER COVER |
| 13 | 2JZ0380000 | 120000 | F-23 EXHAUST HEPA FILTER |
| 14 | 2JZ0475000 | 120000 | AIR INLET FILTER FRAME ASSEMBLY |
| 15 | 1JZ0485000 | 120000 | AIR INLET FOAM FILTER |
| 16 | 1JZ0465000 | 120000 | AIR INLET FILTER COVER |
| 17 | 2JZ0090000 | 120000 | DIRT CUP ASSEMBLY |
| 18 | 2JZ0010000 | 120000 | DIRT CIP LID WITH CYCLONE ASSEMBLY |
| 19 | 1JZ0085000 | 120000 | INNER DIRT CUP LOWER TUBE WITH SKIRT |
| 20 | 2JZ0220000 | 120000 | BRUSH ROLL ASSEMBLY |
| 21 | 1JZ0900000 | 120000 | STYLE 20 BELT |
| 22 | 2JZ0610000 | 120000 | DUST BRUSH ASSEMBLY |
| 23 | 1JZ0605000 | 120000 | CREVICE TOOL |
| 24 | 2UTT000000 | 120000 | TURBO TOOL ASSEMBLY |
| | 1UTT020000 | 120000 | BELT - TURBO TOOL |
| 25 | 1UTT030000 | 120000 | TURBO TOOL LOCK NUT RING |