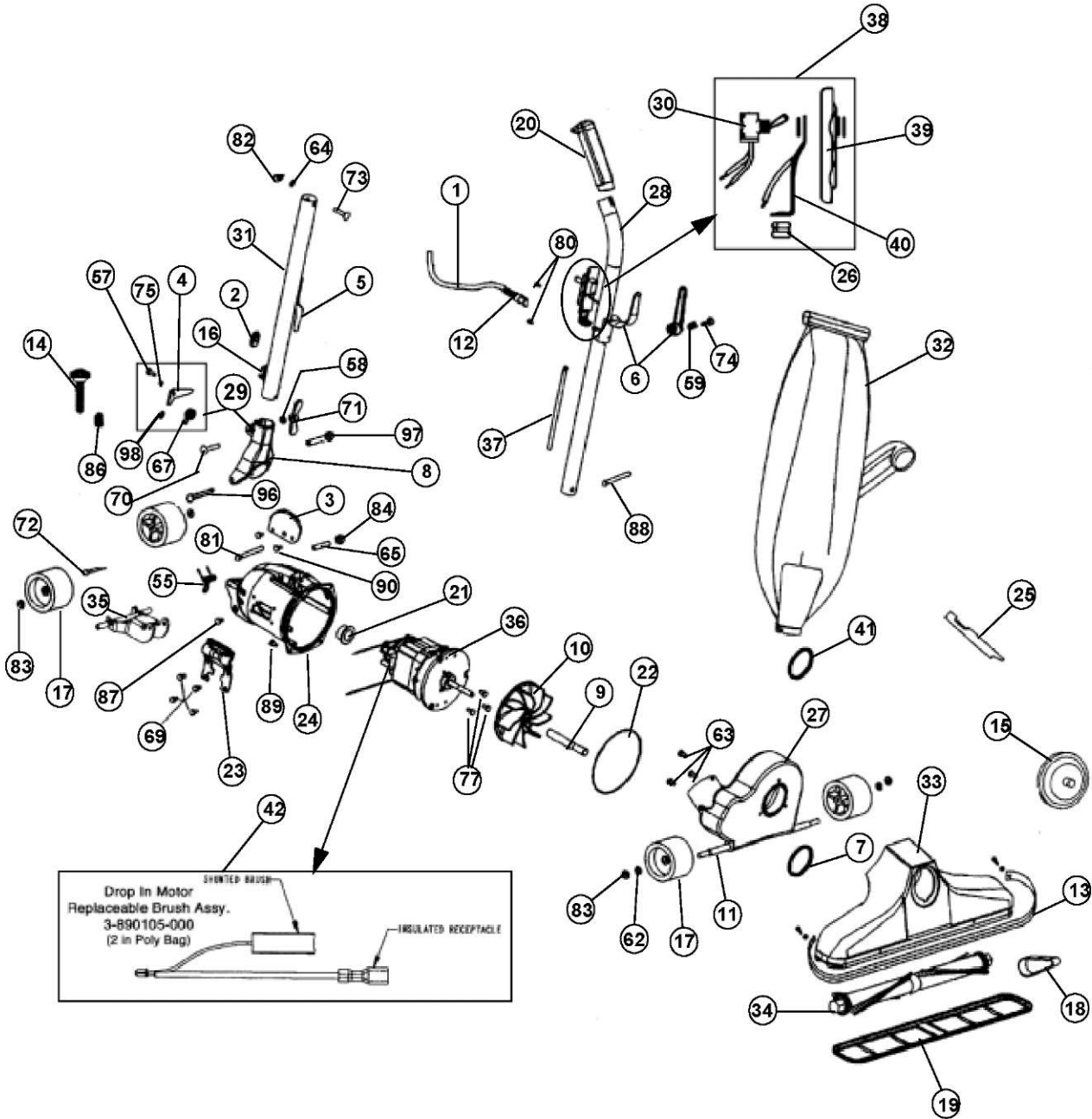


ASSEMBLY SCHEMATIC

1028 (Z)
CR5128 (Z)





METAL UPRIGHTS

1028 (Z)
CR5128 (Z)

ITEM	PART NUMBER	MODELS TO FIT	PART DESCRIPTION
1	1061136AU0	ALL	CORD 50' / 3 WIRE - ORANGE
2	1230324000	ALL	GROMMET
3	1133716000	1028, 1028Z	HANDLE STOP PLATE - CAN USE 440001675
	440001675	CR5128, CR5128Z	HANDLE STOP PLATE
4	1133739B00	ALL	HANDLE RELEASE LEVER - REVISED UNITS MFG 12/2010 AND NEWER MUST USE SCREW 440001674
5	1259316000	ALL	CORD HOOK - LOWER
6	1259317000	ALL	CORD HOOK - UPPER RIVETED
	1259319000	ALL	CORD HOOK - UPPER QUICK RELEASE
7	1285427000	ALL	GASKET - NOZZLE
8	1028590000	1028, 1028Z	HANDLE FORK REVISED - POLISHED MFG PRIOR TO 12/2010
	440001673	1028, 1028Z	HANDLE FORK REVISED - POLISHED MFG 12/2010 AND NEWER MUST USE SCREW 440001674
	440001673	CR5128, CR5128Z	HANDLE FORK POLISHED
9	1380261000	ALL	SHAFT EXTENSION
10	1608005000	ALL	FAN - SLIP ON
11	1611101000	ALL	AXLE STUD
12	1611305000	ALL	STRAIN RELIEF - POWER CORD
13	1801201A00	ALL	BUMPER - BLUE BLACK NLA
14	1870012000	ALL	ADJUSTMENT BOLT
15	2080169600	ALL	ADJUST-O-RITE PLATE WITH KNOB - BLACK
16	1670844600	ALL	CORD CLIP
17	1671705000	ALL	WHEEL
18	1672260001	ALL	BELT
19	1672270000	ALL	NOZZLE GUARD - 14"
20	1880314600	ALL	HANDLE GRIP - BLACK
21	1870006600	ALL	GROMMET - MOTOR
22	1870024600	ALL	MOTOR HOUSING O-RING
23	1870130P00	ALL	SIDE PLATE
24	1870201000	ALL	MOTOR HOUSING
25	1880262000	ALL	BELT LIFTER
26	1880304000	ALL	STRAIN RELIEF - INTERNAL CORD
27	2670116000	ALL	FANCASE ASSEMBLY - POLISHED



METAL UPRIGHTS

1028 (Z)
CR5128 (Z)

ITEM	PART NUMBER	MODELS TO FIT	PART DESCRIPTION
28	2891051600	1028, 1028Z	UPPER HANDLE - INCL #6, #20 QUICK RELEASE - POLISHED / CAN only BE USED WITH 2208590000 LOWER HANDLE
	440001676	CR5128, CR5128Z	UPPER HANDLE - INCL #6, #20 QUICK RELEASE - POLISHED / CAN only BE USED WITH 440001677 LOWER HANDLE
29	2028590000	1028, 1028Z	HANDLE FORK & LATCH ASSEMBLY - POLISHED REVISED 12/2010 WITH HANDLE FORK 440001673
30	1163302000	ALL	SWITCH
31	2208590000	1028, 1028Z	LOWER HANDLE TUBE - INCL #5, #16 REVISED - POLISHED / CAN only BE USED WITH 2891051600 UPPER HANDLE
	440001677	CR5128, CR5128Z	LOWER HANDLE TUBE - Incl #5, #16 - POLISHED / CAN only BE USED WITH 440001676 UPPER HANDLE
32	2066248BG0	1028, CR5128	SHAKE OUT BAG ASSEMBLY - ORANGE
	2066242AU1	1028Z, CR5128Z	ZIPPER HINGED BAG ASSEMBLY - ORANGE
33	9061126B00	ALL	NOZZLE ASSEMBLY - INCLS #13
34	2673273000	ALL	BRUSH ROLL ASSEMBLY
35	2028574000	ALL	REAR WHEEL FORK/AXLE ASSEMBLY - SCREW
36	2870114000	ALL	MOTOR W/REPLACEABLE BRUSHES 8.0 - 10.0 AMP
37	3870323600	ALL	SHORT CORD & LUG ASSEMBLY
38	2060837000	ALL	SWITCH & PLATE ASSEMBLY
39	1608303000	ALL	SWITCH PLATE
40	2031103000	ALL	STRAIN RELIEF STAMPING
41	1604108000	ALL	RUBBER INLET GASKET
42	3890105000	ALL	CARBON BRUSH PKG - DROP IN MOTORS
	3970109000	ALL	CARBON BRUSH PKG - JOHNSON DROP IN



METAL UPRIGHTS

HARDWARE LISTING

ITEM	PART NUMBER	MODELS TO FIT	PART DESCRIPTION
55	1003008000	ALL MODELS	WHEEL FORK SPRING
56	1003009000	N/A	ROD SPRING
57	1003022000	ALL MODELS EXCEPT: CR5128, CR5128Z, CR5130, CR5130Z, CR5158, CR5158Z	LATCH RETAINER SCREW MFG PRIOR TO 2006
	1211321000	ALL MODELS EXCEPT: CR5128, CR5128Z, CR5130, CR5130Z, CR5158, CR5158Z	LATCH RETAINER SCREW - REVISED MFG 2006 TO12/2010
	440001674	ALL MODELS	LATCH RETAINER SCREW - REVISED ALLEN DRIVE 10-32 X .62 MFG 12/2010 AND AFTER
	440001674	CR5128, CR5128Z, CR5130, CR5130Z, CR5158, CR5158Z	LATCH RETAINER SCREW - REVISED ALLEN DRIVE 10-32 X .62
58	1003311000	ALL MODELS	WASHER ADAPTOR CLAMP SCREW - HANDLE FORK
59	1003884000	ALL MODELS	SPRING - UPPER CORD HOOK QUICK RELEASE
60	1006318000	N/A	LOCK WASHER
61	1004723000	ALL MODELS	HANDLE FORK SPRING
62	1005138000	ALL MODELS	WHEEL RETAINER WASHER
63	1023309000	ALL MODELS	SCREW #10-24 X 3/4" - FANCASE
64	1074330000	ALL MODELS	LOCK WASHER - HANDLE TUBE
65	1110773000	ALL MODELS	MOTOR HOUSING INSERT
66	1110775000	N/A	ROD ADJUSTMENT SLEEVE - SCREW IN
67	1133738000	ALL MODELS	HANDLE LATCH SPRING
68	1UA0305000	N/A	SCREW #6-32 X 3/8
69	1186012000	ALL MODELS	SELF TAPPING SCREW - SIDE PLATE
70	1230713000	ALL MODELS	CARRIAGE BOLT, HANDLE FOR NEW VERSION ORDER 2700132000
71	1285720000	ALL MODELS	LARGE WINGNUT FOR NEW VERSION ORDER 2700132000
72	1311031000	ALL MODELS	REAR AXEL SCREW
73	1074329000	ALL MODELS	BOLT - HANDLE TUBE / CURVED HEAD
74	1597743000	ALL MODELS	SCREW - CORD HOOK QUICK RELEASE
75	1601772000	ALL MODELS	LATCH SPACER
76	1606210000	N/A	HEADLIGHT SPRING CLIP
77	1670013000	ALL MODELS	MOTOR PLATE SCREW

1018 (Z)
1025
1028 (Z)
1030 (Z)
1038 (Z)
1058 (Z)
1059Z
089000
CR5128 (Z)
CR5130 (Z)
CR5158 (Z)



METAL UPRIGHTS

HARDWARE LISTING

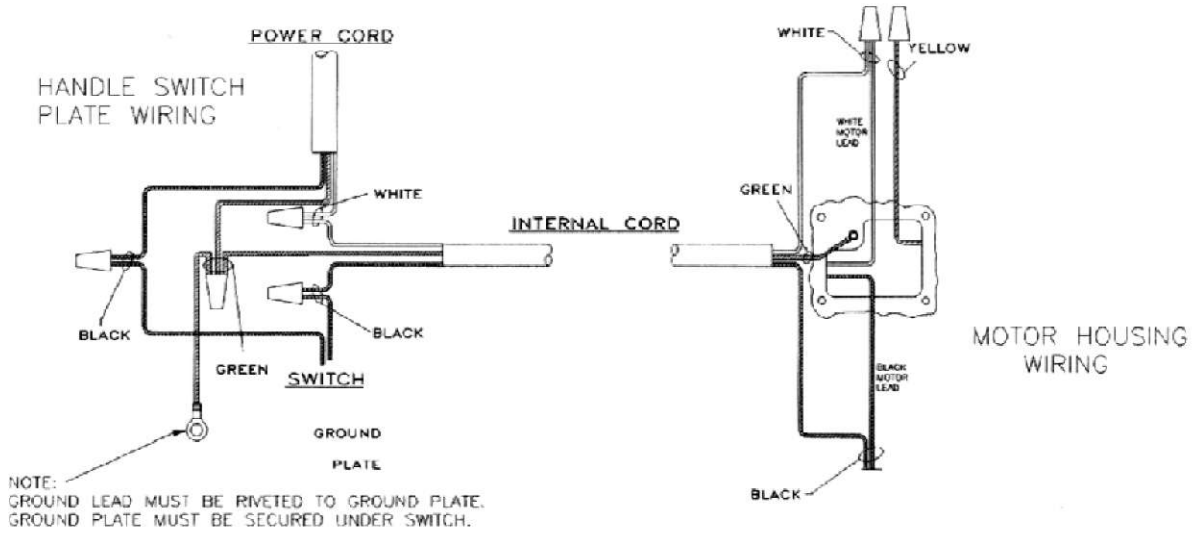
ITEM	PART NUMBER	MODELS TO FIT	PART DESCRIPTION
78	1670705000	1018, 1018Z, 1025, 1030, 1030Z, 1038, 1058, 1059Z, 089000, C5130, C5130Z, C5158	SPRING PIN - RELEASE PEDAL
79	1672009000	1018, 1018Z, 1025, 1030, 1030Z, 1038, 1058, 1059Z, 089000, C5130, C5130Z, c5158	SPRING - RELEASE PEDAL
80	1801701000	ALL MODELS	SCREW - SWITCH PLATE
81	1801708000	ALL MODELS	HANDLE FORK BOLT
82	1801715000	ALL MODELS	NUT W/NYLON INSERT
83	1801711000	ALL MODELS	WHEEL RETAINER CAP
84	1801713000	ALL MODELS	NUT - HANDLE FORK BOLT ORDER 1801715000
85	1802244000	N/A	SCREW
86	1870013000	1028, 1028Z, 1058Z, CR5128, CR5128Z, CR5158Z	SPRING - ADJUSTER BOLT
87	1880707000	ALL MODELS	SCREW #6-32 X 1/4" - MOTOR HOUSING
88	1884708000	ALL MODELS	EYE BOLT
	1884709000	ALL MODELS	EYE BOLT - LONGER
89	1980743000	ALL MODELS	THREAD FORMING SCREW - MOTOR HOUSING
90	1990104000	ALL MODELS	SCREW #10-24 X 5/8" - HANDLE STOP PLATE
91	1996011000	N/A	ADJUSTER ROD
92	1996101000	N/A	RETAINING PIN - ADJUSTER ROD
93	1996711000	N/A	E RING - ADJUSTER ROD
94	1133054000	N/A	SCREW
95	1130008B00	1018, 1018Z, 1025, 1030, 1030Z, 1038, 1058, 1059Z, 089000, C5130, C5130Z, c5158	COVER, FOOT ADJUSTMENT LEVER - GRAY
96	1700132000	ALL MODELS	HANDLE FORK SCREW - MALE ORDER 2700132000
97	1700133000	ALL MODELS	HANDLE FORK SCREW - FEMALE ORDER 2700132000
	2700132000	ALL MODELS	HANDLE FORK SCREW ASSEMBLY
98	1028000000	ALL MODELS	#10 FLAT LOCK WASHER

1018 (Z)
 1025
 1028 (Z)
 1030 (Z)
 1038 (Z)
 1058 (Z)
 1059Z
 089000
 CR5128 (Z)
 CR5130 (Z)
 CR5158 (Z)

METAL UPRIGHTS

WIRING SCHEMATIC

1028 (Z)
CR5128 (Z)



ACCESSORIES

PART NUMBER	MODELS TO FIT	PART DESCRIPTION
M305G		ATTACHMENT KIT - DELUXE
1258801800	ALL MTL UP'S	CREVICE TOOL - BURGUNDY
2024585B00	ALL MTL UP'S	HOSE CONNECTOR ADAPTOR ASSEMBLY
2041076B00	ALL MTL UP'S	LOWER WAND ASSEMBLY
2041077000	ALL MTL UP'S	UPPER WAND ASSEMBLY
2995084B00	ALL MTL UP'S	7' HOSE & BLEED VALVE ASSEMBLY
3097282B00	ALL MTL UP'S	ROUND DUSTING BRUSH - GREY
3415582B00	ALL MTL UP'S	6" UPHOLSTERY TOOL
3415682B00	ALL MTL UP'S	10" FLOOR BRUSH
M304		ATTACHMENT KIT
1402803600	ALL MTL UP'S	EXTENSION WAND
1502801600	ALL MTL UP'S	8" CREVICE TOOL
2024585B00	ALL MTL UP'S	HOSE CONNECTOR ADAPTOR ASSEMBLY
2051284600	ALL MTL UP'S	HOSE ASSEMBLY
3050282600	ALL MTL UP'S	ROUND DUSTING BRUSH
3097682600	ALL MTL UP'S	10" FLOOR BRUSH NOZZLE
3098584600	ALL MTL UP'S	UPHOLSTERY TOOL

1018 (Z)

1025

1028 (Z)

1030 (Z)

1038 (Z)

1058 (Z)

1059Z

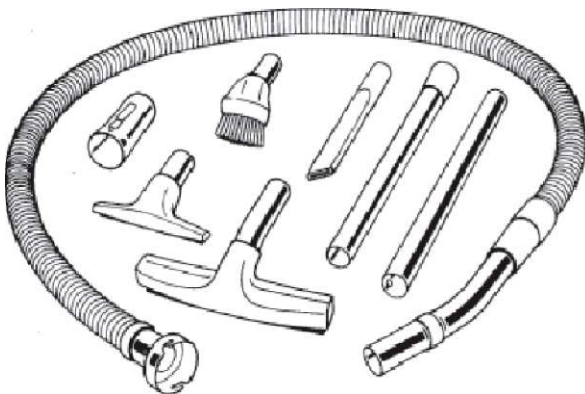
089000

CR5128 (Z)

CR5130 (Z)

CR5158 (Z)

M305G



M304

