

This Owner's Manual is provided and hosted by [Appliance Factory Parts](#).



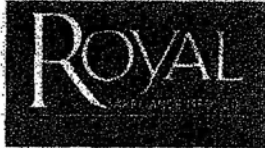
# Royal CS1200 Owner's Manual

[Shop genuine replacement parts for Royal CS1200](#)

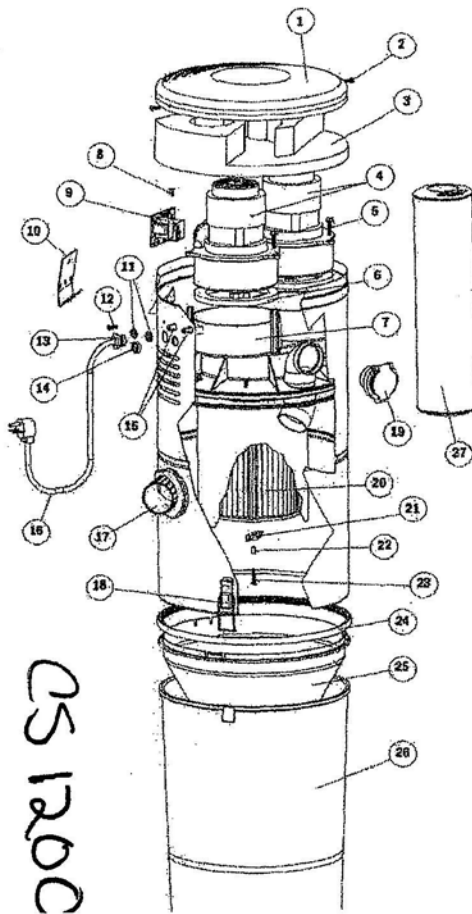


[Find Your Royal Vacuum Cleaner Parts - Select From 772 Models](#)

----- Manual continues below -----



## ROYAL REPLACEMENT PARTS LIST for Model CS1200 (Part #8215)



| Item # | Description (Qty.)          | Part #   |
|--------|-----------------------------|----------|
| 1      | Top Cover                   | 8174-06  |
| 2      | Screw, Top Cover (2)        | 7064-02  |
| 3      | Acoustic Foam Insert        | 8172     |
| 4      | Motor, 240V (2)             | 8152-01  |
| 5      | Screw, Motor Mounting (6)   | 28426-16 |
| 6      | Motor Gasket (2)            | 8133     |
| 7      | Motor Plate                 | 8103-02  |
| 8      | Screw, P.C.B. Mounting      | 8148     |
| 9      | Relay Assembly / P.C. Board | 8173-01  |
| 10     | Wall Bracket                | 7318     |
| 11     | Nylon Nut (2)               | 7692     |
| 12     | Screw, Grounding            | 7539-01  |
| 13     | Strain Relief Bushing       | 2478-04  |
| 14     | Low-Voltage Connector       | 7106-01  |
| 15     | Circuit Protector (2)       | 7107-02  |
| 16     | Power Cord                  | 7451-01  |
| 17     | Flexible Inlet Fitting      | 7092     |
| 18     | Wire Loop (2)               | 4835     |
| 19     | Inlet Valve Assembly        | 8123-01  |
| 20     | Filter -10"                 | 8107-01  |
| 21     | T-Latch                     | 7226     |
| 22     | Bushing, T-Latch            | 8124     |
| 23     | Screw, T-Latch Mounting     | 28426-16 |
| 24     | Gasket, Dirt Cone           | 8108-01  |