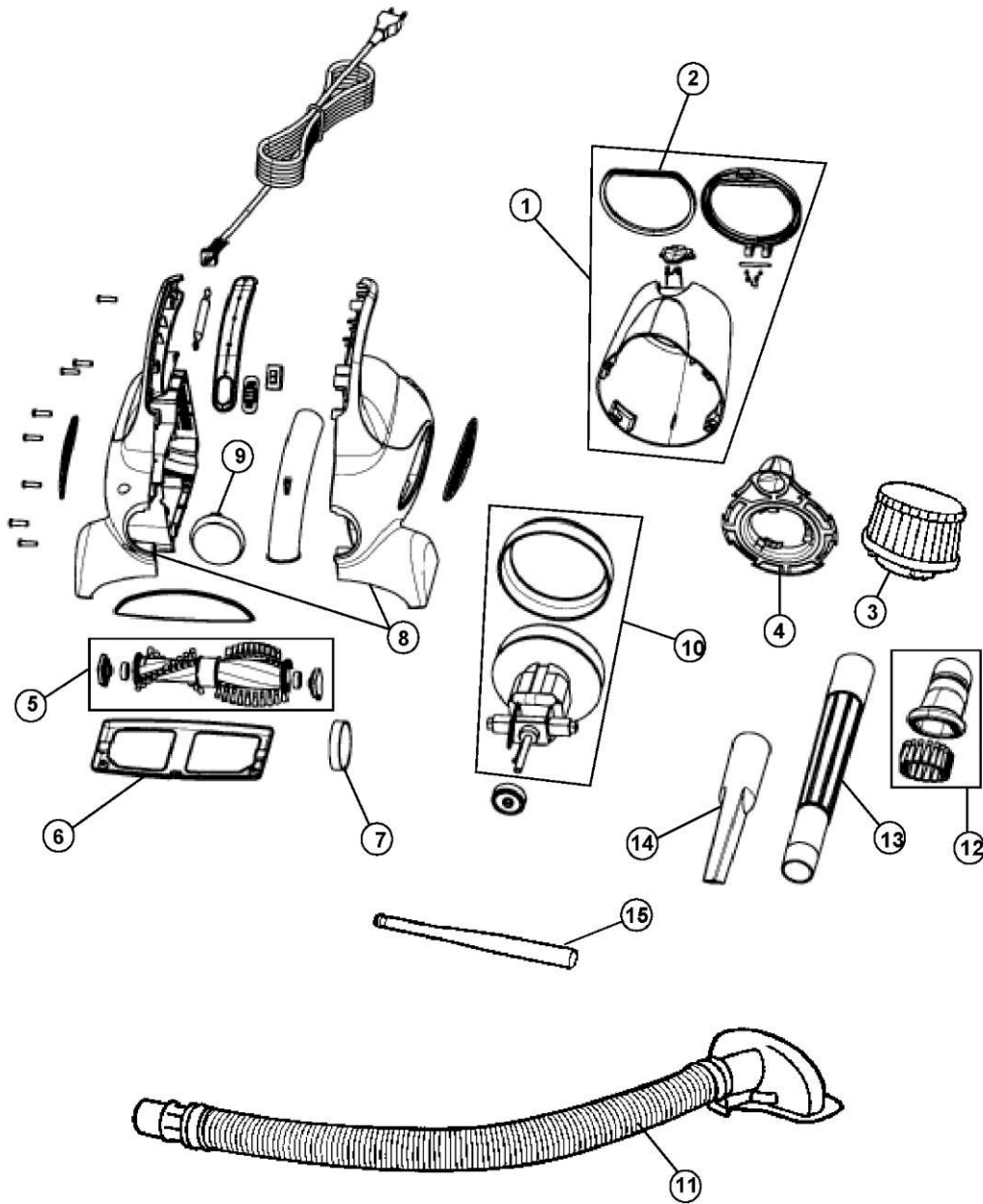


ASSEMBLY SCHEMATIC

ER10000





PRO SERIES
Corded Hand Vac

ER10000

| ITEM | PART NUMBER | MODELS TO FIT | PART DESCRIPTION |
|------|-------------|---------------|--|
| 1 | 2DJ0300000 | ER10000 | DIRT CUP ASSEMBLY - SMOKE |
| 2 | 1DJ0310600 | ER10000 | GASKET - DIRT CUP DOOR |
| 3 | 440002333 | ER10000 | F-9 / RINSABLE HEPA FILTER |
| 4 | 2DJ0380000 | ER10000 | FILTER ADAPTOR |
| 5 | 2DJ0130000 | ER10000 | BRUSH ROLL ASSEMBLY |
| 6 | 1DJ0180000 | ER10000 | NOZZLE GUARD |
| 7 | 1116214000 | ER10000 | STYLE 17 BELT |
| 8 | 440002534 | ER10000 | HOUSING ASSEMBLY - LEFT / RIGHT WITH VENT COVERS - METALLIC BLUE |
| 9 | 440002533 | ER10000 | NOZZLE CAP |
| 10 | 2DJ0110000 | ER10000 | MOTOR ASSEMBLY |
| 11 | 2DJ0400600 | ER10000 | HOSE ASSEMBLY |
| 12 | 440002334 | ER10000 | UPHOLSTRY TOOL BRUSH ASSEMBLY |
| 13 | 1DJ0600600 | ER10000 | EXTENSION WAND |
| 14 | 1DJ0425600 | ER10000 | CREVICE TOOL |
| 15 | 1880262000 | ER10000 | BELT LIFTER |