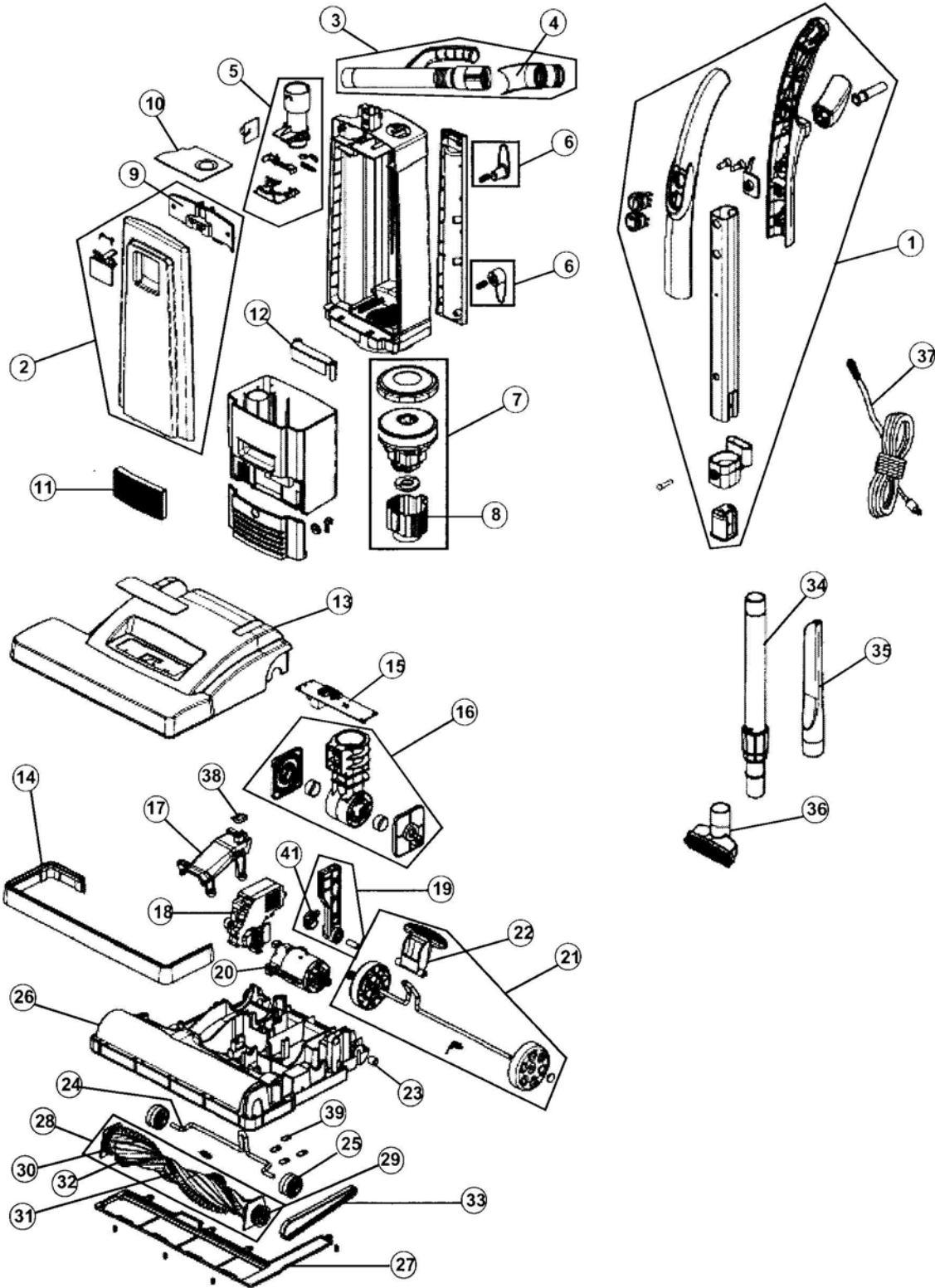


### ASSEMBLY SCHEMATIC

MODEL NO.  
RY6900





# COMMERCIAL UPRIGHT DUAL MOTOR

6

## PART LISTING

MODEL No.

RY6900

Item	Part Number	Model's To Fit	Part Description
1	2JS0500600	RY6900	HANDLE ASSEMBLY
2	2JS0900000	RY6900	FRONT PANEL ASSEMBLY
3	2JS0400600	RY6900	HOSE ASSEMBLY
4	1JS0405000	RY6900	UPPER HOSE CUFF
5	1JS0905000	RY6900	BAG MOUNT ADAPTOR
6	1JS0570000	RY6900	CORD HOOK
7	2JS0210000	RY6900	MOTOR ASSEMBLY
8	1JS0220000	RY6900	BLOWER MOTOR SHROUD
9	1JS0906000	RY6900	BACK PANEL SENSOR COVER
10	1JS0370000	RY6900	TYPE N BAG
	3JS0370001	RY6900	TYPE N BAG - 7 PACK
	3JS0371001	RY6900	TYPE N BAG - 10 PACK
11	2JS0360000	RY6900	F-14 FILTER / EXHAUST
12	2JS0510000	RY6900	CARRYING HANDLE - COVER
13	2JS0020600	RY6900	NOZZLE COVER ASSEMBLY - BLACK
14	1JS0030000	RY6900	BUMPER
15	2JS0100000	RY6900	P.C.B.
16	1JS0900000	RY6900	NOZZLE BASE AIR DUCT ASSEMBLY
17	1JS0901000	RY6900	CHANNEL COVER WITH SEAL
18	2JS0160000	RY6900	GEAR BOX
19	1JS0125000	RY6900	PIVOT BAR
20	2JS0004000	RY6900	BRUSH ROLL MOTOR
21	2JS0009000	RY6900	HANDLE RELEASE / REAR WHEEL ASSEMBLY
22	1JS0902000	RY6900	RELEASE PEDAL
23	1JS0903000	RY6900	PIVOT BAR BUSHING
24	1JS0126000	RY6900	WIRE FORM
25	2JS0130600	RY6900	FRONT ROLLER WHEEL - WIRE FORM
26	2JS0010600	RY6900	NOZZLE BASE
27	1JS0015000	RY6900	NOZZLE GUARD
28	2JS0050000	RY6900	BRUSH ROLL ASSEMBLY
29	2JS0060000	RY6900	BRUSH ROLL END CAP PULLY
30	1JS0075000	RY6900	END CAP
31	1JS0056000	RY6900	BRISTLE STRIP - LONG
32	1JS0052000	RY6900	BRISTLE STRIP - SHORT
	3JS0057001	RY6900	BRISTLE STRIPS PACKAGE 2 LONG / 2 SHORT



# COMMERCIAL UPRIGHT DUAL MOTOR

6

## PART LISTING / PRICE LIST

MODEL No.  
RY6900

Item	Part Number	Model's To Fit	Part Description
33	1JS0904000	RY6900	TIMING BELT
34	2JS0420600	RY6900	EXTENSION WAND
35	1JS0908000	RY6900	CREVICE TOOL
36	1JS0907000	RY6900	DUSTING BRUSH
37	1JS0600000	RY6900	EXTENSION CORD
38	1LJ0205000	RY6900	MICRO SWITCH
39	1LS0120000	RY6900	WIRE FORM CLAMP
40	2JS0090600	RY6900	REAR WHEEL ASSEMBLY
41	1JS0120000	RY6900	PIVOT BAR SUPPORT