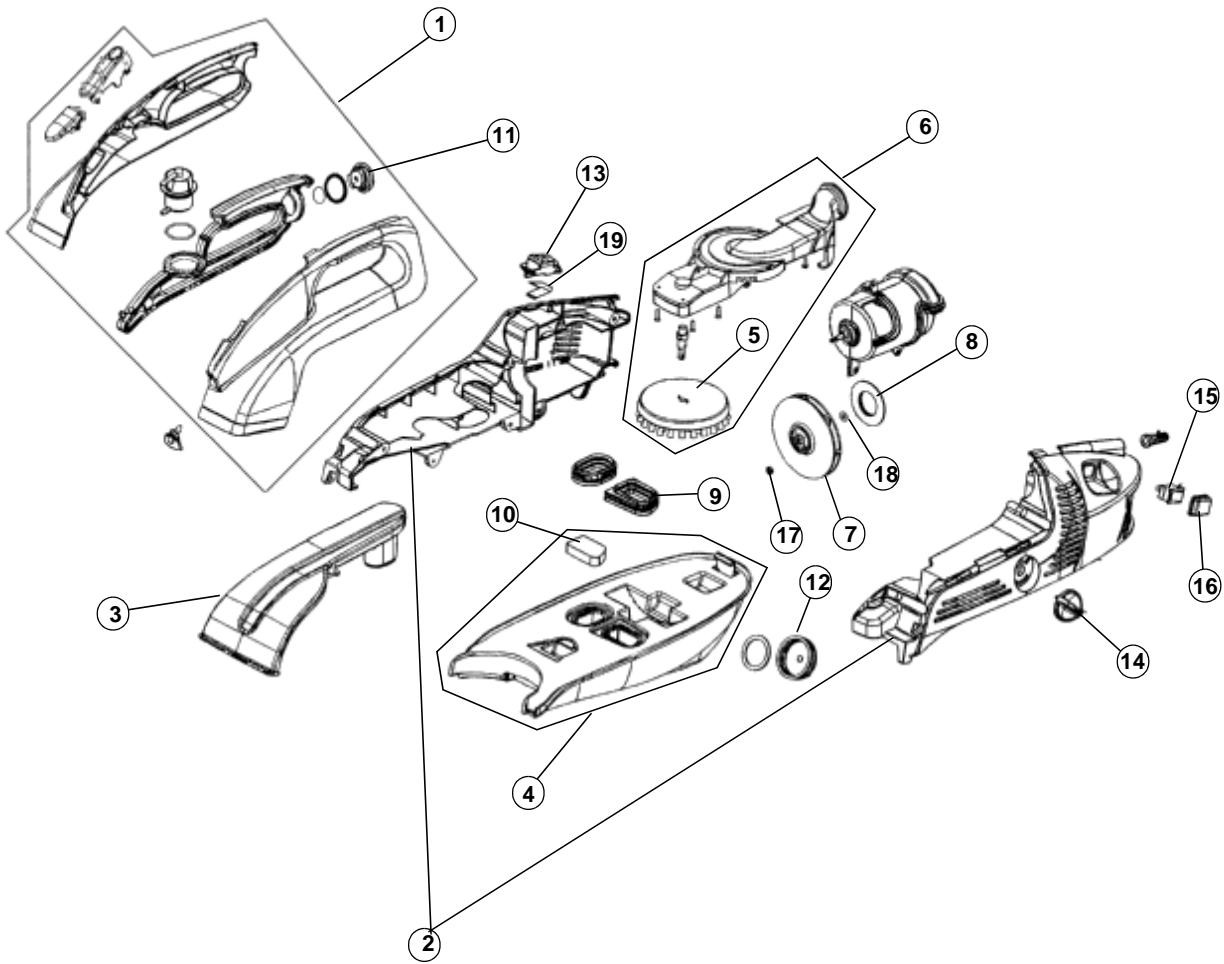


ASSEMBLY SCHEMATIC

MODEL NO.

SE2800(X)
SE2800HD
SE2850X



PART LISTING

| Item | Part Number | Model's To Fit | Part Description |
|------|-------------------------|--|----------------------------|
| 1 | 2280102000 | SE2800, SE2800HD | CLEAN WATER TANK w/CAP |
| | 2280101000 | SE2850X | CLEAN WATER TANK w/CAP |
| 2 | 9281045W00 | SE2800, SE2800HD | HOUSING ASSEMBLY w/MOTOR |
| | | SE2850X | HOUSING ASSEMBLY w/MOTOR |
| 3 | 2280507000 | ALL | INLET TUBE ASSEMBLY |
| 4 | 9280302000 SEE NOTES | SE2800 | DIRTY WATER TANK ASSEMBLY |
| | 2280303000 | SE2800 - SERIES B SE2800HD, SE2850X | DIRTY WATER TANK ASSEMBLY |
| 5 | 2280700000 | ALL | BRUSH ASSEMBLY |
| 6 | 2280603000 | ALL | TURBINE HOUSING/BRUSH ASSY |
| 7 | 2280024600 | ALL | IMPELLER ASSEMBLY |
| 8 | 1280037000 | ALL | MOTOR HOUSING GASKET |
| 9 | 1280315000 | ALL | DWT/TURBINE GASKET |
| 10 | 1280075600 | ALL | FOAM FILTER |
| 11 | 2280130000 | ALL | CWT CAP ASSEMBLY |
| 12 | 2280330000 | SE2800 | DRAIN CAP ASSEMBLY |
| | 1380340AT0 | SE2800 - SERIES B SE2800HD, SE2850X | DRAIN CAP ASSEMBLY |
| 13 | 1280125B00 | ALL | CWT LATCH |
| 14 | 1280085Y00 | ALL | TURBINE VALVE KNOB |
| 15 | 1280150100 | ALL | SWITCH |
| 16 | 1280155000 | ALL | SWITCH SEAL |
| 17 | 1280270000 | ALL | IMPELLER/MOTOR NUT |
| 18 | 1280260000 | ALL | IMPELLER/MOTOR WASHER |
| 19 | 1280127000 | ALL | CLEAN WATER TANK SPRING |

MODEL No.

SE2800(X)
SE2800HD
SE2850X

** THE NEW DIRTY WATER TANK 2280303000 SERIES "B" IS INTERCHANGEABLE WITH THE SERIES A UNIT. HOWEVER, WE DO NOT RECOMMEND USING A SERIES "A" DIRTY WATER TANK 9280302000 ON THE SERIES "B" UNITS THAT DO NOT HAVE THE ALCI PROTECTOR.