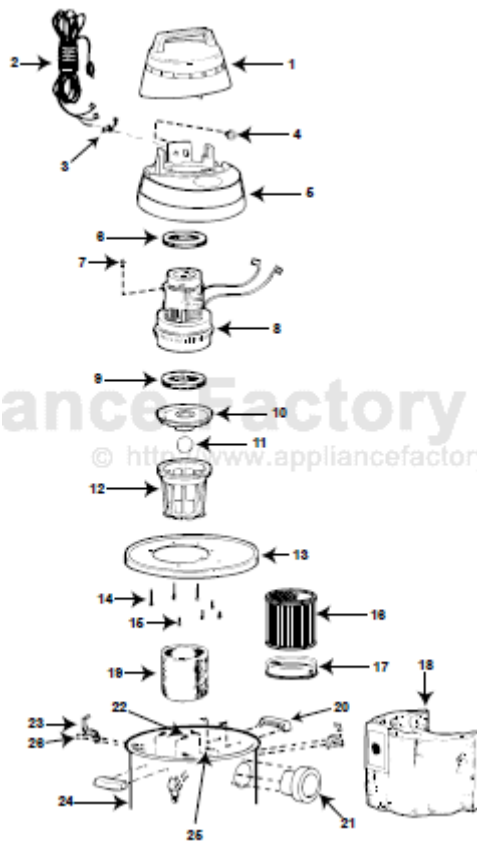


This Owner's Manual is provided and hosted by Appliance Factory Parts.



Shop Vac 464D Owner's Manual

[Shop genuine replacement parts for Shop Vac 464D](#)

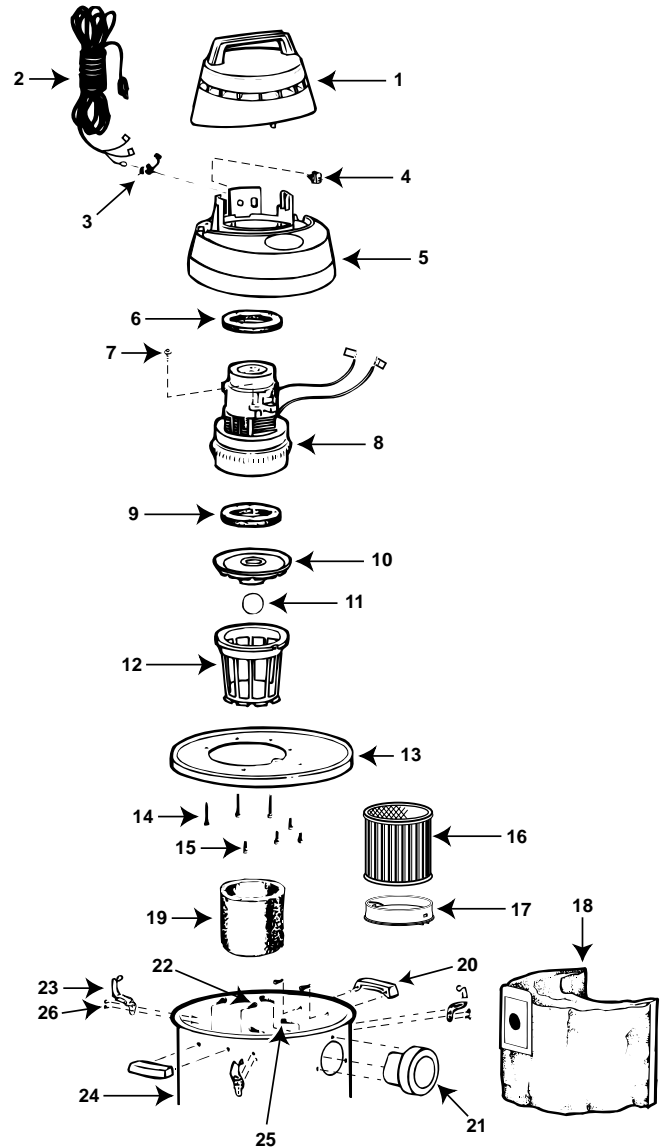


[Find Your Shop Vac Vacuum Cleaner Parts - Select From 487 Models](#)

----- Manual continues below -----

Model 464D

Catalog 464-46-10 (10 Gal.)
 464-47-10 (10 Gal. S/S)
 464-48-10 (20 Gal.)
 464-49-10 (20 Gal. S/S)



ITEM	DESCRIPTION	PART NO.
1	Motor cover	54930-96-1
2	Power cord	04234-96-9
3	Strain relief	34004-99-4
4	Switch	82319-00-5
5	Motor housing	54630-04-1
6	Upper motor gasket	20700-00-1
7	Ground screw	17008-99-6
8	Motor	13491-97-2
9	Lower motor gasket	20716-00-7
10	Grid plate	88607-00-7
11	Ball float	00811-00-0
12	Filter cage	87901-00-5
13	Lid (10 gal.) (20 gal.)	89875-11-6 89877-11-2
14	Screw hex head, #10 x 3", type AB	15058-99-3
15	Screw hex head, #10 x 1", type AB	15096-99-3
16	Cartridge filter	90304-62-7
17	Filter Retainer	30080-00-6
18	High efficiency collection bag (10 gal.) (20 gal.)	91906-10-7 91907-10-5
19	Foam sleeve	90585-62-1
20	Handle package	93551-96-8
21	Inlet	21720-01-6
22	Screw hex head, #10 x 3/4", Type AB	15039-99-3
23	Buckle	01403-00-5
24	Tank assembly (10 gal.) (10 gal. SS) (20 gal.) (20 gal. SS)	10411-97-3 10412-97-1 10413-97-9 10414-97-7
25	Screw hex head, #10 x 5/8", type AB	15054-99-2
26	Rivet	03002-99-5

Standard Accessories:

- 12' (3.66 m) x 1 1/2" (3.81 cm) Hose
- (2) 1 1/2" (3.81 cm) Metal extension wands
- 14" (35.56 cm) Deluxe master nozzle
- 14" (35.56 cm) Double-blade squeegee insert
- 14" (35.56 cm) Floor brush insert
- 14" (35.56 cm) Carpet insert

Limited One-Year Warranty

Shop-Vac Corporation warrants all Industrial, Commercial, and Contractor vacuum cleaners for one year from date of purchase to correct by repair or parts replacement without charge any product defect due to faulty material or workmanship, provided that the vacuum cleaner is not used for rental service.