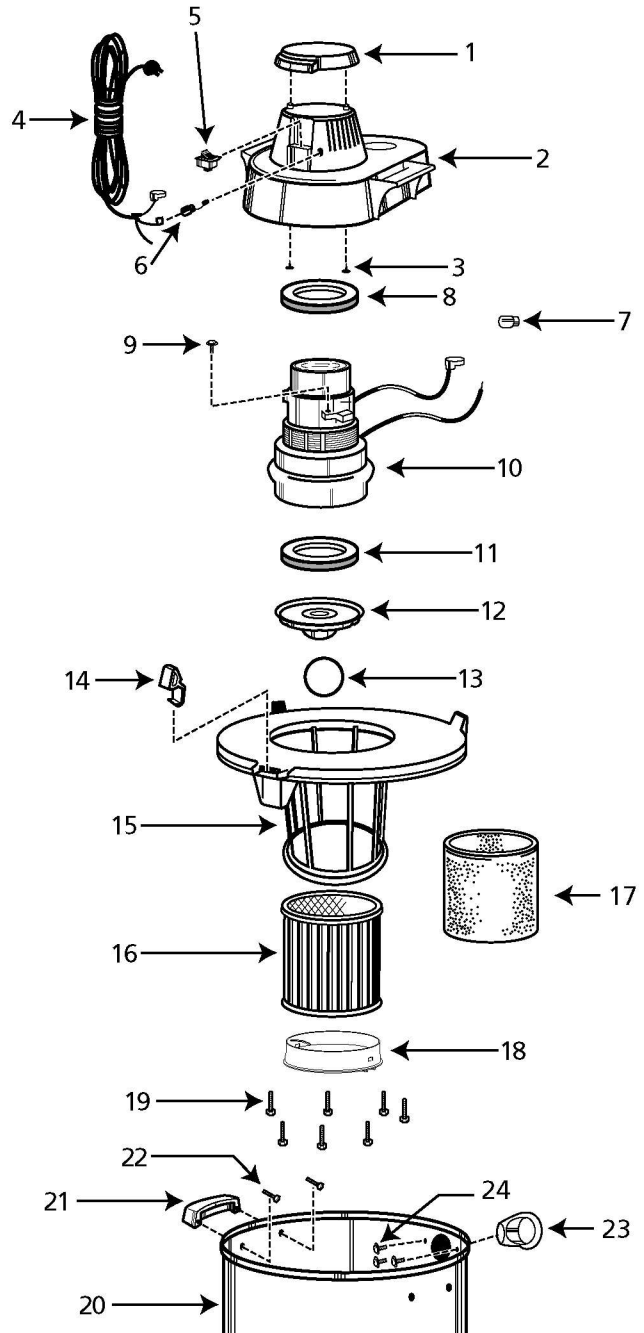


Model 610A

Catalog 610-50-10 (10 Gal. s/s)
610-50-00 (10 Gal. s/s)



ITEM	DESCRIPTION	PART NO.
1	Cover	85550-01-0
2	Motor housing	88540-00-0
3	Screw #8 x 5/8" Ph pan hd., type AB	15063-99-3
4	Power cord (12') (18')	04292-96-7 04293-96-5
5	Switch	82303-04-1
6	Strain relief bushing	34004-99-4
7	Wire nut	05001-99-5
8	Upper motor gasket	20700-00-1
9	Ground screw	17008-99-6
10	Motor	17300-97-1
11	Lower motor gasket	20716-00-7
12	Grid plate	88607-00-7
13	Ball float	00811-00-0
14	Lid latch	85501-01-3
15	Lid cage & latch assembly	89887-14-5
16	Cartridge filter	90304-62-7
17	Foam sleeve	90585-62-1
18	Filter retainer	30080-00-6
19	Screw #10 x 1" hex head, type AB (S.S.) (painted)	15096-99-3 10466-97-7 51045-96-1
20	Tank assembly (includes inlet)	93551-96-8
21	Handle package (includes 2 handles and 4 mounting screws)	15039-99-3
22	#10 x 3/4" screw hex head	21720-01-6
23	Inlet fitting	15054-99-2
24	#10 x 5/8" screw hex head	

Standard Accessories:

- 12' (3.66 m) x 1 1/2" (3.81 cm) Hose
- (2) 1 1/2" (3.81 cm) Metal extension wands
- 14" (35.56 cm) Metal nozzle
- 14" (35.56 cm) Squeegee insert
- 14" (35.56 cm) Brush insert

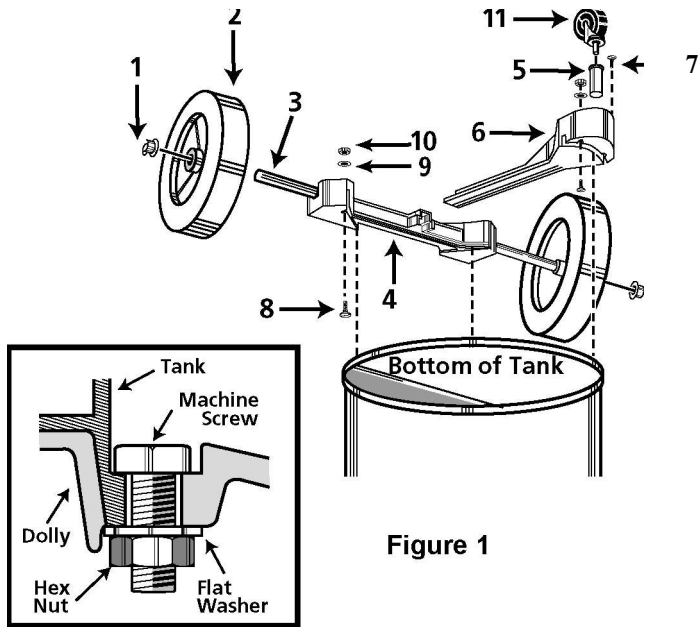


Figure 1

ITEM	DESCRIPTION	PART NO.
1	Cap nut	43002-99-7
2	8" Wheel	24250-10-2
3	Axle	24408-00-7
4	Rear frame	93921-96-3
5	Caster socket	75405-00-1
6	Front frame	93920-00-7
7	#8 x 1/2" lg. Screw	15015-99-3
8	1/4 - 20 x 3/4" lg. machine screw	09029-99-2
9	1/4" Flatwasher	07003-99-9
10	1/4 - 20 Hex nut	13001-99-5
11	Caster	67736-00-9

Dolly Assembly

1. Remove head from tank and place tank upside down on a flat surface.
2. Place wheels on rear frame/axle assembly with extended hub towards dolly frame and place cap nut on axle. Secure with hammer.
3. Insert caster socket into front frame and secure with phillips head screw.
4. Place groove in front frame into lip of tank and position so frame is directly above inlet.
5. Position grooves of rear frame on lip of tank and align so rear and front frames engage.

6. Secure dolly frame to tank by placing machine screws up through holes in dolly frame. Ensure head of screw is fully recessed in area provided. After machine screw is inserted, tighten with flatwasher and hex nut.
7. Insert caster in caster socket and apply downward pressure until caster snaps into place.
8. Stand vacuum up on dolly. Place metal carriage handle between tank and side handles, and fasten tightly with screws provided. Be sure to spread ends of carriage handle when assembling to prevent damage to tank.

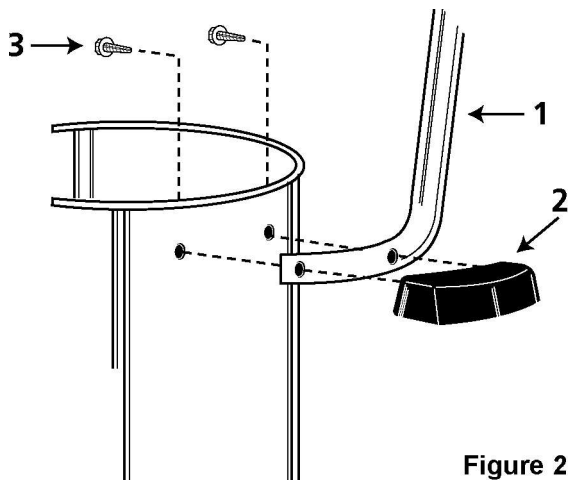


Figure 2

ITEM	DESCRIPTION	PART NO.
1	Metal tank handle	20811-01-4
2	Side tank handle	93551-00-0
3	#10 x 3/4" Screw hex head	15039-99-3