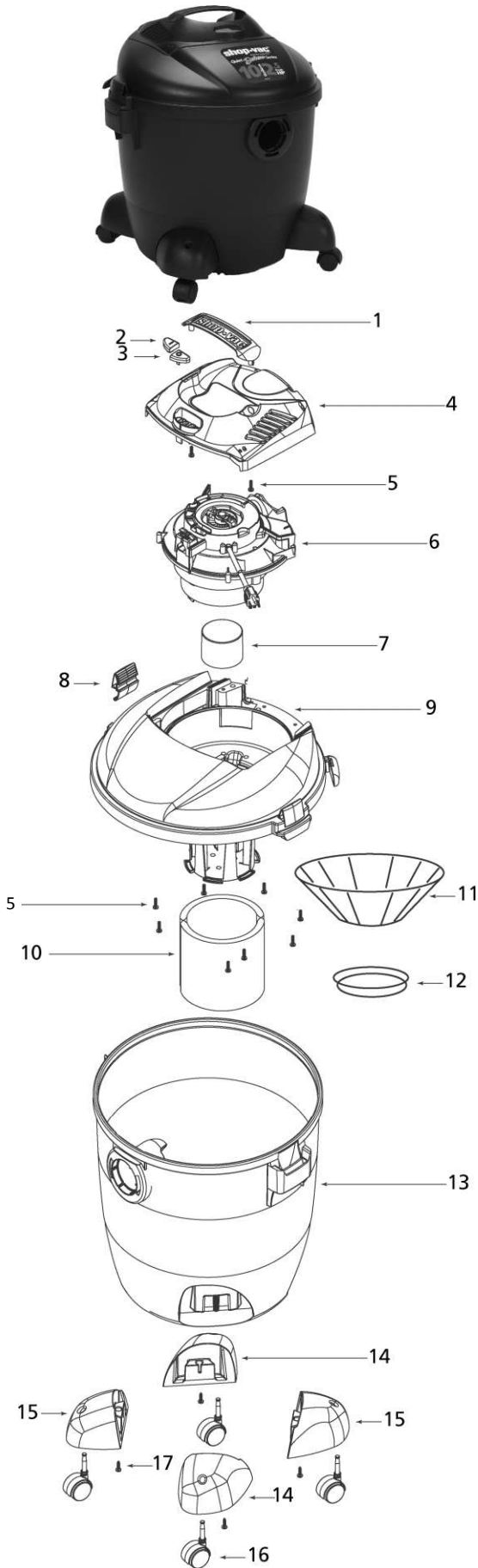


86 Series

Model 86L250B



ITEM	DESCRIPTION	PART NO.
1	Handle	3751000
2	Switch Button - I	7414200
3	Switch Button - O	7414210
4	Motor Cover Assembly	3743000
5	Screw 10 x 3/4" Trilobe Twin Lead	1517699
6	Power Unit Assembly	8136297
7	Float	3545000
8	Lid latch	7444500
9	Lid Cage and Latch Assembly	1944642
10	Foam Sleeve	9058500
11	Reusable Dry Filter	9010700
12	Mounting Ring	3006500
13	Tank Assembly	1025797
14	Caster Foot A	8568000
15	Caster Foot B	8568010
16	Caster	6774200
17	Screw 10 x 3/4" SL Hex Head	1503999

* Replacement parts may differ from original equipment.