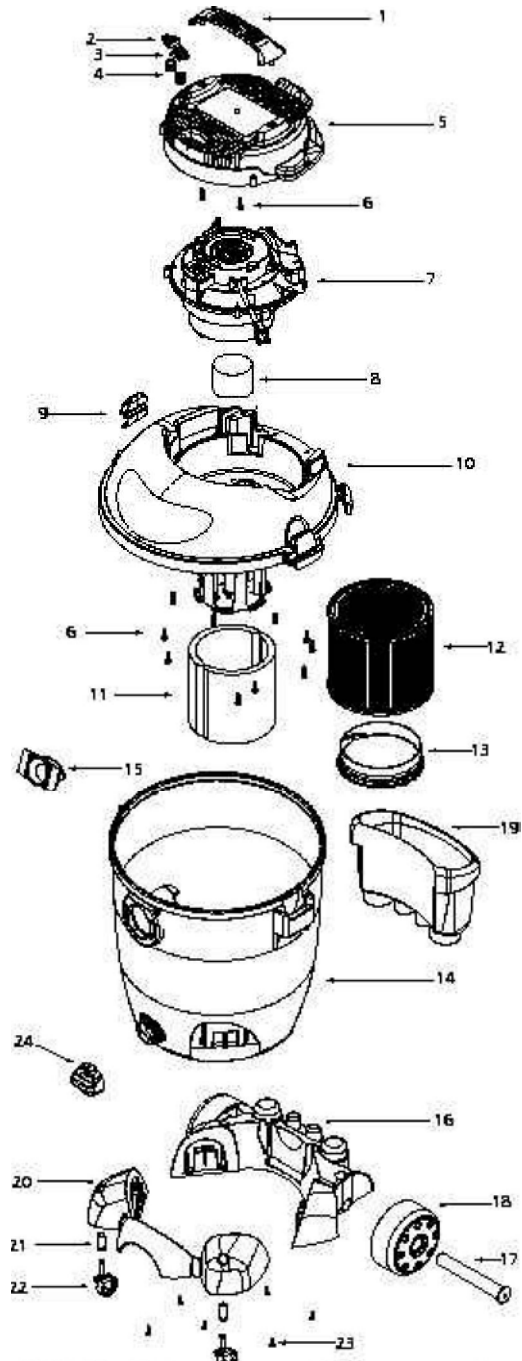


shop-vac

Model 90L500

Catalog 9301211 LOWES

(12 Gal.)



ITEM	DESCRIPTION
1	Handle
2	Switch Button - Red
3	Switch Button - Green
4	Spring
5	Motor Cover Assembly
6	Screw 10 x 3/4" Trilobe T25 Head
7	Power Unit Assembly
8	Float
9	Lid Latch
10	Lid Cage and Latch Assembly
11	Foam Sleeve
12	Cartridge Filter (Includes item 13)
13	Filter Retainer
14	Tank Assembly
15	Inlet Deflector
16	Rear Wheel Dolly/Tool Holder
17	Axle
18	Rear Wheel
19	Accessory Basket
20	Front Caster Dolly
21	Retainer
22	Caster
23	Screw 10 x 3/4" SL Hex Head
24	Drain Cover

STANDARD ACCESSORIES

- 8' x 2-1/2" hose
- 2 - 2-1/2" extension wands
- 14" floor nozzle w/brush
- 14" squeegee insert
- 2-1/2" crevice tool
- 8" utility nozzle
- hose holder

FIVE-YEAR HOME USE WARRANTY - SATISFACTION GUARANTEED

Your Shop-Vac® vacuum cleaner is warranted in normal household use, in accordance with the User Manual, against original defects in material and workmanship for a period of five years from date of purchase. Should this product be used for commercial or rental use, a 90 day limited warranty will apply. Shop-Vac Corporation warrants placing this vacuum cleaner in correct operating condition, by repair or parts replacement, during the warranty period, without charge. This warranty does not cover accessories. Use of non-recommended filters and/or accessories may void the manufacturer's warranty.