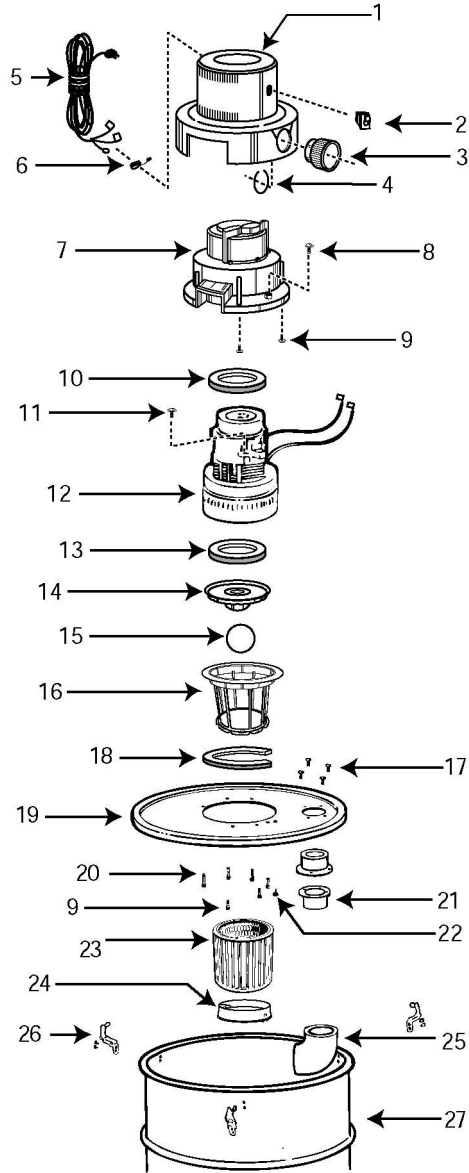


Model 970C

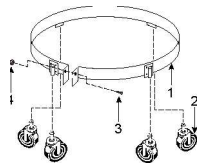
Catalog 970-05-10 (55 Gal.)
970-06-10 (55 Gal. Head only)



ITEM	DESCRIPTION	PART NO.
1	Motor cover	72002-00-9
2	Switch	82319-00-5
3	Exhaust fitting	84600-00-6
4	Retaining ring	36002-99-6
5	Power cord	04231-96-5
6	Strain relief bushing	34004-99-4
7	Motor housing	72111-00-8
8	#10 - 24 x 5/8" Screw	09006-99-0
9	#10 x 1" Screw	15084-99-9
10	Upper motor gasket	20700-00-1
11	10-24 x 1/2", Ground screw	17008-99-6
12	Motor	19400-46-4
13	Lower motor gasket	20716-00-7
14	Grid plate	88607-00-7
15	Ball float	00811-00-0
16	Filter cage	87901-00-5
17	#10 x 5/8" Screw	15054-99-2
18	Strip gasket	20711-01-6
19	Cover	31154-00-8
20	#10 x 3" Screw	15058-99-3
21	Flange ferrule	23401-00-3
22	#10 - 24 Hex nut	13009-99-8
23	Cartridge filter	90304-62-7
24	Filter retainer	30080-00-6
25	Elbow	09104-00-1
26	Clamp (pkg. of 3 w/ hardware)	45800-96-8
27	Tank assembly	31204-97-8

Band Dolly Assembly

1. Place casters into sockets on band assembly.
2. Place tank upside down and slip band assembly over lip on bottom of tank.
3. Insert bolt and tighten nut until secure.



ITEM	DESCRIPTION	PART NO.
1	55 Gal. band assembly	00633-96-6
2	Caster	67714-00-6
3	Hex head bolt, 1/4 - 20 x 1 3/4"	08073-99-1
4	Hex nut, 1/4 - 20	13001-99-5

Standard Accessories:

- 12' (3.66 m) x 1 1/2" (3.81cm) Hose
- 6" (15.24cm) Metal gulper nozzle