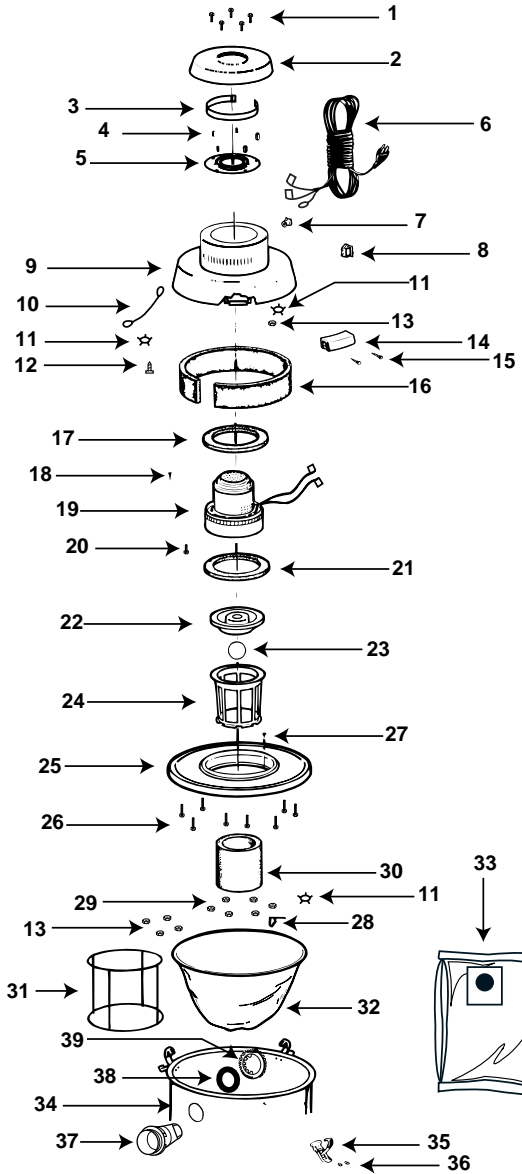


Model 991B

Catalog 9911510
(15 Gal. S/S)



ITEM	DESCRIPTION	PART NO.
1	#10-24 x 3/8" lg. Pan head screw	3902099
2	Umbrella	9930000
3	Baffle ring	9934700
4	Hex spacer	9933100
5	Motor housing top plate	9930605
6	Power cord	0424796
7	Strain relief bushing	3400499
8	Switch	8231900
9	Main motor housing	9943996
10	Ground Lead	4222896
11	#10 Starwasher	2300499
12	#10 x 1 1/2 Type AB Hex HD screw	1506199
13	# 10-24 Hex nut	1300999
14	Handle	9935900
15	Handle bolt	6400699
16	Plenum foam gasket	9933400
17	Foam gasket	5630000
18	Ground Screw	1700899
19	Motor	1349697
20	Screw #8-10 x 5/8" Ph.	1591700
21	Motor gasket	2072100
22	Grid plate	8940010
23	Ball float	0081100
24	Filter cage	8790100
25	Lid	8987901
26	#8 x 3/4" lg. Type AB hex head screw	1507599
27	#10-24 x 3/8" lg. Hex head machine screw	0900399
28	Filter frame clip	9938400
29	#10-24 washer base Hex nut	1302299
30	Foam sleeve	9058562
31	Full filter frame	3003700
32	Full polyester filter	9063900
33	High quality collection filter bag	9190710
34	Tank assembly	1046397
35	Buckle	9934600
36	Rivet	3101099
37	Inlet fitting	6451010
38	Inlet gasket	0705100
39	Inlet lock ring	6451100

Standard Accessories:

- 10' (3.05 m) x 1 1/2" (3.81 cm) Hose
- (2) 1 1/2" (3.81 cm) Metal extension wands
- 14" (35.56 cm) Metal master nozzle
- 14" (35.56 cm) Squeegee shoe
- 14" (35.56 cm) Rug shoe
- 1 1/2" (3.81 cm) Crevice tool
- 1 1/2" (3.81 cm) Round brush
- 6" (15.24 cm) Utility nozzle

Limited One-Year Warranty

Shop-Vac Corporation warrants all Industrial, Commercial, and Contractor vacuum cleaners for one year from date of purchase to correct by repair or parts replacement without charge any product defect due to faulty material or workmanship, provided that the vacuum cleaner is not used for rental service.