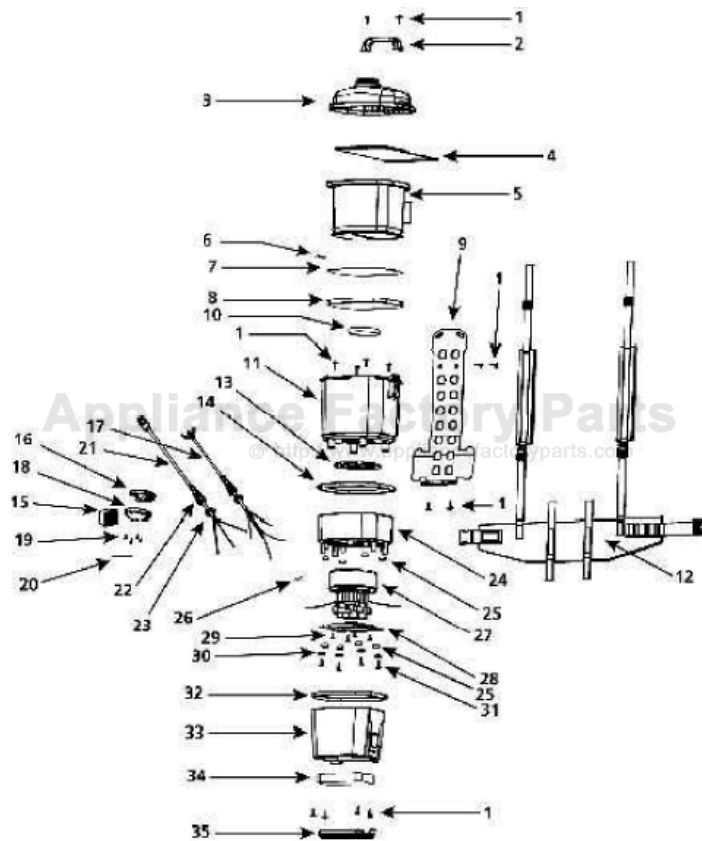


This Owner's Manual is provided and hosted by [Appliance Factory Parts](http://Appliance Factory Parts).



# Shop Vac BP20TS Owner's Manual

[Shop genuine replacement parts for Shop Vac BP20TS](#)



[Find Your Shop Vac Vacuum Cleaner Parts - Select From 487 Models](#)

----- Manual continues below -----

# Model BP20TS



Catalog 2850010



| ITEM | DESCRIPTION                      | PART NO.           |
|------|----------------------------------|--------------------|
| 1    | V/ x Scraw                       | 1514699            |
| 2    | Handle                           | 2410000            |
| 3    | Top cover assernp^               | 2372900            |
| 4    | Fa per filter bag                | 9191710            |
| 5    | Gbth filter bag<br>slcwa         | 9191310<br>2373500 |
| 7    | Reinforcing wire                 | 2373600            |
|      | Foam spacer                      | 2373100            |
| 9    | Sack plate                       | 2370700            |
| -10  | Foam filter- miJdleiank          | 2371400            |
| 11   | Tank assembly                    | 23723S1            |
| 12   | Harness                          | 2371900            |
| 13   | Gasket • motor                   | 2070000            |
| 14   | Tank gasket - top                | 2371101            |
| 15   | Switch                           | 3231900            |
| 16   | Switch housing - top             | 2372100            |
| 17   | Cord assarnbty - on.toff         | 0423996            |
| 13   | Switch housing • bottom          | 2372200            |
| 19   | ckV:' 3crow, Ph pan hid, typo ET | 15C3599            |
| 20   | Vefcio hook                      | 2373400            |
| 21   | Cordassamb^ - power              | 0423396            |
| 22   | Flex connector                   | 2371300            |
| 23   | Nut- nylon                       | 2371301            |
| 24   | Motor housing                    | 2370300            |
| 25   | Rubber insu&tor                  | 2371200            |
| 26   | Wire nut                         | 0500199            |
| 27   | Motor                            | 1496497            |
| 23   | Motor mount                      | 2370400            |
| 29   | Screw iC * <=i' hex head         | 15CM99             |
| 30   | Rubber fietainer                 | 2370300            |
| 31   | Screw - motor mount              | 1591725            |
| 32   | Tank gasket • bottom             | 2371102            |
| 33   | Bottom cover                     | 2370500            |
| 34   | Fcam filter- bottom cover        | 2371300            |
| 35   | Filter oaver                     | 2370600            |

### Standard Accessories:

- 5' x 1 1/2" Hose
- (2) 1 1/2" Metal extension wands
- Dual surface selector nozzle
- 1 1/2" Crevice tool
- 1 1/2" Round brush
- 6" Utility nozzle
- 1 1/2" Accessory adapter
- 50' Extension cord

