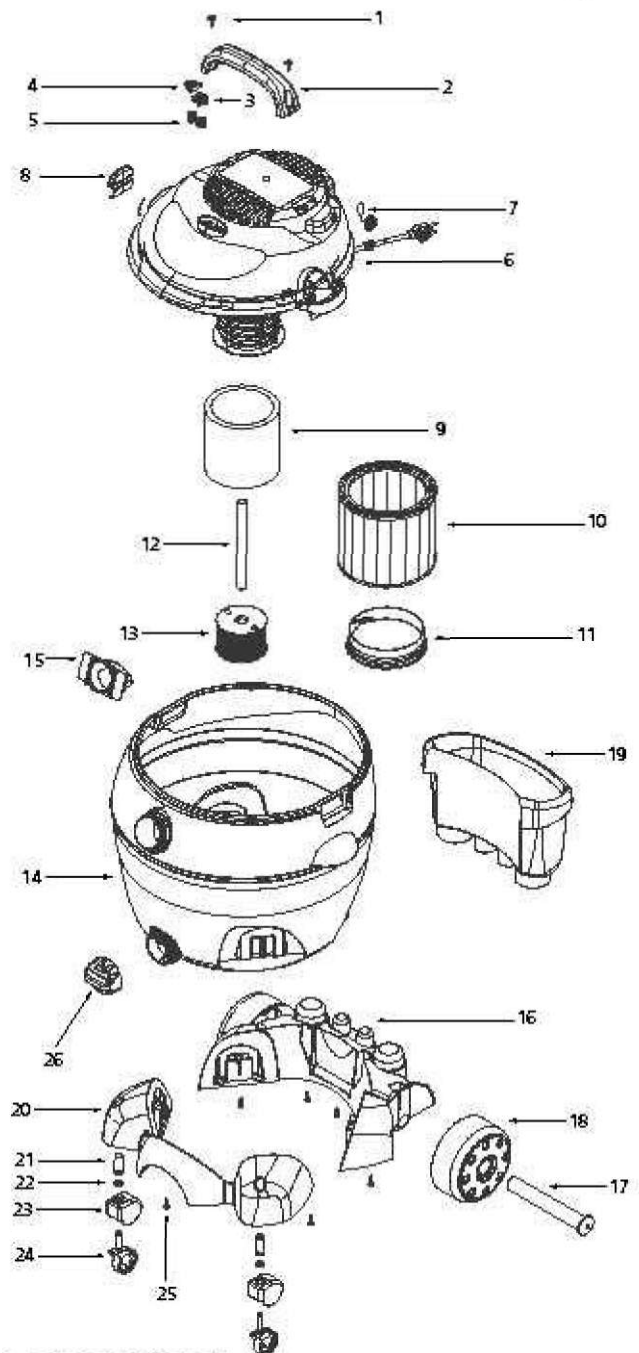


shop-vac®

Model - LPV650

Catalog 9301711 LOWES
(16 Gal.)



ITEM	DESCRIPTION	PART NO.
1	1/4 x 3/4 Triloba T25 HD	1516499
2	Handle	7441401
3	Switch Button - Red	7441510
4	Switch Button - Green	7441500
5	Spring	2302899
&	Power Unit Assembly	7230397
7	Outlet Fitting Cap	7443310
8	Lid Latch	744-1601
9	Foam Sleeve	9058562
10	Cartridge Filter (includes item 11)	9030462
11	Filter Retainer	3008000
12	Pickup Tuba	2723103
13	Pickup Cage Assembly	7412250
14	Tank Assembly	1022797
15	Inlet Deflector	7413100
16	Rear Wheel Dolly/Tool Holder	7440211
17	Axle	7410901
18	Rear Wheel	7440401
19	Accessory Basket	9064300
20	Front Caster Dolly	7430251
21	Retainer	5565700
22	Flat Washer	0704399
23	Caster Cover	7443000
24	Caster	6773900
25	Screw 10x3/4 SL HX HD	1503999
26	Drain Cover	7443420

STANDARD ACCESSORIES

- 8' x 2-1/2" hose
- 2 - 2-1/2" extension wands
- 14" floor nozzle w/ brush
- 14" squeegee insert
- 2-1/2" crevice tool
- 8" utility nozzle
- hose holder
- elbow grip

FOUR-YEAR HOME USE WARRANTY

Your Shop-Vac® vacuum cleaner is warranted in normal household use, in accordance with the User Manual, against original defects in material and workmanship for a period of four years from date of purchase. Should this product be used for commercial or rental use, a 90 day limited warranty will apply. Shop-Vac Corporation warrants placing this vacuum cleaner in correct operating condition, by repair or parts replacement, during the warranty period, without charge. This warranty does not cover accessories. Use of non-recommended filters and/or accessories may void the manufacturer's warranty.