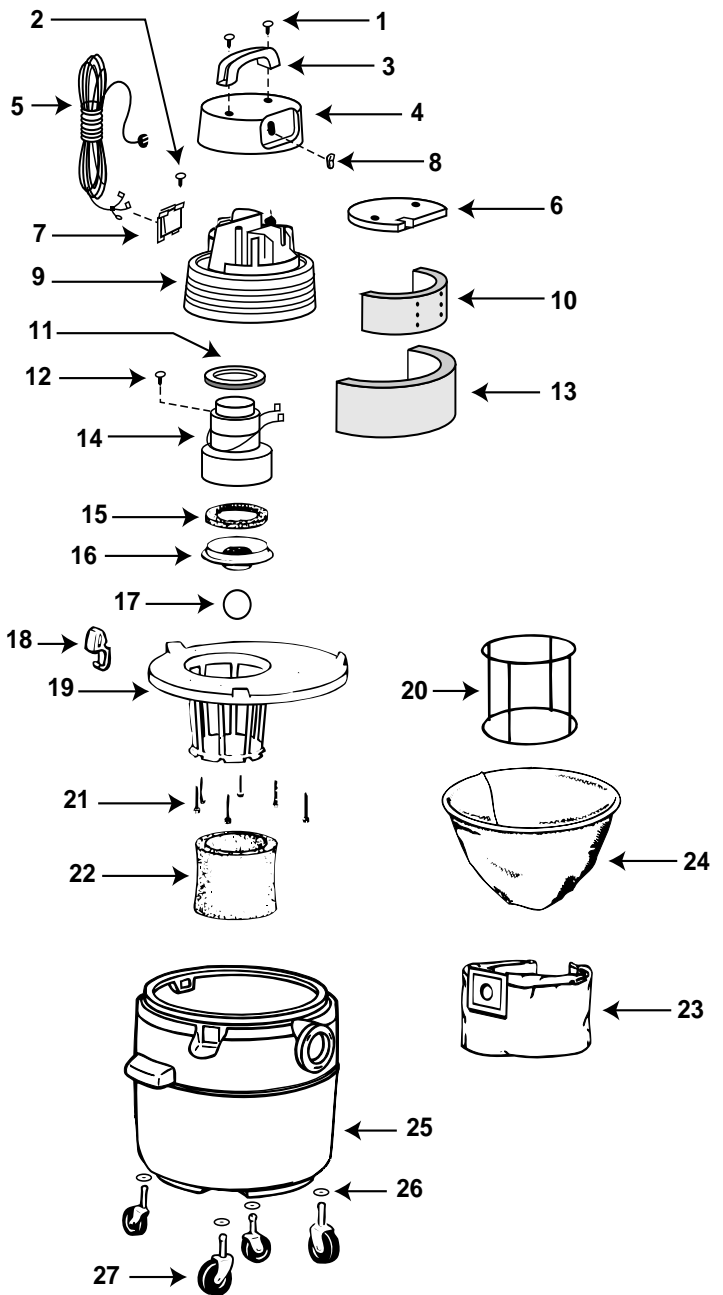


# Model QL20ATS

Catalog 925-50-10  
(6 Gal.)



ITEM	DESCRIPTION	PART NO.
1	Screw truss head 1/4" x 3/4", type AB	15146-99-6
2	Screw #8 x 1/2 Ph pan hd, type AB	15007-99-0
3	Top handle	24105-00-9
4	Motor housing cover	24106-07-2
5	Power cord	25800-27-7
6	Foam insert cover	24125-00-7
7	Cord retainer	24111-07-2
8	Switch	82319-00-5
9	Motor housing	24107-14-6
10	Inner housing, acoustical foam	12904-00-9
11	Upper motor gasket	20700-00-1
12	#10 - 24 x 1/2" lg. Ground screw	17008-99-6
13	Outer housing, acoustical foam	12905-03-0
14	Motor	19400-45-6
15	Lower motor gasket	20716-00-7
16	Grid plate	88607-00-7
17	Ball float	00811-00-0
18	Latch	85501-01-3
19	Lid cage assembly	89670-21-0
20	Full filter frame	30037-00-6
21	#10 x 3/4" Screw	15039-99-3
22	Foam sleeve	90585-62-1
23	High quality collection filter bag	91904-10-2
24	Full polyester filter	90637-00-0
25	Tank assembly (6 gal.)	10459-97-2
26	Flatwasher	07043-99-5
27	Caster	67738-00-5

### Standard Accessories:

- 10' (3.05 m) x 1 1/4" (3.18 cm) Hose
- (2) Metal extension wands
- 10" (25.4 cm) Combination nozzle w/ squeegee insert
- 1 1/4" (3.18 cm) Crevice tool
- 1 1/4" (3.18 cm) Round brush
- 1 1/4" (3.18 cm) Gulper nozzle
- Dual surface selector nozzle

### Limited One-Year Warranty

Shop-Vac Corporation warrants all Industrial, Commercial, and Contractor vacuum cleaners for one year from date of purchase to correct by repair or parts replacement without charge any product defect due to faulty material or workmanship, provided that the vacuum cleaner is not used for rental service.