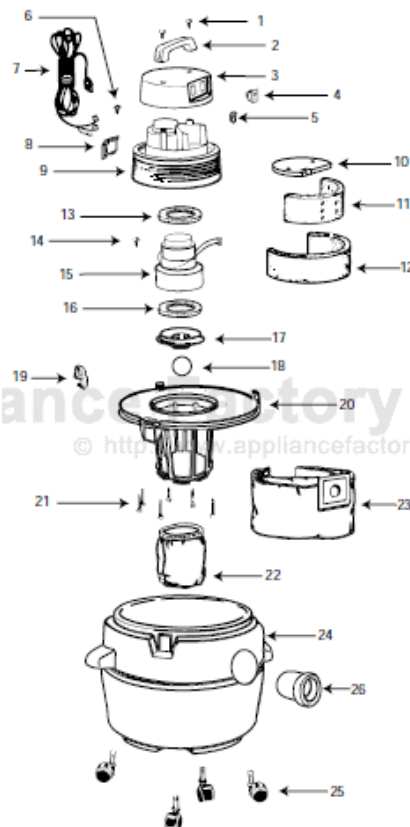


This Owner's Manual is provided and hosted by Appliance Factory Parts.



Shop Vac QL20ATSP Owner's Manual

[Shop genuine replacement parts for Shop Vac
QL20ATSP](#)

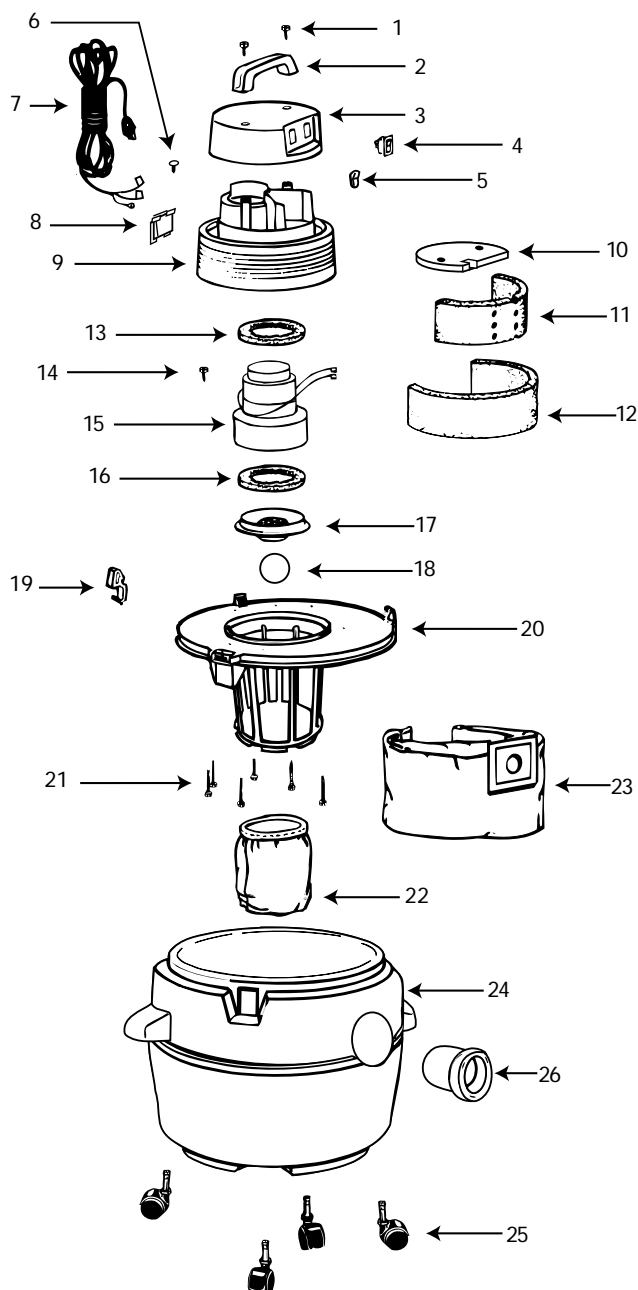


[Find Your Shop Vac Vacuum Cleaner Parts - Select From 487 Models](#)

----- Manual continues below -----

Model QL20ATSP

Catalog 925-25-10
(6 Gal.)



ITEM	DESCRIPTION	PART NO.
1	1/4 x 3/4" Ig. Screw	15146-99-6
2	Top handle	24105-00-9
3	Motor housing cover	24106-06-4
4	Receptacle	99344-50-9
5	Switch	82319-00-5
6	Screw 8 x 1/2 PH Pan HD	15007-99-0
7	Power cord	25800-27-7
8	Cord retainer	24111-07-2
9	Motor housing	24107-14-6
10	Foam insert cover	24125-00-7
11	Inner housing acoustical foam	12904-00-9
12	Outer housing acoustical foam	12905-03-0
13	Upper motor gasket	20700-00-1
14	#10 - 24 x 1/2" lg. ground screw	17008-99-6
15	Motor	19400-45-6
16	Lower motor gasket	20716-00-7
17	Grid plate	88607-00-7
18	Ball float	00811-00-0
19	Latch	85501-01-3
20	Lid/cage assembly	89670-21-0
21	#10 x 3/4"lg. Screw	15039-99-3
22	Super performance cloth filter bag	90115-62-7
23	High quality collection filter bag	91904-10-2
24	Tank assembly (6 gal.)	84993-97-1
25	Caster	67720-00-3
26	Inlet fitting	21750-01-3

Standard Accessories:

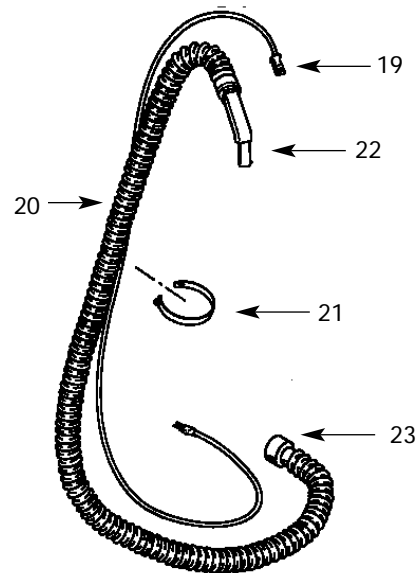
- 6' (1.83m) x 1 1/4" (3.18cm) Hose
- (2) 1 1/4" (3.18 cm) Metal extension wands
- 1 1/4" (3.18 cm) Crevice tool
- 1 1/4" (3.18 cm) Round brush
- 1 1/4" (3.18 cm) Gulper nozzle
- Dual surface selector nozzle

Limited One-Year Warranty

Shop-Vac Corporation warrants all Industrial, Commercial, and Contractor vacuum cleaners for one year from date of purchase to correct by repair or parts replacement without charge any product defect due to faulty material or workmanship, provided that the vacuum cleaner is not used for rental service.



ITEM	DESCRIPTION	PART NO.
1	Cover	78776-60-6
2	Bumper	78782-00-0
3	Rubber channel	50705-00-3
4	#10 x 3/4" (Type BT) Phillips pan head screw	15088-99-0
5	Power cord	78791-00-1
6	Swivel retainer	78778-01-6
7	Swivel fitting	78779-01-4
8	Wire nut	05001-99-5
9	#6 x 1" (Type BT) Phillips pan head screw	15117-99-7
10	Belt	78798-00-6
11	Motor	62516-96-0
12	Bearing holder	78786-01-9
13	Brush roller	78783-02-4
14	Roller	78781-00-2
15	Base	78777-01-8
16	Wheel	78780-00-4
17	Axle	78785-00-3
18	1 1/4", Metal extension wand	37711-01-7
19	Intermediate cord	78792-00-9
20	6 ft. x 1 1/4" Hose assembly	53305-25-6
21	Vinyl strap	10701-01-9
22	Curved hose end	31386-14-7
23	Hose end (tank adapter) Power nozzle assembly (complete)	30800-04-9 78790-97-9



NOTE: When servicing, use only identical replacement parts.

