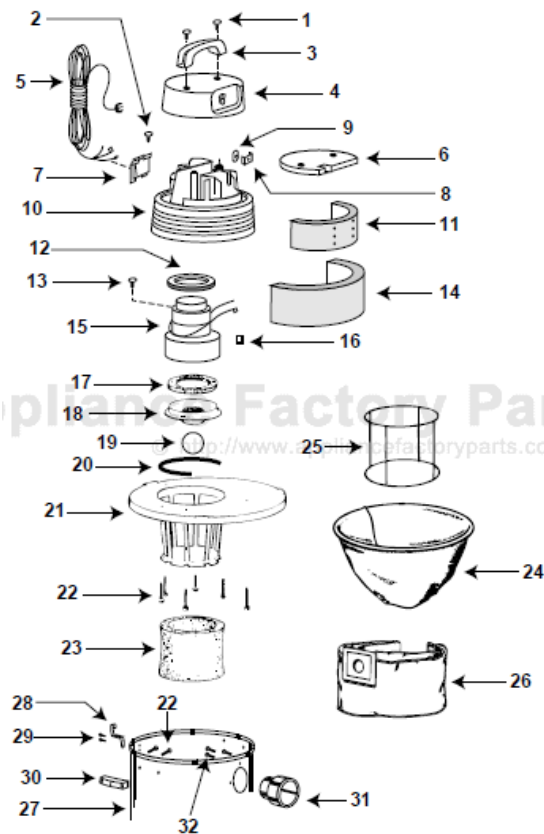


# Shop Vac QL20TS Owner's Manual

[Shop genuine replacement parts for Shop Vac QL20TS](#)



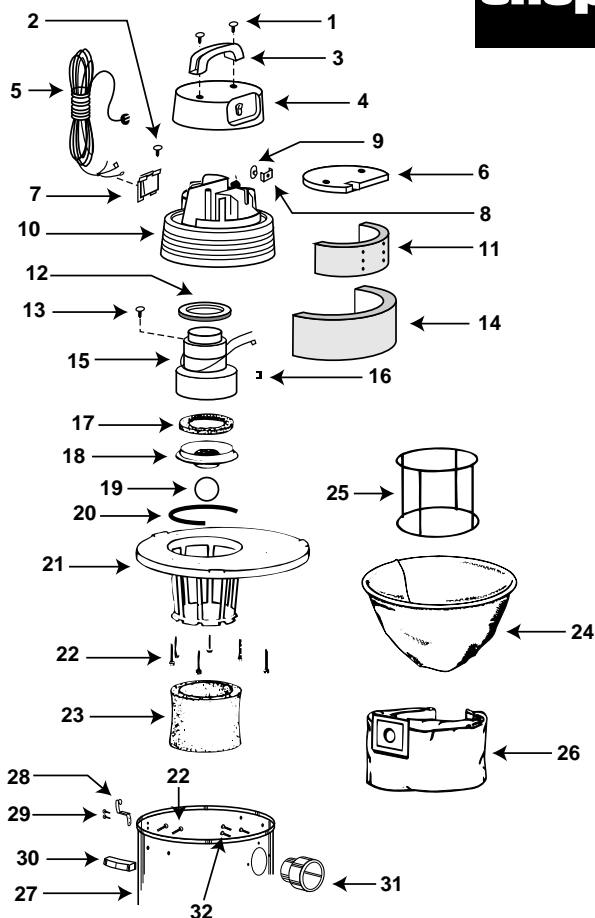
[Find Your Shop Vac Vacuum Cleaner Parts - Select From 487 Models](#)

----- Manual continues below -----

# Model QL20TS



Catalog 925-56-10  
(6 Gal. s/s)



ITEM	DESCRIPTION	PART NO.
1	Screw truss head 1/4" x 3/4", type AB	15146-99-6
2	Screw #8 x 1/2 Ph pan hd, type AB	15007-99-0
3	Handle	24105-00-9
4	Motor housing cover assembly	24106-75-9
5	Power cord	25800-09-5
6	Foam insert cover	24125-00-7
7	Cord retainer	24111-07-2
8	Switch box	24110-00-9
9	Switch	12100-26-9
10	Motor housing	24107-06-2
11	Inner housing, acoustical foam	12904-00-9
12	Upper motor gasket	20700-00-1
13	Ground screw	17008-99-6
14	Outer housing, acoustical foam	12905-03-0
15	Motor	17300-97-1
16	Wire nut	05001-99-5
17	Lower motor gasket	20716-00-7
18	Grid plate	88607-00-7
19	Ball float	00811-00-0
20	Strip gasket	20711-00-8
21	Lid cage assembly	89655-00-5
22	#10 x 3/4" Hex head screw	15039-99-3
23	Foam sleeve	90585-62-1
24	Full polyester filter	90637-00-0
25	Full filter frame	30037-00-6
26	High efficiency collection filter bag	91905-10-9
27	Tank assembly	10460-97-0
28	Metal tank clamp	01400-00-1
29	Rivet	03002-99-5
30	Handle	93551-00-0
31	Inlet fitting	21720-01-6
32	Screw #10 x 5/8" hex, type BF	15054-99-2

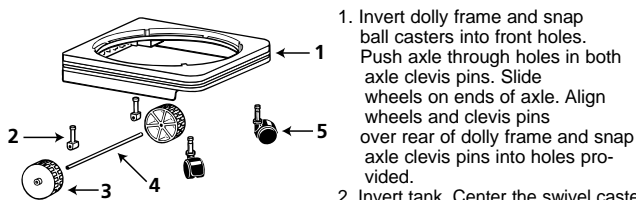
### Limited One-Year Warranty

Shop-Vac Corporation warrants all Industrial, Commercial, and Contractor vacuum cleaners for one year from date of purchase to correct by repair or parts replacement without charge any product defect due to faulty material or workmanship, provided that the vacuum cleaner is not used for rental service.

### Standard Accessories:

- 10' (3.05 m) x 1 1/4" (3.18 cm) Hose
- (2) Metal extension wands
- 10" (25.4 cm) Combination nozzle w/ squeegee insert
- 1 1/4" (3.18 cm) Crevice tool
- 1 1/4" (3.18 cm) Round brush
- 1 1/4" (3.18 cm) Gulper nozzle
- Dual surface selector nozzle

ITEM	DESCRIPTION	PART NO.
1	Dolly frame	21330-01-4
2	Clevice pin	21328-00-0
3	4" Plastic wheel (10.16 cm)	21329-00-8
4	Axle	21332-00-2
5	2" Caster (5.08 cm)	67720-00-3



1. Invert dolly frame and snap ball casters into front holes. Push axle through holes in both axle clevice pins. Slide wheels on ends of axle. Align wheels and clevice pins over rear of dolly frame and snap axle clevice pins into holes provided.

2. Invert tank. Center the swivel casters with tank inlet and snap dolly frame onto bottom of tank. Install filters as required. Replace tank cover and make sure buckles are clamped securely over raised "Clamp" area on lid.

SC87517-33