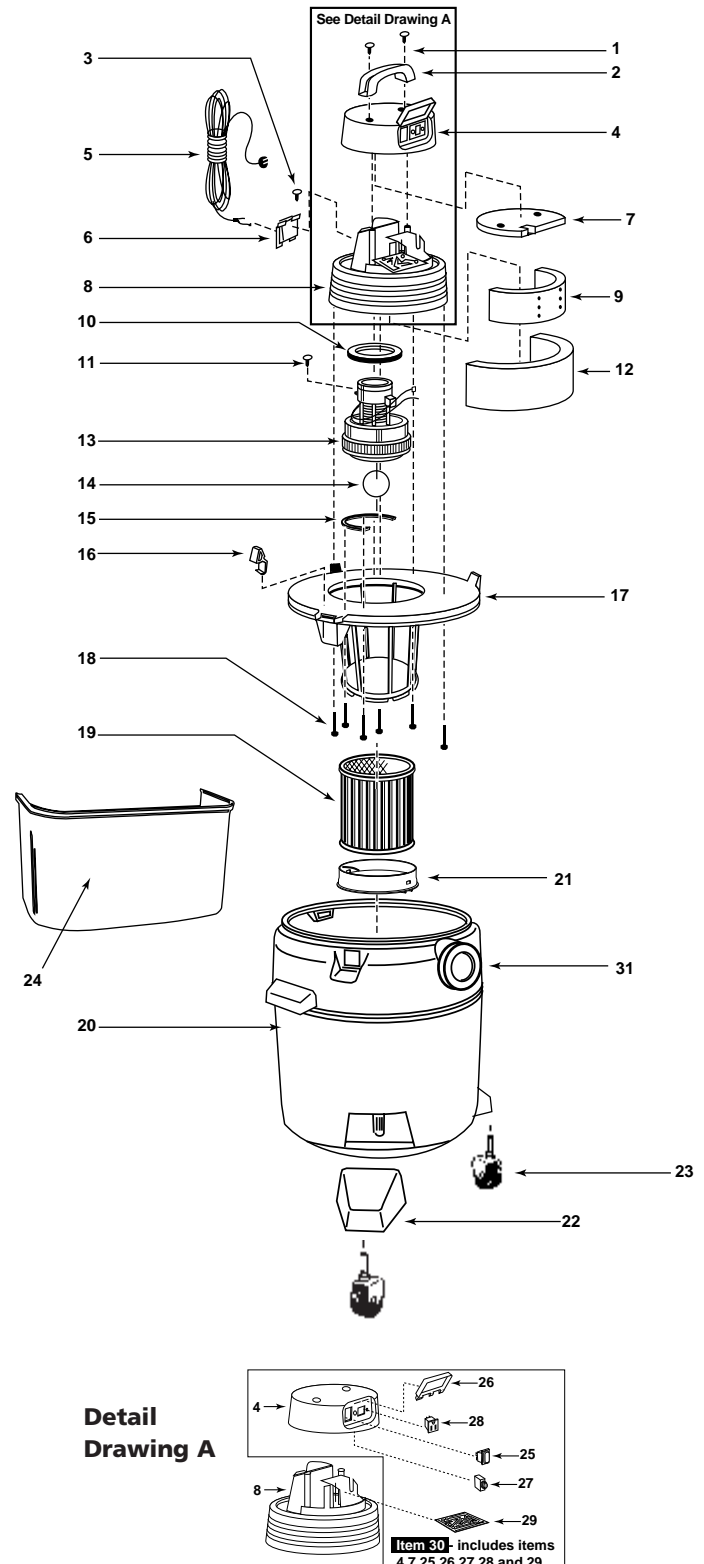


# shop·vac<sup>®</sup> Model QL30 OD

Catalog 925-65



ITEM	DESCRIPTION	PART NO.
1	Screw truss head 1/4 x 3/4 type AB	15146-99-6
2	Top handle	24105-00-9
3	Screw #8 x 1/2 Ph pan hd type AB	15007-99-0
4	Motor housing cover	24106-02-3
5	Cord	25800-01-2
6	Cord retainer	24111-07-2
7	Foam insert cover	24125-00-7
8	Motor housing	24107-66-6
9	Inner housing acoustical foam	12904-00-9
10	Upper motor gasket	20720-00-9
11	#10-24 x 1/2" lg. Ground screw	17008-99-6
12	Outer housing, acoustical foam	12905-00-6
13	†Motor w/TCO	18166-97
14	Ball float	00811-00-0
15	Strip gasket	20711-00-8
16	Latch	85501-01-3
17	Lid cage assembly	89657-14-2
18	#10 x 3/4 screw	15039-99-3
19	Cartridge filter	90304-62-9
20	Tank assembly	10482-97-4
21	Filter retainer	30080-00-6
22	Caster foot	49003-96-5
23	Caster (Pkg. of 4)	42017-96-2
24	Accessory caddy	85640-00-1
25	Double pole rocker switch	61957-96-5
26	Cover w/ labels	61958-96-3
27	Circuit breaker	12100-28-5
28	Receptacle	12100-27-7
29	Circuit board assembly	61956-97-5
30	Cover w/ items (4,7,25,26,27,28, & 29)	24106-51-0
31	Drain Cap	10620-20-1

(\*) Standard hardware item, available locally.

Rev. 4/98  
MSC030