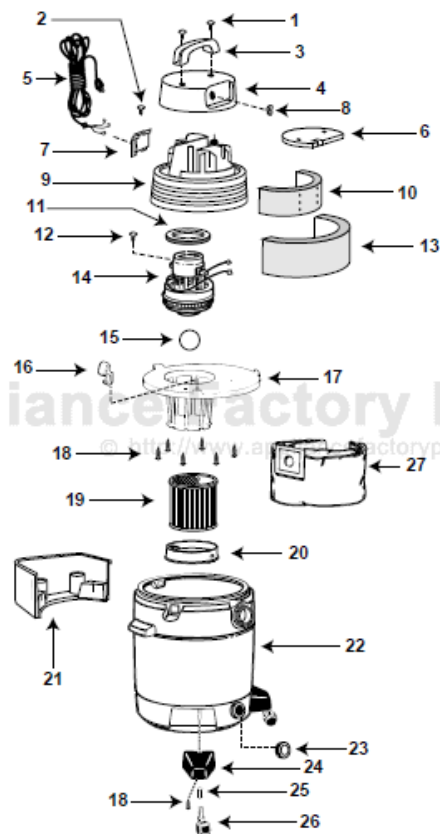


This Owner's Manual is provided and hosted by Appliance Factory Parts.



Shop Vac QL45B-IC Owner's Manual

[Shop genuine replacement parts for Shop Vac
QL45B-IC](#)

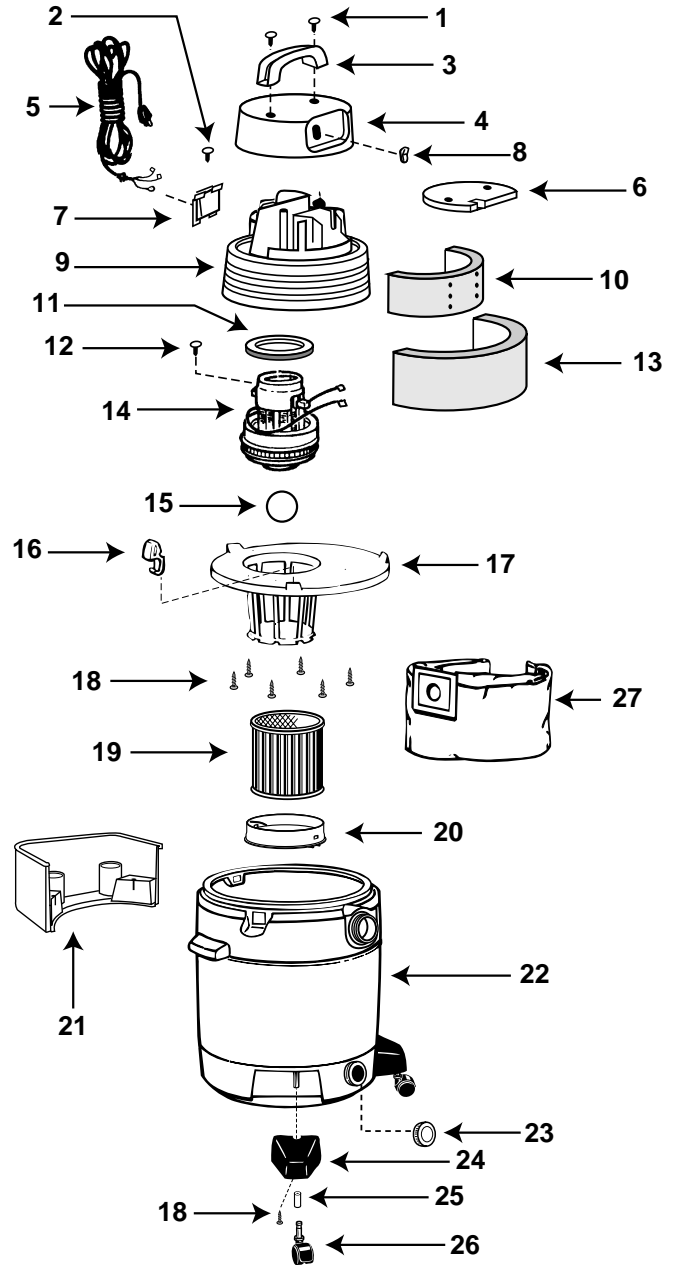


[Find Your Shop Vac Vacuum Cleaner Parts - Select From 487 Models](#)

----- Manual continues below -----

Model QL45B-IC

Catalog 9254110
(12 Gal.)



ITEM	DESCRIPTION	PART NO.
1	Screw Truss Head 1/4" x 3/4" Type AB	1514699
2	Screw #8 x 1/2" Ph Pan Hd Type AB	1500799
3	Handle	2410500
4	Motor Housing Cover	2410603
5	Cord	2580020
6	Foam Insert Cover	2412500
7	Cord Retainer	2411115
8	Switch	8231800
9	Motor Housing	2410764
10	Foam Motor Housing - Inner	1290400
11	Gasket - Upper Motor	2072000
12	Ground Screw #10 - 24 x 1/2" Type F	1700899
13	Foam Motor Housing - Outer	1290503
14	Motor	1817397
15	Ball Float	0081100
16	Lid Latch	8550101
17	Lid Cage & Latch Assembly	8967051
18	Screw Hex Head #10 x 3/4" Type AB	1503999
19	Cartridge Filter	9030462
20	Filter Retainer	3008000
21	Accessory Caddy	8564100
22	Tank Assembly	1047797
23	Drain Cap	1062020
24	Caster Foot	8565000
25	Caster Retainer	8565500
26	Caster	6774200
27	Collection Bag	9067262

STANDARD ACCESSORIES

- 6' x 2 1/2" Locking hose
- 2 - 2 1/2" Extension wands
- 6" Utility nozzle
- 14" Floor nozzle
- 14" Squeegee insert
- 2 1/2" Crevice tool

Limited One-Year Warranty

Shop-Vac Corporation warrants all Industrial, Commercial, and Contractor vacuum cleaners for one year from date of purchase to correct by repair or parts replacement without charge any product defect due to faulty material or workmanship.