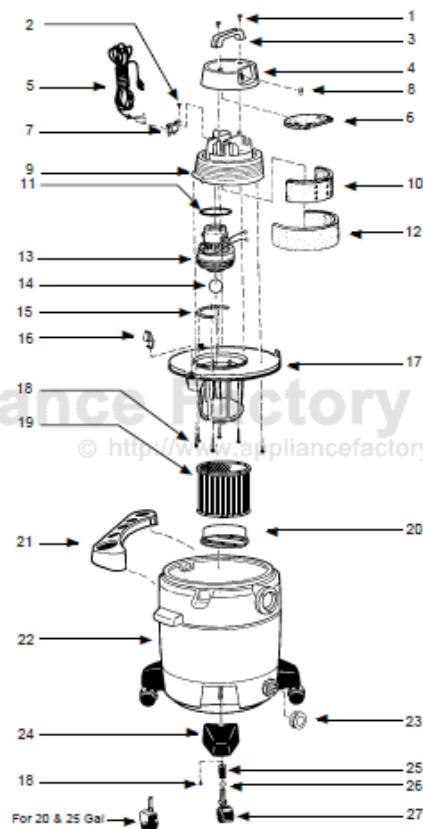


This Owner's Manual is provided and hosted by [Appliance Factory Parts](http://www.appliancefactoryparts.com).



# Shop Vac QL60B Owner's Manual

[Shop genuine replacement parts for Shop Vac QL60B](#)



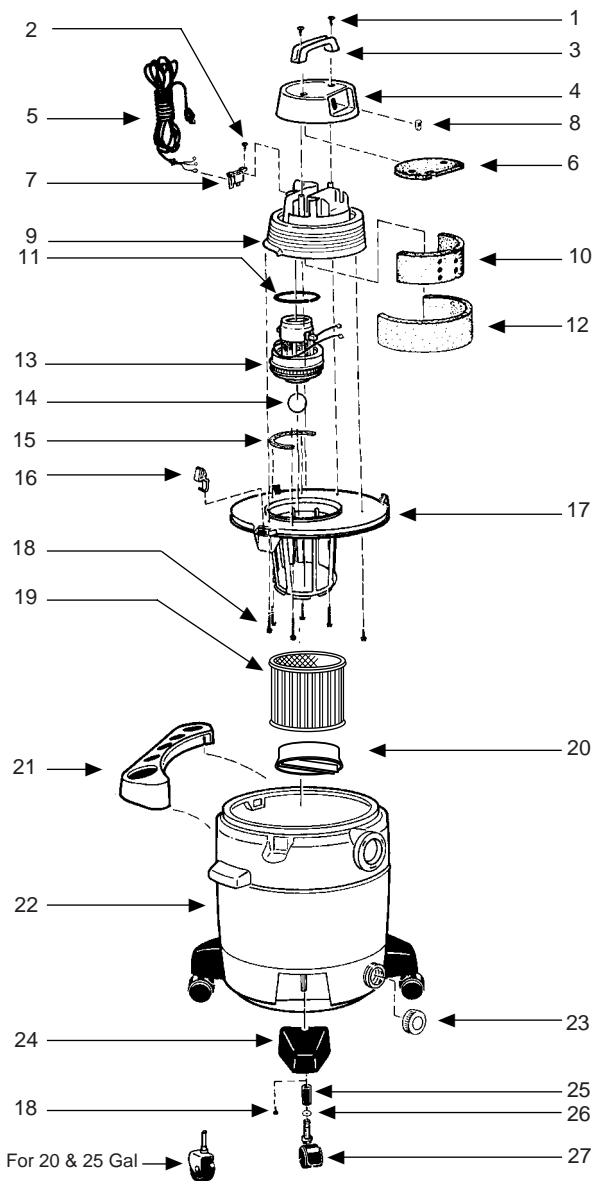
[Find Your Shop Vac Vacuum Cleaner Parts - Select From 487 Models](#)

----- Manual continues below -----

shop-vac®

# Model - QL60B

Catalog 925-68-00 (16 Gal.)  
 925-68-11 (16 Gal.)  
 925-69-00 (20 Gal.)  
 925-70-00 (25 Gal.)



ITEM	DESCRIPTION	PART NO.
1	Screw Truss Head 1/4 x 3/4 Type AB	15146-99-6
2	Screw #8 x 1/2 Ph Pan Hd Type AB	15007-99-0
3	Handle	24105-00-9
4	Motor Housing Cover	24106-03-1
5	Cord	25800-23-6
6	Foam Insert Cover	24125-00-7
7	Cord Retainer	24111-07-2
8	Switch	82318-00-7
9	Motor Housing	24107-12-0
10	Foam Motor Housing - Inner	12904-00-9
11	Gasket - Upper Motor	20720-00-9
12	Foam Motor Housing - Outer	12905-03-0
13	Motor	14968-97-8
14	Ball Float	00811-00-0
15	Strip Gasket	20711-00-8
16	Lid Latch	85501-01-3
17	Lid Cage & Latch Assembly	89887-14-5
18	Screw Hex Head #10 x 3/4 Type AB	15039-99-3
19	Cartridge Filter	90304-62-7
20	Filter Retainer	30080-00-6
21	Accessory/Tool Holder	84113-00-0
22	Tank Assembly (16 Gal) (20 Gal) (25 Gal)	84934-97-5 84935-97-2 84936-97-0
23	Drain Cap	10620-21-9
24	Caster Foot (16 Gal) (20 & 25 Gal)	85651-01-6 85651-00-8
25	Caster Retainer (16 Gal) (20 & 25 Gal)	85655-00-9 85656-00-7
26	Flatwasher (20 & 25 Gal)	07043-99-5
27	Castors (16 Gal) (20 & 25 Gal)	42017-96-2 42016-96-4

**Standard Accessories**

- 8' x 2 1/2" hose
- 2 - 2 1/2" extension wands
- 6" utility nozzle
- 14" floor nozzle
- 14" squeegee insert
- crevice tool

**THREE-YEAR HOME USE WARRANTY**

Your Shop-Vac® vacuum cleaner is warranted in normal household use, in accordance with the User Manual, against original defects in material and workmanship for a period of three years from date of purchase. Should this product be used for commercial or rental use, a 90 day limited warranty will apply. Shop-Vac Corporation warrants placing this vacuum cleaner in correct operating condition, by repair or parts replacement, during the warranty period, without charge. This warranty does not cover accessories. Use of non-recommended filters and/or accessories may void the manufacturer's warranty.