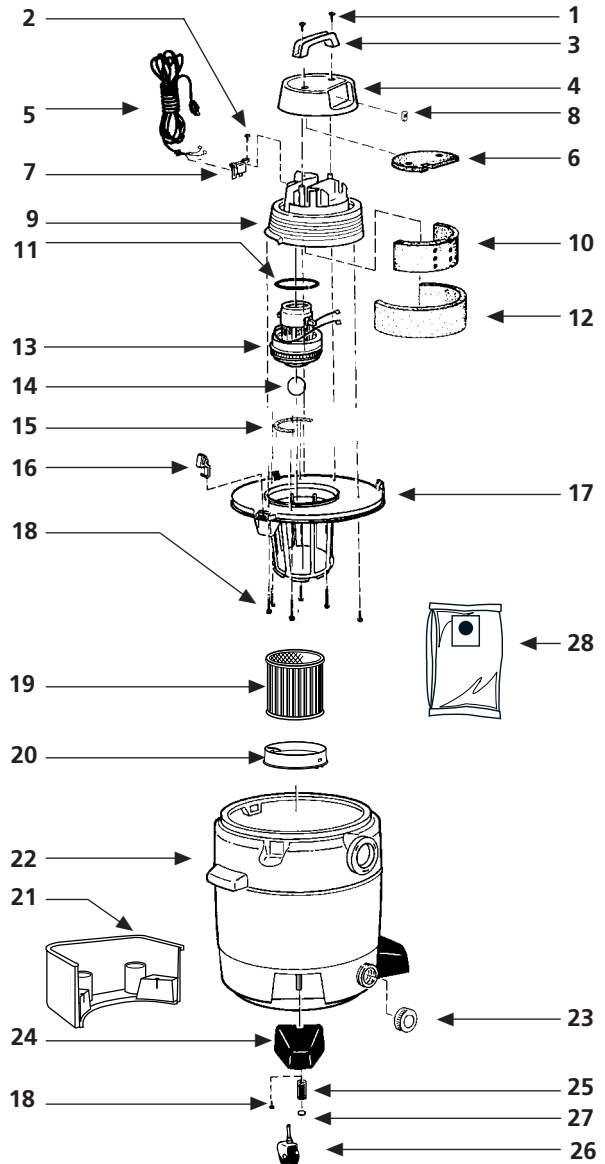


# Model QL60C-IC

Catalog 925-43-10  
(18 Gal.)



| ITEM | DESCRIPTION                            | PART NO.   |
|------|--|------------|
| 1    | Screw Truss Head 1/4" x 3/4" , Type AB | 15146-99-6 |
| 2    | Screw #8 x 1/2" Ph Pan Hd Type AB      | 15007-99-0 |
| 3    | Handle                                 | 24105-00-9 |
| 4    | Motor Housing Cover                    | 24106-03-1 |
| 5    | Cord                                   | 25800-23-6 |
| 6    | Foam Insert Cover                      | 24125-00-7 |
| 7    | Cord Retainer                          | 24111-07-2 |
| 8    | Switch                                 | 82318-00-7 |
| 9    | Motor Housing                          | 24107-12-0 |
| 10   | Foam Motor Housing - Inner             | 12904-00-9 |
| 11   | Gasket - Upper Motor                   | 20720-00-9 |
| 12   | Foam Motor Housing - Outer             | 12905-03-0 |
| 13   | Motor                                  | 14968-97-8 |
| 14   | Ball Float                             | 00811-00-0 |
| 15   | Strip Gasket                           | 20711-00-8 |
| 16   | Lid Latch                              | 85501-01-3 |
| 17   | Lid Cage & Latch Assembly              | 89887-14-5 |
| 18   | Screw Hex Head #10 x 3/4" Type AB      | 15039-99-3 |
| 19   | Cartridge Filter                       | 90304-00-7 |
| 20   | Filter Retainer                        | 30080-00-6 |
| 21   | Accessory Caddy                        | 85642-02-3 |
| 22   | Tank Assembly                          | 10479-97-0 |
| 23   | Drain Cap                              | 10620-20-1 |
| 24   | Caster Foot                            | 85651-00-8 |
| 25   | Caster Retainer                        | 85656-00-7 |
| 26   | Caster                                 | 67736-00-9 |
| 27   | Flatwasher                             | 07043-99-5 |
| 28   | Collection Bag                         | 90673-00-5 |

## Install casters and caddy as follows:

1. With tank cover removed, invert tank so the bottom is facing up.
2. Insert two caster feet into adjacent slots at front of tank. Secure with screws.



3. Insert accessory caddy into remaining slots at back of tank. Secure with screws.
4. Insert casters into caddy and supports by inserting the caster stems into the holes provided and applying pressure until you feel the casters are firmly in place.

## Limited One-Year Warranty

Shop-Vac Corporation warrants all Industrial, Commercial, and Contractor vacuum cleaners for one year from date of purchase to correct by repair or parts replacement without charge any product defect due to faulty material or workmanship, provided that the vacuum cleaner is not used for rental service. This warranty does not cover accessories.

### Standard Accessories:

- 6' (1.83m) x 2 1/2" (6.35cm) Hose
- (2) 2 1/2" (6.35cm) Extension wands
- 6" (15.24 cm) Utility nozzle
- 14" (35.56 cm) Floor nozzle
- 14" (35.56 cm) Squeegee insert
- 2 1/2" (6.35 cm) Crevice tool

SC87518-71