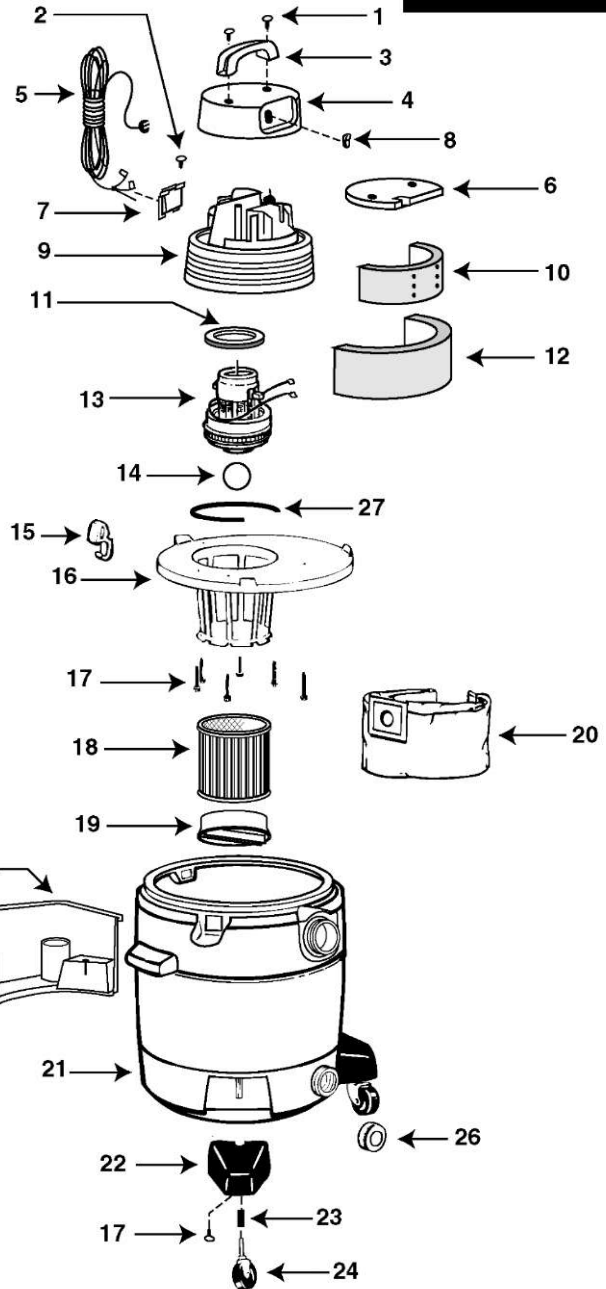


Model QL650-IC

Catalog 9252810 (8 Gal.)
9252910 (10 Gal.)



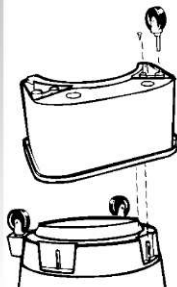
ITEM	DESCRIPTION	PART NO.
------	-------------	----------

1	Screw truss head 1/4" x 3/4", type AB	1514699
2	Screw #8 x 1/2 Ph pan head, type AB	1500799
3	Top handle	2410500
4	Motor housing cover	2410607
5	Power cord	2580028
6	Foam insert cover	2412500
7	Cord retainer	2411107
8	Switch	8231900
9	Motor housing	2410712
10	Inner housing, acoustical foam	1290400
11	Upper motor gasket	2072000
12	Foam motor housing - outer	1290503
13	Motor*	1497997
14	Ball float	0081100
15	Latch	8550101
16	Lid cage assembly	8965724
17	#10 x 3/4" Screw	1503999
18	Cartridge filter	9030462
19	Filter retainer	3008000
20	High quality collection filter bag (8 Gal.)	9190510
	(10 Gal.)	9190610
21	Tank assembly (8 Gal.)	1046197
	(10 Gal.)	1045897
22	Caster foot	8565000
23	Retainer	8565500
24	Caster	6772200
25	Accessory caddy	8564000
26	Drain cap	1062020
27	Strip Gasket	2071100

* Motor brushes (15999-00)

Standard Accessories:

- 8' x 1-1/4" Hose
- (2) 1-1/4" Metal extension wands
- 10" Combination nozzle
- 10" Squeegee insert
- 1-1/4" Crevice tool
- 1-1/4" Round brush
- 1-1/4" Gulper nozzle
- Dual surface selector nozzle
- Accessory Caddy



Install casters and caddy as follows:

1. With tank cover removed, invert tank so the bottom is facing up.
2. Insert two caster supports into adjacent slots at front of tank. Secure with screws.
3. Insert accessory caddy into remaining slots at back of tank. Secure with screws.
4. Insert casters into caddy and supports by inserting the caster stems into the holes provided and applying pressure until you feel the casters are firmly in place.

LIMITED ONE YEAR WARRANTY

Shop-Vac Corporation warrants all Industrial, Commercial, and Contractor vacuum cleaners for one year from date of purchase to correct by repair or parts replacement without charge any product defect due to faulty material or workmanship, provided that the vacuum cleaner is not used for rental service.