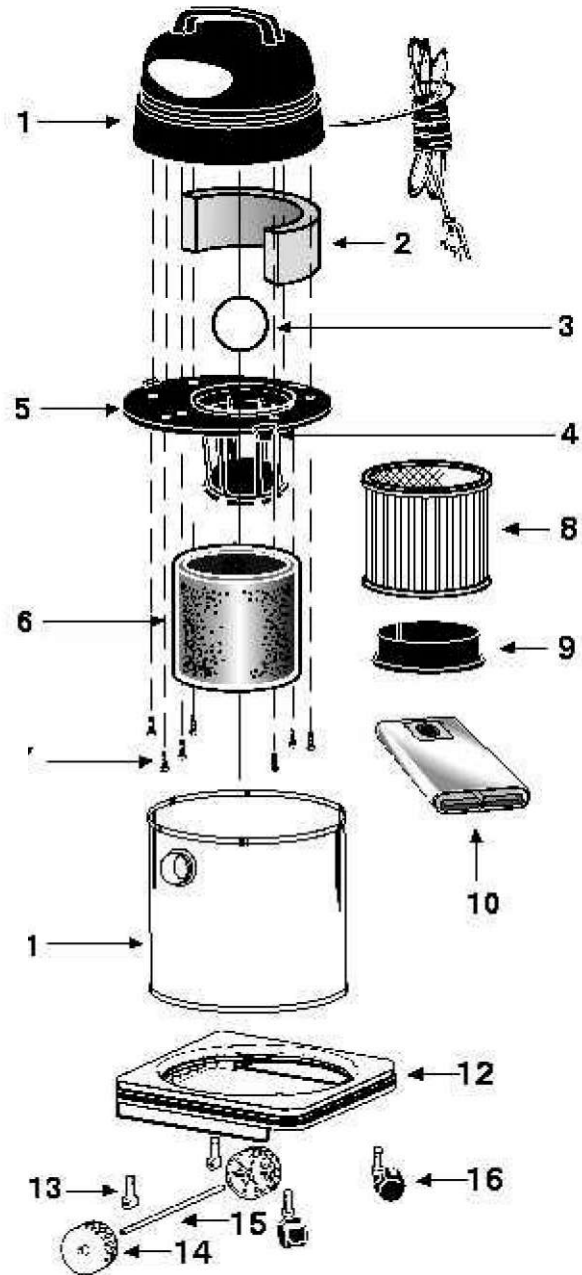


shop.vac

Model - QPL45A

Catalog 9250800
Floormaster (4 Gal. S/S)



OEM DESCRIPTION PART NO.

1	Power Unit Assembly	BJ1 8397
£	Foam insert	1290508
3	[sail Float	0081100
4	Lid Latch	8550109
5	Lid Cage £ Latch Assembly	8957062
6	Foam Sleeve	9058552
7	Screw Hex Head #10 x 3/4 Type AB	1503999
8	Cartridge Filter	9030462
9	Filter Retainer	3008000
10	Collection Filter Bag	9057162
11	Tank Assembly	5041297
12	Dolly Frame	2133005
1H	device Pin	2132 £00
14	4" Plastic Wheel (10.1 Gem)	2132900
15	Axle	2133200
16	V Caster (5.08cm)	5772000

STANDARD ACCESSORIES

- 8' x 1 1/4" hose with curved end
- 2 - 1 1/4" chrome extension wands
- 10" wet/dry nozzle
- 10" squeegee insert

- multi-surface nozzle
- round brush
- crevice tool
- gulper nozzle

THREE-YEAR HOME USE WARRANTY

Your Shop-Vac® vacuum cleaner is warranted in normal household use, in accordance with the User Manual, against original defects in material and workmanship for a period of three years from date of purchase. Should this product be used for commercial or rental use, a 90 day limited warranty will apply. Shop-Vac Corporation warrants placing this vacuum cleaner in correct operating condition, by repair or parts replacement, during the warranty period, without charge. This warranty does not cover accessories. Use of non-recommended filters and/or accessories may void the manufacturer's warranty.