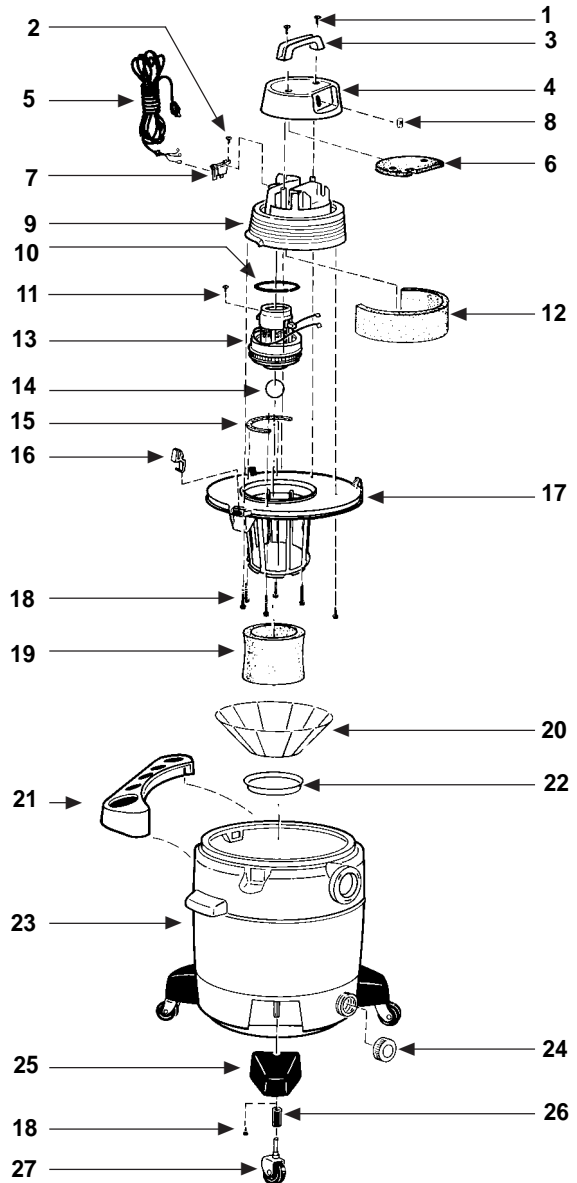


shop-vac®

# Model QS30A

Catalog 925-53-00 (8 Gal.)  
 925-54-00 (10 Gal.)  
 925-54-11 (10 Gal.)  
 925-54-31 (10 Gal.)  
 925-55-00 (12 Gal.)



ITEM	DESCRIPTION	PART NO.
1	Screws Truss Head 1/4 x 3/4 Type AB	15146-99-6
2	Screw #8 x 1/2 Ph Pan Hd Type AB	15007-99-0
3	Handle	24100-00-0
4	Motor Housing Cover	24101-01-6
5	Cord	25800-16-0
6	Foam Insert Cover	24122-00-4
7	Cord Retainer	24111-15-5
8	Switch	82318-00-7
9	Motor Housing	24102-03-3
10	Gasket - Upper Motor	20720-00-9
11	Ground Screw #10-24 x 1/2 Type F	17008-99-6
12	Foam Motor Housing - Outer	12905-04-8
13	Motor	18172-97-3
14	Ball Float	00811-00-0
15	Strip Gasket	20711-00-8
16	Lid Latch	85501-01-3
17	Lid Cage & Latch Assembly	89657-14-2
18	Screw Hex Head #10 x 3/4 Type AB	15039-99-3
19	Foam Sleeve	90585-62-1
20	Reusable Dry Filter	90107-62-4
21	Accessory/Tool Holder (8 & 10 Gal.)	84111-00-4
	" " (12 Gal.)	84112-00-2
22	Filter Ring	30065-00-7
23	Tank Assembly (8 Gal.)	84931-97-1
	" " (10 Gal.)	84932-97-1
	" " (12 Gal.)	84933-97-1
24	Drain Cap (12 Gal.)	10620-21-9
25	Caster Foot	85650-00-0
26	Caster Retainer	85655-00-9
27	Castors (Pkg. of 4)	42042-96-0

**Standard Accessories**

- 7' x 1 1/4" hose with extension nozzle
- 2 - 1 1/4" extension wands
- 10" wet/dry nozzle
- 10" squeegee insert

**THREE-YEAR HOME USE WARRANTY**

Your Shop-Vac® vacuum cleaner is warranted in normal household use, in accordance with the User Manual, against original defects in material and workmanship for a period of three years from date of purchase. Should this product be used for commercial or rental use, a 90 day limited warranty will apply. Shop-Vac Corporation warrants placing this vacuum cleaner in correct operating condition, by repair or parts replacement, during the warranty period, without charge. This warranty does not cover accessories. Use of non-recommended filters and/or accessories may void the manufacturer's warranty.