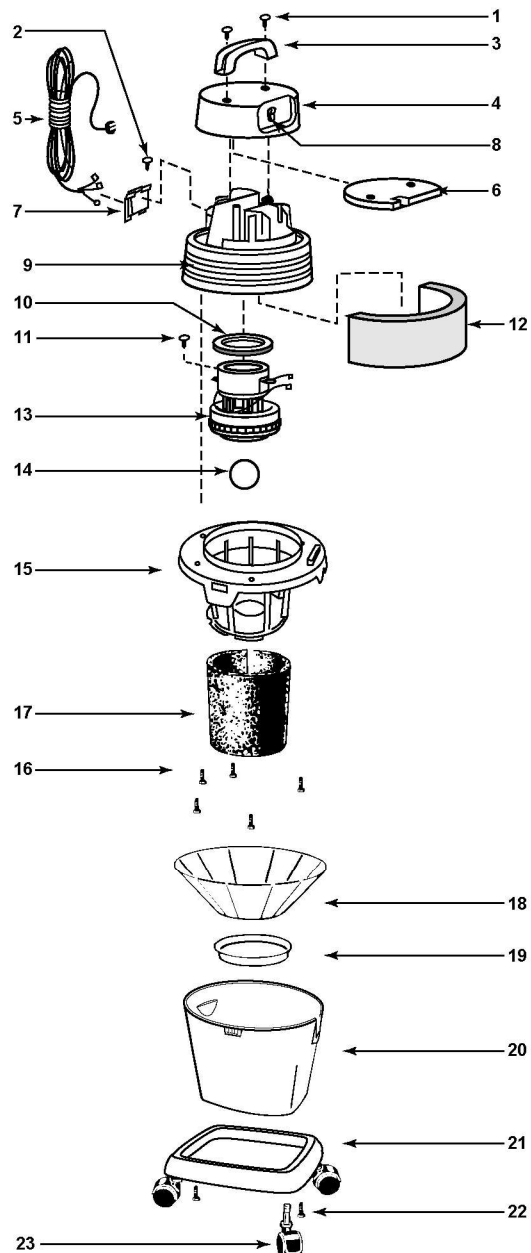


Model - QS60A



| ITEM | DESCRIPTION | PART NO. |
|------|------------------------------------|------------|
| 1 | Screw Truss Head 1/4 x 3/4 Type AB | 15146-99-6 |
| 2 | Screw #8 x 1/2 Ph Pan Hd Type AB | 15007-99-0 |
| 3 | Handle | 24100-01-8 |
| 4 | Motor Housing Cover | 24101-03-2 |
| 5 | Cord | 25800-18-6 |
| 6 | Foam Insert Cover | 24122-00-4 |
| 7 | Cord Retainer | 24111-15-5 |
| 8 | Switch | 82318-00-7 |
| 9 | Motor Housing | 24102-34-5 |
| 10 | Gasket - Upper Motor | 20720-00-9 |
| 11 | Ground Screw #10 - 24 x 1/2 Type F | 17008-99-6 |
| 12 | Foam Motor Housing - Outer | 12905-04-8 |
| 13 | Motor | 18171-97-5 |
| 14 | Ball Float | 00811-00-0 |
| 15 | Lid Cage | 89887-14-5 |
| 16 | Screw Hex Head #10 x 3/4 Type AB | 15039-99-3 |
| 17 | Foam Sleeve | 90585-62-1 |
| 18 | Reusable dry filter | 90107-62-4 |
| 19 | Filter Ring | 30065-00-7 |
| 20 | Tank Assembly | 31504-97-0 |
| 21 | Dolly | 31550-00-7 |
| 22 | Screw #8 x 1/2 Ph Pan Hd Type A | 15015-99-3 |
| 23 | Casters (Pkg. of 4) | 49018-96-3 |

STANDARD ACCESSORIES

- 6' x 1¹/₄" hose with extension nozzle
- 2 - 1¹/₄" extension wands
- 12" deluxe wet/dry nozzle
- 12" squeegee insert
- 12" brush insert
- round brush
- crevice tool
- gulper nozzle

THREE-YEAR HOME USE WARRANTY

Your Shop-Vac® vacuum cleaner is warranted in normal household use, in accordance with the User Manual, against original defects in material and workmanship for a period of three years from date of purchase. Should this product be used for commercial or rental use, a 90 day limited warranty will apply. Shop-Vac Corporation warrants placing this vacuum cleaner in correct operating condition, by repair or parts replacement, during the warranty period, without charge. This warranty does not cover accessories. Use of non-recommended filters and/or accessories may void the manufacturer's warranty.