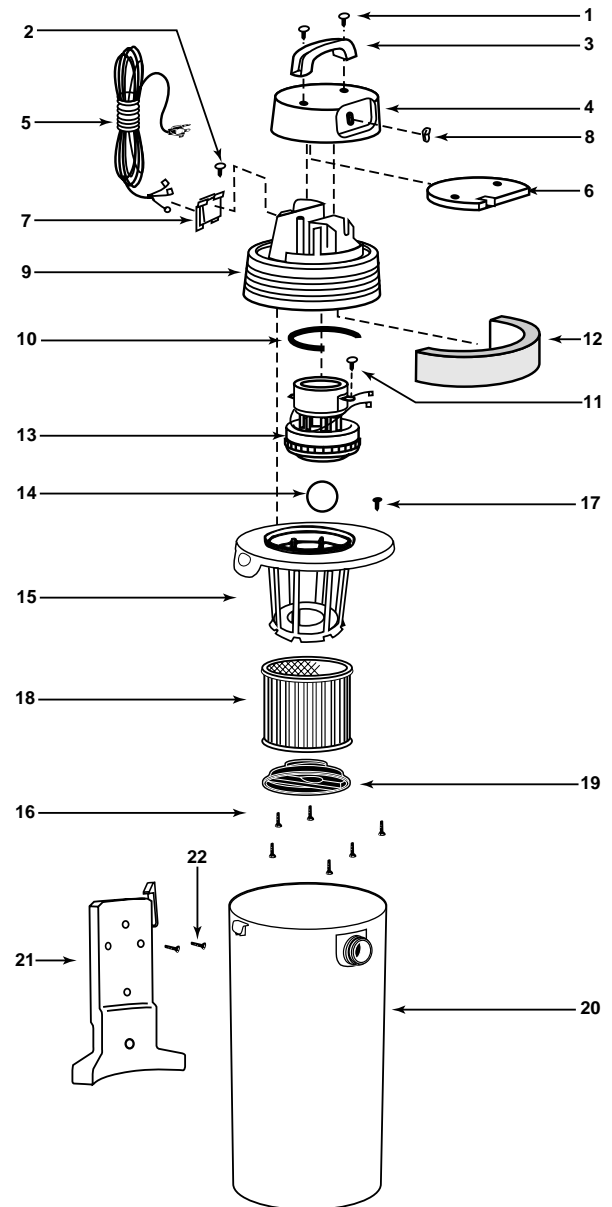


Model - QSH30



ITEM	DESCRIPTION	PART NO.
1	Screw Truss Head #1/4 x 3/4 Type AB	1514699
2	Screw #8 x 1/2 Ph Pan Hd Type AB	1500799
3	Handle	2410000
4	Motor Housing Cover	2410101
5	Cord	2580016
6	Foam Insert Cover	2412200
7	Cord Retainer	2411115
8	Switch	8231810
9	Motor Housing	2410232
10	Gasket - Upper Motor	2072000
11	Ground Screw #10 - 24 x 1/2 Type F	1700899
12	Foam Motor Housing - Outer	1290504
13	Motor	1818497
14	Ball Float	0081100
15	Lid Cage	3181801
16	Screw Hex Head #10 x 3/4 Type AB	1503999
17	Push in Fastener	7100399
18	Cartridge Filter	9039800
19	Filter Retainer	3183000
20	Tank Assembly	8327050
21	Wall Bracket	8328000
22	Hardware Pkg.	4904096

STANDARD ACCESSORIES

- 18' x 1¹/₄" hose with extension nozzle
- 2 - 2¹/₂" extension wands
- 10" wet/dry nozzle
- 10" squeegee insert
- wall bracket and tool holder
- round brush
- crevice tool
- gulper nozzle

THREE-YEAR HOME USE WARRANTY

Your Shop-Vac® vacuum cleaner is warranted in normal household use, in accordance with the User Manual, against original defects in material and workmanship for a period of three years from date of purchase. Should this product be used for commercial or rental use, a 90 day limited warranty will apply. Shop-Vac Corporation warrants placing this vacuum cleaner in correct operating condition, by repair or parts replacement, during the warranty period, without charge. This warranty does not cover accessories. Use of non-recommended filters and/or accessories may void the manufacturer's warranty.