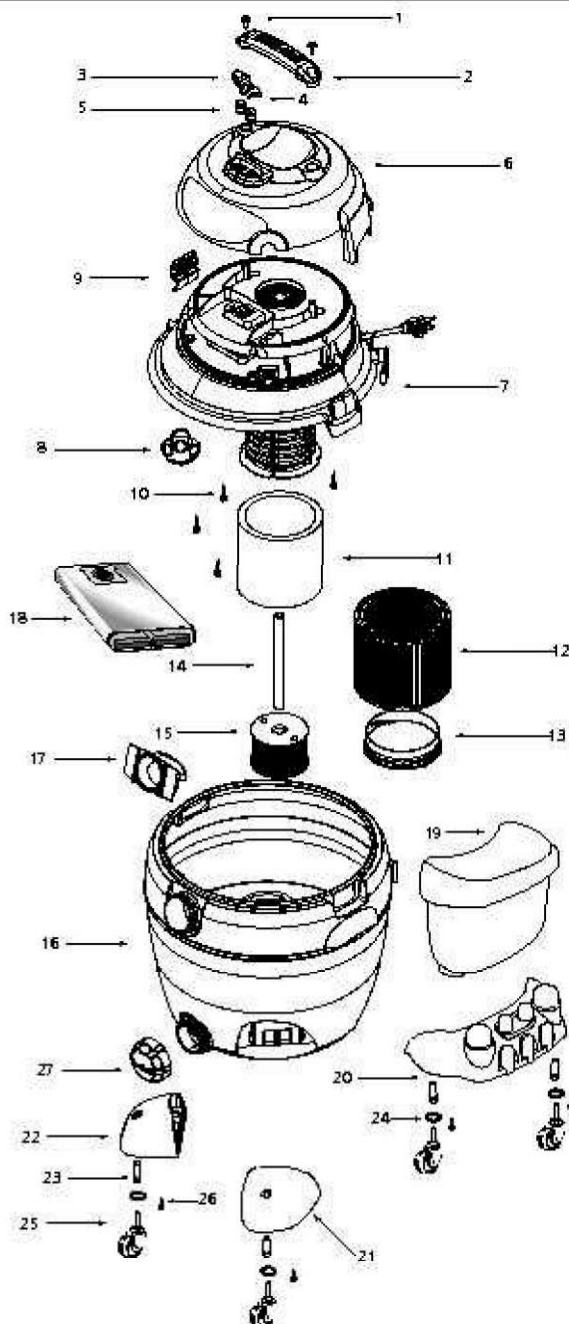


shop.vac

Model - QULP550

Catalog 9601400
(14 Gal.)



ITEM	DESCRIPTION	PART NO.
i	Screw 1 x 3M Tri lobe T25 HD	1516499
2	Handle	7444400
B	Switch Button - On	7414-200
4	Switch Button - Off	7414210
5	Spring	2802899
6	Motor Cover Assembly	1944050
7	Power Unit Assembly	7261297
8	Outlet Fitting Cap	7414022
9	Lid Latch	7444500
10	Screw 10x B/4 Tri lobe "F25 Head	1516599
11	Foam Sleeve	9058562
12	Cartridge Filter (Includes Item IB)	90B0462
IB	Filter Retainer	B008000
14	Pickup Tube	272 B101
15	Pickup Cage Assembly	7412250
16	Tank Assembly	7B62997
17	Inlet Deflector	741B100
13	Collection Bag	9066262
19	Accessory Basket	9064800
20	Rear Caster Dolly	74B12B5
21	Casterfoot A	74B1B00
22	Casterfoot B	74B1B10
2B	Retainer	3565700
24	Flatwasher	0704B99
25	Caster	677B900
26	Screw 10 x B/4 SL Hex Head	150B999
27	Drain Cover	7*1 B620

STANDARD ACCESSORIES

- 8' x 2-1/2" hose
- 2 - 2-1/2" extension wands
- 14" Floor nozzle w/brush
- 14" Squeegee insert
- Concentrator nozzle
- 2-1/2" Crevice tool
- 8" Utility nozzle
- Hose holder
- Elbow grip

FOUR-YEAR HOME USE WARRANTY

Your Shop-Vac® vacuum cleaner is warranted in normal household use, in accordance with the User Manual, against original defects in material and workmanship for a period of four years from date of purchase. Should this product be used for commercial or rental use, a 90 day limited warranty will apply. Shop-Vac Corporation warrants placing this vacuum cleaner in correct operating condition, by repair or parts replacement, during the warranty period, without charge. This warranty does not cover accessories. Use of non-recommended filters and/or accessories may void the manufacturer's warranty.