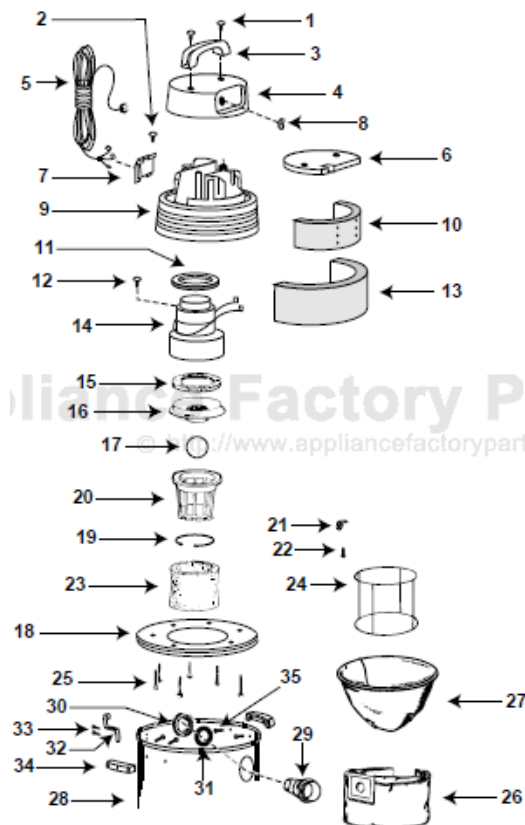


Shop Vac QXL1400A Owner's Manual

[Shop genuine replacement parts for Shop Vac
QXL1400A](#)



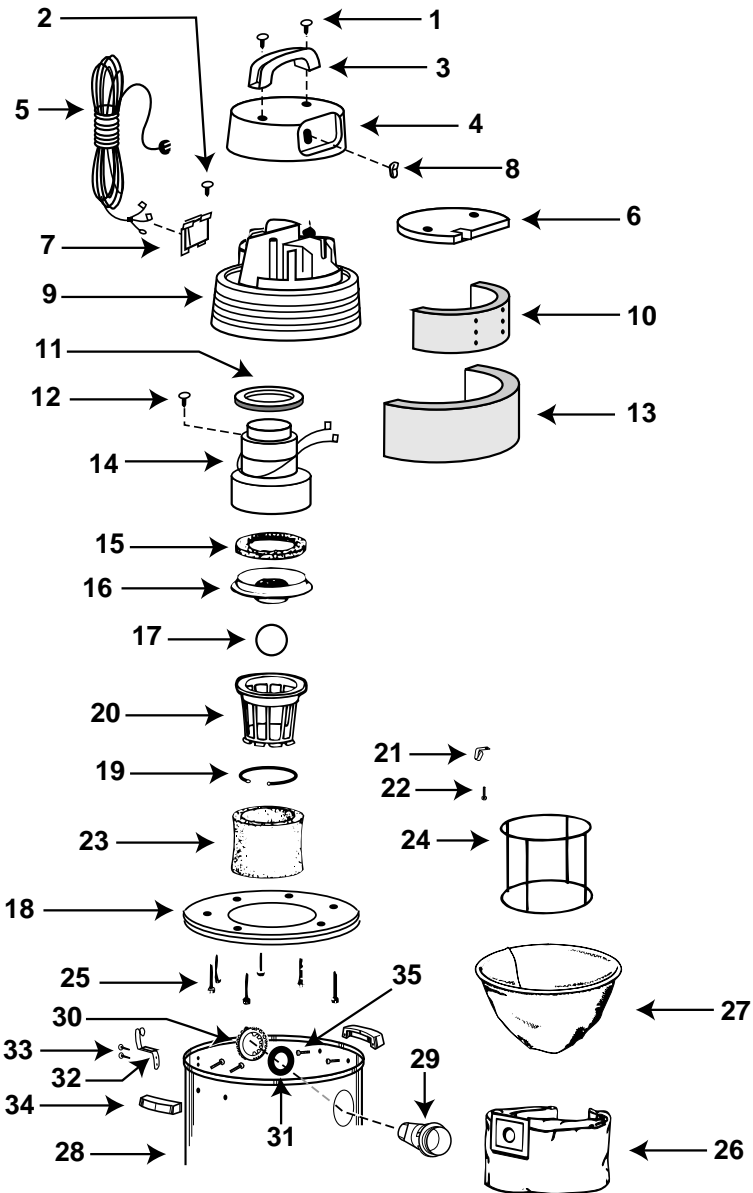
[Find Your Shop Vac Vacuum Cleaner Parts - Select From 487 Models](#)

----- Manual continues below -----

Model QXL1400A

220V~

Catalog 925-22-50
(10 Gal. S/S)



ITEM	DESCRIPTION	PART NO.
1	Screw truss head 1/4" x 3/4", type AB	15146-99-6
2	Screw #8 x 1/2 Ph pan hd., type AB	15007-99-0
3	Top handle	24105-00-9
4	Motor housing cover	24108-02-9
5	Power cord	25800-25-1
6	Foam insert cover	24125-00-7
7	Cord retainer	24111-22-1
8	Switch	82319-00-5
9	Motor housing	24109-05-0
10	Inner housing, acoustical foam	12904-00-9
11	Upper motor gasket	20700-00-1
12	#10 - 24 x 1/2" lg. Ground screw	17008-99-6
13	Outer housing, acoustical foam	12905-03-0
14	Motor	19400-48-0
15	Lower motor gasket	20716-00-7
16	Grid plate	88607-00-7
17	Ball float	00811-00-0
18	Lid	89875-11-6
19	Strip Gasket	20711-05-7
20	Filter cage	87901-00-5
21	Filter frame clips	99384-00-0
22	#10 x 1/2" Screw, type AB	15047-99-6
23	Foam sleeve	90585-62-1
24	Full Filter Frame	30037-00-6
25	#10 x 1" Screw	15096-99-3
26	High efficiency collection filter bag	91906-10-7
27	Full polyester filter	90638-00-8
28	Tank assembly	10455-97-0
29	Locking inlet	64510-10-0
30	Inlet lock ring	64511-00-9
31	Inlet gasket	07051-00-6
32	Metal tank clamp	01403-00-5
33	Rivet	03002-99-5
34	Handles	93551-00-0
35	#10 x 1/2" Screw	15039-99-3

Standard Accessories:

10' (3.05m) x 1 1/2" (3.81cm) Hose	14" (35.56cm) Floor brush insert
(2) 1 1/2" (3.81cm) Metal extension wands	14" (35.56cm) Carpet insert
14" (35.56cm) Deluxe master nozzle	1 1/2" (3.81cm) Crevice tool
14" (35.56cm) Double-blade squeegee insert	1 1/2" (3.81cm) Round brush
	6" (15.24cm) Utility nozzle

Limited One-Year Warranty

Shop-Vac Corporation warrants all Industrial, Commercial, and Contractor vacuum cleaners for one year from date of purchase to correct by repair or parts replacement without charge any product defect due to faulty material or workmanship, provided that the vacuum cleaner is not used for rental service.

SC87517-90