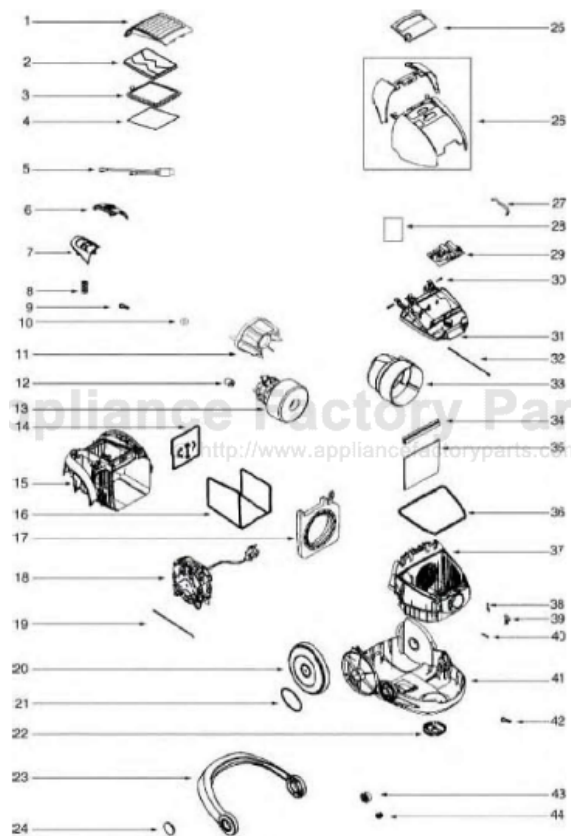


This Owner's Manual is provided and hosted by [Appliance Factory Parts](http://www.appliancefactoryparts.com).



Electrolux EL6988E Owner's Manual

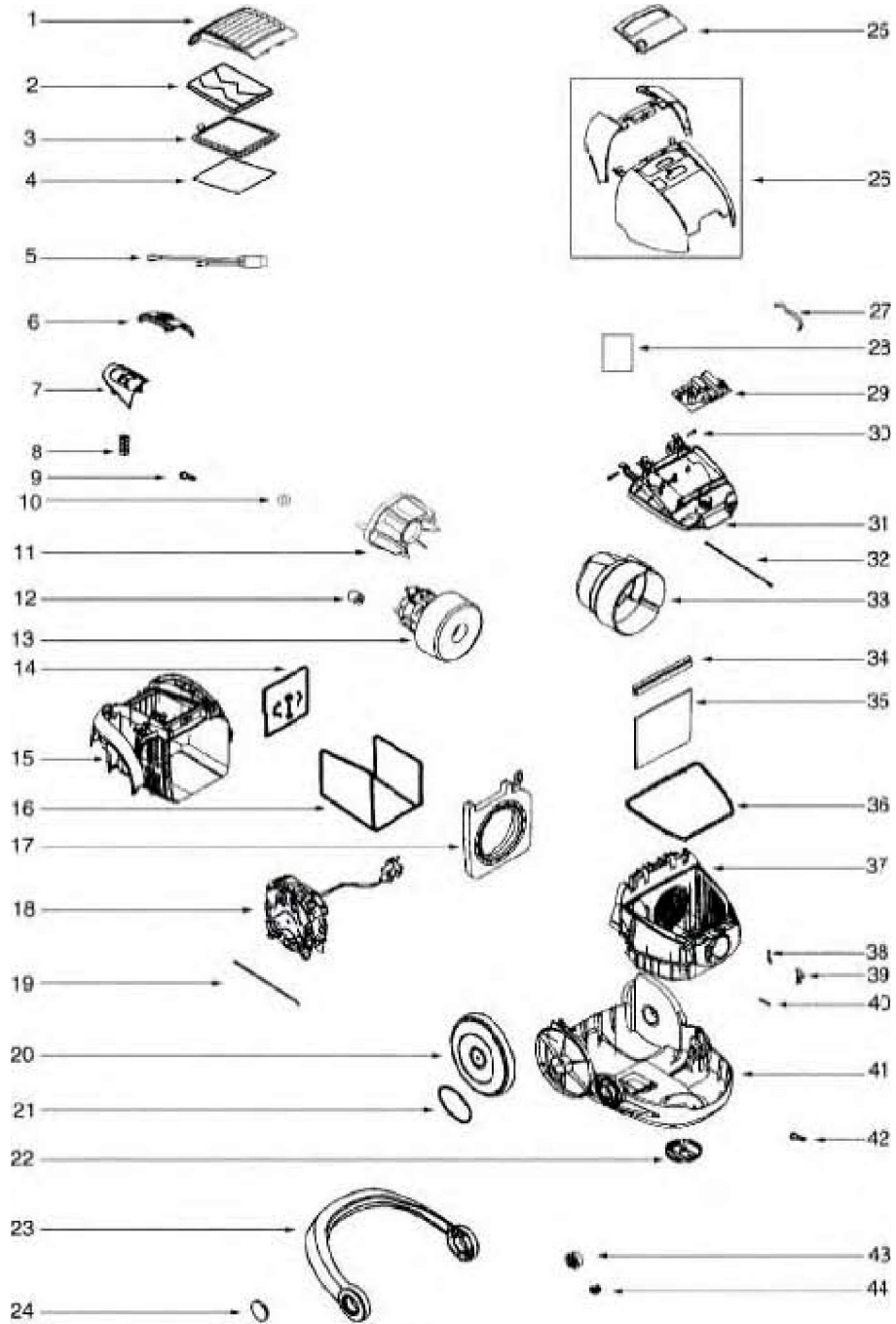
[Shop genuine replacement parts for Electrolux EL6988E](#)



[Find Your Electrolux Vacuum Cleaner Parts - Select From 68 Models](#)

----- Manual continues below -----

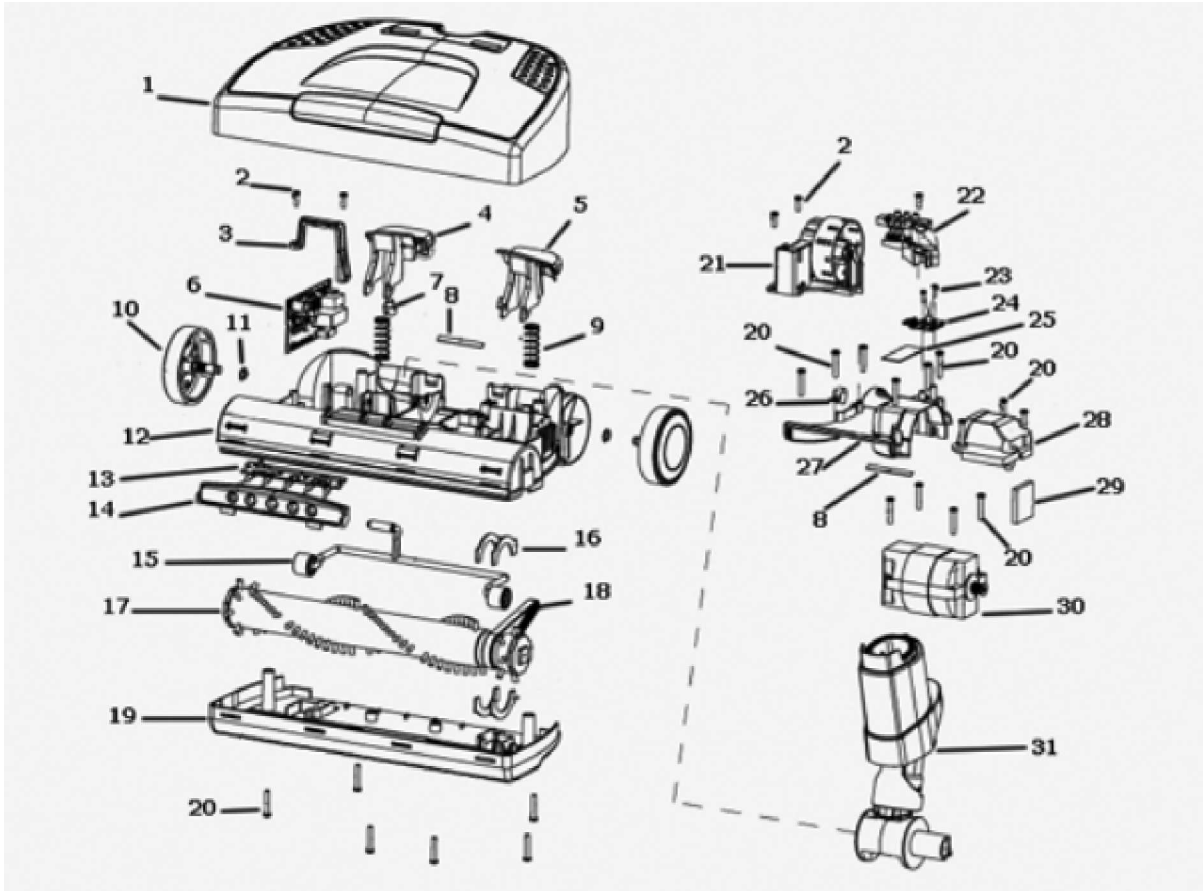
Canister - EL6988E



Canister - EL6988E

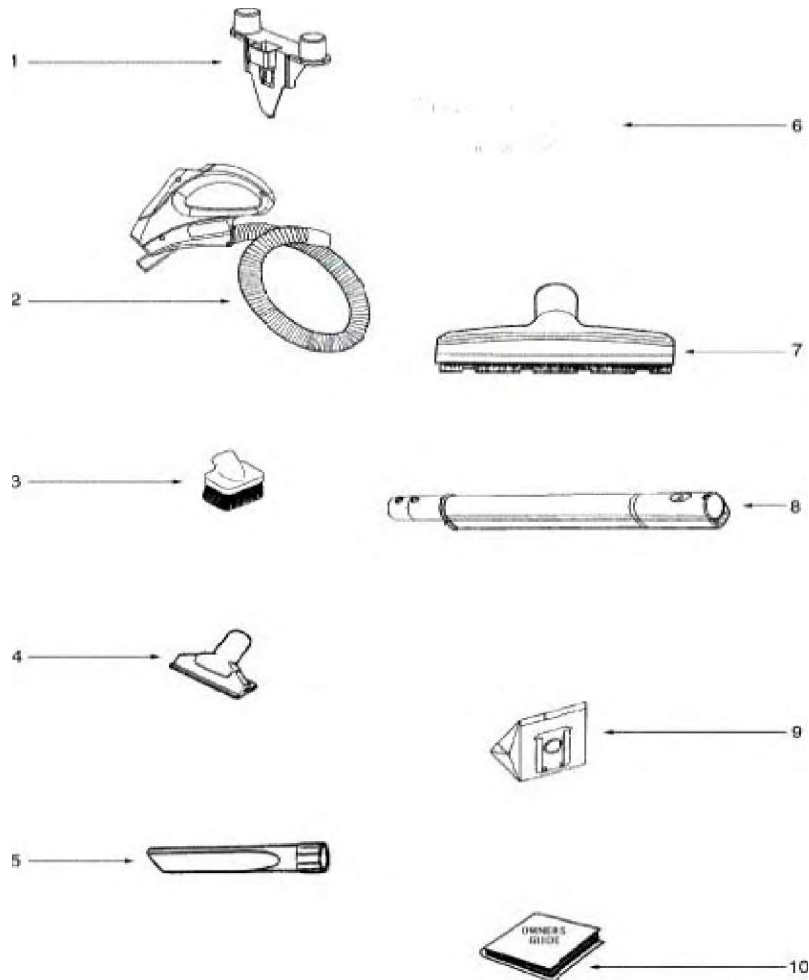
Ref #	Part	Description	Comments	Qty
1	1130602-40	FILTER LID & GRAPHICS ASS		
2	1130617-01	ABSORBENT - FILTER LID		
3	EL012W	WASHABLE HEPA FILTER		
4	2192645-02	GASKET - FILTER		
5	1130274-05	POWER OUTLET COMPLETE		
6	1050823-35	PEDAL - ON/OFF		
7	1050892-20	PEDAL - CORD WINDER		
8	61403	SPRING - PKGD		
9	62109-2	ELECTROLUX SCREW PACKAGE		
10	61890	SEALING WASHER PACKAGE		
11	1131236-02	ADAPTER MOTOR		
12	1050808-01	SUPPORT - MOTOR		
13	63160	MOTOR ASSY - PACKAGED		
14	1050868-01	ABSORBENT - MOTOR HOUSING		
15	1050889-03	HOUSING - MOTOR		
16	1050869-02	ABSORBENT - MOTOR HOUSING		
17	1131237-02	SEAL MOTOR FRONT		
18	2198341-02	CORDWINDER CPL.		
19	2192497-04	WIRE PCB/MOT S/TCO 18AWG		
20	1130608-08	REAR WHEEL		
21	1130614-03	REAR WHEEL COVER		
22	1130205-07	FRONT WHEEL ASSY		
23a	1130616-01	HANDLE		
23b	1130613-13	BUMPER - HANDLE		
24	1130609-04	CAP - HANDLE		
25	1050888-62	DISPLAY		
26	1128898-01	PCB ASSEMBLY		
27	117250-06	HOSE - COOLING		
28	1130249-01	SEAL - PCB SMALL		
29	1128898-51	PCB ASSEMBLY		
30	61409	SHAFT -PKGD		
31	1130340-04	COVER - FRONT INNER		
32	1130247-15	WIRE		
33	1130250-05	COVER - MOTOR		
34	1130272-02	HOLDER - MOTOR FILTER		
35	1130535-01	FILTER - MOTOR		
36	117979-05	SEAL - LID		
37	1050803-03	MODULE - DUST BAG		
38	61415	FLAP SPRING (NLA)		
39	1050819-02	LOCK - LID		
40	1050873-02	TUBE - CORDWINDER COOLING		
41	1130620-12	BOTTOM PART WITH WHEELS		
42	62109-1	ELECTROLUX SCREW PACKAGE		
43	1050812-01	BUSHING - HANDLE		
44	61418	LOCK -PKGD		

Powerhead - EL10A - EL6988E



Ref #	Part	Description	Comments	Qty
1	NUE-017-5	HOOD ASSEMBLY (ELECTROLUX		
2	63399-1	SCREW PACKAGE		
3	NUE-149-119N	PCB FIX BRACKET		
4	78188-1	HGT ADJ PEDAL & GRAPHICS		
5	78190-1	HANDLE RELEASE & GRAPHICS		
6	NUE-012A	UNIT MAIN PCB ASSEMBLY		
7	NUE-206	INSERT - PEDAL		
8	NUE-408	T-JOINT SEALING FELT		
9	NUE-208	SPRING FOR PIVOT ARM		
10	NUE-014-2	REAR WHEEL ASSEMBLY		
11	54432-2	PACKAGE - RETAINING RING		
12	16099-2	BASE ASSEMBLY - CARTONED		
13	NUE-010	HEADLIGHT PCB ASSEMBLY		
14	NUE-150-392P	LED FIX COVER		
15	NUE-004	FRONT AXLE ASSEMBLY		
16	NUE-407	FILTER WASHER - LOWER		
17	61699-3			
18	NUE-401	POLY V5 BELT		
19	NUE-131-453N	SOLE PLATE		
20	63399-2	SCREW PACKAGE		
21	NUE-007	ACTUATOR ASSEMBLY		
22	NUE-011	HEIGHT INDICATOR ASSEMBLY		
23	63399-3	SCREW PACKAGE		
24	NUE-013	OVERLOAD INDICATOR PCB AS		
25	NUE-411	FOAM PAD		
26	NUE-219	SPRING PLATE		
27	NUE-103-119N	AIR CHANNEL COVER		
28	NUE-107-119N	MOTOR COVER		
29	NUE-413	VENT FOAM FOR MOTOR		
30	NUE-006	MOTOR ASSEMBLY		
31A	NUE-003A-1	COUPLING ASSEMBLY		
31B	NUE-109-366N	C-CLAMP		
	EL10A			

Accessories - EL6988E



E

Ref #	Part	Description	Comments	Qty
1	76161-366N	CADDY - TOOL		
2	61977-5	POWERHEAD HOSE ASSEMBLY -		
3	75986	NOZZLE - DUSTING BRUSH		
4	75985	NOZZLE - FURNITURE		
5	76250	NOZZLE - CREVICE		
7	75973-1	FLOOR & WALL BRUSH ASSEMB		
8	75979A-1	TELESCOPIC WAND ASSY.		
9	EL200B	S BAG CLASSIC	Pkg of 5.	
10	81745	OWNERS GUIDE		
	15821	Dust Bage		
	SF119262-74	Dust Bag		
	15812	Dust Bag		
	045027-355N	Sumo Adapter		