

12VOLT

# John Deere FARM POWER

model number IGOR0050

Peg-Pérego

USE AND CARE **EN**

EMPLEYO Y MANUTENCION **ES**

UTILISATION ET ENTRETIEN **FR**

**NOTE:** Included rechargeable 12 volt battery located under hood.

**NOTA:** Batería recargable incluida de 12 voltios situada debajo de la capó.

**NOTE:** Batterie rechargeable incluse de 12 volts située sous le capot.

See separate insert sheet for more information

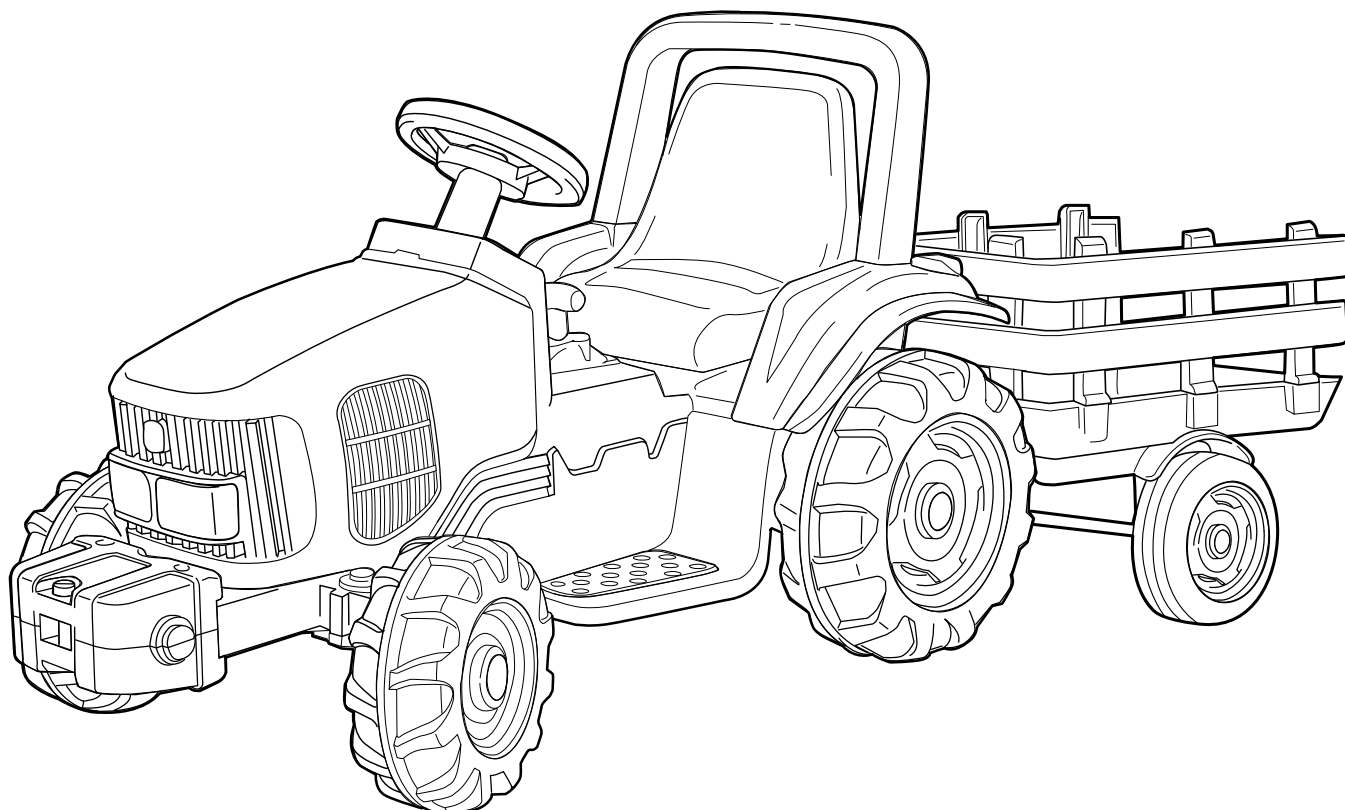
Vea la hoja separada del separador de millares para más información

Voir la feuille séparée d'insertion pour plus d'information



**2 YEARS\***

\*CONSUMER PARTICIPATION REQUIRED



**JOHN DEERE**  
LICENSED PRODUCT

FIUS1001G155



SEE VERBAL INSTRUCTIONS  
AFTER THE PICTURES

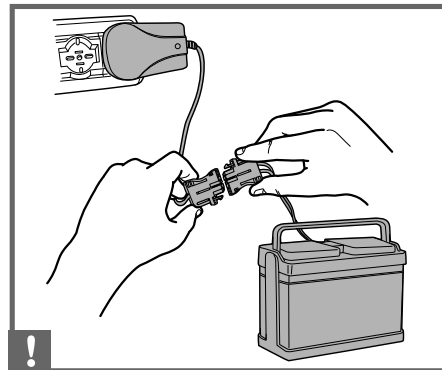
VER LAS INSTRUCCIONES  
DESPUÉS DE LOS DISEÑOS

VOIR LES INSTRUCTIONS APRÈS  
LES DESSINS

INITIAL BATTERY CHARGE

PRIMERA CARGA DE LA  
BATERÍA

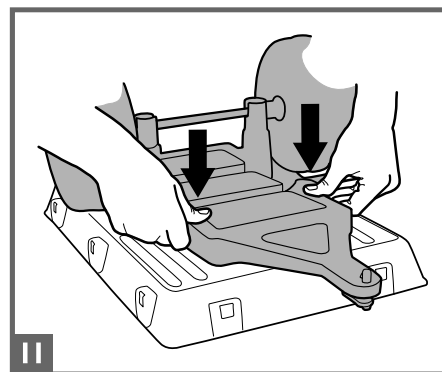
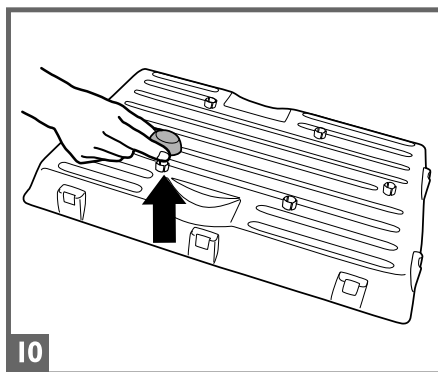
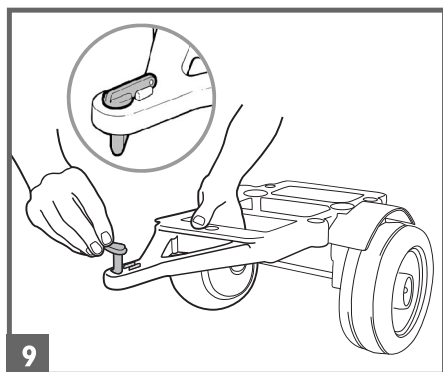
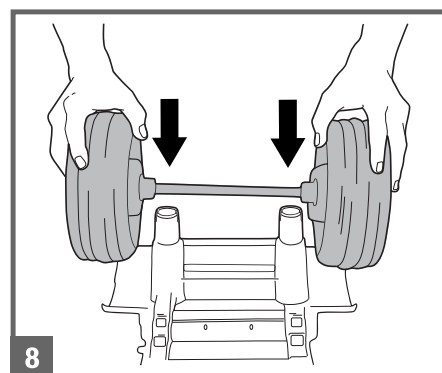
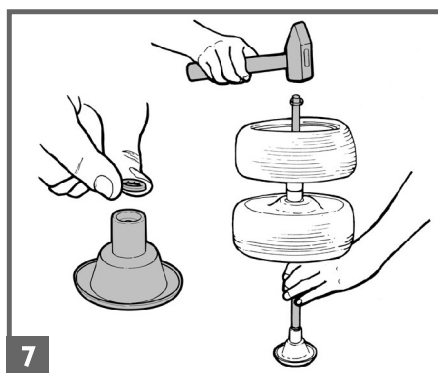
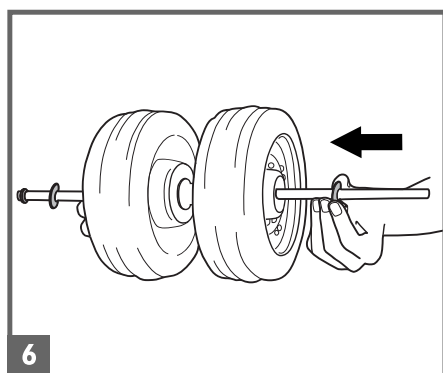
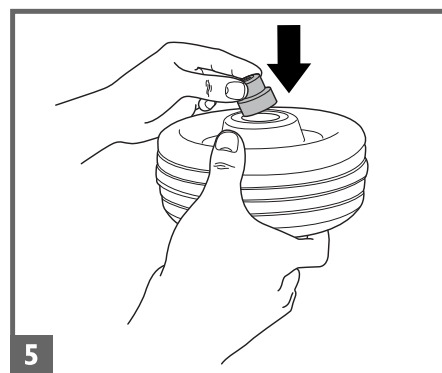
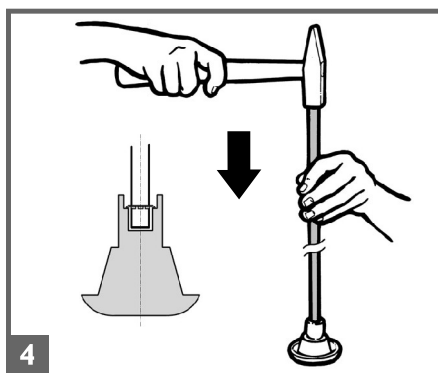
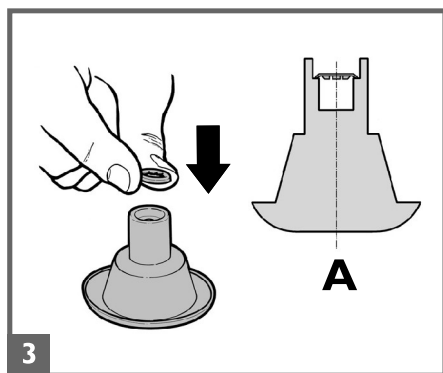
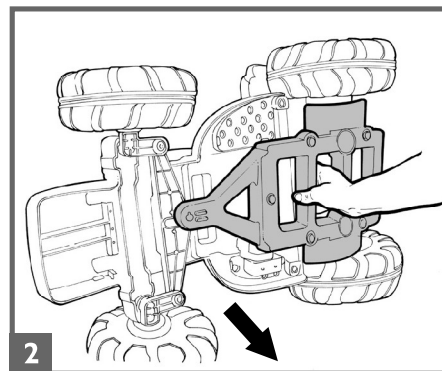
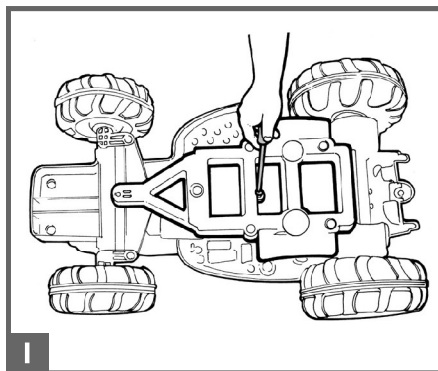
PREMIÈRE CHARGE DE  
BATTERIE

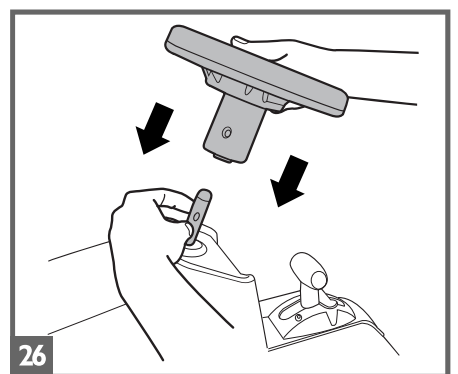
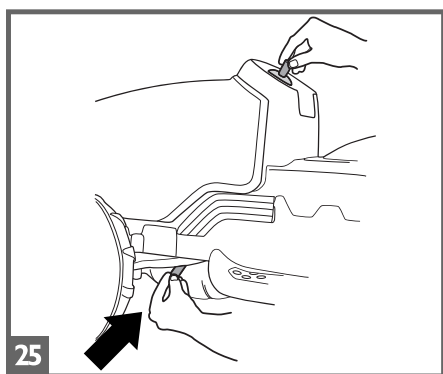
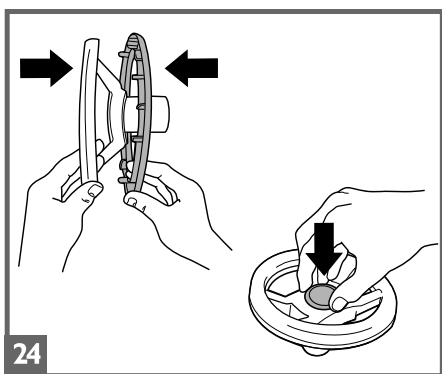
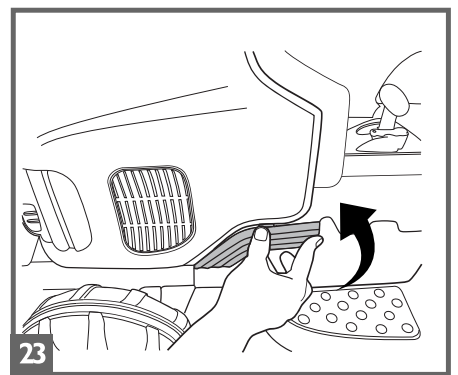
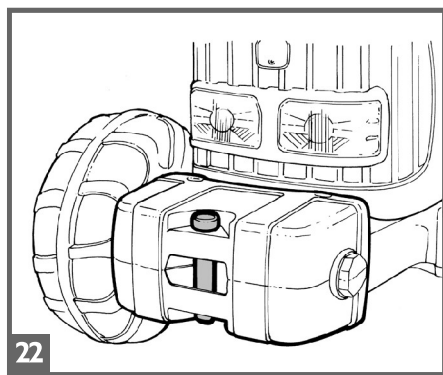
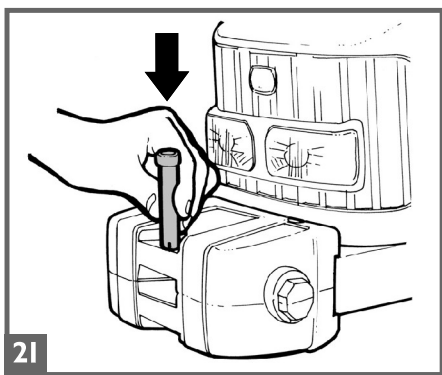
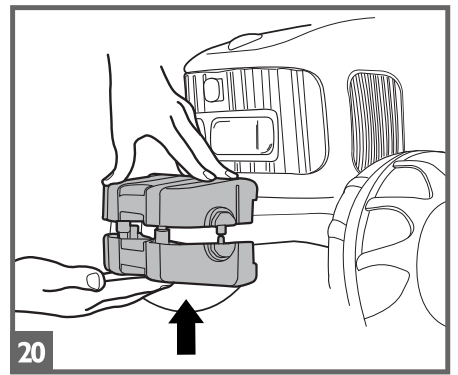
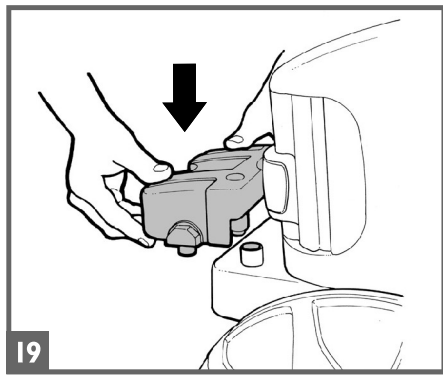
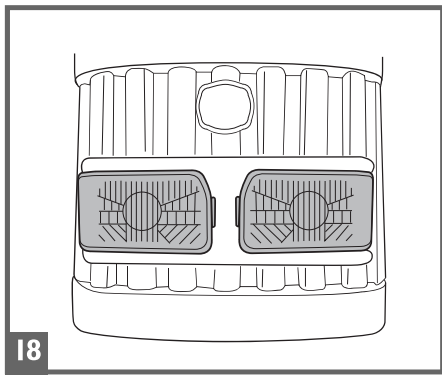
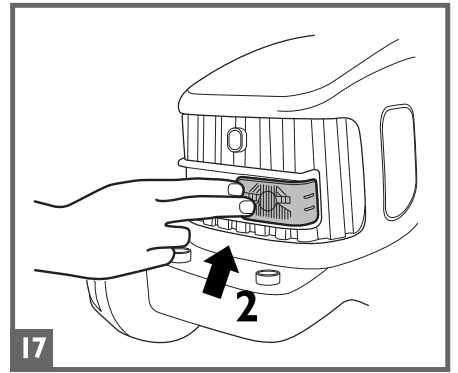
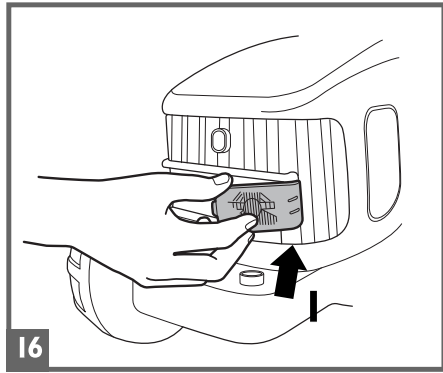
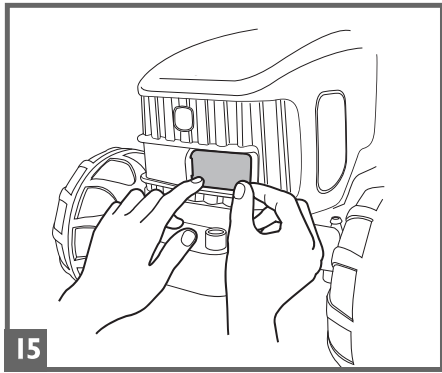
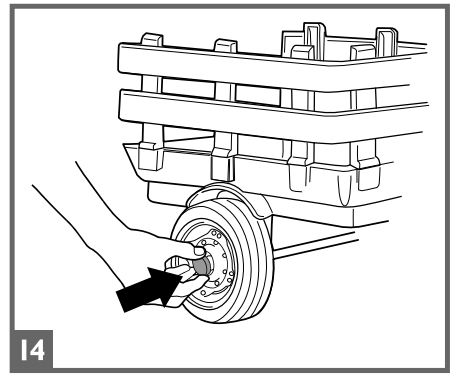
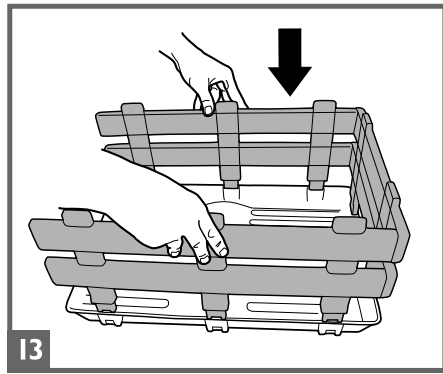
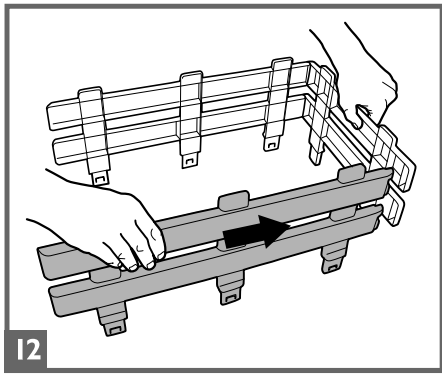


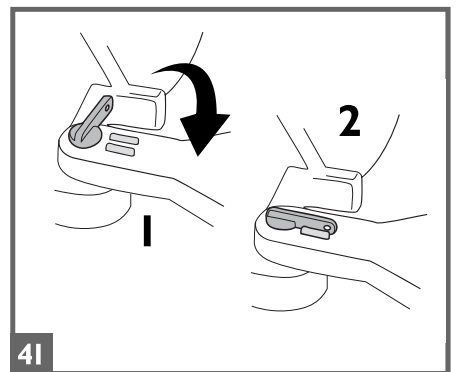
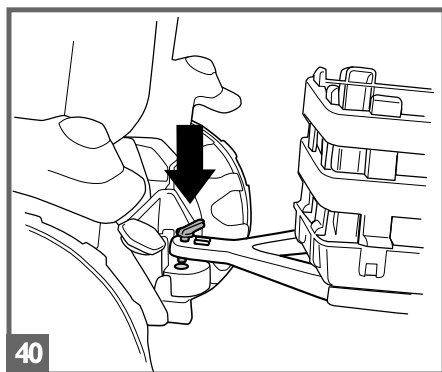
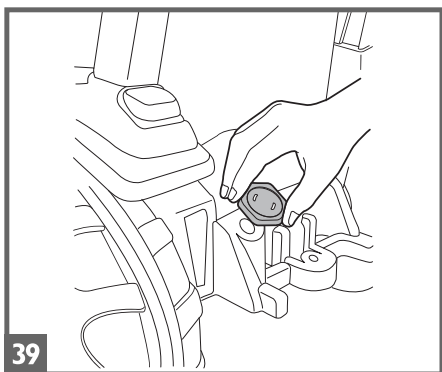
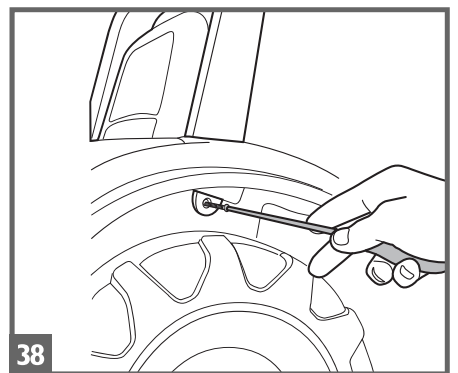
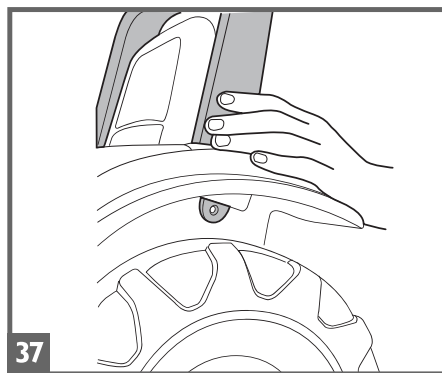
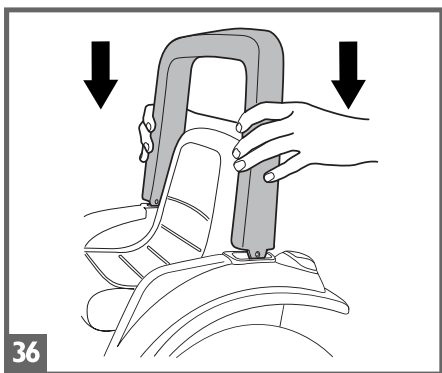
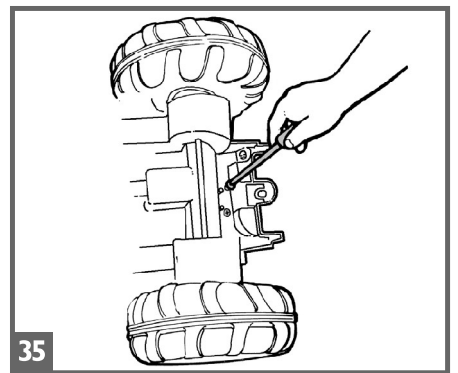
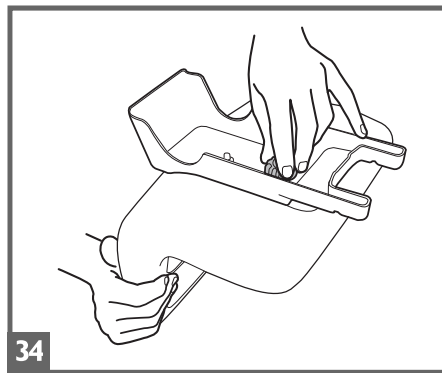
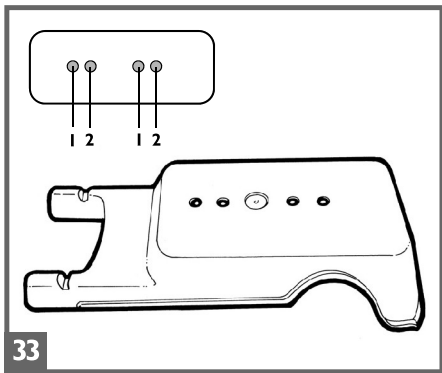
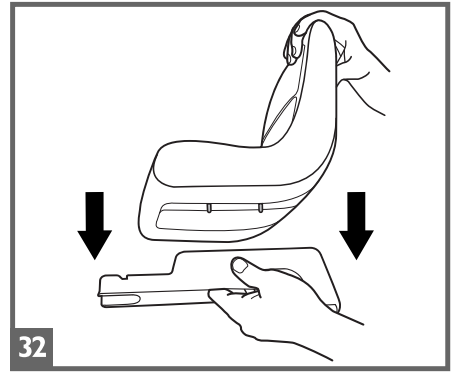
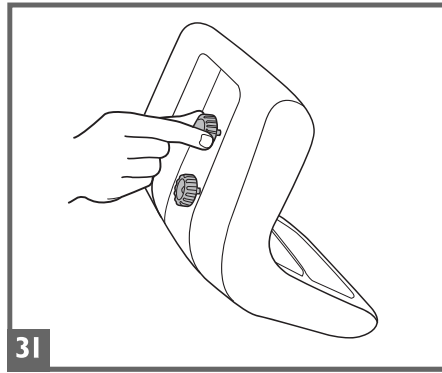
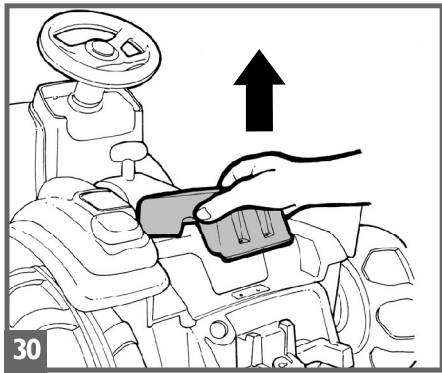
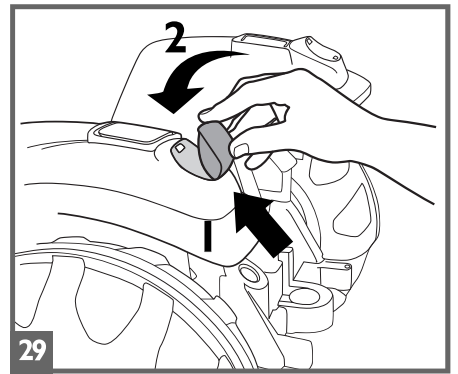
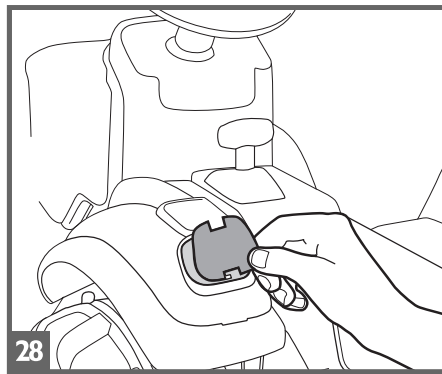
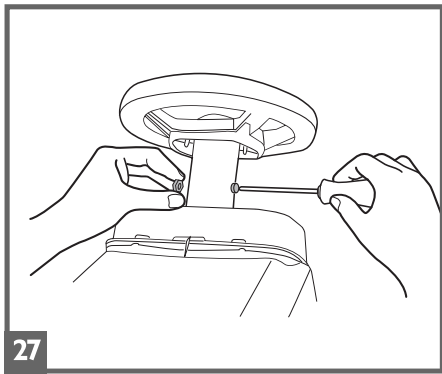
ASSEMBLY

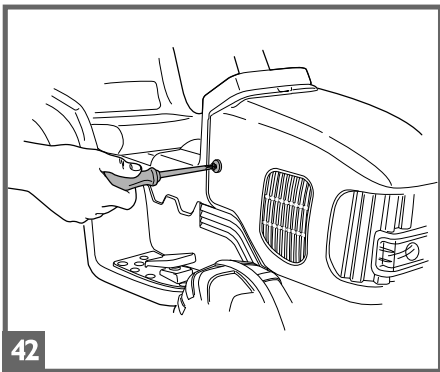
MONTAJE

MONTAGE

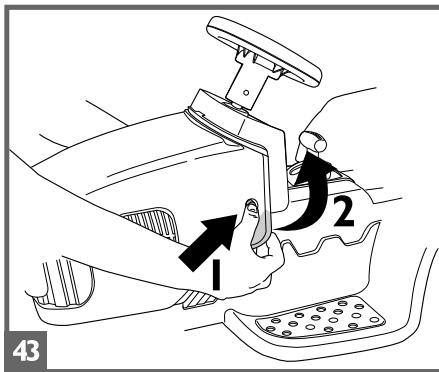




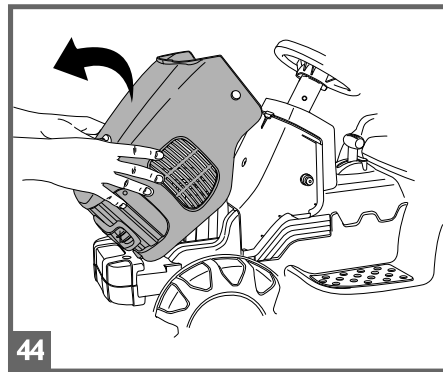




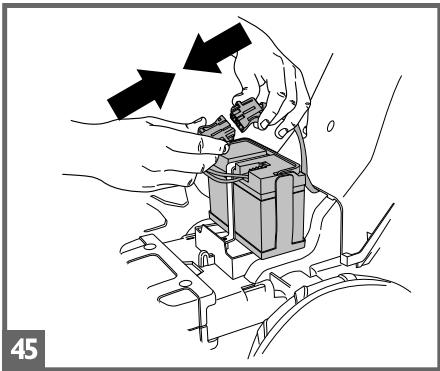
42



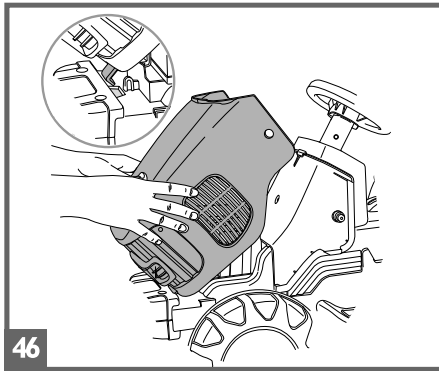
43



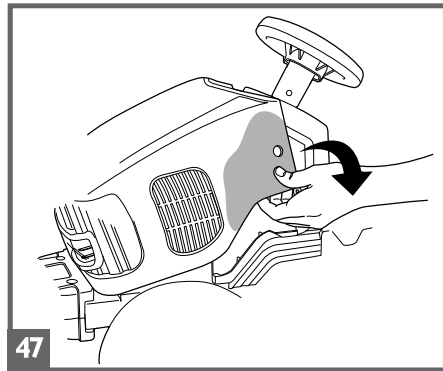
44



45



46

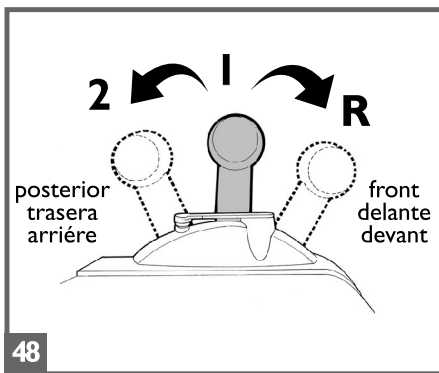


47

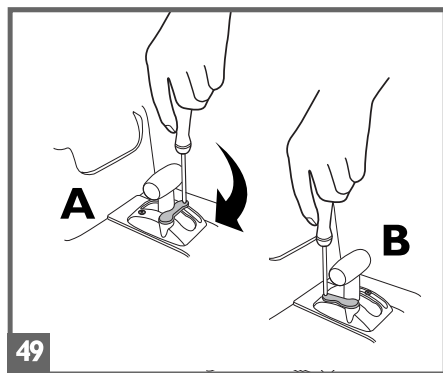
**VEHICLE FEATURES AND  
INSTRUCTIONS FOR USE**

**CARACTERÍSTICAS Y USO DEL  
VEHÍCULO**

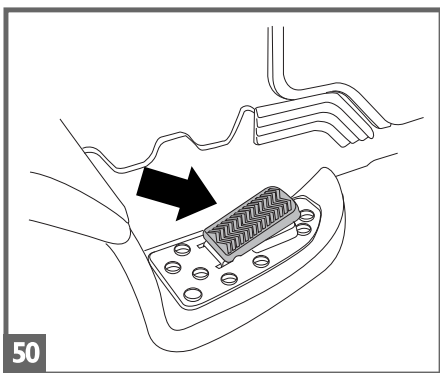
**CARACTÉRISTIQUES ET  
UTILISATION DU VEHICULE**



48



49

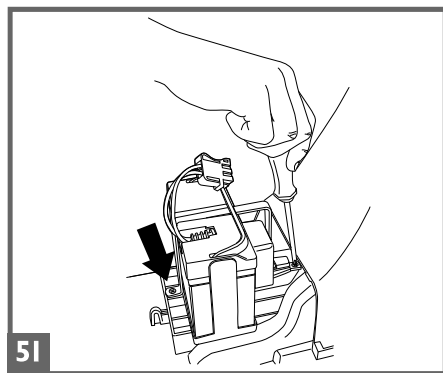


50

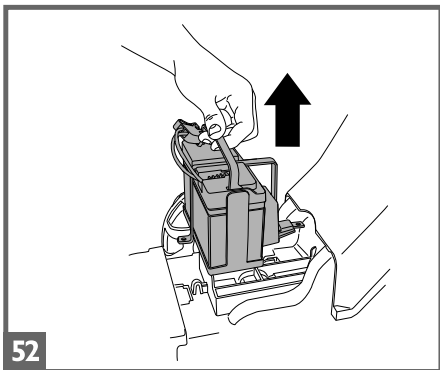
**BATTERY REPLACEMENT**

**CAMBIO DE LA BATERÍA**

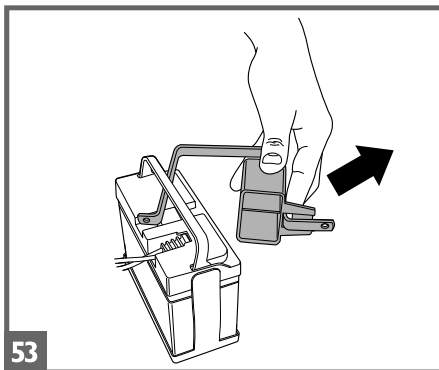
**REPLACEMENT DE LA BATTERIE**



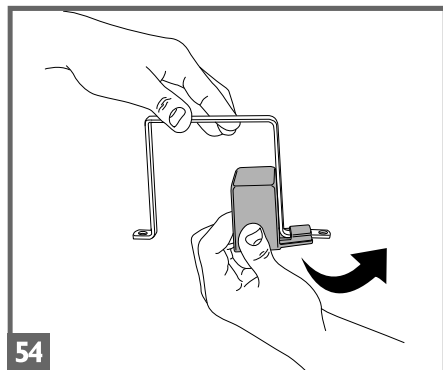
51



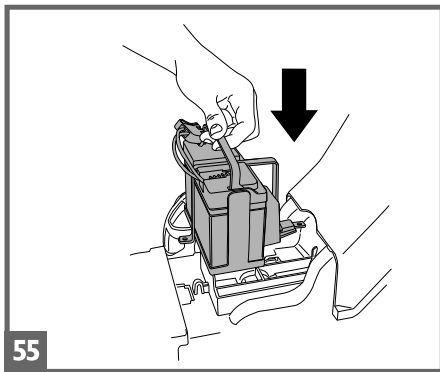
52



53



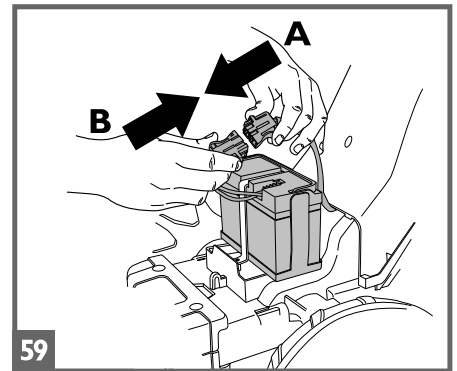
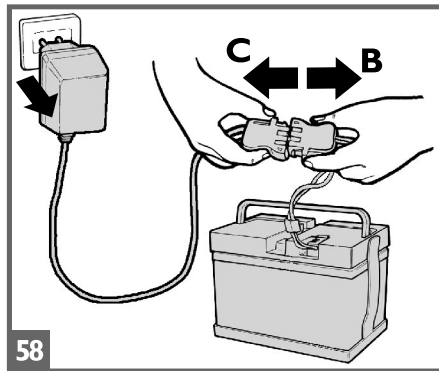
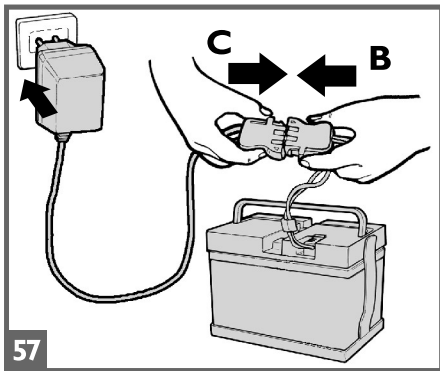
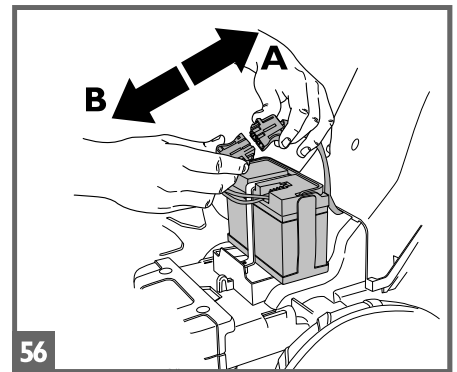
54



**BATTERY RECHARGE**

**CARGA DE LA BATERÍA**

**CHARGE DE LA BATTERIE**



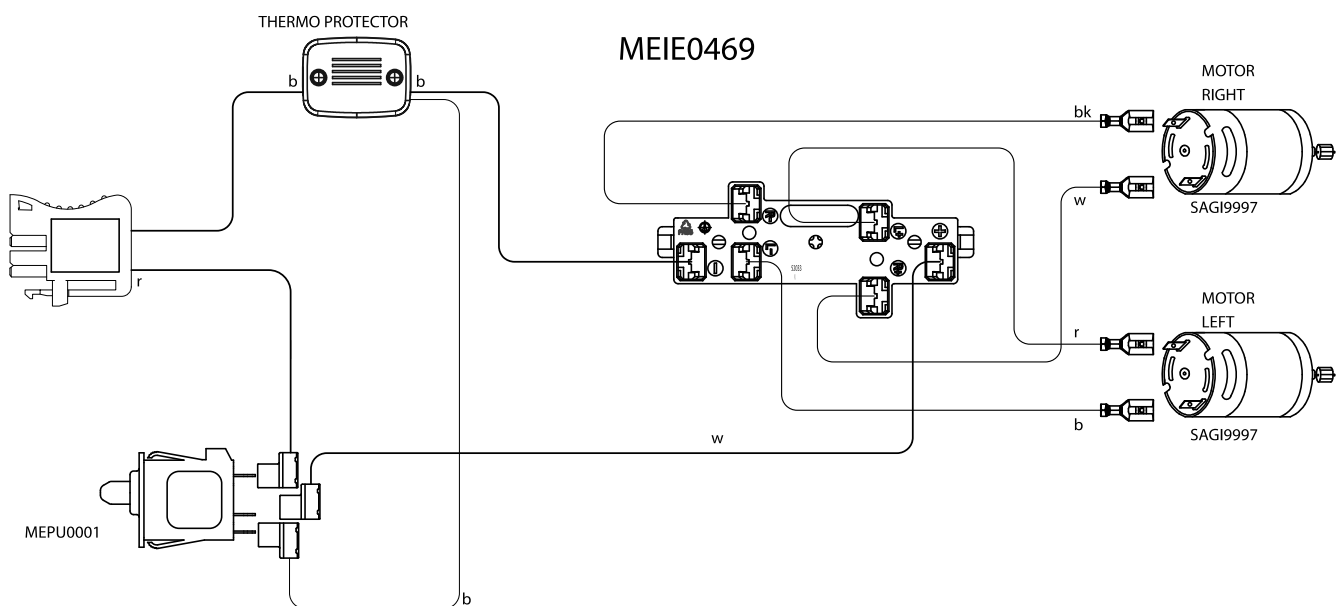
ELECTRICAL DIAGRAM

DIAGRAMA ELÉCTRICO

DIAGRAMME ÉLECTRIQUE

J.D. FARM POWER

IGOR0050



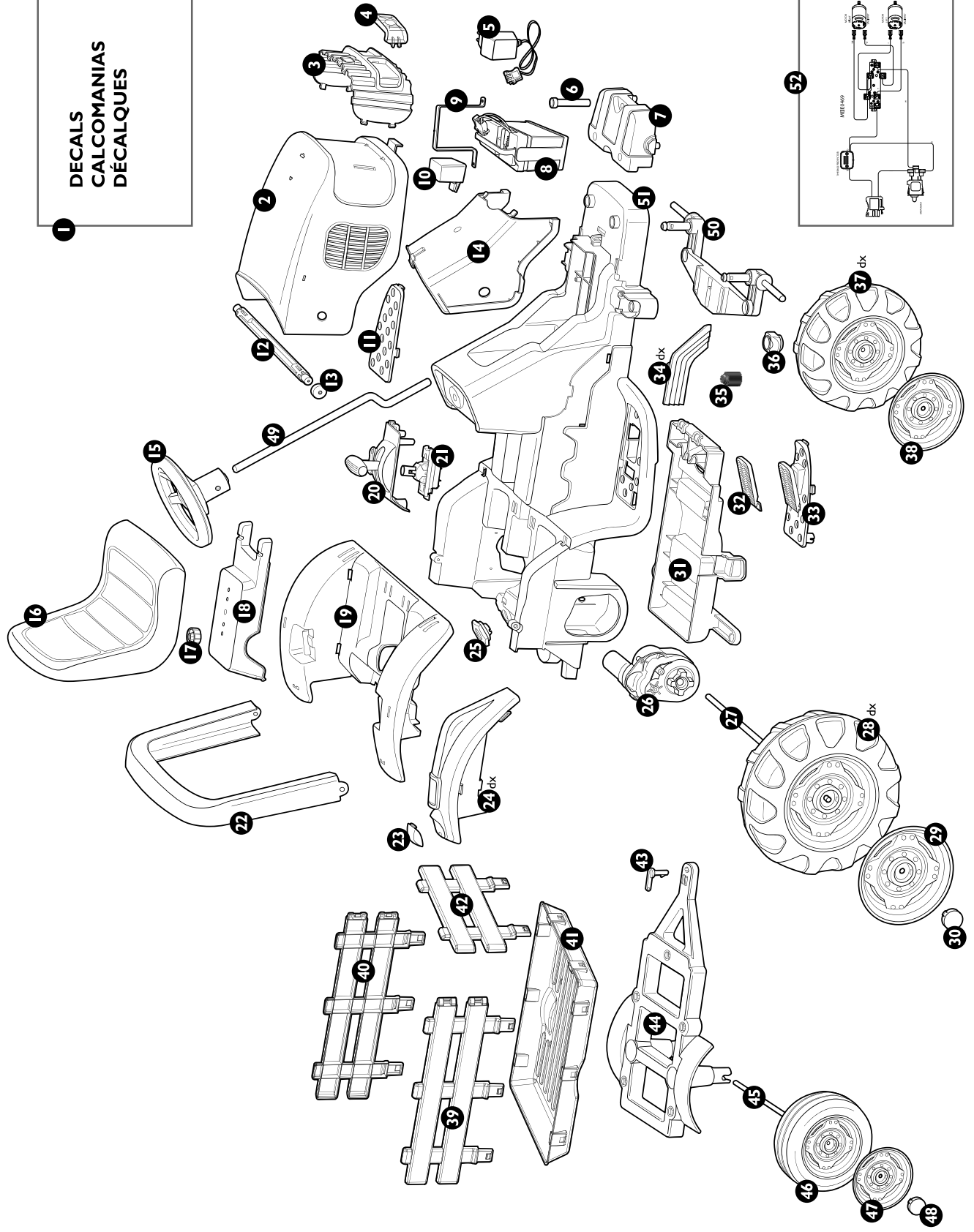
**b** = blue  
**bk** = black  
**r** = red  
**w** = white

**b** = azul  
**bk** = negro  
**r** = rojo  
**w** = blanco

**b** = bleu  
**bk** = noir  
**r** = rouge  
**w** = blanc



DECALS  
CALCOMANIAS  
DÉCALQUES



PEG PEREGO® thanks you for choosing this product. For more than 60 years, PEG PEREGO have been taking children for an outing: first with its famous baby carriages and strollers, later with its pedal and battery operated toy vehicles.

Discover our complete range of products, news and other information about the Peg Perego world on our web site [www.pegperego.com](http://www.pegperego.com)

## IMPORTANT INFORMATION

- Read this instruction manual carefully to learn the use of the vehicle and to teach your child safe and enjoyable driving. Please keep this manual (with your original sales receipt) for use as a reference in the future.
- **DO NOT RETURN YOUR VEHICLE TO THE STORE. This product cannot be returned for a refund after it has been used. If you have ANY questions, need replacement parts or need assistance, call us toll-free; U.S.A. , call 1-800-728-2108 / CANADA, call 1-800-661-5050**
- This product meets and/or exceeds all ASTM (American Society for Testing and Materials) TOY SAFETY STANDARDS, including F 963, Consumer Toy Safety Specifications as well as C.R.C, c.931, the Canadian Hazardous Products (Toys) Regulations.
- Tools needed for assembly: medium phillips screwdriver and a hammer.
- Your new vehicle is partially pre-assembled. It will require adult assembly. Please set aside at 45 minutes for assembly.
- Before the vehicle is used for the first time, charge the battery for 18 hours to initiate it. Failure to do this can result in permanent battery damage.
- Use only with the included Peg Perego 12 Volt lead-acid, rechargeable battery and a Peg Perego 12 Volt Charger (both included).

### • Year 3+

### • Weight capacity 85 lbs

- Do not exceed the maximum total weight capacity of 85 lbs (38,6 Kg).

#### Contents:

- 1 FARM POWER riding vehicle -- partially assembled
- 1 Rechargeable 12V 8Ah sealed lead-acid battery
- 1 Charger 12V
- two 140 W motors -- pre installed
- assembly hardware
- parts to be assembled
- decals

- Speed in 1st gear 2¼ MPH - 3,6 Km/h
- Speed in 2nd gear 4½ MPH - 7,3 Km/h
- Speed in reverse gear 2¼ MPH - 3,6 Km/h

- On vehicles that have forward & reverse; please teach your child to stop the vehicle before switching directions to prevent damage to the drive mechanism. Not applicable on 2 wheeled vehicles.
- Peg Perego reserves the right to modify or change its products. Price, literature, manufacturing processes or locations or any combination of the above mentioned entities may change at any time for any reason without notice with impunity.

## ⚠ CAUTION:

ELECTRIC VEHICLE NOT RECOMMENDED FOR CHILDREN UNDER 3 YEARS OF AGE. AS WITH ALL ELECTRIC PRODUCTS, PRECAUTIONS SHOULD BE OBSERVED DURING HANDLING AND USE TO PREVENT ELECTRIC SHOCK. RECHARGER INCLUDED. 120 VOLTS, 60Hz, 30W INPUT, 12 VOLTS (DC) OUTPUT.



### ⚠ CAUTION:

Only adults should recharge batteries never children.

Never allow children to handle batteries.

Only use the batteries specified by the manufacturer. Only use the charger specified by the manufacturer.

Do not mix old and new batteries.

Do not mix alkaline, standard (carbon-zinc), or rechargeable (nickel-cadmium) batteries.

#### CHARGING THE BATTERY

- Charge the batteries no longer than 24 hours, following the instructions enclosed with the battery charger.
- Charge the battery, as the vehicle shows low power, in this way you will avoid damage to the battery.
- If you don't use your vehicle for a long period of time unplug the battery from the main wire harness of the vehicle. Remember to charge the battery at least every three months.
- Never charge the battery upside down.
- Do not forget batteries during charging! Check them periodically.
- Never use a replacement recharger or batteries unless they are approved by PEG PEREGO.
- Batteries are sealed and maintenance free.
- Battery polarity must be observed when connecting battery to wiring.

### ⚠ WARNING:

• BATTERIES CONTAIN TOXIC AND CORROSIVE SUBSTANCES. DO NOT TAMPER WITH THEM.

• Batteries contain an acid-based electrolyte.

• Do not make direct contact between battery terminals, as this can cause an explosion or fire.

• Charging produces explosive gases. Charge batteries in a well ventilated area away from sources of heat and flammable materials.

• Exhausted batteries are to be removed from the vehicle.

• Do not place the batteries near clothing to avoid damage.

#### IF A LEAK DEVELOPS

Shield your eyes. Avoid direct contact with the electrolyte, protect your hands.

Place battery in a plastic bag and follow directions listed below.

#### IF ELECTROLYTE COMES IN CONTACT WITH SKIN OR CLOTHING

Flush with cool water for at least 15 minutes.

See a physician at once.

#### IF ELECTROLYTE IS INJECTED

Give tap water, milk of magnesia or egg whites at once.

Do not induce vomiting.

See a physician at once.

#### DISPOSAL OF BATTERIES

Help protect the environment!

Do not throw used batteries in your regular, household trash.

Dispose of the old batteries in an approved dumping station; contact your local environmental protection agency office for further information.

Pb



## INITIAL BATTERY CHARGE

- !• Remove battery and charger from packaging. Connect battery charger to a 120vac wall recepticle. Connect battery charger to battery.

## ASSEMBLY INSTRUCTIONS

### CAUTION:

ADULT ASSEMBLY REQUIRED.

USE CARE WHEN UNPACKING AS COMPONENTS TO BE ASSEMBLED MAY POSE A SMALL PARTS/SHARP EDGE HAZARD. BATTERY ALREADY INSTALLED IN VEHICLE.

- 1-2 • Unscrew and remove the bottom of the trailer from the bottom of the tractor.
  - 3 • Insert one of the 4 self-locking washers (the tractor comes with 2 spare washers) into the special tool provided with the tractor. ATTENTION: the tabs on the self-locking washer must be turned towards the interior of the tool (see detail A).
  - 4 • Remove the axle from the packing. Remove the protective caps from the axle. Insert the axle by pounding the special tool all the way in using a hammer. Remove the tool.
  - 5 • Insert white bushing into each trailer wheel as shown.
  - 6 • Slip the following components onto the axle in this order: washer, wheel, second wheel, washer (four washers come with the tractor; two of them are spares). ATTENTION: Check to make sure that the wheels have been inserted correctly on the axle. The hubcaps must be turned outwards.
  - 7 • Place a self-locking washer in the special tool, and insert the prepared axle, pounding it all the way in.
  - 8 • Attach the wheel unit to the base of the trailer by pressing on it.
  - 9 • Insert the red pin into the end of the trailer.
  - 10 • Remove the 5 protective caps from the bottom of the bed.
  - 11 • Attach the bottom of the trailer (prepared beforehand) to the bed by pressing, as shown in the figure.
  - 12 • Assemble the 3 sides of the trailer, ensuring that the parts with the wooden effect are facing outwards.
  - 13 • Fit the assembled parts into the slots in the base of the trailer.
  - 14 • Attach the 2 small hubcaps to the wheels on the trailer (Attention, in the packaging you will find 6 small hubcaps; the remaining 4 are to be attached to the wheels of the tractor).
  - 15 • Apply the Mylar reflective decals to the special areas on the front headlights.
  - 16 • Position the headlight lens by attaching the outer side.
  - 17 • Press as shown in the figure to snap the lens into place.
  - 18 • Repeat this step for the other front headlight.
  - 19 • Position one of the two parts of the counterweight on the front of the tractor.
  - 20 • Join the other part of the counterweight by pressing the two parts together.
  - 21 • Insert the pin into the special opening in the counterweight.
  - 22 • Push the pin all the way in.
  - 23 • Press the side inserts into place on the body.
  - 24 • Press the trim ring into place under the steering wheel place the cap on the top.
  - 25 • Push the steering column through the bottom of the tractor to the upper part of the body.
  - 26 • Hold the column in place and slip the steering wheel onto it.
  - 27 • Fasten the steering wheel with its screw and nut, being careful to insert the screw into the circular hole and to screw the nut onto the hexagonal part.
  - 28 • Apply the Mylar reflective decals to the special areas on the taillights as shown in the figure.
  - 29 • Attach the taillights by pressing from the bottom upwards.
  - 30 • Remove the seat support.
  - 31 • Unscrew the knobs on the bottom of the seat.
  - 32 • Line the seat up with the two holes on the seat support.
  - 33 • The seat can be adjusted to 2 positions to suit the height of the child (see figure).
  - 34 • After adjusting the seat, tighten the 2 knobs that hold it in place.
  - 35 • Reposition the seat support on the body of the tractor and tighten the 2 screws.
  - 36 • Position the roll bar (see figure).
  - 37 • Push the roll bar all the way in.
  - 38 • Tighten the 2 lock screws.
  - 39 • Press the gas tank cap into place on the back of the tractor.
  - 40 • Attach the trailer to the tractor as follows: insert the trailer coupling into the opening on the back of the tractor, and rotate it (see fig. 41).
  - 41 • Position 1: the trailer can be removed.  
Position 2: the trailer is locked into place. WARNING: The trailer will hold a load weighing up to 10 kg.
  - 42 • Loosen the two safety screws from the sides of the cab, and remove the two plastic disks (save the disks for putting the cab back on).
  - 43 • Press the two buttons and at the same time widen the cab to detach it, as shown in the figure.
  - 44 • Lift the cab off.
  - 45 • Connect the battery plug to the electrical system.
  - 46 • Reposition the cab by inserting the front hook into the opening on the bottom of the tractor (see detail).
  - 47 • Slightly widen the cab, and lower it to its original position. Replace the two plastic disks and fasten everything down with the screws.
- IMPORTANT NOTE: Charge the battery fully before using the first time.

## VEHICLE FEATURES AND INSTRUCTIONS FOR USE

- 48 • GEAR SHIFT LEVER. The vehicle has 2 speeds forward and 1 speed in reverse. ATTENTION: when the vehicle is taken out of the packing, it runs only in first gear and reverse gear. To use the second speed, follow the instructions in figure 49.
- 49 • Loosen the lock screw for the second speed (fig. A). Turn the lock screw to the next notch (fig. B), and tighten it. All of the gears are now ready for use.
- 50 • ACCELERATOR PEDAL/ELECTRIC BRAKE. When the foot is lifted from the accelerator pedal, the electric brake automatically stops the tractor.

## BATTERY REPLACEMENT

### WARNING:

WARNING: BATTERY CHARGING AND ANY OTHER OPERATION ON THE ELECTRICAL SYSTEM MUST BE CARRIED OUT BY ADULTS ONLY.  
THE BATTERY CAN ALSO BE CHARGED WITHOUT REMOVING IT FROM THE VEHICLE.

- 51 • Unscrew the two safety screws from the cab. Remove the cab. Disconnect the battery from the electrical system and loosen the 2 screws on the battery brace, as shown in the figure.
- 52 • Extract the battery.
- 53 • Remove the battery clamp from the discharged battery and put it on the new battery.
- 54 • If you have bought or own a Peg Perego 12V/12Ah battery, you will have to remove the plastic filler (A) by slipping it off the battery clamp.
- 55 • Reposition the new battery with the battery clamp in its housing. Fasten the clamp with the two screws. Connect the battery plugs to the electrical system.  
Reposition the cab. Attention: always screw the two safety screws back onto the sides of the cab.

## BATTERY RECHARGER

- 56 • Open the hood, as described above. Disconnect the battery from the electrical system by pressing on the side of the plug.
- 57 • Insert the battery charger plug into an electrical outlet, following the instructions that come with the charger. Connect point B to point C on the battery charger.
- 58 • When the battery has been completely recharged, disconnect the battery charger from the electrical outlet, and disconnect point C from point B.
- 59 • Insert point B into point A, pressing until it clicks into place. Replace the battery brace. Always remember to close and fasten the cover on the battery compartment when you have finished working on the battery.

## RULES FOR SAFETY DRIVING

**DON'T STOP THE FUN:** purchase a spare battery to have a freshly charged back-up available.  
For your child's safety: please read and follow all instructions below before operating.

- **ATTENTION:**

- Check the fastening retainers to be sure they are tight.

- **1ST SPEED** slow speed (beginner drivers):

- With both hands on the steering wheel, press down on the accelerator pedal; the vehicle goes forward at 2¼ MPH.

- **2ND SPEED** fast speed (experienced drivers):

- With both hands on the steering wheel, press down on the accelerator pedal; the vehicle goes forward at 4½ MPH.

- **REVERSE:**

- Place the left hand on the steering wheel. With the right hand holding the gearshift in reverse, press your foot down on the accelerator; the vehicle reverses at 2¼ MPH. (Reverse is spring-loaded for safety).

- **BRAKE:**

- The electric braking system stops the vehicle automatically when your child lifts his foot off the pedal.

Teach your child the proper use of this vehicle for a safe and fun play time.

- Before starting be sure that the area is free from people and objects.
- Drive with both hands on the steering wheel and keep your eyes on the road at all times.
- Please teach your child to stop in time to avoid running into objects or people and to immediately remove their foot from the accelerator pedal if they do run into an object or person.

## ⚠ CAUTION:

- **If the vehicle is overloaded, as can happen on soft sand, mud, or very uneven ground, the overload switch will immediately disconnect the power. The power supply will be restored after a few seconds.**

## VEHICLE MAINTENANCE AND SAFETY

This product meets and/or exceeds all ASTM (American Society for Testing and Materials) TOY SAFETY STANDARDS, including F 963, Consumer Toy Safety Specification.

This vehicle is not intended for use on streets, around traffic or parked cars.

### MAINTENANCE AND CARE

- Regularly check the conditions of the vehicle, particularly the electrical system, the plug connections, the covering caps and the charger. In case of fault, do not try to use the vehicle and the charger. For repair use only original PEG PEREGO's spare parts.
- PEG PEREGO assumes no liability if the electrical system is tampered with.
- Do not leave vehicle or batteries near sources of heat such as radiators, stoves, fireplaces, etc.
- Protect vehicle from water, rain, snow, etc.
- When operating in overload conditions, such as soft deep sand, mud or rough uneven terrain, the overload circuit breaker will automatically disconnect the power. After 10 or more seconds, the circuit breaker will automatically reset, however you must eliminate overload conditions to resume normal driving.
- Periodically lubricate (with a light weight oil) moving parts, such as wheel bearings, steering linkages, where they rotate or touch one another.
- The vehicle's surfaces can be cleaned with a damp cloth. Do not use abrasive cleaners. The cleaning must be carried out by adults only.
- Never disassemble the vehicle mechanisms or motor unless authorized by PEG PEREGO.

### SAFETY

## ⚠ WARNING:

- To reduce the risk of injury, adult supervision is required. Never use in roadways, near motor vehicles, on or near steep inclines or steps, swimming pools or other bodies of water; always wear shoes, and never allow more than one rider.
- Surfaces that are appropriate for use: grass, dirt or hard surfaces with slopes not to exceed 10%.
- A child must be 3 years of age or older for the necessary coordination and maturation to operate this motorized vehicle safely.
- Never use the vehicle on steep slopes or near steps or stairs. This vehicle is not suitable for use on public highways.
- Children should always wear shoes when riding in or driving a riding vehicle.
- The use of a certified bicycle helmet is strongly recommended.
- Do not allow children to place their hands, feet or any part of their body, clothing or other articles near the moving parts while vehicle is in operation.
- Do not allow the electrical components, motors, wiring, switches of your motorized vehicle to become wet and never wash it with a hose.

- Never use gasoline or other flammable substances near the vehicle.
- The vehicle is designed just for one child: never allow more than one rider

#### PROBLEMS?

IF THE VEHICLE DOES NOT OPERATE?

- **When operating in overload conditions, such as running the vehicle against a fixed object, through soft deep sand or mud, or over rough or uneven terrain, the overload circuit breaker will automatically disconnect the power. After 10 or more seconds, the circuit breaker will automatically reset, however you must eliminate overload conditions to resume normal driving.**
- Check that all electrical connectors are properly connected.
- Check electrical switches. Replace if necessary.
- Check that the battery is connected to the electrical system.

IF THERE IS NO POWER?

- Fully recharge the battery. If the problem persists, check with an Authorized PEG PEREGO Service Center.

#### CUSTOMER SERVICE

For your convenience, PEG PEREGO offers after-sales service, directly or through a network of authorized service centers for repairs or replacement parts.

If you have any questions about your Peg Perego vehicle, please call our toll-free service lines at;

**U.S.A , call 1-800-728-2108**

**CANADA, call 1-800-661-5050**

Trained customer service representatives are available to take your call in English or Spanish.

This document was created with Win2PDF available at <http://www.win2pdf.com>.  
The unregistered version of Win2PDF is for evaluation or non-commercial use only.  
This page will not be added after purchasing Win2PDF.