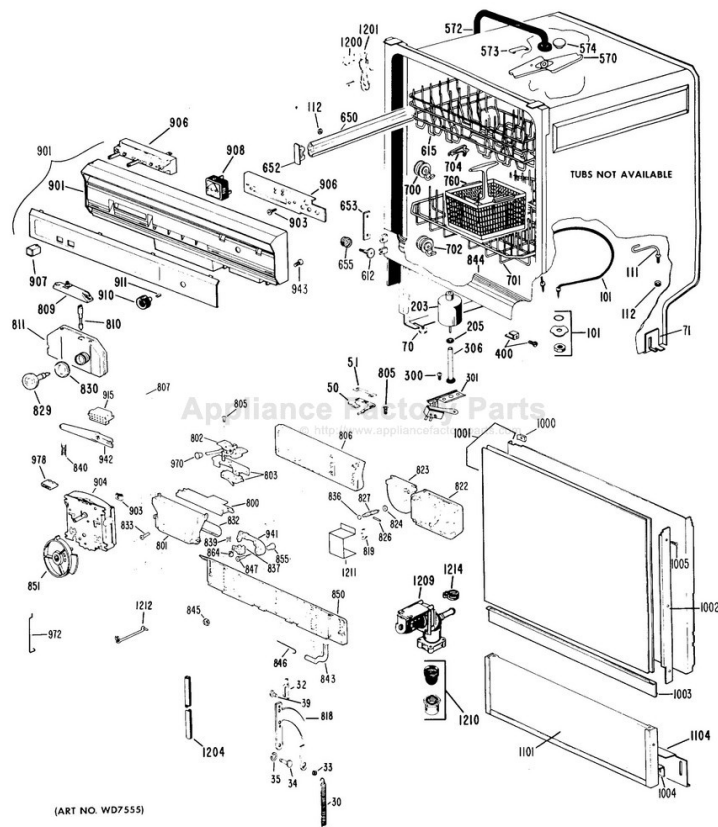


This Owner's Manual is provided and hosted by [Appliance Factory Parts](http://Appliance Factory Parts).



# GE GSD454W-55 Owner's Manual

[Shop genuine replacement parts for GE GSD454W-55](#)



[Find Your GE Dishwasher Parts - Select From 6722 Models](#)

----- Manual continues below -----



**Potscrubber®  
Built-In Dishwasher  
Model GSD454W  
OPERATING INSTRUCTIONS**

**SAVE THESE INSTRUCTIONS  
WITH YOUR USE AND CARE BOOK**

**Before operating your dishwasher,  
READ YOUR USE AND CARE BOOK.  
It contains valuable information about  
loading, detergents, dispensers, wash-  
ing special items and IMPORTANT  
CAUTIONS FOR THE PERSONAL SAFETY  
OF THOSE USING THIS APPLIANCE.**

### Special Features

- ★ **POTSCRUBBER® DISHWASHER**  
The Power Scrub® Cycle, combined with the Potscrubber Dishwasher's high performance wash system, may not do everything (such as remove burned-on soils), but will remove dried-on and baked-on soils from pots, pans and casseroles.
- ★ **3-PUSHBUTTONS—**  
Power Scrub®, Normal Soil and Energy Saver Dry.
- ★ **PUSH-TO-START CONTROL DIAL**
- ★ **2-LEVEL WASH SYSTEM**  
Directs water action from the bottom and the middle to clean the dishes.
- ★ **SOUND INSULATED** for quiet operation.
- ★ **REVERSIBLE COLOR PANELS**  
supplied with the dishwasher let you change color quickly and easily.
- ★ **SOFT FOOD DISPOSER**  
Load dirty dishes without pre-rinsing . . . just tip off large or hard scraps. The soft food disposer pulverizes soft food scraps and flushes them away.
- ★ **TUFF-TUB® INTERIOR**  
A beautiful interior coated with vinyl and designed to protect the surface from the effects of chemicals and acids in detergents and foods. The door is epoxy-coated for an additional guard against accidental damage.

### Additional Quality Features

- ISOLATION MECHANISM MOUNTING
- DUAL DETERGENT DISPENSER
- CYCLE-INDICATOR CONTROL DIAL
- CUSHIONED, RANDOM-LOADING FULL-EXTENSION RACKS
- WASH-WATER TEMPERATURE MAINTENANCE
- CALROD® HEATING UNIT
- AUTOMATIC EXCESS WATER CONTROL
- FRAME ACCESSORY—FOR WOOD OR BLACK GLASS (OPTIONAL, EXTRA COST)
- REMOVABLE SILVERWARE BASKET

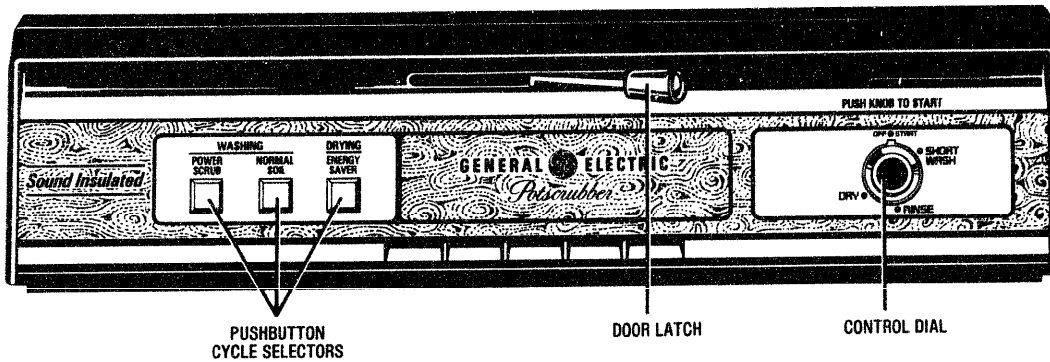


Samples of these dishwashers were investigated by the Good Housekeeping Institute and earned the Good Housekeeping Consumer's Guaranty Seal

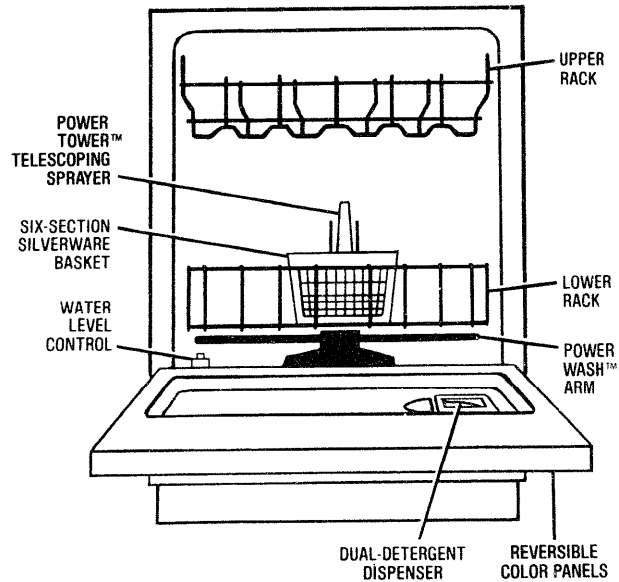
- **Dimensions:** Height 34 $\frac{1}{8}$ " (adjusts to 35 $\frac{1}{8}$ "),  
Width 24",  
Depth 25" including handle  
Door swings out 21 $\frac{3}{8}$ ".
- **Electrical Requirements:**  
Volts 115  
Amps 15 amp circuit breaker or regular fuse.  
Hertz 60
- Wire service with a separate ground wire is required. This appliance must be grounded for safe operation.

- **Total Cycle Time** (normal cycle): 69 minutes
- **Water consumption** (normal cycle): 11.4 gallons
- **Machine electrical energy** (normal cycle): 0.75 Kwh.
- **Tuff-Tub® vinyl-coated interior.**
- **Inlet water pressure required:** 15 to 120 lbs. per square inch.
- **Inlet water temperature recommended:** 140°F.
- **Underwriters' Laboratories, Inc. listed.**

49-5267



## Features of your new Potscrubber® dishwasher



### Before operating your dishwasher...

#### CHECK WATER TEMPERATURE

FOR BEST RESULTS, WATER TEMPERATURE SHOULD BE BETWEEN 140° AND 150° F.

Instructions for measuring water temperature are in your Use & Care Book.

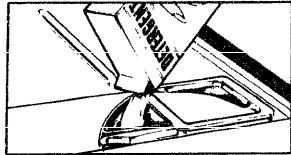
## To operate your dishwasher...

### 1 PREPARE YOUR TABLEWARE, POTS & PANS, AND LOAD DISHWASHER PROPERLY

See your Use & Care Book.

### 2 ADD DETERGENT

Proper detergents are very important to achieve good dishwashing results. Use only fresh detergents designed for automatic dishwashers. Review the detergent section of the Use and Care Book to become fully familiar with detergent loading procedure.



**Note:** Make sure control dial is set at OFF position before you add detergent.

### 3 SELECT THE CYCLE

**POWER SCRUB\*** cycle is designed to remove **DRIED-ON** and **BAKED-ON** soils. These soils will be removed from utensils that are in good condition if you follow loading and operating instructions carefully. It is especially important to load items with heavy, **DRIED-ON** or **BAKED-ON** soils such as pots, pans and casseroles, open end down in the lower rack facing directly toward the lower wash arm. In this position the items will receive the most vigorous wash action for maximum soil removal. As you would expect, severely **BURNED-ON** soils occasionally may not be completely removed, especially if the surface of the utensil is etched, pitted or otherwise in poor condition. After washing items of this type, any remaining soils should be removed by hand. Discoloration of utensils caused by overheating during cooking cannot be removed by the dishwasher.

**NORMAL SOIL** cycle is for most loads of everyday dishes, glasses and cookware with light to heavy soils.

### ● DRYING OPTIONS

• **HEATED DRYING**—When the **POWER SCRUB** or **NORMAL SOIL** buttons are pushed, the energy saver dry selection is automatically cancelled and the drying heater is energized to circulate heated air over the dishes during the drying period for fast drying.

• **ENERGY SAVER**—To save energy, push the **ENERGY SAVER** button *AFTER* either the **POWER SCRUB** or **NORMAL SOIL** button has been pushed. This disconnects the drying heater and allows the dishes to dry by their own heat over time. This option is best used when the dishes are washed at night and can stay in the dishwasher until the next morning. Natural drying time will be reduced if you prop open the dishwasher door about three inches at the top after the cycle is complete.

Use of this option reduces the electrical energy used by this model approximately 8%.

Estimated yearly savings, depending on your local electric rates, are as follows:

Electric Rate (per Kwh)	\$ .05	\$ .08	\$ .11
Estimated Yearly Savings	\$ 5.62	\$ 8.99	\$12.36

To cancel the **ENERGY SAVER** Selection, fully push either the **POWER SCRUB** or **NORMAL SOIL** button.

### 4 START YOUR DISHWASHER

If your dishwasher drains into a food waste disposer, run the disposer until it is completely empty before starting the dishwasher.

- To start the dishwasher, close the door and move the door latch to the right to the locked position. Then push the control dial in.
- For **SHORT WASH** cycle: Slowly rotate dial clockwise to **SHORT WASH** position on dial. Then push the control dial in. This option saves you time and hot water, and may be used when dishes are not heavily soiled.

### INTERRUPTING A CYCLE

Forget a dish?

1. Push door latch to the left. Door safety interlock switch will cut off the washing action.

2. Wait a few seconds for water action to subside, then open door.

3. Add dishes you may have forgotten... or remove items.

4. Close door and push latch to right. Cycle will automatically resume operation.

**NOTE:** Soiled dishes should not be added after the main detergent wash portion of the cycle.

Interrupt the wash and rinse periods as seldom as possible. Water temperature is reduced, decreasing washability, when door is opened on any dishwasher.

## What happens during the cycle...

- The dishwasher will complete the selected cycle sequence automatically and the control dial will advance to the OFF position.

CYCLE SEQUENCE (minutes—approx.)	Power Scrub	Normal Soil	Short Wash
Wash/Rinse	4	4	—
Rinse	6	6	—
Rinse	3	3	3
Main Detergent Wash	44	18	18
Rinse	4	4	4
Rinse	9	9	9
Electric Dry	25	25	25
<b>Total Time (approx.)</b>	<b>95</b>	<b>69</b>	<b>59</b>

\*This portion of the cycle is eliminated when ENERGY SAVER button is depressed.

- The vent cover closes shortly after you start the dishwasher. You may hear it close.
- Occasional clicking sounds that occur are caused by:
  - soft food disposer mechanism shredding action.
  - drain valve at start of pump out of wash and rinse water.
  - timer control as cycle progresses.
  - detergent cup when it opens in the main wash.
- The motor stops during the drying period.
- Water vapor is released through the vent under the door handle during drying cycle. It may be visible.

## Reversible color panels or special finishes

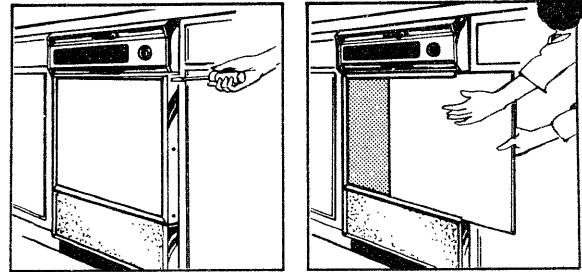
Your dishwasher comes with reversible and interchangeable door panel inserts.

Each side of each insert panel is finished in a different color.

The insert panels are held in place by the trim on the door.

### TO CHANGE COLOR INSERTS:

1. Take out three screws and remove the side trim from either side of the dishwasher door.
2. Slide the insert panels out simultaneously or bow them



out from under control panel at the top. Replace them with the color you want in front. Handle inserts carefully—edges may be sharp.

3. Replace the side trim.

Special finishes can be applied to the metal inserts to match your kitchen decor.

## BEFORE YOU CALL FOR SERVICE...

Check the TROUBLE-SHOOTING GUIDE in your USE AND CARE BOOK. It lists many minor causes of problems that you can correct and may save you an unnecessary service call.

GENERAL ELECTRIC COMPANY  
LOUISVILLE, KENTUCKY 40225



GENERAL  ELECTRIC

Pub. No. 49-5267

GSD454W

2-80

Part No. 218A3682P90