

This Owner's Manual is provided and hosted by [Appliance Factory Parts](#).



LG LMU540HV Owner's Manual

[Shop genuine replacement parts for LG LMU540HV](#)



[Find Your LG Air Conditioner Parts - Select From 2330 Models](#)

----- Manual continues below part list -----

Available Replacement Parts for LG LMU540HV

EBG61107014	Ntc Thermistor Assembly
EBG61107109	Ntc Thermistor Assembly
4681A20172Q	Motor Assembly,dc,indoo
EAF38718601	Time Delay Glass 250V 35A Fuse
5401187701	Inverter Pcb Assembly
EAD62115301	Assembly Drawing



Multi Air Conditioner

SVC MANUAL(Exploded View)

MODEL : A8UW54GFA0 [LMU540HV]

CAUTION

Before Servicing the unit, read the safety precautions in General SVC manual.
Only for authorized service personnel.

1. Specification

Model Name				A8UW54GFA0 [LMU540HV]
Capacity		Nominal	Btu/h Class	54,000
Capacity	Cooling	Min.~Rated~Max.	Btu/h	14,000 ~ 52,500 ~ 63,200
	Heating	Min.~Rated~Max.	Btu/h	15,467 ~ 58,000 ~ 64,000
Power Input	Cooling	Min.~Rated~Max.	kW	1.0 ~ 5.10 ~ 5.86
	Heating	Min.~Rated~Max.	kW	1.49 ~ 5.34 ~ 6.19
EER / COP			kBbu/h.W	10.3 / 3.2
SEER / SCOP			Non Ducted	18.4 / 8.7
			Mixed	17.1 / 8.7
			Ducted	15.8 / 8.7
Power Supply			V, Ø, Hz	208/230, 1, 60
Running Current	Cooling	Min.~Rated~Max.	A	4.6 ~ 23.7 ~ 27.2
	Heating	Min.~Rated~Max.	A	6.9 ~ 24.8 ~ 28.7
Starting Current	Cooling	Max.	A	-
	Heating	Max.	A	-
Wiring Connections	Power Supply Cable (included Earth)		No. x AWG	3C x 4.0
	Power and Communication Cable (included Earth)		Outdoor ~ BD unit	No. x AWG
Combination	Sum of Indoor Units Capacity		kBtu/h	73
	Number of Indoor Units		EA	8
	Number of BD Units		EA	2
Casing Color				Warm Gray
Dimensions		W x H x D	mm	950 x 1380 x 330
		W x H x D	inch	37.4 x 54.3 x 13.0
Net Weight			kg (lbs)	97(213.8)
Compressor	Type			Twin Rotary
	Model		Model x No.	GPT442MAA x 1
	Motor type			BLDC
	Motor Output		W x No.	4,000 (at 60Hz) x 1
Refrigerant	Type			R410A
	Precharged Amount		g (oz)	4,400 (155.2)
	Chargeless-Pipe Length		m (ft)	40 (131.2)
	Additional Charging Volume		g/m (oz/ft)	20 (0.22)
	Control			Electronic Expansion Valve
Refrigerant Oil	Type			FVC68D
	Charged volume		cc x No.	1,300 x 1
Heat Exchanger	(Row x Column x Fins per inch) x No.			(2 x 32 x 14) x2
Fan	Type			Propeller
	Air Flow Rate		m³/min(ft³/min) x No.	60 x 2
Fan Motor	Type			BLDC
	Output		W x No.	124.2 x 2
Sound Pressure Level	Cooling	Rated	dB(A)	53
	Heating	Rated	dB(A)	54
Sound Power Level	Cooling	Rated	dB(A)	69
Piping Connections	Liquid	Outer Dia.	mm(inch) x No.	Ø 9.52 (3/8)
	Gas	Outer Dia.	mm(inch) x No.	Ø 19.05 (3/4)
Piping Length	Total Piping	Max.	m (ft)	145 (475.7)
	Main Piping	Max.	m (ft)	55 (180.4)
	Total Branch Piping	Max.	m (ft)	90 (295.3)
	Each Branch Piping	Max.	m (ft)	15 (49.2)
Maximum Height Difference	Outdoor Unit ~ Indoor Unit	Max.	m (ft)	30 (98.4)
	Indoor Unit ~ Indoor Unit	Max.	m (ft)	15 (49.2)
Operation Range (Outdoor Temperature)	Cooling	Min. ~ Max.	°C DB (°F DB)	-10 (14.0) ~ 48 (118.4)
	Heating	Min. ~ Max.	°C WB (°F WB)	-18 (-0.4) ~ 18 (64.4)

Note:

- All data are based on the following conditions:
 - Cooling Temperature : Indoor 27°C(80.6°F) DB / 19°C(66.2°F) WB
Outdoor 35°C(95°F) DB / 24°C(75.2°F) WB
 - Heating Temperature : Indoor 20°C(68°F) DB / 15°C(59°F) WB
Outdoor 7°C(44.6°F) DB / 6°C(42.8°F) WB
 - Piping Length : Interconnected Pipe Length = 5m
 - Difference Limit of Elevation (Outdoor ~ Indoor Unit) is Zero.
- Wiring cable size must comply with the applicable local and national code.
- Due to our policy of innovation some specifications may be changed without notification.
- Sound Level Values are measured at Anechoic chamber. Therefore, these values can be increased(maximum 3dB(A)) owing to ambient conditions during opration.

2. List of Functions & Accessory

2.1 List of Functions

Category	Function	A8UW54GFA0 [LMU540HV]
Reliability	Defrost / Deicing	O
	High Pressure Switch	X
	Low Pressure Switch	X
	Phase protection	O
	Restart Delay (3-minutes)	O
	Self Diagnosis	O
	soft start	O
	Test Function	O
Convenience	Auto operation(Artificial intelligence)	O
	Wiring Error Check	O
	Night Quiet Mode	O
	Peak Control	O
	Mode Lock	O
	Forced Operation	O
	Auto Restart Operation	O
	Central control(LGAP)	O
CAC Network Function	Dry contact	O
	PDI(Power Distribution Indicator)	O
	PI485	O

Note :

O : Applied, X : Not applied

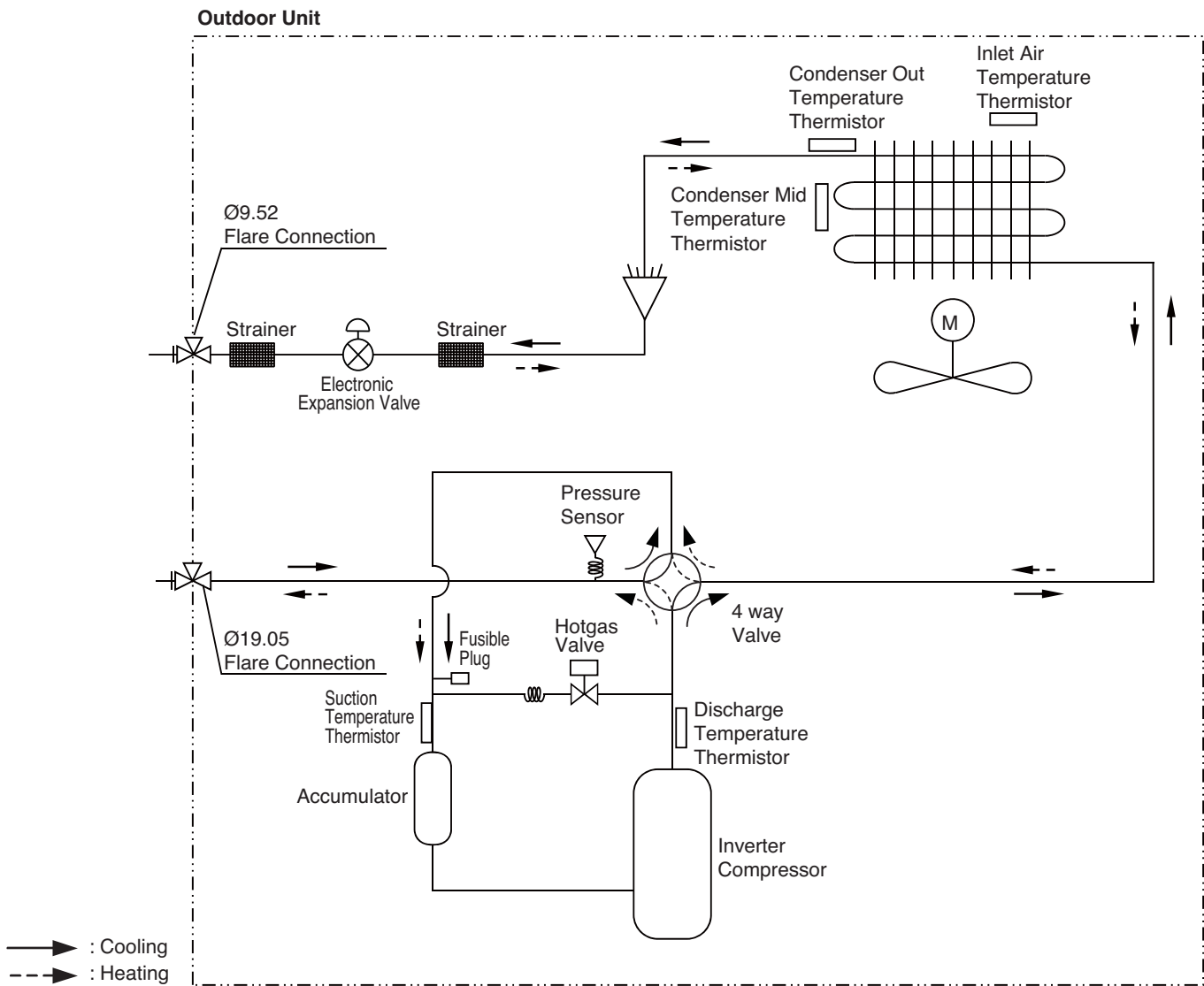
* Option : Model name & price are different according to options, and assembled in factory with main unit.

Accessory model name : Installed at field, ordered and purchased separately by the corresponding model name, supplied with separate package.

2.2 List of Accessory

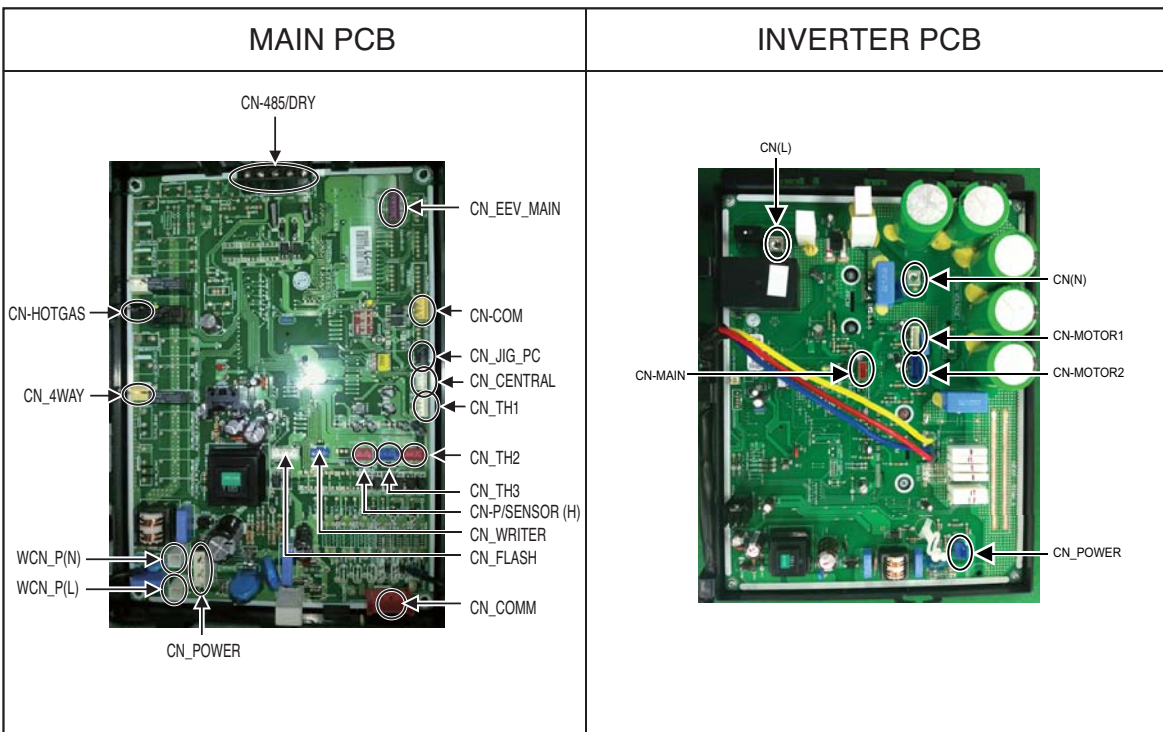
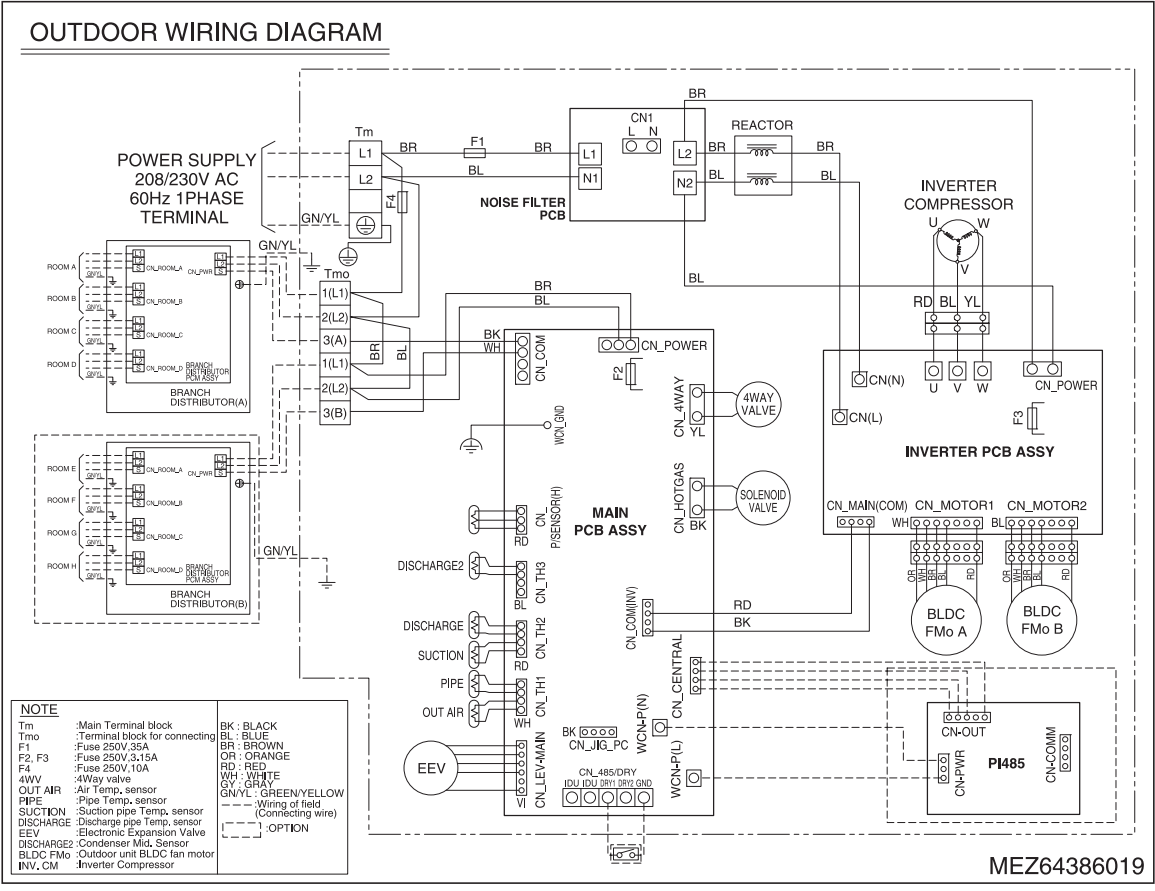
Device		A8UW54GFA0 [LMU540HV]
Central Controller	Simple Controller	PQCSB101S0
	Function controller	PQCSB101S0 + PQCSC101S0
	Function Scheduler	PQCSB101S0 + PQCSD130A0
	AC Ez	PQCSZ250S0
	AC Smart II	PQCSW320A1E
	Option Kit (SD card type)	PQCSE341A0 / PQCSE342A0
	ACP(Advanced Control Platform)	PQCPA11A0E / PQCPB11A0E
	AC Manager	PQCSS520A0E
	PI485	PMNFP14A0/PMNFP14A1
	DO(Digital Output) Kit	PQNFP00T0
BNU (Building Network Unit)	LONWORKS Gateway	PQNFB16A1
	BACnet Gateway	PQNFB17B0
Installation	Y branch	PMBL5620
	Header branch	PMBL1203F0
	Air Guide	X
	BD Unit	PMBD3620, PMBD3630, PMBD3640
ODU Dry Contact		O
Low Ambient Kit		O (Logical operation)

3. Piping Diagrams



PCB Connector	Description
CN-TH1	Air / Cond Out
CN-TH2	Suction / Discharge
CN-TH3	Cond Mid
CN-P/SENSOR(H)	Pressure Sensor
CN-EEV-MAIN	Electronic Expansion Valve
CN-HOTGAS	Hotgas Valve

4. Wiring Diagrams





P/NO : MFL67452409

JULY, 2012