

This Owner's Manual is provided and hosted by [Appliance Factory Parts](#).



# AMANA AP075M Owner's Manual

[Shop genuine replacement parts for AMANA AP075M](#)

***Amana***<sup>®</sup>

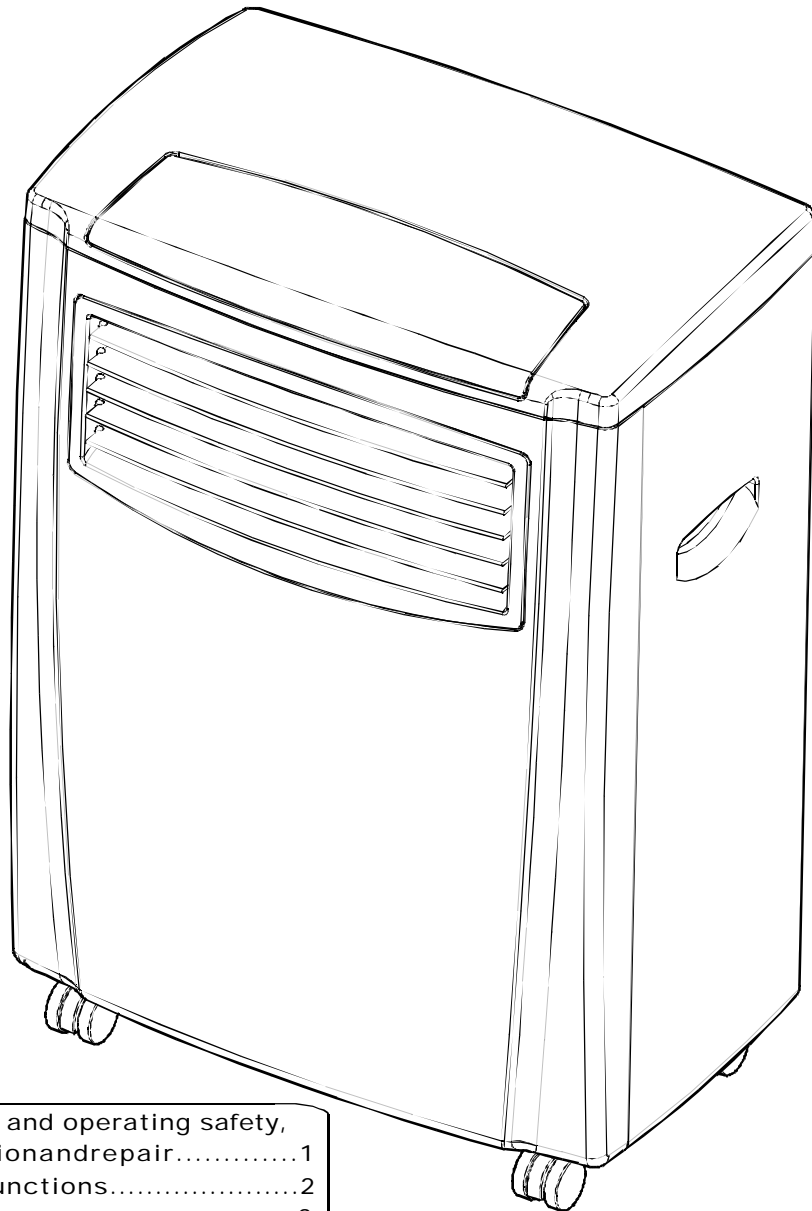
[Find Your AMANA Air Conditioner Parts - Select From 23 Models](#)

----- Manual continues below -----

HAIER AMERICA

# SERVICE MANUAL

## PORTABLE AIR CONDITIONER



Important points on service, and operating safety, with a flow-chart for inspection and repair.....	1
Appearance (outward) and functions.....	2
Troubleshooting.....	3
Technical specifications.....	4
Refrigerator system and schematic wiring diagrams.....	5
Exploded view.....	6
Parts list.....	7-8

This manual is for the use of technical personnel entrusted with maintenance.

Widetech reserves the right to change this dehumidifier's casing, circuit and parts without notice.

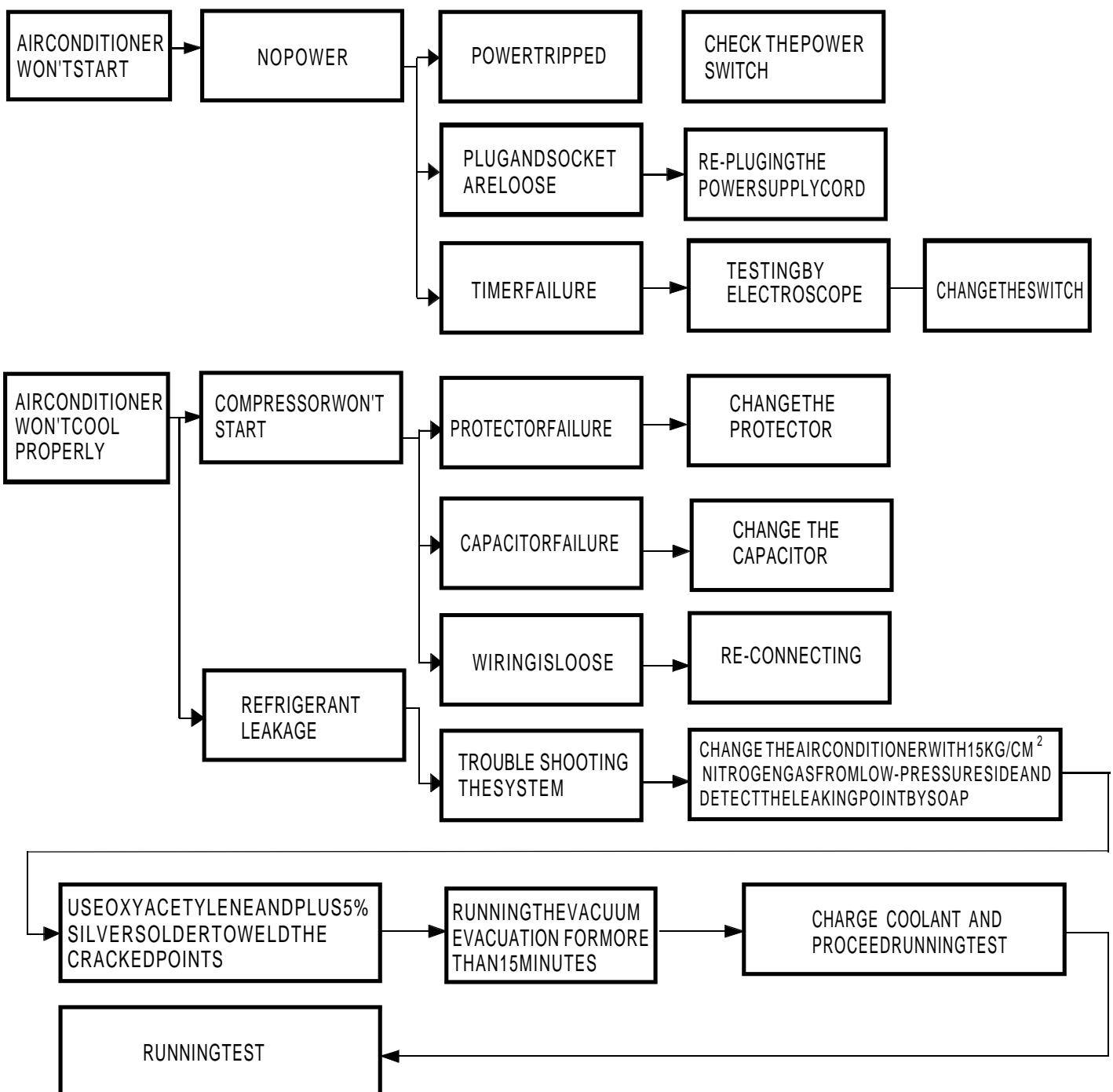
115V / 60Hz

# IMPORTANT POINTS ON SERVICE OPERATING SAFETY

Please follow these instructions carefully:

- Unplug the unit to avoid any danger from electric shock before disassembling the unit for repair.
- If there is any sound of the refrigerant circulating when in operation, avoid touching the cooling coils.
- If you need to perform any welding or soldering, be sure you are in a well ventilated area.
- Only a qualified professional should perform any welding on the unit.
- When repairing the unit, the specifications listed in this manual must be strictly adhered to when replacing any components.
- When replacing any electrical components they should be factory approved units.
- Be sure that any electrical components are properly wired and in place.

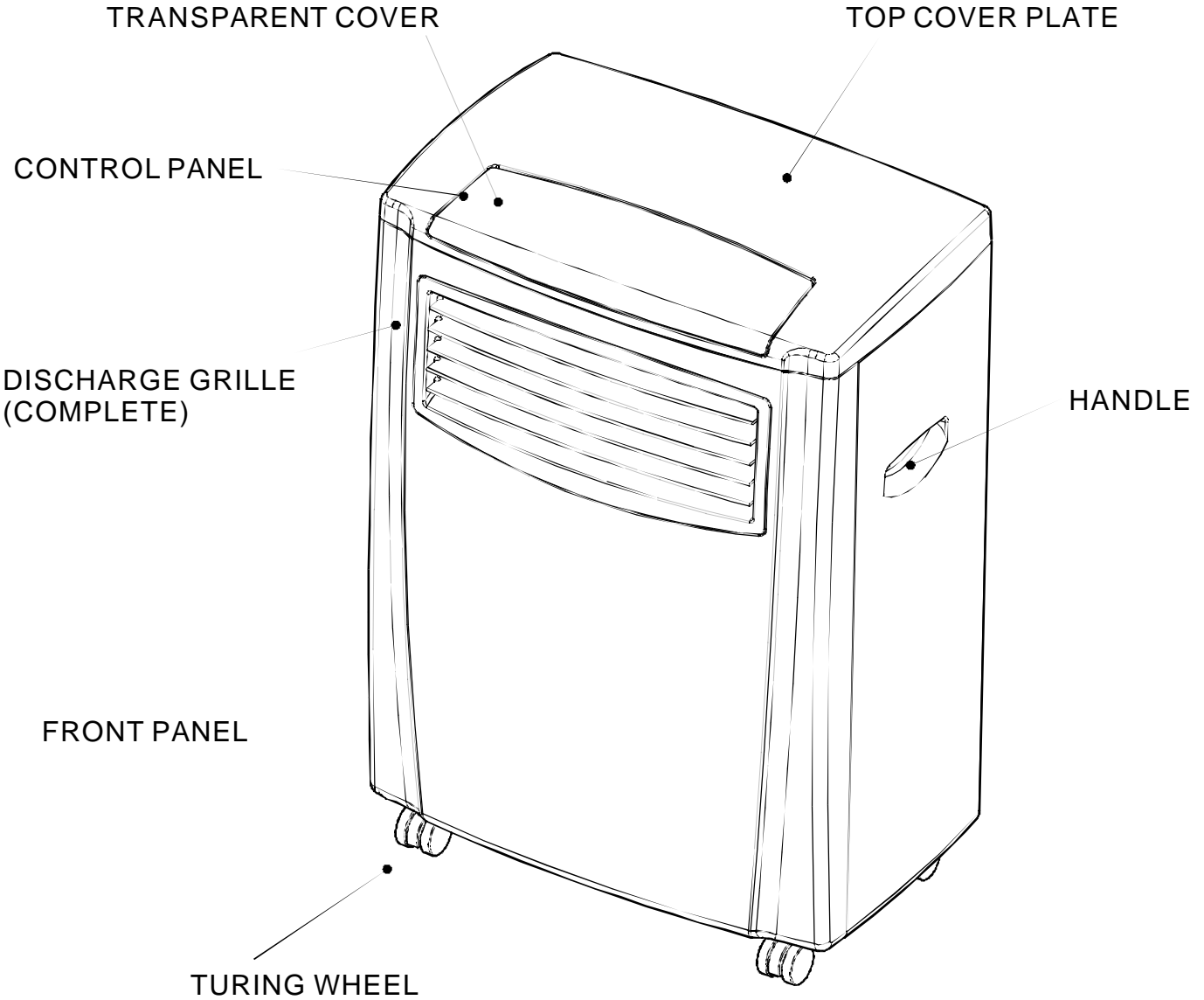
## FLOW CHART FOR INSPECTING AND REPAIRING THE UNIT



---

# APPEARANCE(OUT WARD)

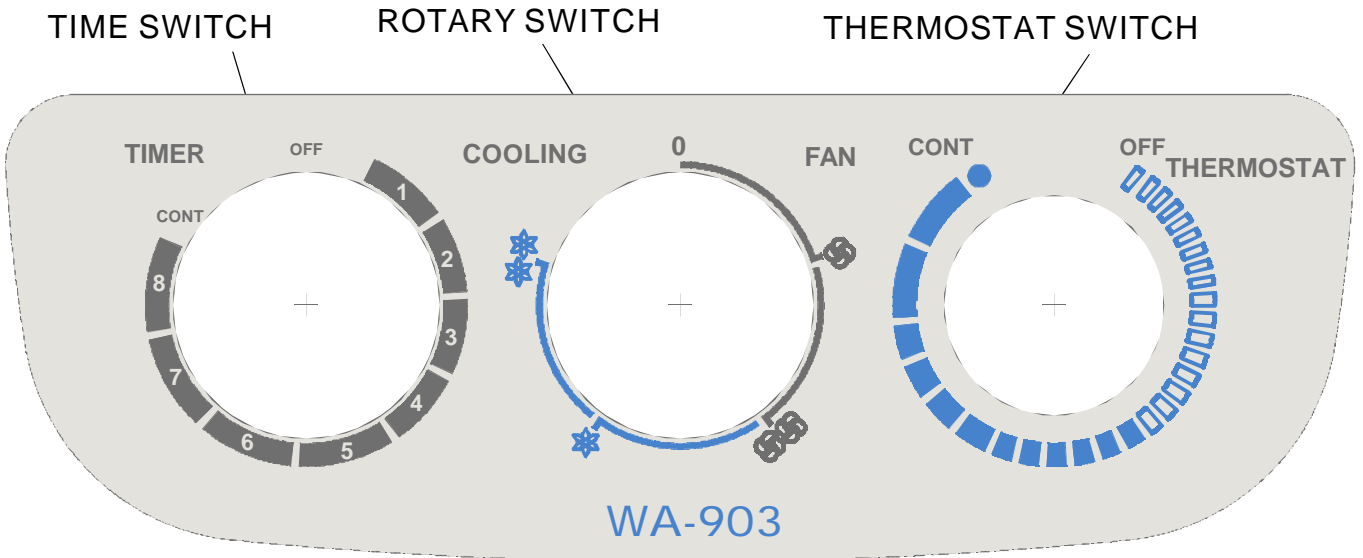
---



---

# FUNCTIONS

---



# TROUBLESHOOTING

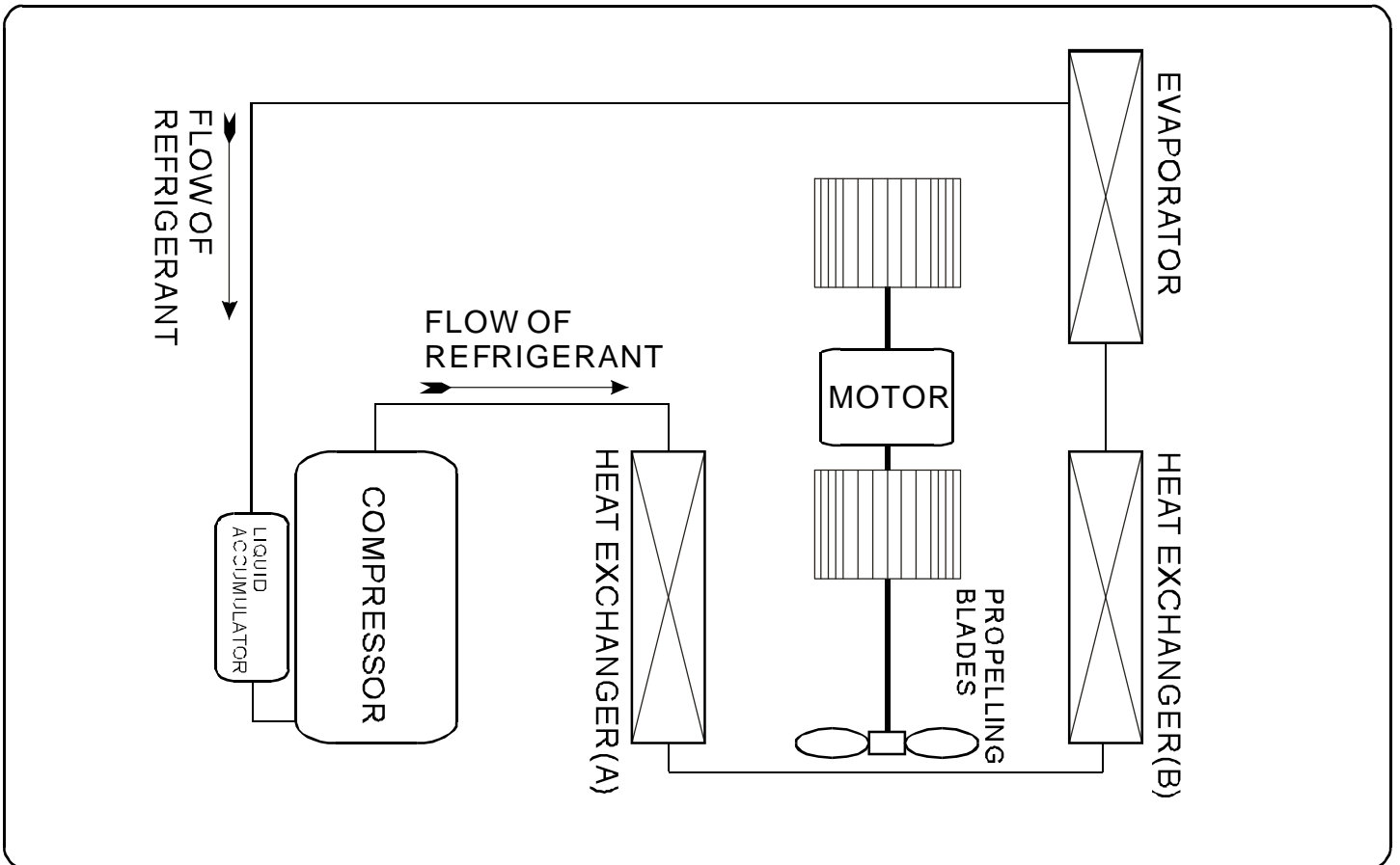
PROBLEM	POSSIBLE CAUSE	REMEDIES
The air conditioner doesn't work	<ul style="list-style-type: none"> <li>-There is a power failure</li> <li>-The plug is not connected</li> <li>-The timer is unable to work</li> <li>-The main switch has not been pressed</li> </ul>	<ul style="list-style-type: none"> <li>-Wait for the power return</li> <li>-Connect the plug</li> <li>-Provide repairment</li> <li>-Press the main switch</li> </ul>
The air conditioner works for short period only	<ul style="list-style-type: none"> <li>-The set temperature is too close to the room's temperature</li> <li>-There is something blocking the suction vent on the back of condenser</li> <li>-The fan on the condenser is blocked</li> </ul>	<ul style="list-style-type: none"> <li>-Decrease the setting temperature</li> <li>-Remove any obstacles</li> <li>-Provide repairment</li> </ul>
The air conditioner switches are off constantly	<ul style="list-style-type: none"> <li>-Malfunction</li> </ul>	<ul style="list-style-type: none"> <li>-Turn off the appliance remove the plug and contact the service center</li> </ul>
The air conditioner works but it does not cool the room	<ul style="list-style-type: none"> <li>-There is a window opened</li> <li>-There is a source of heat operating in the room (burner, lamp, etc.), or the room is crowded</li> <li>-The air filter is clogged</li> <li>-The capacity of the air conditioner is not suitable for the conditions or size of the room</li> <li>-The evaporator is frozen</li> </ul>	<ul style="list-style-type: none"> <li>-Close the window</li> <li>-Remove/switch off the source of heat</li> <li>-Decrease the set temperature</li> <li>-Clean the filter</li> <li>-Clean the air filter</li> <li>-Change the purifier filter, if necessary</li> <li>-Do not make the appliance operating at too low temperature (below 22°C)</li> </ul>
The appliance is very noisy and vibrates violently	<ul style="list-style-type: none"> <li>-The compressor blocking device has been loosen or the copper pipe is getting in touch with the body of the set</li> </ul>	<ul style="list-style-type: none"> <li>-Provide repairment</li> </ul>

# TECHNICAL SPECIFICATIONS

**AIR CONDITIONER**

ITEM	UNIT	AP075M		
OUTER DIMENSION	mm	520W*750H*360D		
REFERENTIAL USING AREA	m <sup>2</sup>	12 14		
RATED VOLTAGE	V/Hz	115 / 60		
COOLING CAPACITY	B.T.U.	7500		
DEHUMIDIFYING CAPACITY	L/H	1.25		
RUNNING CURRENT	A	8.7		
POWER CONSUMPTION	W	950		
INDOOR AIR VOLUME	m <sup>3</sup> /hr	250		
COMPRESSOR	MODEL	2R12S3R126AUB	K1NC104ABBBBD	
	INPUT POWER	W	740	710
	RUNNING CAPACITOR	uF/V	35/250	55/250
	PROTECTOR		MRA98503/MRA98706 / MRA98706-9090	T0262/46
	LOCKED ROTOR AMPS	A	6.9	6.23
	MODEL		LS-40T2-4P	
MOTOR	OUTPUT POWER	W	40	
	RUNNING CAPACITOR	uF/V	8/250	
EVAPORATOR		2R11S17FPI		
CONDENSER		2R9S19FPI+3R9S17FPI		
REFRIGERANT	R22/g	440	400	
WEIGHT	Kg	32		
REMARK				

# REFRIGER SYSTEM DIAGRAM



# SCHEMATIC WIRING DIAGRAM

