

This Owner's Manual is provided and hosted by [Appliance Factory Parts](#).



DE'LONGHI EC860 Owner's Manual

[Shop genuine replacement parts for DE'LONGHI EC860](#)



[Find Your DE'LONGHI Coffee Maker Parts - Select From 292 Models](#)

----- Manual continues below part list -----

Available Replacement Parts for DELONGHI EC860

5313217701	O ring
6132101300	Spring
621986	Valve ring
5313217751	O ring
5332177500	Oring
5332196000	O-ring
5332289700	Water valve button
5332117200	Pressing device
534848	Water pump support
5513212881	Tube
5332169300	Removable steam nozzle only
5132104100	Microswitch
5232105100	Nt sensor
AS13200286	Coupling
5213225251	Water volume meter
5113211291	Pump
535693	Steam nozzle o ring
5332144800	O ring
511876	Tco 192
537177	Gasket
6113213191	Spring
5532146000	Tube
5513270599	Frother
5513213661	120mm tube
5213214711	Power board
5332239300	Spacer
5013211561	Power supply cord
5113210601	Switch
5313217741	O-ring
5313218351	Connection

5313221481	Gasket
AS00005075	Gasket
5313222031	Connector
5313222311	Support
5313223841	Drip tray
5313230311	Tube (sil nat)di=5 de=9 l=170
5513270549	Cup plate
6013211191	Diffuser
5513280991	Small one-cup
6113211931	Valva spring
7313281669	Cup plate
7313286119	Measuring spoon
5313228791	O-ring
5513281001	Two Cup Filter
5513292811	WATER FILTER
5513270219	Tube



De'Longhi Appliances
via Seitz, 47
31100 Treviso Italia

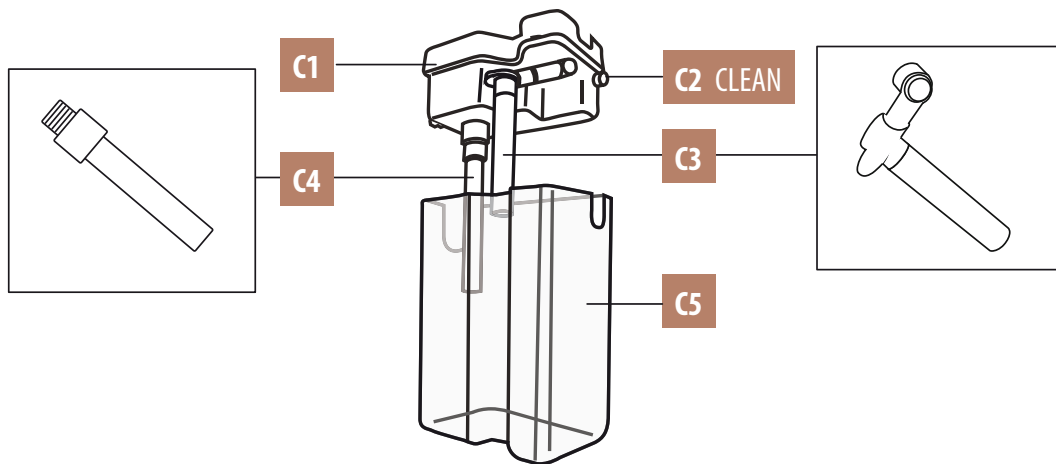
Instructions for use

COFFEE MAKER

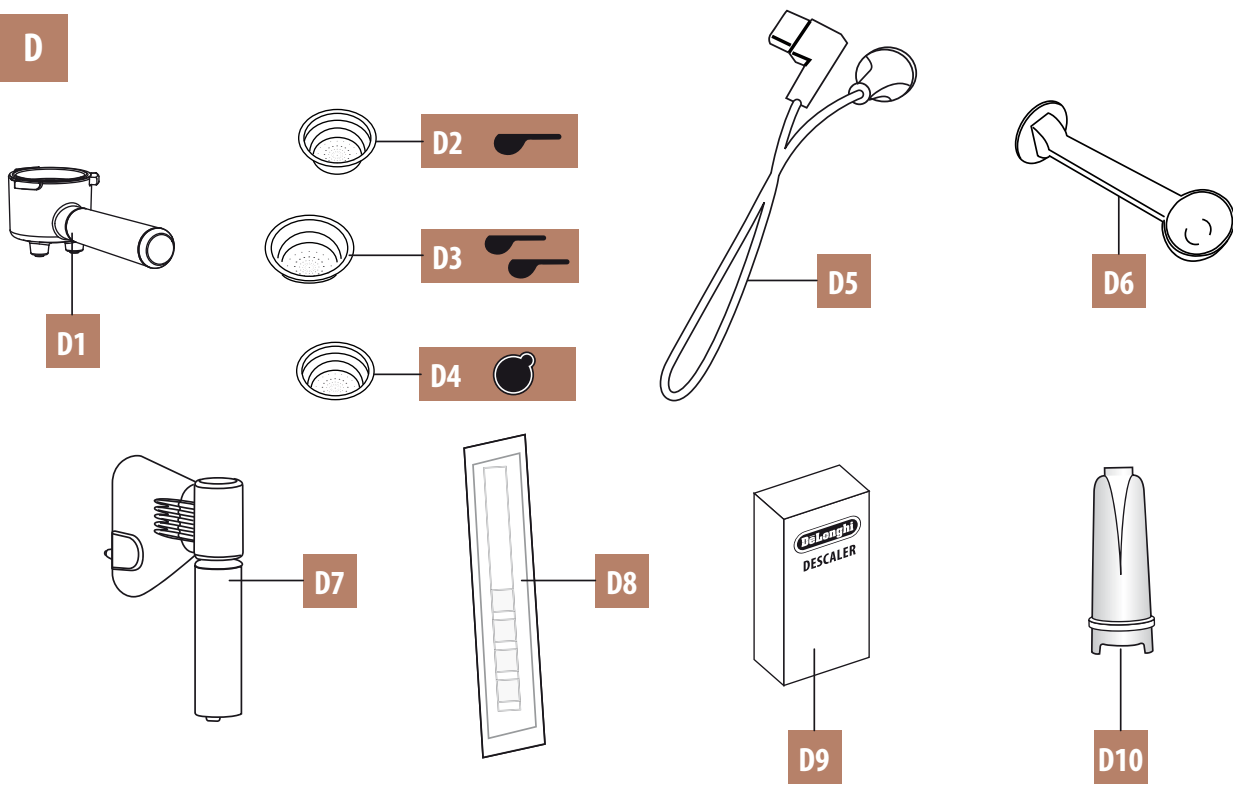
EC860

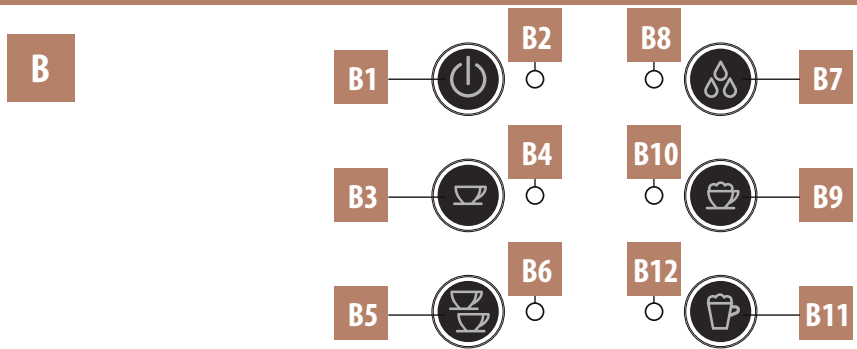
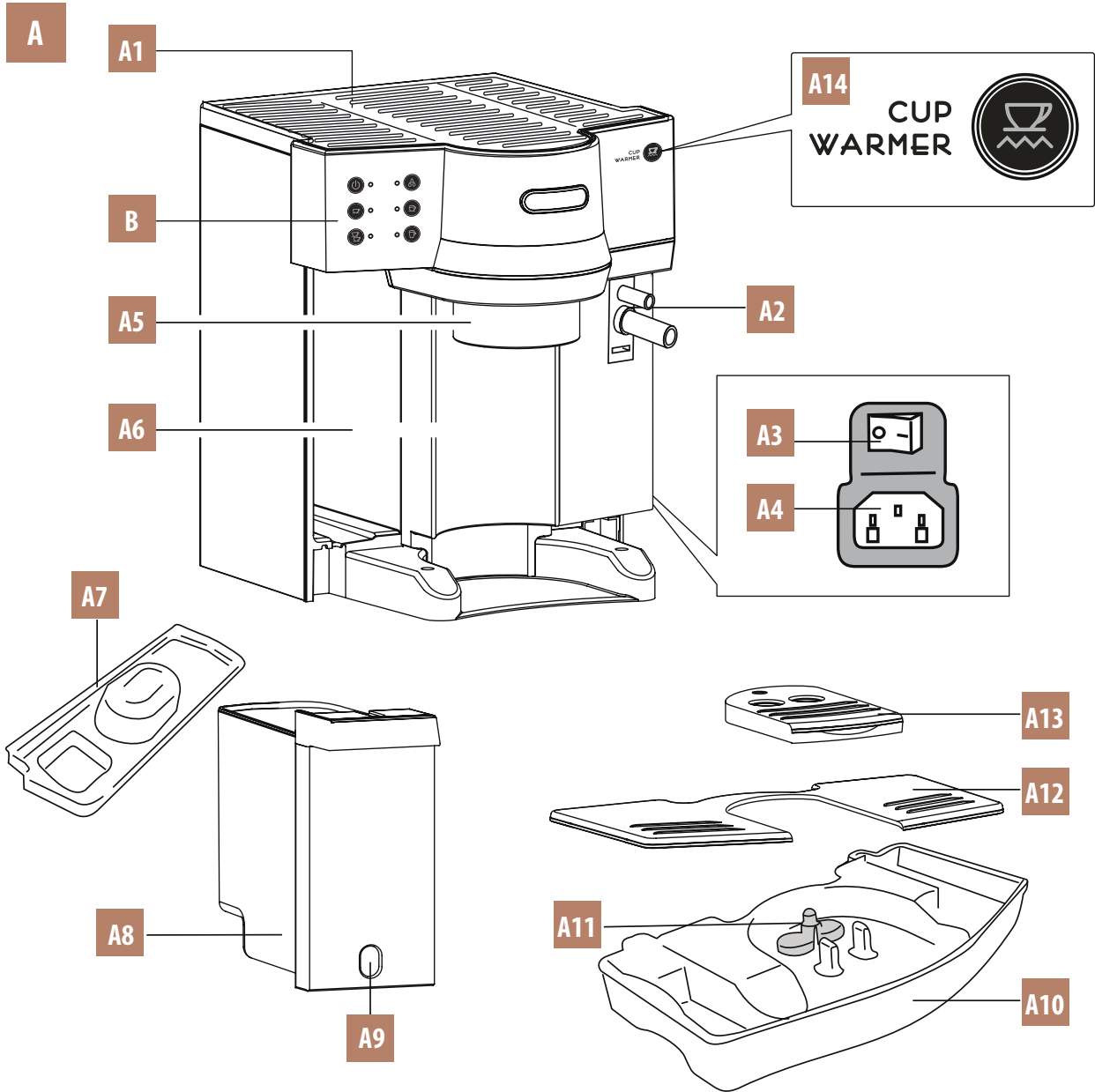


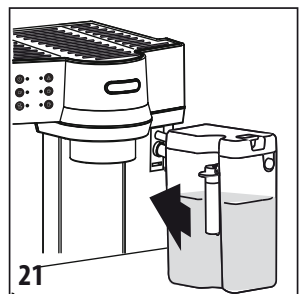
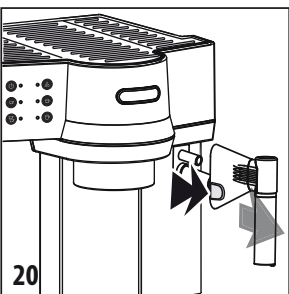
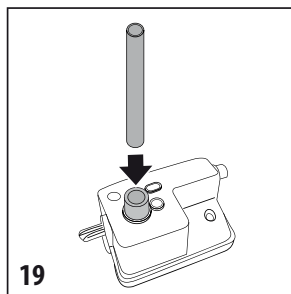
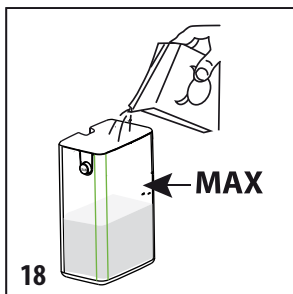
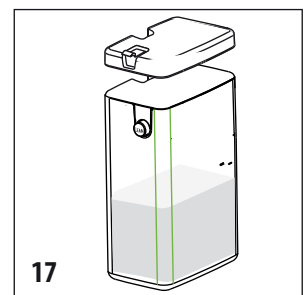
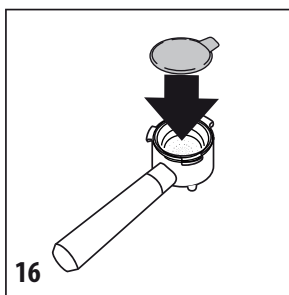
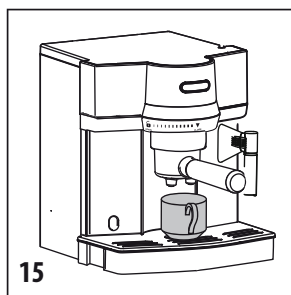
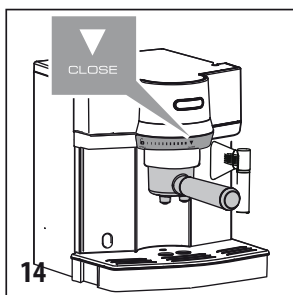
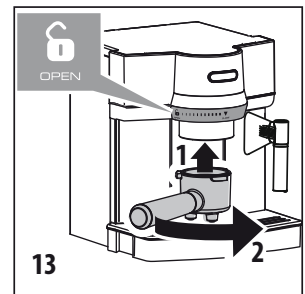
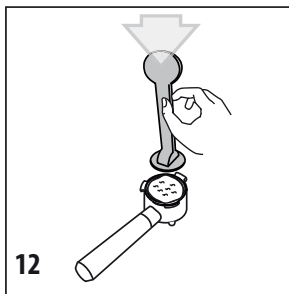
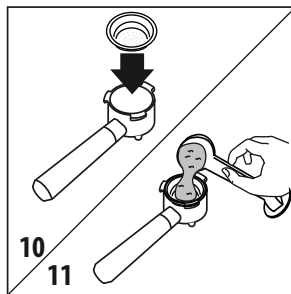
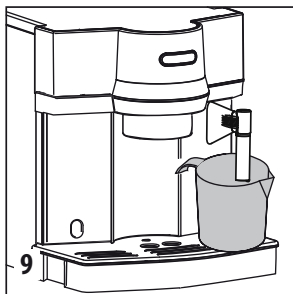
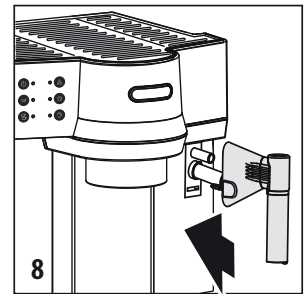
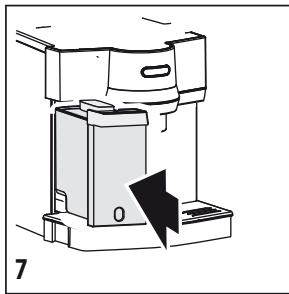
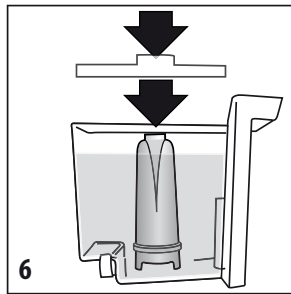
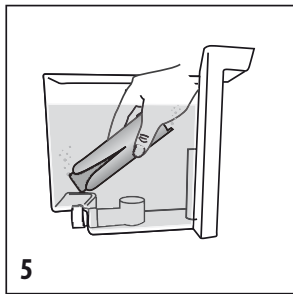
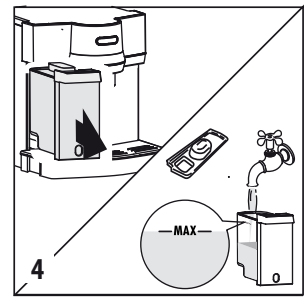
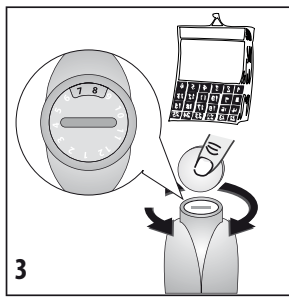
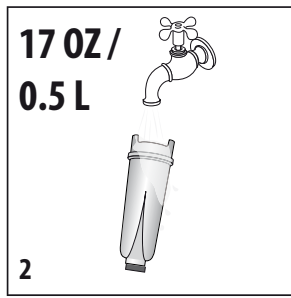
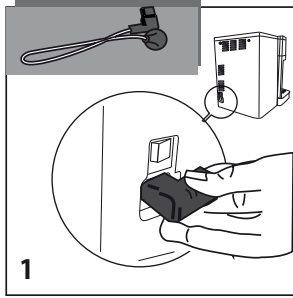
C

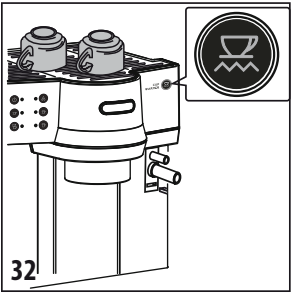
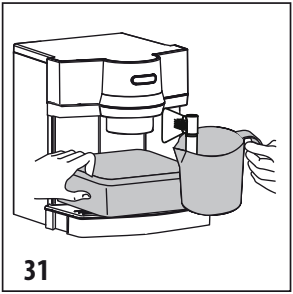
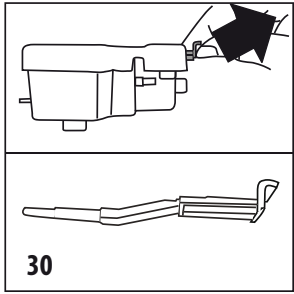
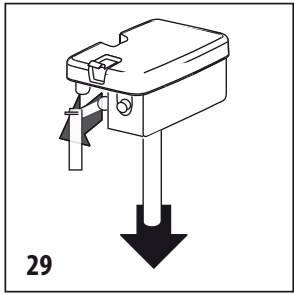
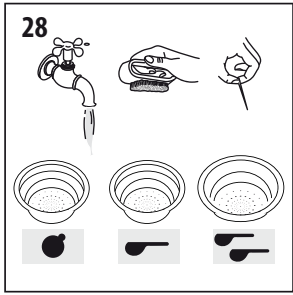
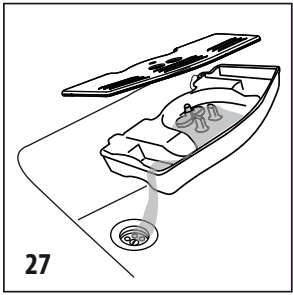
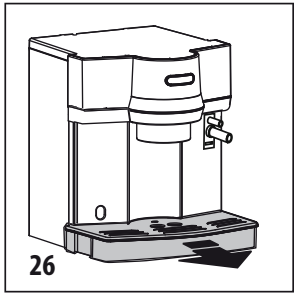
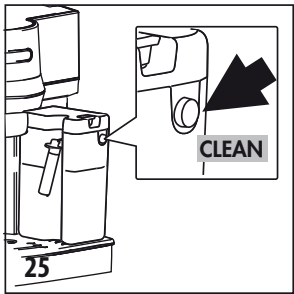
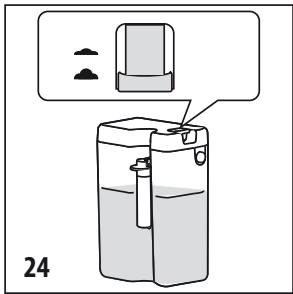
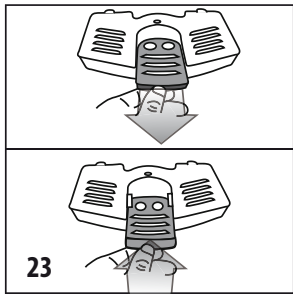
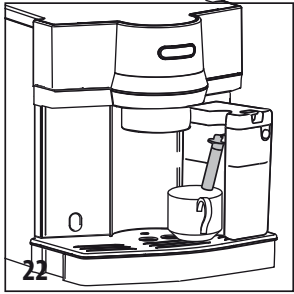


D









Symbols used in these instructions

The important recommendations have these symbols. These warnings must be followed.



Danger!

Failure to comply can be or is the cause of injury due to life-threatening electric shocks.



Attention!

Failure to comply can be or is cause of injury or damage to the appliance.



Scalding hazard!

Failure to comply can be or is the cause of scalding or burns.



Please note:

This symbol highlights recommendations and important information for the user.

Fundamental warnings regarding safety



Danger!

As the appliance operates using electric current, electric shocks can not be excluded.

Therefore, follow the safety recommendations given:

- Do not touch the appliance when you have wet hands or feet.
- Do not touch the plug with wet hands.
- Make sure that the socket used can always be easily reached, so that the plug can be removed when required.
- Remove the plug from the socket by pulling directly on the plug itself. Do not pull the cable as damage could be caused.
- Remove the plug from the socket to disconnect the appliance completely.
- Do not attempt to repair the appliance if it should breakdown.
Switch the appliance off, remove the plug from the socket and contact the After-Sales Technical Assistance.
- If the plug or power supply cable are damaged, have them replaced exclusively by the De'Longhi After-Sales Service, in order to avoid risks
- During cleaning, never immerse the machine in water: it is an electric appliance.
- Before performing any cleaning operations to the external parts of the appliance, switch the machine off, remove the plug from the socket and let the machine cool down.



Attention:

Keep the packaging material (plastic bags, expanded polystyrene) out of the reach of children.



Attention:

Do not allow the appliance to be used by persons (including children) with reduced psycho-physical-sensorial capacities or that have insufficient experience and knowledge, unless they are carefully monitored and trained by a person responsible for their safety. Watch children, do not let them play with the appliance.



Scalding hazard!

This appliance produces hot water and steam may form during operation.

Pay attention not to come into contact with hot water sprays or steam.

Do not touch the cup holder when the appliance is on because it can get.

Complying with intended use

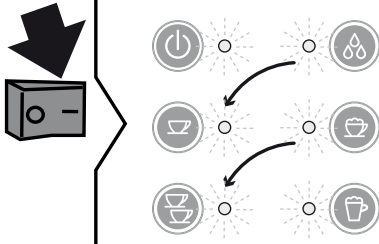


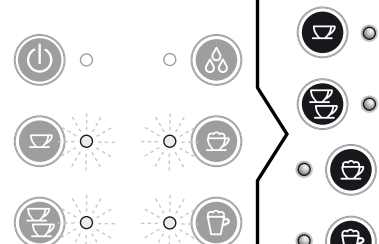



This appliance is manufactured for the preparation of coffee and to heat beverages.

This appliance is intended exclusively for domestic use. It is not intended for the use in:

- rooms used as kitchens for personnel in shops, offices and other work areas
- farm holidays
- hotels, motels and other reception structures
- guest houses

Any other use must be considered improper and therefore dangerous. The manufacturer is not liable for damage deriving from improper use of the appliance.

Functioning lights en

Lights	Operation	Meaning of lights
	<p>Turn on from general ON/OFF switch, at the back of the appliance.</p>	<p>The appliance performs a self-test, signalled by the sequential flashing of lights.</p>
	<p>The appliance is on: no accessory is connected to coupling A2.</p>	<p>The appliance is heating up to make coffee: when the 1 or 2 cup lights stop flashing, the appliance has reached the ideal temperature to deliver coffee.</p>
	<p>The appliance is on: the hot water spout D7 is connected to coupling A2.</p>	<p>The appliance is heating up to make coffee or to deliver hot water: when the 1 or 2 cup lights and the hot water spout light stop flashing, the appliance has reached the ideal temperature to deliver coffee or hot water.</p>
	<p>The appliance is on: the milk container C is connected to coupling A2.</p>	<p>The appliance is heating up to make coffee, cappuccino or latte macchiato: when the 1 or 2 cup lights, the cappuccino and latte macchiato lights stop flashing, the appliance has reached ideal temperature to deliver coffee or cappuccino or latte macchiato.</p>
	<p>The appliance has been unused for 75 minutes for the ON/STAND-BY button has been pressed.</p>	<p>The appliance is in STAND-BY: to switch it back on, press the  button. The time interval before stand-by is adjustable: see section "Adjust Stand-by interval".</p>
	<p>The water tank is empty or the appliance cannot deliver.</p>	<p>See section "Troubleshooting." (page 15).</p>

Description of appliance

(page 3 - A)

- A1. Cup holder/Warming plate
- A2. Water spout/milk container coupling
- A3. General ON/OFF switch
- A4. Power supply cable socket
- A5. Boiler outlet/Infusion assembly
- A6. Water tank seat
- A7. Water tank lid
- A8. Water tank with seat for water filter
- A9. Water refill indicator
- A10. Drip tray
- A11. Indicator for drip tray maximum water level
- A12. Cup tray
- A13. Sliding tray for long coffee/latte macchiato glass
- A14. Cup warmer button

Description of control panel (B)

(page 3 - B)

- B1. ON/Stand-by Button
- B2. ON/Stand-by Light
- B3. 1 cup button
- B4. 1 cup / "temperature OK" light
- B5. 2 cups button
- B6. 2 cups / "temperature OK" light
- B7. Hot water button
- B8. Hot water light
- B9. Hot milk/cappuccino button
- B10. Hot milk/cappuccino / "temperature OK" light
- B11. Hot milk/latte macchiato button
- B12. Hot milk/latte macchiato / "temperature OK" light

Milk container description

(page 2 - C)

- C1. Milk frother lid with froth regulator
- C2. CLEAN button
- C3. Milk Spout Tube
- C4. Milk intake tube
- C5. Milk container

Description of accessories

(page 2 - D)

- D1. Filter-holder cup
- D2. 1 coffee crema filter
- D3. 2 coffee crema filter
- D4. ESE pod crema filter
- D5. Power supply cable (removable)
- D6. Tamper/dispenser measure

- D7. Removable water/steam spout
- D8. Reactive strip to detect water hardness
(Total hardness test)
- D9. Descaler
- D10. Water softener filter

Instructions for use

Read these instructions carefully before using the appliance. Failure to respect these instructions may result in personal injury or damage to the appliance.

The manufacturer is not liable for damage as a result of failure to comply with these user instructions.



Please note:

Keep these instructions. If the appliance should be transferred to other persons, these instructions must accompany it.

Checking the appliance

After the packaging has been removed, check the integrity of the appliance and the presence of all accessories. Do not use the appliance if it is visibly damaged. Contact the Customer Experience.

Installing the appliance



Attention!

The following safety measures must be complied with when installing the appliance:

- The appliance could be damaged by water infiltration. Do not position the appliance near water faucets or sinks.
- The appliance could be damaged if the water it contains freezes. Do not install the appliance in a room where the temperature can fall below freezing point.
- Position the power supply cable in a way that it cannot be damaged by sharp edges or by contact with hot surfaces (e.g. electric stoves, cooking surfaces, or gas burners).

Connecting the appliance



Attention!

Make sure that the electric mains voltage corresponds with that indicated on the data plate on the base of the appliance. Insert the power supply cable connector in the socket on the back of the appliance (fig. 1); then insert the plug in the power outlet. Check that the mains power supply voltage corresponds to the value indicated on the rating plate on the bottom of the appliance. If the power socket does not match the plug on the appliance, have the socket replaced with a suitable type by a qualified professional.

Activation of the water filter and filling of the water tank

- Remove the filter from the packaging and rinse it with about 17 OZ / 0.5 L of running water (fig. 2).
- Turn the calendar disc (see fig. 3) until the following 2 months of use are displayed.


Please note

the filter has a two month duration if the appliance is used normally, whereas if the machine remains unused with the filter installed, it has a maximum 3 month duration.




- Remove the water tank and fill it with fresh water (do not exceed the MAX line) (fig. 4).
- Completely dip the filter in the water, tilting it to enable air bubbles to come out (fig. 5).
- Insert the filter in the appropriate seat (fig. 6), press down and close the tank with the lid.
- Place the tank back into the machine (Ensure the water level is not over the MAX line) (fig. 7).

The filter is now activated and the machine can be used.



Appliance first use


- Turn the appliance on by pressing the I/O main switch A3 at rear in pos. I: the appliance performs a self-test, signalled by the sequential flashing of the lights.
- Once the self-test is completed, the “hot water spout” light B8 flashes while the others turn-off: the appliance signals it is necessary to insert the hot water spout (fig. 8).
- Place a container underneath the spout with minimum capacity of 100 ml (fig. 9).
- Press the “hot water” button : delivery starts and interrupts automatically.
- The coffee and water spout lights flash to indicate the appliance is reaching temperature: when the lights stop flashing and remain permanently on, the appliance is ready for use.

Please note: upon first use

- If lights  and  flash, press the  button again.
- Upon first use, it is necessary to make 4-5 coffees or 4-5 cappuccinos before the machine gives a satisfying results.



Settings of the programming menu

To access the programming menu, ensure the appliance is in stand-by, simultaneously press buttons  and  until the ON/Stand-by (B2) light flashes: the appliance is in programming mode. Set the machine as wanted; to exit the

programming menu, press button  again.



Setting the temperature













To modify the temperature (low, medium, high) of the water used to make the coffee, proceed as follows:

1. Access the programming menu;
2. Keep button  pressed until the lights relative to the wanted temperature turn-on (see chart below).
3. When the lights relative to the wanted temperature turn-on, release the button.
4. Press  to turn the appliance off (stand-by).

Adjust Stand-by

The machine is pre-set to switch to stand-by after 75 minutes of non-use. This time interval can be modified so that the appliance switches off after 15 minutes or after 3 hours. Proceed as follows:

1. Access the programming menu;
2. Keep the  button pressed until the lights relative to the desired stand-by interval turn-on(see chart below).
3. When the lights relative to the wanted stand-by interval turn-on, release the button.
4. Press  to turn the appliance off (stand-by).


Temperature	Corresponding lights	Stand-by after
Low	 • 	15 minutes
Medium	 •   • 	75 minutes
High	 •   •   • 	3 hours






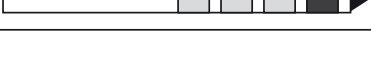























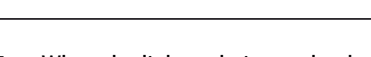
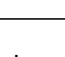

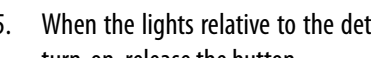
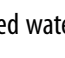
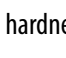
Set the water hardness


The lights signaling the need to descale the appliance, after a pre-set period of operation depends on the hardness of the water. It is possible to program the machine according to the actual water hardness in use in the area, thus making descaling less frequent. Proceed as follows:

1. Remove the provided reactive strip “TOTAL HARDNESS TEST” from its packaging.

Instructions for use en

2. Completely dip the strip into a glass of water for one second.
3. Remove the strip from the water and shake it slightly. After about one minute 1, 2, 3 or 4 red squares form, depending on the hardness of the water (4 red squares = very hard water).
4. Access the programming menu.
5. Once obtained the result of the strip, keep the “hot water”  button pressed until the lights turn-on, as in following table:

5. When the lights relative to the detected water hardness turn-on, release the button.
6. Press  button to turn the appliance off (stand-by).

Please note:

If the water filter is correctly used, set the machine on to a lower hardness level compared to that detected by the reactive strip.

ON/OFF and stand-by

When the main switch is in pos. I, turn the appliance on and off (stand-by) by pressing the  button.

The appliance automatically turns off (stand-by) after 75 minutes of non-use: to change the non-use time, refer to paragraph “Adjust stand-by”.


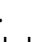


How to prepare espresso using ground coffee

- Insert the filter for ground coffee (D2 or D3) in the filter-holder (fig. 10). Use the filter  if wanting to make one coffee or the filter  if wanting to make 2 coffees.

- To prepare one coffee, fill the filter with one level measuring spoon of ground coffee, about 0.24 oz./7 gr (fig. 11). If you wish to prepare two cups of coffee, fill the filter with two less-than-level measuring spoons of ground coffee (about 0.48 oz./7+7 gr.). Fill the filter a little at a time to prevent the ground coffee from overflowing.

Attention:

For correct use, before filling the filter with ground coffee always make sure there is no residual coffee from the previous infusion in the filter.

- Distribute the ground coffee evenly and press it lightly using the coffee tamper (fig. 12). Pressing the ground coffee is very important to obtain a good espresso. If excessively pressed, the coffee will slowly leak and it will be stronger. Whereas, if slightly pressed, the coffee will come out too quickly and will be light.
- Remove any excess coffee from the rim of the filter-holder and attach it to the machine: for correct attachment, align the filter-holder handle to symbol  OPEN (fig. 13), attach the filter-holder and turn handle to the right, until aligned to position  CLOSE (fig. 14).
- Position the cup or cups under the filter-holder spouts (fig. 15). It is advised to heat the cups before making the coffee, rinsing them with hot water.
- Ensure the lights relative to the coffee buttons are on, press the coffee buttons ( or ): the appliance proceeds and interrupts automatically.




How to prepare espresso using pods


Please note:

use pods that comply with the ESE Standard: this will be indicated on the packaging by the following mark.



The ESE Standard is a system accepted by leading coffee pod manufacturers and allows espresso coffee to be made simply and without mess.

- Insert the filter for pods coffee (D4 ) in the filter-holder (fig. 10).
- Insert the pod, centering it as close as possible on the filter (fig. 16). Always follow the instructions of the pod pack for correct positioning of the pod in the filter.
- Attach the filter-holder to the machine: for correct attachment, align the filter-holder handle to symbol  OPEN (fig. 13), attach the filter-holder and turn handle to the right, until aligned to position  CLOSE (fig. 14).

- Position the cup under the filter-holder spouts. It is advised to heat the cup before making the coffee, rinsing it with hot water.
- Ensure the lights relative to the coffee buttons are on, press the coffee button : the appliance proceeds and interrupts automatically.

 **Please note:**



- While the machine is preparing the coffee, it can be stopped at any time by pressing the previously pressed coffee button.
- Once delivery is completed, if you would like to increase the amount of coffee inside the cup, keep the previously pressed coffee button pressed (within 3 seconds) of delivery.
- Turn the handle from right to left to release the filter-holder.

 **Scalding hazard!**

To avoid sprays, never release the filter-holder while the machine is delivering and wait a few seconds after delivery.


Program the amount of coffee in the cup

The machine has been set by default to deliver standard amounts of coffee. If you would like to amend to amend these quantities, proceed as follows:

1. Place a cup under the coffee spout.
2. Keep the button to be programmed ( or ) pressed. The machine starts delivering coffee.
3. As soon as the wanted amount of coffee in cup is reached, release the button: delivery stops.

The machine is now re-programmed according to the new amount.

Warmer cup (fig. 32)

The warmer cup can be switched on by pushing the  button: leave the cups on the appliance as long as they are warm. This is useful to have warmer coffee.

 **Important!**

When the appliance turns to low power function or stand-by the cup warmer is still on until you don't press the button to switch it off. Pay attention not to touch it as it is hot.

How to prepare milk-based drinks

To avoid milk with poor froth or large bubbles, always clean the lid of the milk and the hot water nozzle as described in the "cleaning the milk container" at page 13.

1. Remove the lid (fig. 17);
2. Fill the milk container with sufficient amount of milk, not

exceeding the maximum of 0.5 l (fig. 18). Remember that every notch on the side of the container corresponds to 100 ml of milk.

 **Please note!**

- For a more dense and homogenous froth, It is recommended to use skim milk at refrigerator temperature (about 41° F / 5° C).
3. Make sure the milk intake tube is correctly inserted in the bottom of the milk container lid (fig. 19).
 4. Place the lid on the milk container.
 5. Remove the hot water spout from the nozzle by pushing the button (fig. 20).
 6. Attach by inserting the container to the nozzle (fig. 21).
 7. Set-up the machine to make coffee (see "how to prepare espresso" pg. 10).
 8. Place the cup for cappuccino or the glass for Latte Macchiato under the coffee spout and adjust the milk spout (fig. 22). If using tall cups or glasses, reposition the cup-holder, as shown in fig. 23).
 9. Vary the froth regulator depending on the amount of froth wanted and type of milk used (fig. 24).

To prepare the Cappuccino: press button .

To prepare the latte macchiato: press button .

9. After having delivered the frothed milk, the machine automatically prepares the coffee.



 **Please note!**

- For a hotter cappuccino, it is advised to press the CLEAN button to heat the ducts of the milk frother device (see successive paragraph).
- To prepare the cappuccino or the latte macchiato, the appliance performs 2 deliveries: first the milk and subsequently the coffee. If you would like to interrupt the delivery in progress, press the previously pressed button.
- Once delivery is completed, if wanting to increase the amount of milk or coffee inside the cup, keep the button (within a few seconds) relative to the preparation in progress pressed.
- Do not leave the milk container out of the refrigerator for too long: the higher the milk temperature (41° F / 5° C is ideal), the poorer the quality of the froth.

Cleaning the milk frother device using the CLEAN button

After every use of the milk functions, perform cleaning to eliminate the milk residues as follows:

1. Leave the milk container inserted in the machine (it is not necessary to empty the milk container);

2. Place a cup or other container under the milk spout tube.
3. Keep the "CLEAN" button (fig. 25) pressed: lights  and  flash. When the lights stop flashing and the appliance goes back to ready for use, release the "CLEAN" button: the steam cleans the circuits inside the milk frother.

Program the amount of coffee and milk in the cup for cappuccino or milk

The machine has been set by default to deliver standard amounts of coffee and milk. If you would like to amend these quantities, proceed as follows:

1. Place a cup under the coffee spouts and the milk spout tube.
2. Press the button relative to the preparation with milk to be programmed and keep it pressed. After a few seconds, the machine starts delivering the milk.
3. Once the required quantity of milk has been delivered into the cup, release the button; milk delivery stops.
4. Program the amount of coffee into the cup as for the amount of milk.
5. Programming is confirmed by the lights flashing for 3 seconds.

The machine is now re-programmed according to the new amounts of milk and coffee.


Preparing the hot water and steam



Scalding hazard!

Do not leave the machine unattended when delivering hot water. The spout heats up during delivery, therefore, only the black part must be held.

Delivering hot water

1. Check the hot water spout is correctly attached (fig. 8).
2. Place a cup under the spout (as near as possible to avoid sprays).
3. Press the  button (B7): the relative light flashes and the appliance starts hot water delivery.
4. The machine automatically stops delivery.




Please note!

- To manually interrupt the hot water delivery, press  button again.

Programming the amount of water automatically delivered


If you would like to amend the amount of water set by default, proceed as follows:

1. Place a cup under the water spout.

2. Keep the  button pressed.
3. When the hot water in the cup reaches the required level, release the button. Programming is confirmed by the lights flashing for three seconds.

The machine is now re-programmed according to the new amount.

Delivering steam

1. Check the hot water spout is correctly attached (fig. 8).
2. Fill a container with the liquid to be heated/frothed and immerse the water/steam spout into the liquid.
3. Press twice the  button (B7): the relative light flashes and the appliance starts steam delivery.
4. When the required temperature is obtained, interrupt steam delivery by pressing the button again. (You should not discharge steam for more than 3 minutes at a time).





Important!

Always stop steam delivery before extracting the container containing the liquid to avoid burns from splashes.

Cleaning the water spout after use

Always clean the spout after use to avoid the build-up of milk residues and prevent the spout from clogging.

1. Place a container under the cappuccino maker and press the  button to deliver a little water (fig. 3). Stop the flow of water by pressing the  button again.
2. Wait a few minutes for the cappuccino maker to cool down, then extract the hot water spout.
3. Check the hole is not blocked. If necessary, clean with a pin.
4. Wash all parts of the cappuccino maker thoroughly with a sponge and warm water.
5. Reinsert the water spout.

Cleaning



Attention!

- Do not use solvents, abrasive detergents or alcohol to clean the machine.
- Only the milk container (D) can be washed in the dish washer. No other part of the appliance can be washed in the dishwasher.
- Do not use metal objects to remove coffee deposits or fouling as they might scratch the metal or plastic surfaces.

Cleaning the drip tray

Attention!

The drip tray is equipped with a floating water level indicator (red) (A11). As soon as this indicator starts protruding from the cup tray, empty the tray and clean it, otherwise the water may overflow and damage the machine, and the surrounding work-top.

1. Remove the drip tray (fig. 26).
2. Remove the cup tray, dispose of the water (fig. 27) and clean the tray using a cloth: then re-assemble the drip tray.
3. Re-insert the drip tray.

Cleaning the coffee filters

Regularly clean the coffee filters rinsing them under running water. Check that the holes are not blocked. If they are, clean them using a pin (fig. 28).

Cleaning the boiler outlet

Rinse the boiler outlet every 200 coffees delivered, by delivering 0.5l of water from the boiler outlet (place a cup under the boiler outlet and then press either the 1 or 2 cup coffee button to deliver a coffee without using coffee powder).

Cleaning the milk container


Clean the milk container after each milk preparation, as described below:








1. Extract the lid.
2. Remove the milk spout tube and the intake tube (fig. 29).
3. Remove the froth regulator by pulling it out (fig. 30).
4. Carefully clean all components using hot water and a mild detergent. **All components can be washed in the dishwasher by positioning them on the upper rack of the dishwasher.** Pay particular attention that milk residues do not remain inside the holes and in the groove on the narrow part of the froth regulator.
5. Also check that the intake tube and the milk spout tube are not obstructed by milk residues.
6. Re-assemble the froth regulator, the milk spout tube and the milk intake tube.
7. Place the lid on the milk container.

Replacing the filter

After two months of duration (see calendar), or if the appliance is not used for 3 weeks, replace the filter as described in paragraph "Activation of the softener filter and filling of the tank" (page 9).

Descaling

Descal the machine when the light  flashes on the control panel. Proceed as follows:

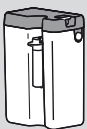
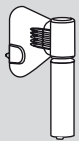


1. Remove the water filter. Fill the tank with the descaling solution obtained by diluting the descaler with water as indicated on the descaler pack.
2. Insert the hot water spout (fig. 8).
3. Place one container under the boiler outlet and one under the hot water spout (fig. 31) and ensure the drip tray is empty and correctly inserted.
4. Simultaneously press the  and  buttons: light  turns on (if the hot water spout has not been inserted, the light flashes).
5. Press the  button. Descaling is signaled by the LED that alternate in sequence. The descaling program automatically performs a series of deliveries from the boiler outlet and from the hot water spout at intervals, to remove the lime scale from inside the coffee machine.
6. Once the descaling solution is terminated, the light  turns on to indicate rinsing is necessary.
7. To eliminate the solution and lime scale residues, rinse the tank and fill it with fresh water (without descaler); empty the containers and place them under the boiler outlet and hot water spout.
8. Press the  button: rinsing starts and all LEDs flash in sequence.
9. Rinsing stops when the tank is empty: rinse and refill the tank.
10. Light  turns on: press the relative button: delivery starts and interrupts automatically.

The appliance is now ready for use.

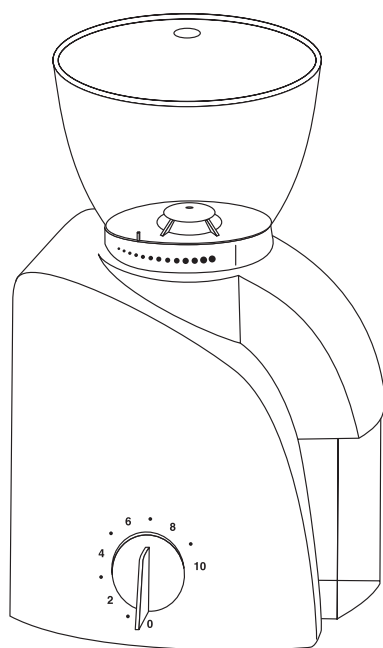
Repairs to the coffee machine relative to lime scale problems are not covered by the warranty if the descaling procedure described above is not performed on a regular basis.

Troubleshooting

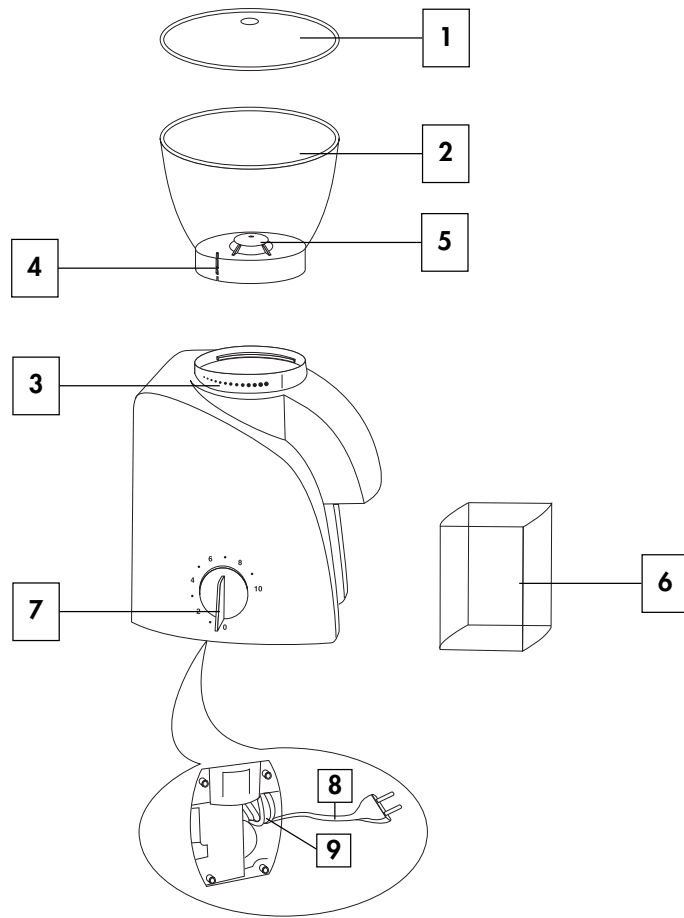
Problem	Possible causes	Solution
The device will not switch on	The power supply cable is not inserted correctly	Check that the power supply cable connector is fully inserted in the appropriate socket on the back of the device; then check that the plug is correctly connected to the power outlet
Espresso coffee does not flow out	No water in the tank	Fill the water tank
	The holes in the filter-holder are blocked	Clean the holes in the filter-holder spouts
	The espresso boiler outlet is blocked	Clean as indicated in the "Cleaning the boiler outlet" paragraph (page 13)
Espresso coffee drips from the edges of the filter-holder instead of through the holes	The filter-holder is not correctly inserted or is dirty	Attach the filter-holder correctly and handle to the right until aligned to the CLOSE position
	The espresso boiler gasket has lost elasticity or it is dirty	Have the espresso boiler gasket replaced at a service center
	The holes in the filter-holder spout are blocked	Clean the holes in the filter holder spouts
The filter-holder does not hook onto the device	Too much coffee was poured in the filter	Use the measure provided and make sure to use the correct filter for the type of preparation desired.
Loud pump noise	The water tank is empty	Fill the tank
	The tank is inserted incorrectly and the valve on the bottom is not open	Press the tank lightly to open the valve on the bottom
The coffee cream is clear (it flows quickly from the spout)	The ground coffee has not been sufficiently pressed	Increase pressing of the ground coffee
	Not enough ground coffee	Increase the amount of ground coffee
	The coffee is not ground finely enough	Only use coffee ground specifically for espresso coffee machines
	Incorrect type of ground coffee	Change the quality of the ground coffee
After coffee delivery, the coffee filter remains attached to the boiler outlet		Insert the filter-holder again, then remove it.
After the coffee has been prepared, the pod or coffee powder remains attached to the boiler outlet		Re-insert the filter-holder, deliver coffee, remove the filter-holder.

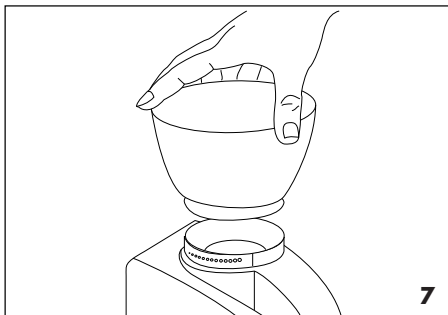
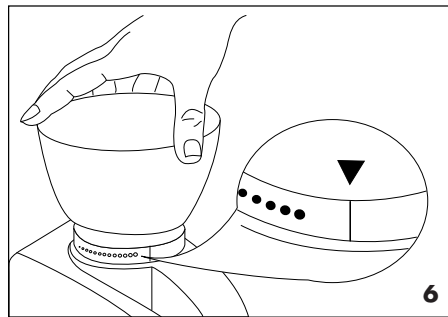
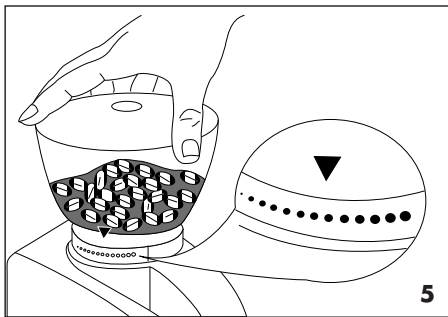
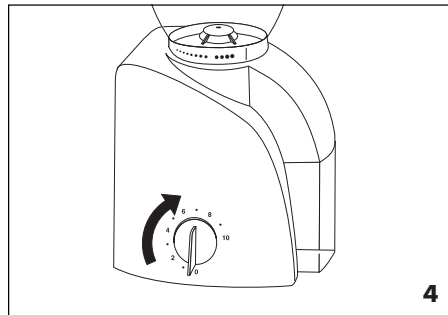
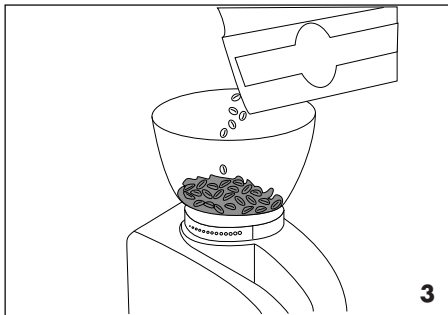
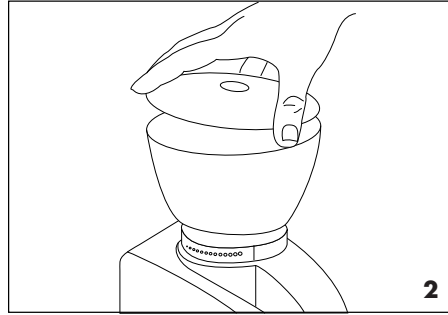
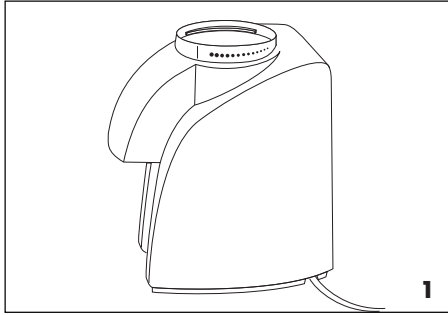
Problem	Possible causes	Solution
The coffee cream is dark (it flows slowly from the spout)	The ground coffee is too tightly pressed	Press the coffee less
	Large amount of ground coffee	Decrease the amount of ground coffee
	The espresso boiler outlet is blocked	Perform cleaning as indicated in the section "cleaning the boiler outlet" (page 13)
	The filter is blocked	Perform cleaning as indicated in the section "cleaning the filter" (page 13)
	The coffee is too finely ground	Only use coffee ground specifically for espresso coffee machines
	The ground coffee is too fine or is damp	Only use coffee ground specifically for espresso coffee machines and it must not be too damp
	Incorrect type of ground coffee	Change the quality of the ground coffee powder
 The milk does not froth when making a cappuccino	The milk is not cold enough	Always use milk at refrigerator temperature
	The cursor of the milk frother lid is not in correct position	Ensure the cursor is in the froth position
	The milk container lid is dirty	Clean the milk lid as described in the section "Cleaning the milk container" (page 13)
 The milk contains large bubbles and there is little froth.	The spout is dirty.	Clean as described in the section "Cleaning the spout after use".
The machine does not deliver any drink and the lights  and  flash for a few seconds.	No water in the tank	Fill the water tank
	The tank is inserted incorrectly and the valve on the bottom is not open	Press the tank lightly to open the valve on the bottom
	Incorrectly installed water filter	Activate the filter by following the indicated procedure
	The ground coffee is too tightly pressed	Press the coffee less
	The espresso boiler outlet is blocked	Perform cleaning as indicated in the section "cleaning the boiler outlet" (page 13)
	The filter is blocked	Perform cleaning as indicated in the section "cleaning the coffee filters"
The machine does not work and all lights flash		Immediately disconnect the appliance and contact an authorized service center

**MACINACAFFÉ
COFFE GRINDER
MOULIN À CAFÉ
KAFFEEMÜHLE
KOFFIEMOLEN
MOLINILLO DE CAFÉ
MOINHO DE CAFÉ
ΜΥΛΟ ΑΛΕΣΕΩΣ ΤΟΥ ΚΑΦΕ**



Istruzioni per l'uso
Instruction for use
Mode d'emploi
Bedienungsanleitung
Gebruiksaanwijzingen
Instrucciones para el uso
Instruções
ΟΔΗΓΙΕΣ ΧΡΗΣΗΣ





USING THE APPLIANCE FOR THE FIRST TIME

Read the instructions carefully. This is important for the correct use, safety and maintenance of the appliance.

Keep the instructions booklet for further reference.

IMPORTANT SAFETY MEASURES

- Before plugging in make sure that the voltage of your electricity supply is the same as that indicated on the characteristics plate.
- Clean the appliance only with a slightly dampened cloth.
- Should the appliance break or not function correctly, turn it off and do not tamper with it. For any repairs, contact the Technical Assistance Centre authorised by the manufacturer and request the use of original parts. Failure to respect the above could compromise the safety of the appliance.
- This appliance should only be used for its intended purpose. The manufacturer cannot be held responsible for any damage caused through incorrect, wrong or unreasonable use. In these cases the guarantee rights are null and void.
- Do not use the appliance if the supply cord is damaged.
- Never remove the plug from the socket by pulling the cord, or with wet hands.
- Children are not able to recognise the dangers connected with the use of electrical appliances: never leave children unsupervised near the appliance.
- Do not immerse the appliance in water.
- **Attention:** before cleaning, remove the plug.
- Do not let the supply cord hang over the edge of the table or worktop, or touch hot surfaces.

DESCRIPTION OF THE APPLIANCE

1. Lid
2. Coffee bean container
3. Grinding control
4. Indicator for the insertion/removal of coffee bean container
5. Internal cover
6. Ground coffee container
7. ON/OFF switch and grinding time control
8. Supply cord
9. Cord tidy

HOW TO USE YOUR COFFEE GRINDER

- Place the appliance on a flat surface.
- Pull out the length of cord required.
- Place the supply cord in the appropriate slot on the base of the appliance and plug into the socket.
- Remove the coffee bean container lid by lifting it off and fill the container with the desired quantity of coffee beans, up to a maximum of 250g.
- Replace the lid.
- Make sure that the ground coffee container is correctly positioned.
- Turn the ON/OFF knob to switch on the coffee grinder and rotate it clockwise to the time desired. If the control is fixed at 10 a quantity sufficient for about 10 cups will be ground. However, only use this ratio as a standard since the quantity will vary according to taste, the type and roasting of the coffee beans and the degree of grinding selected. The intermediate regulations of the quantity control represent the corresponding proportions.
- Regulate the grinding while the appliance is in use, so as to avoid the coffee beans blocking the grinding mechanism. The degrees of grinding are indicated on the regulator by a series of dots ranging from the smallest, indicating fine grinding, up to the largest, indicating a rougher grind.
You will discover the degree of grinding that suits your taste best through the use of the machine.
- The coffee grinder will stop automatically when the selected time ends. If you wish to interrupt the grinding before the selected time ends, turn the knob anti-clockwise until the appliance switches off.

RECOMMENDATIONS FOR USE

- Always keep the lid of the coffee bean container tightly closed so as to keep in all the flavour and aroma of the coffee beans.
- Only grind the quantity of coffee required.
- Never exceed the MAX level indicated on the ground coffee container so as to avoid the motor overheating.

CHARACTERISTICS OF THE SAFETY MOTOR PROTECTOR

Since large quantities of coffee are packed every day some tiny stones may accidentally be found, even among the finest coffee beans. The appliance is equipped with a safety motor protector against stones - or "friction clutch" - to avoid damage to the grinding mechanism. A stone in the grinding mechanism will cause a loud metallic noise. Turn the appliance off immediately, remove the plug from the socket, open the appliance as explained in the section "Cleaning" and remove the foreign body.

CLEANING

Take the plug out of the socket. Remove any beans remaining in the appropriate container and extract the latter by turning it in an anti-clockwise direction up to the stopping point (fig. 6). Lift the coffee bean container from its position (fig. 7). The ring nut for the grinding can therefore be removed from the machine. To clean the grinding mechanism a soft-bristle brush is ideal. Re-assemble the appliance by carrying out the above operation in reverse order, ensuring that the two tabs are correctly inserted into the appropriate slot. The structure of the coffee grinder and the transparent parts can be cleaned easily using a damp cloth.