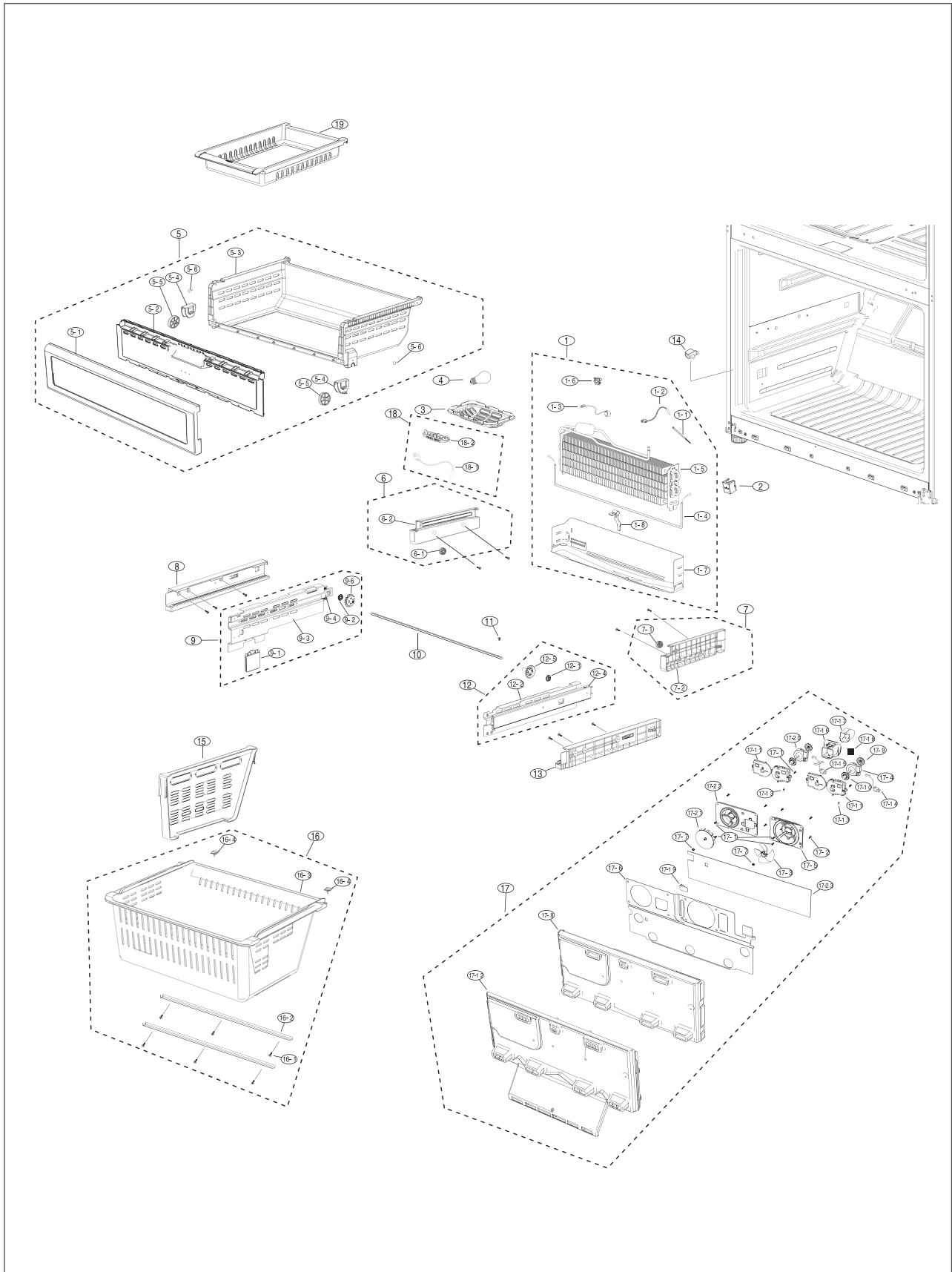


5 . EXPLODED VIEW& PARTS LIST

5-1) FREEZER	84
5-2) REFRIGERATOR	87
5-3) CABINET	91
5-4) DISASSEMBLY OF FREEZE DOOR	95
5-5) DISASSEMBLY OF REFRIGERATOR DOOR LEFT	98
5-6) DISASSEMBLY OF REFRIGERATOR DOOR RIGHT	101

EXPLODED VIEW & PARTS LIST

5-1) Freezer



EXPLODED VIEW & PARTS LIST

■ Parts List of Freezer

NO	CODE-NO	PART NAME	SPEC	QUAN TITY	REMARK
1	DA96-00459A	ASSY EVAP-FRE ICE	08AW-PJT,115V,2	1	
1-1	6501-000123	CABLE TIE	DACT140,W3.6,L146,NTR,NYLON66	3	
1-2	DA32-00027B	SENSOR TEMP	502AT,AW-PJT,-40~110?,5V,R-DEF-SENSOR,YEL,400MM	1	
1-3	DA47-00243R	THERMO BIMETAL-PROTECTOR	AW-PJT(F),BT-121-M, PW-5M1N,125 / 250V,10 / 5A,60?,40?,100M.Ø	1	
1-4	DA47-00244C	HEATER-METAL SHEATH	AW-PJT,240W,115V,55.1,F-ROOM	1	
1-5	DA59-00361A	EVAP-FRE ICE	PIN,115V,AW-PJT	1	
1-6	DA61-02901A	FIXER-SENSOR EVAP	CORE-PJT,PP,NTR	1	
1-7	DA61-04149A	PLATE-DRAIN FRE	AW-PJT(RF-267),GALVALUM,T0.3	1	
1-8	DA61-03644A	PLATE-EVAP HEATER	AL,T0.7	1	
2	DA63-02902B	COVER-FIXER HOUSING V	NEXT,GALVALUM,T0.3	1	
3	DA63-03420A	COVER-LAMP FRE	AW,GPPS,NTR	1	
4	4713-001223	LAMP-INCANDESCENT	120V,500mA,60W,47x84mm	1	
5	DA97-06260A	ASSY TRAY-FRE UPP	AW-PJT,BEST	1	
5-1	DA63-04115A	COVER-TRAY FRE UPP A	AW-PJT,HIPS	1	
5-2	DA63-03436A	COVER-TRAY FRE UPP B	AW-PJT,GPPS	1	
5-3	DA63-04114A	TRAY FRE-UPP	AW-PJT(BEST),HIPS(HF-1760SF)	1	
5-4	DA61-04154A	FIXER-ROLLER TRAY FRE UPP	AW-PJT,POM,1.8,NATURAL	2	
5-5	DA66-00554A	ROLL-TRAY FRE UPP	AW-PJT,POM,42.2,-,NATURAL,-,PVC COATING	2	
5-6	DA63-40167A	GROMMET-COVER CHIL	T3.0,SILICON	2	
5-7	DA66-10104A	ROLLER-FRE	POM,D22	2	
5-8	DA71-20145A	FIXER-ROLLER	PA	2	
6	DA97-06083A	ASSY RAIL-SLIDE UPP L	AW-PJT	1	
6-1	DA66-10104A	ROLLER-FRE	POM,D22	1	
6-2	DA61-04108A	RAIL-SLIDE UPP L	ABS WHITE	1	
7	DA97-06084A	ASSY RAIL-SLIDE UPP R	AW-PJT	1	
7-1	DA66-10104A	ROLLER-FRE	POM,D22	1	
7-2	DA61-04109A	RAIL-SLIDE UPP R	ABS, WHITE	1	
8	DA63-03414A	COVER-RAIL LOW L	AW-PJT,ABS,COOL WHITE	1	
9	DA97-04836A	ASSY RAIL-SLIDE LOW L	AW-PJT	1	
9-1	DA34-00047A	SWITCH PRESSURE	AW-PJT,HIPS,COOL WHITE	1	
9-2	DA61-03154A	FIXER-GEAR	AW-PJT,POM,NTR	1	
9-3	DA61-03156A	HANGER-RAIL LOW L	AW-PJT,SECC1,T2.0	1	
9-4	DA61-03158A	RAIL-SLIDE LOW L	AW-PJT,STS430	1	
9-5	DA61-03285A	HANGER-RIVET	AW-PJT,BSW2	3	
9-6	DA66-00436A	GEAR-L	AW-PJT,POM,NTR	1	
10	DA66-00437A	SHAFT-GEAR	AW-PJT,SM25C	1	
11	DA67-00859C	CAP-DOOR HANDLE	CORE,POM,INOX,SC-06034R	1	
12	DA97-04835A	ASSY RAIL-SLIDE LOW R	AW-PJT	1	
12-1	DA61-03154A	FIXER-GEAR	AW-PJT,POM,NTR	1	
12-2	DA61-03157A	HANGER-RAIL LOW R	AW-PJT,SECC1,T2.0,COOL	1	
12-3	DA61-03285A	HANGER-RIVET	AW-PJT,BSW2	3	
12-4	DA61-03333A	RAIL-SLIDE LOW R	AW-PJT,STS430	1	
12-5	DA66-00435A	GEAR-R	AW-PJT,POM,NTR	1	
13	DA63-03415A	COVER-RAIL LOW R	AW-PJT,ABS,COOL WHITE	1	
14	DA34-10120E	SWITCH DOOR-F	slide,250V,0.5A,cool white	1	
15	DA61-03416A	GUIDE-DRAWER BOX	AW-PJT,PP,COOL WHITE	2	
16	DA97-06258A	ASSY TRAY-DRAWER BOX	AW-PJT	1	
16-1	6002-000213	SCREW-TAPPING	TH,+,-,1,M4,L12,ZPC(WHT)	6	
16-2	DA61-03160A	REINF-DRAWER BOX	AW-PJT,SHP1,T2.6,BL	2	
16-3	DA63-04116A	TRAY-DRAWER BOX	AW-PJT,PP,COOL WHITE	1	
16-4	DA63-04313A	GROMMET-TRAY DRAWER BOX	SILICON	2	
17	DA97-05343B	ASSY COVER-EVAP FRE ICE	AW-PJT(RF267,GE)	1	

EXPLODED VIEW & PARTS LIST

5-2) Refrigerator



EXPLODED VIEW & PARTS LIST

■ Parts List of Refrigerator

NO	CODE-NO	PART NAME	SPEC	QUAN TITY	REMARK
1	DA96-00461A	ASSY EVAP-REF	AW-PJT(BEST,GE),115V/120W	1	
1-1	6501-000123	CABLE TIE	DACT140,W3.6,L146,NTR,NYLON66	4	
1-2	DA32-00027B	SENSOR ASSY	PX41C,502AT,AW-PJT,40~110,5V,RDEF SENSOR,YEL,400MM	1	
1-3	DA47-00243S	THERMO BIMETAL-PROTECTOR	AW-PJT(R),BT-121-M,PW-5M1N,125 / 250V,10 / 5A,60?,40?,100M.Ø	1	
1-4	DA47-00244D	HEATER-METAL SHEATH	AW-PJT,120W,115V,110.2?,RROOM	1	
1-5	DA59-00357B	EVAP REF	AW-PJT	1	
1-6	DA61-03683A	FIXER-SENSOR	ATOP,EVAP,PP,NTR,ALL	1	
1-7	DA61-04148A	PLATE-DRAIN REF	AW-PJT(08),GALVANUME,T0.3	1	
1-8	DA61-03644A	PLATE-EVAP HEATER	AL,T0.7	1	
2	DA63-02902B	COVER-FIXER HOUSING,V	NEXT,GALVALUM,T0.3	1	
3	DA97-06197A	ASSY COVER-EVAP REF	AW-PJT(BEST)	1	
3-1	6002-000213	SCREW-TAPPING	TH,+,1,M4,L12,ZPC(WHT),SWRCH18A	3	
3-2	6002-000215	SCREW-TAPPING	TH,+,1,M4.0,L16,ZPC(WHT),SWRCH18A	4	
3-3	DA31-00124A	FAN-AX100W4CC-T1	TD-PJT,ABS	1	
3-4	DA31-00146C	MOTOR BLDC	2950,DC12V,150mA,2.1W,MOTORBLDC	1	
3-5	DA96-00042J	WIRE HARNESS-MOTOR	AW-PJT,R-Fan/ F-Fan	1	
3-6	DA61-03181A	CASE-MOTOR REF	AW-PJT,BUBBLE PP,NTR	1	
3-7	DA61-03182A	GUIDE-INS EVAP REF	AW-PJT,ABS,NTR	2	
3-8	DA61-03186A	PLATE-INS EVAP REF	AW-PJT,GALVANUME,T0.4	1	
3-9	DA61-20128A	SPRING ETC-FAN	STS304,PI7.8,OD1.0,FD	1	
3-10	DA62-01760A	INSULATION-EVAP REF	SAMSUNG 08,FOAM-PS,33 MAGNIFICATION	1	
3-11	DA62-01382A	INSULATION-EVAP REAR	AW-PJT,FOAMPS	1	
3-12	DA62-01383A	INSULATION-EVAP SUB	AW-PJT,FOAMPS	2	
3-13	DA62-01423A	INSULATION-EVAP DUCT	AW-PJT,FOAMPS,T20,W44.5,L45	2	
3-14	DA63-01146A	GROMMET-MOTOR,REAR	ATOP,NBR,ID6.5,OD42,BLK,BLDC	1	
3-15	DA63-01808A	GROMMET-MOTOR,FRONT	BLDC,NBR,BLACK,H20	1	
3-16	DA63-01809A	COVER MOTOR-BLDC	BLDCNEW,PP,NTR,BJ730	1	
3-17	DA63-04139A	COVER-EVAP REF	AW-PJT(SAMSUNG 08),PP,COOL-WHITE(SC-02740R)	1	
3-18	DA63-40167A	GROMMET-COVER CHIL	T3.0,SILICON,NTR	1	
3-19	DA64-02065A	TRIM-COVER EVAP REF	AW-PJT,ABS,COOL-WHITE	1	
3-20	DA61-03599A	PLATE-HOUSING REF	GALVALUME,T0.3	1	
3-21	DA32-10150X	SENSOR-ASSY	YEL,500MM	1	
4	DA97-04842E	ASSY CASE LAMP-REF	AW(GE 08)-PJT	1	
4-1	DA61-03163A	CASE-LAMP REF	AW,HIPS,COOL WHITE	1	
4-2	DA61-03169A	PLATE LAMP REF	AW,SBHG1,T0.4	1	
4-3	DA47-40001D	LAMP HOLDER ASSY	E26,250V,660W,TE5006F	2	
4-4	DA47-00243D	THERMO BIMETAL PROTECTOR	AW-PJT(R-Lamp),BT-121-M,PW-5M1N,125 / 250V,10 / 5A,60?,40?,100M.Ø	1	
5	DA63-03773A	COVER-LAMP REF	AW,PC,CRYSTAL	1	
6	4713-001223	LAMP INCANDESCENT	120V,500mA,60W,47x84mm	2	
7	DA61-03180A	ANGLE-SHELF REF SIDE	AW,SECC1,T2.0,COOL-WHITE	1	
8	DA97-05545A	ASSY ANGLE SHELF REF	AW,SECC1,T2.0,COOL-WHITE	1	
9	DA67-01688A	CAP-ANGLE	AW-PJT,HIPS,COOL-WHITE	1	
10	DA97-04896A	ASSY SHELF GLASS REF SLIDE		2	
10-1	DA67-01607A	SHELF GLASS REF SLIDE	PP+GLASS,COOL WHITE	1	
10-2	DA97-04870A	ASSY SHELF HANGER SLIDE		1	
11	DA97-05382A	ASSY COVER-VEG	AW-PJT	1	
11-1	6002-000213	SCREW-TAPPING	TH,+,1,M4,L12,ZPC(WHT),SWRCH18A	4	
11-2	DA01-00400B	GLASS-COVER VEG	756*343,T3.2,1°Δ PRINT	1	
11-3	DA61-03166A	FIXER-COVER VEG	AW,HIPS,COOL-WHITE	2	
11-4	DA61-03173A	REINF-COVER VEG	AW-PJT,SHP1,T2.9,BLACK	1	
11-5	DA63-03761A	COVER-VEG REF	AW,HIPS,COOL-WHITE	1	
11-6	DA64-00817A	KNOB-HUMIDITY	QUEEN,ABS	2	

EXPLODED VIEW & PARTS LIST

■ Parts List of Refrigerator

NO	CODE-NO	PART NAME	SPEC	QUAN TITY	REMARK
11-7	DA66-00438A	LEVER-HUMIDITY	AW,HIPS,COOL-WHITE	2	
11-8	DA66-10104A	ROLLER-FRE	POM,D22	2	
12	DA97-04839A	ASSY RAIL-VEG L	AW-PJT	1	
12-1	DA61-03172A	RAIL-VEG L	AW,HIPS,COOL-WHITE	1	
12-2	DA66-10104A	ROLLER-FRE	POM,D22	1	
13	DA97-04840A	ASSY RAIL-VEG R	AW-PJT	1	
13-1	DA61-03177A	RAIL-VEG R	AW,HIPS,COOL-WHITE	1	
13-2	DA66-10104A	ROLLER-FRE	POM,D22	1	
14	DA97-04846A	ASSY CASE-VEG REF	AW-PJT	1	
14-1	DA61-03165A	CASE-VEG REF	AW,SAN,NTR	1	
14-2	DA63-03426A	COVER-VEG FRONT	AW,HIPS,COOL-WHITE	1	
14-3	DA66-10104A	ROLLER-FRE	POM,D22	2	
14-4	DA71-20145A	FIXER-ROLLER	PA	2	
15	DA97-05381A	ASSY CASE-VEG REF R		1	
15-1	DA61-03652A	CASE VEG REF R	SAN,NTR	1	
15-2	DA63-03760A	COVER VEG FRONT R	HIPS,COOL WHITE	1	
15-3	DA66-10104A	ROLLER FRE	POM	2	
15-4	DA71-20145A	FIXER ROLLER	PA	2	
16	DA97-05465A	ASSY-PARTITION VEG		1	
17	DA97-05033D	ASSY-COVER WATER TANK	AW-PJT	1	
17-1	6002-000213	SCREW-TAPPING	TH,+,1,M4,L12,ZPC(WHT),SWRCH18A	2	
17-2	DA63-03449A	COVER-TANK WATER	AW-PJT,PP,COOL-WHITE	1	
17-3	DA97-02650G	ASSY TANK WATER		1	
17-4	DA63-03843A	COVER HEATER WATER TANK	PP(BJ-730)	1	
17-5	DA47-00264A	HEATER WATER TANK	3W,DC 12V,48.0 \varnothing	1	
18	DA97-05383C	ASSY COVER-SLIDE PANTRY	AW-PJT BEST	1	
18-1	DA63-40167A	GROMMET-COVER SLIDE	T3.0,SILICON,NTR	2	
18-2	DA63-03764A	COVER-SLIDE PANTRY A	AW,GPPS,NTR	1	
18-3	DA63-03765A	COVER-SLIDE PANTRY B	AW,HIPS,COOL WHITE	1	
19	DA97-05370A	ASSY SHELF-PANTRY	AW-PJT	1	
19-1	DA61-03174A	REINF-SHELF PANTRY	AW-PJT,SECC1,T1.2,COOL WHITE	1	
19-2	DA67-01781A	SHELF-PANTRY	HIPS,COOL WHITE	1	
19-3	DA64-02235A	WINDOW SHELF PANTRY	GPPS,NTR	2	
20	DA97-06324A	ASSY COVER-MOTOR DAMPER	AW-PJT	1	
20-1	DA31-00071C	DAMPER MOTOR	DC12V,600mA,BBC-PJT	1	
20-2	DA32-00006R	SENSOR TEMP-PANTRY	PX-41C,502AT,AW-PJT	1	
20-3	DA62-01380A	INSULATION-MOTOR DC DAMPER	AW-PJT,FOAMPS,NTR	1	
20-4	DA63-04274A	COVER-MOTOR DC DAMPER	AW2-PJT,PP,COOL WHITE	1	
21	DA61-03202A	GUIDE-FRENCH	AW-PJT,POM,COOL-WHITE(SC02740R)	1	
22	DA63-03685B	COVER-WATER FILTER	AW-PJT,HIPS,COOL-WHITE	1	
23	DA97-01666Y	ASSY CASE-FILTER	AW-PJT	1	
24	DA61-03167A	GUIDE-PANTRY	AW,PP,COOL-WHITE	1	
25	DA97-05371B	ASSY COVER-RAIL PANTRY L	AW-PJT(BEST,GE)	1	
25-1	DA61-03176A	SUPPORT-ROLLER PANTRY	AW-PJT,NBR,NTR	1	
25-2	DA63-03762A	COVER-RAIL PANTRY L	AW,HIPS,COOL-WHITE	1	
25-3	DA97-05297B	ASSY ROLLER B	AW-PJT,Ni-Zn	1	
26	DA97-04847D	ASSY CASE-PANTRY	AW-PJT,COOL WHITE,ROLLER(Ni-Zn)	1	
26-1	6002-000213	SCREW-TAPPING	TH,+,1,M4,L12,ZPC(WHT),SWRCH18A	6	
26-2	DA61-03164A	CASE-PANTRY	AW,HIPS,COOL-WHITE	1	
26-3	DA97-05296B	ASSY ROLLER A	AW-PJT,Ni-Zn	2	
26-4	DA97-04837A	ASSY RAIL-PANTRY L	AW-PJT	1	
26-5	DA97-04838A	ASSY RAIL-PANTRY R	AW-PJT	1	

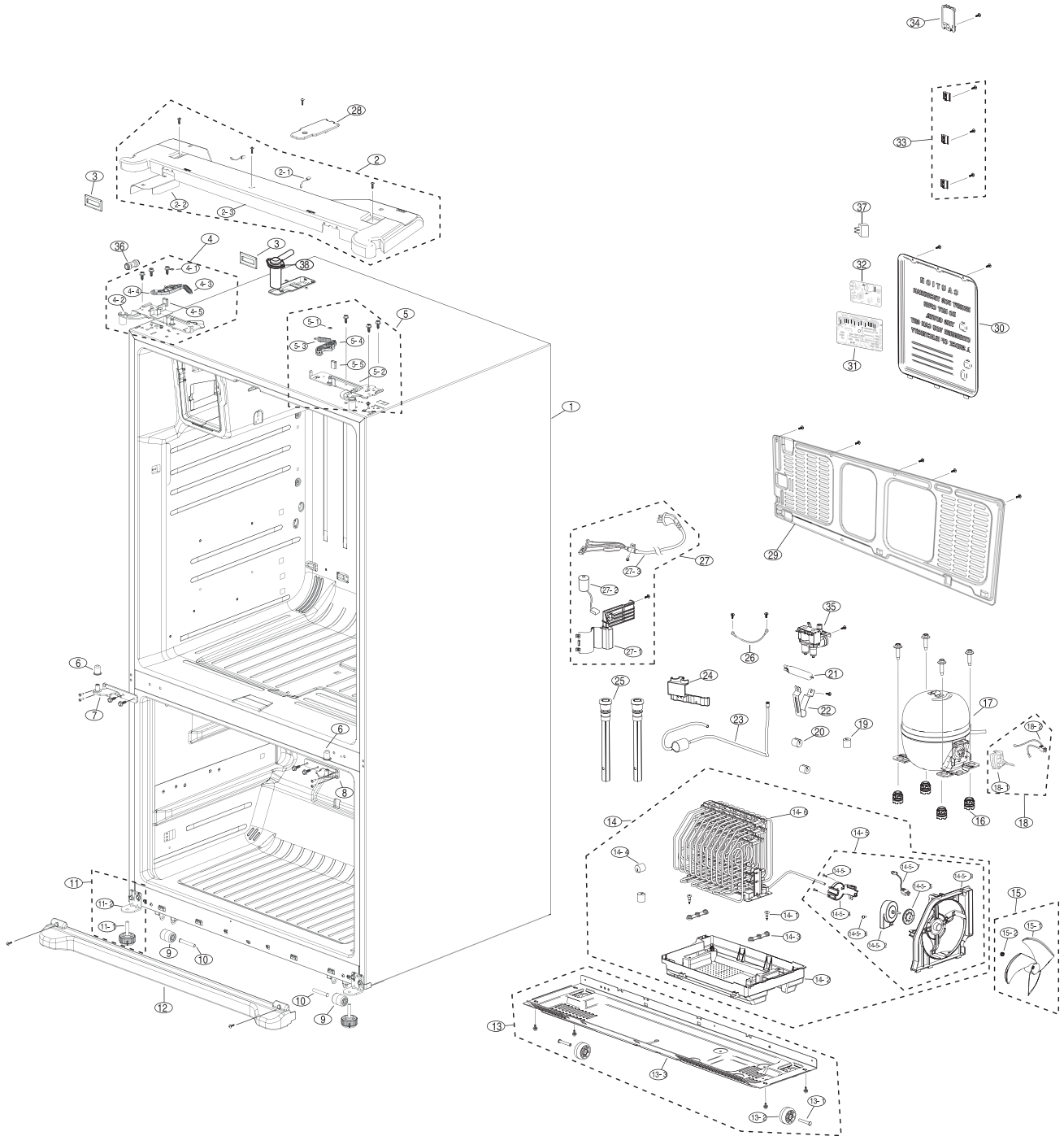
EXPLODED VIEW & PARTS LIST

■ Parts List of Refrigerator

NO	CODE-NO	PART NAME	SPEC	QUAN TITY	REMARK
27	DA97-05384C	ASSY COVER-RAIL PANTRY R	AW-PJT(BEST)	1	
27-1	6002-000630	SCREW-TAPPING	PH,+2S,M3,L8,ZPC(WHT),SWRCH18A	1	
27-2	DA41-00423C	PBA PANEL-PANTRY		1	
27-3	DA64-02246C	INLAY-CONTROL PANEL	AW BEST,PC	1	
27-4	DA61-03176A	SUPPORT-ROLLER PANTRY	AW-PJT,NBR,NTR	1	
27-5	DA63-03763A	COVER-RAIL PANTRY R	AW,HIPS,COOL-WHITE	1	
27-6	DA97-05297B	ASSY ROLLER B	AW-PJT,Ni-Zn	1	
28	DA61-03175A	SUPPORT-PANTRY	AW,PP,COOL-WHITE	1	
29	DA29-00003B	FILTER WATER-ASSY	ATOP,86*86*167,NSF53	1	
30	DA97-05240A	ASSY SHELF REF FOLD		1	
31	DA97-05359A	ASSY SHELF QUICK SPACE		1	
31-1	6002-001397	SCREW TAPPING		6	
31-2	DA01-00422A	GLASS SHELF QUICK SPACE A	W361.5,L206.5,T3.2	1	
31-3	DA01-00428A	GLASS SHELF QUICK SPACE B	W340,L207,T3.2	1	
31-4	DA67-01778A	SHELF QUICK SPACE A	ABS(HG-0760)	1	
31-5	DA67-01779A	SHELF QUICK SPACE B	ABS(HG-0760)	1	
31-6	DA91-02545A	ASSY HANGER QUICK SPACE		1	
32	DA61-03591A	ANGLE-SHELF REF SIDE L		1	
33	DA97-05239A	ASSY-TRAY ICE BUCKET		1	
33-1	DA63-03687A	COVER-ICE BUCKET A	AW-PJT,HIPS,T2.5,WHT,187*266*120	1	
33-2	DA62-01475A	INSULATION-COVER ICE BUCKET	AW-PJT,EPS,40,182,261,WHT,	1	
33-3	DA63-03737A	GASKET-COVER ICE BUCKET	AW-PJT,SILICONE,1.0,730,GRAY,OD5.0	1	
33-4	DA63-03686A	COVER-CRUSHER	AW-PJT,HIPS,T3,WHT,140*140*55	1	
33-5	DA62-01569A	INSULATION-COVER ICE BUCKET-SUB	AW-PJT,EPS,20,30,115,WHT,	1	
33-6	DA61-03505A	GUIDE-CRUSHER	AW-PJT,HIPS,T3,WHT,48*96*60	1	
33-7	DA66-00476A	LEVER-ICE BUCKET B	AW-PJT,ABS,13,40,67,-,WHT,-	1	
33-8	DA61-03506A	SPRING ETC-COVER BUCKET	AW-PJT,STS304,?1.2,ID 9.6,OD12,25,	1	
33-9	DA66-00477A	LEVER-ICE BUCKET C	AW-PJT,ABS,13,40,115,-,WHT,-	1	
33-10	DA63-03688A	COVER-ICE BUCKET B	AW-PJT,HIPS,T2,WHT,181*266*40	1	
33-11	DA66-00475A	LEVER-ICE BUCKET A	AW-PJT,ABS,T2.0,WHT,15*50*11	1	
33-12	DA67-01719A	CAP-LEVER ICE BUCKET	AW-PJT,ABS,T1.0,WHT,?9.8*6	1	
33-13	DA65-00046A	CLAMPER CORE-HELIX	AW-PJT,POM,?80,L440,WHT,INSERT : CLAMPER CORE	1	
33-14	DA63-03689A	TRAY-ICE BUCKET	AW-PJT,ABS,T2.5,WHT,138*165*410	1	
33-15	DA61-20124D	SPRING ETC-DISPENSER	AW-BEST-GE-OEM,STS304,0.9,9	1	
33-16	DA66-00478A	LEVER-CUBE	AW-PJT,MSWR10,?4.5,L550,	1	
34	DA97-05422A	ASSY ICE MAKER		1	
35	DA97-05246A	ASSY-CASE AUGER MOTOR		1	
35-1	DA61-03517A	CASE-AUGER MOTOR	AW-PJT,HIPS(HR-1360),COOL-WHT(SC-02740R),	1	
35-2	DA31-00105E	MOTOR GEARED-AUGER	ISG3240SSI,18RPM,127Kgf.cm,192:1,110~127V,2.3A,40T	1	
35-3	DA74-40151G	VALVE-SOLENOID	SR-S6586B,CUBE-SN1,110-127[V]42*γ	1	
35-4	DA63-90008A	BUSH-SOLENOID	POM,SC-93438R,-	1	
35-5	DA66-90003A	GEAR-SOLENOID	POM,SC-93438R	1	
35-6	DA61-60001A	SLIDER-SOLENOID DISP	POM,	1	
35-7	DA61-01659B	PLATE-DRIVE AUGER	NEXT-PJT,STS304,T2.5	1	
35-8	DA71-00163A	FIXER-NUT	ZIPEL,STS420,T1,CLIP,STS420-J2	1	
35-9	DA96-00036N	ASSY-WIRE HARNESS SUB(EM)	AW-PJT,W/H EJECT MOTOR	1	
35-10	DA32-00011U	SENSOR TEMP	PX-41C,AW-PJT,-40-110?.5V,F-SENSOR,YEL,100MM	1	
35-11	DA63-02012B	COVER-MOTOR AUGER SUB	A-TOP,ABS≥φ NTR,NTR,-	1	
36	DA63-03691A	COVER HARNESS ICE ROOM	HIPS(HR-1360)	1	
37	DA34-00033B	SWITCH DOOR	SLIDE,250V/125V	1	

EXPLODED VIEW & PARTS LIST

5-3) Cabinet



EXPLODED VIEW & PARTS LIST

■ Parts List of Cabinet

NO	CODE-NO	PART NAME	SPEC	QUAN TITY	REMARK
1	DA90-03870A	ASSY CABINET FORM	AW-PJT, BLACK	1	
1	DA90-03870B	ASSY CABINET FORM	AW-PJT, REAL-STS	1	
1	DA90-03870C	ASSY CABINET FORM	AW-PJT, SNOW-WHITE	1	
1	DA90-03870E	ASSY CABINET FORM	RF26VABSH-, PLATINUM STS, 115/60	1	
2	DA97-05390A	ASSY-TOP TABLE	AW-PJT, HIPS, i-BLACK(SC-00477R)	1	
2-1	DA34-00043B	SWITCH REED-ASSY	200VDC, 1.5A,	2	
2-2	DA61-04051A	PLATE-TOP TABLE	AW-PJT, SBHG1, T0.3, 65.5, 107, -, AW-BESTÄ	1	
2-3	DA64-02256A	TOP TABLE	AW-PJT, ABS(VH0815), i-BLACK(SC-00477R)	1	
2	DA97-05390B	ASSY-TOP TABLE	AW-PJT, HIPS, Creamy STS(SC-07009R)	1	
2-1	DA34-00043B	SWITCH REED-ASSY	200VDC, 1.5A,	2	
2-2	DA61-03678A	PLATE-TOP TABLE	AW-PJT, SBHG1, T0.3,	1	
2-3	DA64-02256B	TOP TABLE	AW-PJT, ABS(VH0815), Creamy STS(SC-07009R)	1	
2	DA97-05390C	ASSY-TOP TABLE	AW-PJT, HIPS, Snow-White(SC-97527R)	1	
2-1	DA34-00043B	SWITCH REED-ASSY	200VDC, 1.5A,	2	
2-2	DA61-03678A	PLATE-TOP TABLE	AW-PJT, SBHG1, T0.3,	1	
2-3	DA64-02256C	TOP TABLE	AW-PJT, ABS(VH0815), Snow-White(SC-97527R)	1	
3	DA67-01613A	CAP-TOP TABLE	AW-PJT, ABS, i-BLACK(SC-00477R)	2	
3	DA67-01613B	CAP-TOP TABLE	AW-PJT, ABS, Creamy STS(SC-07009R)	2	
3	DA67-01613C	CAP-TOP TABLE	AW-PJT, ABS, Snow-White(SC-97527R)	2	
4	DA97-04874H	ASSY HINGE UPP-L	AW-PJT, T2.9, BLACK	1	
4-1	DA60-00162A	FASTENER-RING	AW-PJT, STS304, ID5, T0.5, OD11, BLACK,	1	
4-2	DA61-03239A	HINGE-UPP L	AW-PJT, SHP1, T2.9,	1	
4-3	DA61-03301B	SPRING ETC-AUTO CLOSE	AW-PJT, STS304, 1.4, 9.2, 12, 20	1	
4-4	DA97-04903A	ASSY LEVER-AUTO CLOSE	AW-PJT, POM, i-BLACK	1	
4-5	DA63-03673A	GROMMET-LEVER	AW-PJT, NBR, BLACK	1	
4-6	DA61-03677A	FIXER WATER PIPE HINGE	AW-PJT, SHP1, T1.2		
4	DA97-04874J	ASSY HINGE UPP-L	AW-PJT, T2.9, Creamy-STS	1	
4-1	DA60-00162A	FASTENER-RING	AW-PJT, STS304, ID5, T0.5, OD11, BLACK,	1	
4-2	DA61-03239A	HINGE-UPP L	AW-PJT, SHP1, T2.9,	1	
4-3	DA61-03301B	SPRING ETC-AUTO CLOSE	AW-PJT, STS304, 1.4, 9.2, 12, 20	1	
4-4	DA97-04903B	ASSY LEVER-AUTO CLOSE	AW-PJT, POM, Creamy-STS	1	
4-5	DA63-03673A	GROMMET-LEVER	AW-PJT, NBR, BLACK	1	
4-6	DA61-03677A	FIXER WATER PIPE HINGE		1	
4	DA97-04874K	ASSY HINGE UPP-L	AW-PJT, T2.9, Snow-White	1	
4-1	DA60-00162A	FASTENER-RING	AW-PJT, STS304, ID5, T0.5, OD11, BLACK,	1	
4-2	DA61-03239A	HINGE-UPP L	AW-PJT, SHP1, T2.9,	1	
4-3	DA61-03301B	SPRING ETC-AUTO CLOSE	AW-PJT, STS304, 1.4, 9.2, 12, 20	1	
4-4	DA97-04903C	ASSY LEVER-AUTO CLOSE	AW-PJT, POM, Snow-White	1	
4-5	DA63-03673A	GROMMET-LEVER	AW-PJT, NBR, BLACK	1	
4-6	DA61-03677A	FIXER WATER PIPE HINGE		1	
5	DA97-04875A	ASSY HINGE UPP-R	AW-PJT, T2.9, i-BLACK	1	
5-1	DA60-00162A	FASTENER-RING	AW-PJT, STS304, ID5, T0.5, OD11, BLACK,	1	
5-2	DA61-03240A	HINGE-UPP R	AW-PJT, SHP1, T2.9,	1	
5-3	DA61-03301A	SPRING ETC-AUTO CLOSE	AW-PJT, STS604, 1.4, 9.2, 12, 24,	1	
5-4	DA97-04903A	ASSY LEVER-AUTO CLOSE	AW-PJT, POM, i-BLACK	1	
5-5	DA63-03673A	GROMMET-LEVER	AW-PJT, NBR, BLACK	1	
5	DA97-04875B	ASSY HINGE UPP-R	AW-PJT, T2.9, Creamy-STS	1	
5-1	DA60-00162A	FASTENER-RING	AW-PJT, STS304, ID5, T0.5, OD11, BLACK,	1	
5-2	DA61-03240A	HINGE-UPP R	AW-PJT, SHP1, T2.9,	1	
5-3	DA61-03301A	SPRING ETC-AUTO CLOSE	AW-PJT, STS604, 1.4, 9.2, 12, 24,	1	
5-4	DA97-04903B	ASSY LEVER-AUTO CLOSE	AW-PJT, POM, Creamy-STS	1	
5-5	DA63-03673A	GROMMET-LEVER	AW-PJT, NBR, BLACK	1	

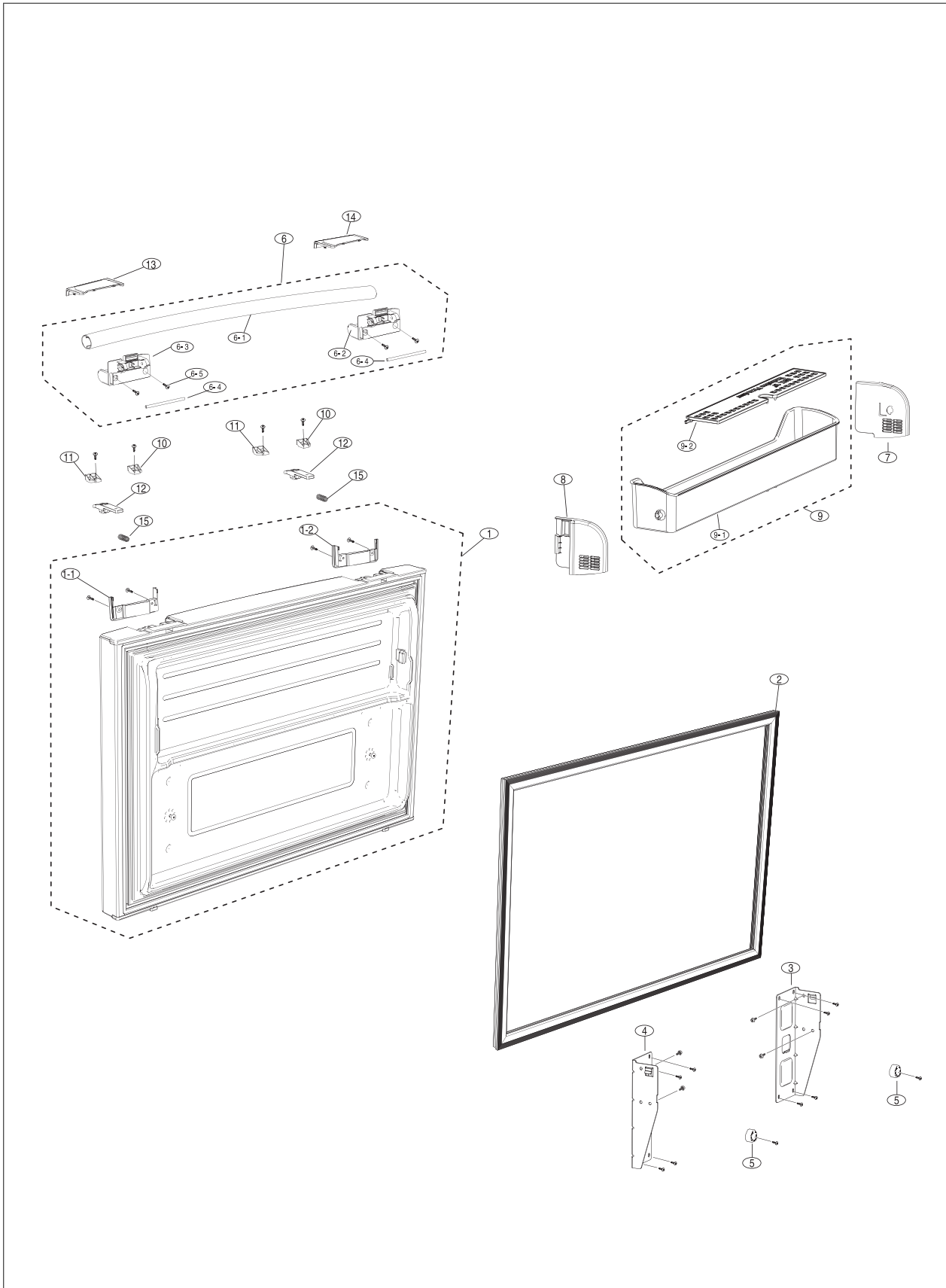
EXPLODED VIEW & PARTS LIST

■ Parts List of Cabinet

NO	CODE-NO	PART NAME	SPEC	QUAN TITY	REMARK
5	DA97-04875C	ASSY HINGE UPP-R	AW-PJT,T2.9,Snow-White	1	
5-1	DA60-00162A	FASTENER-RING	AW-PJT,STS304,ID5,T0.5,OD11,BLACK,	1	
5-2	DA61-03240A	HINGE-UPP R	AW-PJT,SHP1,T2.9,	1	
5-3	DA61-03301A	SPRING ETC-AUTO CLOSE	AW-PJT,STS604,1.4,9.2,12,24,	1	
5-4	DA97-04903C	ASSY LEVER-AUTO CLOSE	AW-PJT,POM,Snow-White	1	
5-5	DA63-03673A	GROMMET-LEVER	AW-PJT,NBR,BLACK	1	
6	DA63-02905A	GROMMET HINGE-MID,R	NEXT,POM,T2.0,WHITE,	2	
7	DA97-04876B	ASSY HINGE MID-L	AW-PJT,T4.5,Ni-Cr	1	
8	DA97-04877B	ASSY HINGE MID-R	AW-PJT,T4.5,Ni-Cr	1	
9	DA61-40115B	CASTER-FRONT	SR-50,PP	1	
10	DA61-01920A	CASTER-RIVET	(ZPC2),MSWR10,OD8.0,L54	1	
11	DA97-05016A	ASSY-SUPPORT FOOT FRONT	AW-PJT	2	
11-1	DA61-00805C	FOOT-FRONT	AW-PJT,PP	1	
11-2	DA61-03217A	SUPPORT-FOOT FRONT	AW-PJT,SHP1,T4.0,BLACK	1	
12	DA63-03434A	COVER-LEG FRONT	AW-PJT,PP,i-BLACK	1	
12	DA63-03434B	COVER-LEG FRONT	AW-PJT,PP,Creamy-STS	1	
12	DA63-03434C	COVER-LEG FRONT	AW-PJT,PP,Snow-White	1	
13	DA97-02064B	ASSY CHASSIS-COMP	AD,NEXT,SBHG1,T1.4,	1	
13-1	DA60-90146A	PIN-CASTER	MSWR10,OD6.0,L40,ZPC2,SR2894	2	
13-2	DA61-40126B	CASTER-REAR	REFALL,PP,PI 44,NTR,W22,	2	
13-3	DA64-01170A	CHASSIS COMP	AD,SBHG1,T1.4,	1	
14	DA97-05043B	ASSY TRAY-DRAIN WATER	AW-PJT,	1	
14-1	6009-001252	SCREW-SPECIAL	PH,+,M4.0,L20(12),ZPC(WHT),SWRCH18A	2	
14-2	DA63-03450A	TRAY-DRAIN WATER	AW-PJT,PP,NTR,	1	
14-3	DA63-40128A	GROMMET-SUB COND	,NBR,DARKGRAY	2	
14-4	DA63-40171B	GROMMET-SUCT PIPE A	,NBR,OD20,ID4,L20,BLK	2	
14-5	DA97-03145K	ASSY SUPPORT-CIRCUIT MOTOR	NEXT,	1	
14-5-1	6003-000003	SCREW-TAPTITE	BH,+,B,M4,L10,ZPC(BLK),SWRCH18A,	2	
14-5-2	DA31-00146D	MOTOR BLDC	,1500,DC12V,250mA,2.5W,MOTORBLDC,	1	
14-5-3	DA61-02349B	SUPPORT-CIRCUIT MOTOR	NEXT,ABS,NTR,	1	
14-5-4	DA61-02355B	BRACKET-CIRCUIT MOTOR	ABS,NEXT,NTR	1	
14-5-5	DA63-01146A	GROMMET-MOTOR,REAR	A-TOP,NBR,ID6.5,OD42,BLK,BLDC	1	
14-5-6	DA63-40167A	GROMMET-COVER CHIL	T3.0,SILICON,NTR	1	
14-5-7	DA96-00042A	ASSY-HARNESS MOTOR	ATOP UL(MOTOR),CFAN,350MM	1	
14-6	DA97-05093A	ASSY PIPE-SPIRAL COND	AW-PJT,	1	
15	DA31-00010D	FAN-ASSY	,ET,ZIPEL,ASSY,UNIT,?150	1	
15-1	DA31-00015C	FAN-TURBO	,ET-PJT,ABS+GLASS FIBE,GR4010	1	
15-2	DA61-20128A	SPRING ETC-FAN	,STS304,PI7.8,OD1.0,FD	1	
16	DA63-02017A	GROMMET-COMP	QUEEN,EPDM,	4	
17	MK172DR2U/E09	COMPRESSOR	115-127V-60HZ,RSCR,FAN	1	
18	DA97-02895K	ASSY-COMP SUB	AW-PJT		
18-1	DA96-00174E	ASSY-HARNESS COMP	AW-PJT(GE-OEM),AWG #18	1	
18-2	DA35-00008X	RELAY PROTECTOR O/L	2000S501,4TM435RFBYY,S/T:16.5A,U/T:4.28A,135,61	1	
18-3	DA35-00103B	RELAY-PTC THERMISOR	PTH1M100MD3	1	
19	DA63-40171B	GROMMET-SUCT PIPE A	,NBR,OD20,ID4,L20,BLK	1	
20	DA63-40171D	GROMMET-SUCT PIPE B	RAIL L19.5,NR,OD20,ID6,BLK	2	
21	DA62-01514A	DRYER	REF-ALL,C1220T,OD18.70,L114	1	
22	DA61-02657A	CLIP-DRYER	AD,SECC1,T0.4,	1	
23	DA97-06085A	ASSY PIPE CONNECT-SUCTION	aw,c1220 t	1	
24	DA61-02434A	FIXER-HOSE(VALUE)	ET05-PJT,PP,T2	1	
25	DA97-04049A	ASSY CAP-DRAIN	EPEL,ASSY,L224.5,SOFTPVC	2	
26	DA39-20389L	WIRE HARNESS-EARTH	GREENYEL,UL 1015 AWG18,150mm	1	

EXPLODED VIEW & PARTS LIST

5-4) Disassembly of Freeze Door



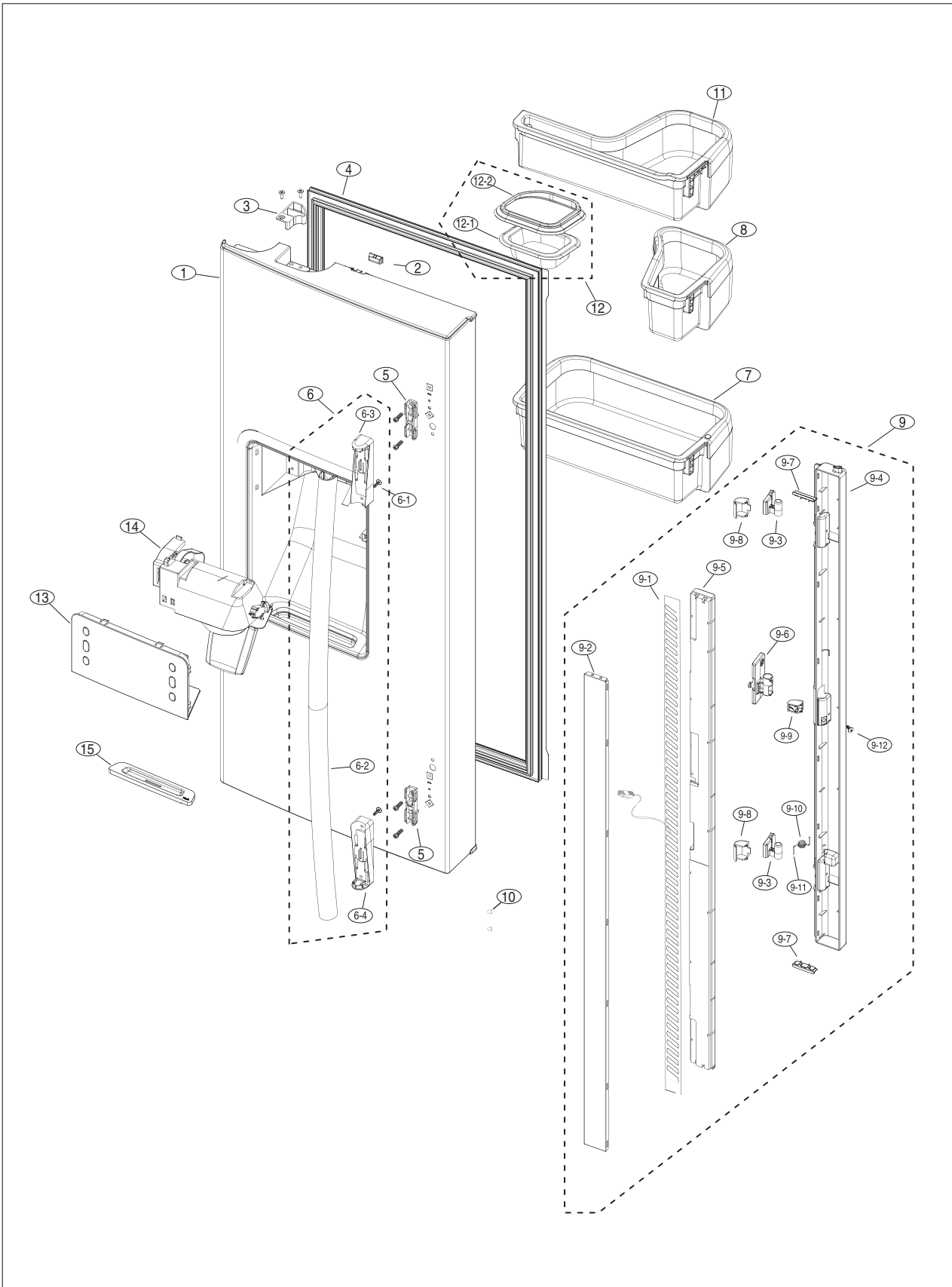
EXPLODED VIEW & PARTS LIST

■ Parts List of Freezer Door

NO	CODE-NO	PART NAME	SPEC	QUAN TITY	REMARK
1	DA90-04554A	ASSY DOOR FOAM FRE	AW-PJT,EMPIRE-BLACK	1	
1	DA90-04554B	ASSY DOOR FOAM FRE	AW-PJT,VERSAILLES-ST5,	1	
1	DA90-04554C	ASSY DOOR FOAM FRE	AW-PJT,SNOW-WHITE	1	
1	DA90-04554D	ASSY DOOR FOAM FRE	AW-PJT,PLATINUM-INOX	1	
1-1	DA67-01992A	CAP DOOR-FRE SUB L	AW-PJT,ABS, BLACK,EASY-HANDLE	1	
1-1	DA67-01992B	CAP DOOR-FRE SUB L	AW-PJT,ABS,CREAMY-ST5,EASY-HANDLE	1	
1-1	DA67-01992C	CAP DOOR-FRE SUB L	AW-PJT,ABS,Snow-White,EASY-HANDLE	1	
1-2	DA67-01993A	CAP DOOR-FRE SUB R	AW-PJT,ABS, BLACK,EASY-HANDLE	1	
1-2	DA67-01993B	CAP DOOR-FRE SUB R	AW-PJT,ABS,CREAMY-ST5,EASY-HANDLE	1	
1-2	DA67-01993C	CAP DOOR-FRE SUB R	AW-PJT,ABS,Snow-White,EASY-HANDLE	1	
2	DA97-05557B	ASSY-GASKET DOOR FRE	AW-PJT,GRAY,TD-SECT	1	
3	DA61-03153B	HANGER-RAIL FRONT L	AW,SECC1,T2.0,COOL-WHITE	1	
4	DA61-03155B	HANGER-RAIL FRONT R	AW-PJT,SECC1,T2.0,COOL-WHITE	1	
5	DA61-02904B	SUPPORT DOOR POSITION IN	AW-PJT,HIPS,NTR	2	
6	DA97-06429A	ASSY HANDLE-BAR FRE(EASY)	AW-PJT,MATURE BLACK	1	
6-1	DA64-02527A	HANDLE-BAR FRE	AW-PJT,AL,MATURE-BLACK,EASY-HANDLE	1	
6-2	DA67-01995A	CAP-HANDLE FRE L	AW-PJT,PC, BLACK,EASY-HANDLE	1	
6-3	DA67-01996A	CAP-HANDLE FRE R	AW-PJT,PC, BLACK,EASY-HANDLE	1	
6-4	DA66-00579A	SHAFT-CAP HANDLE	AW-PJT,MSWR10,108,5,ZPC3(Y)	2	
6-5	6002-000215	SCREW-TAPPING	TH,+,1,M4.0,L16,ZPC(WHT),SWRCH18A,	4	
6	DA97-06429B	ASSY HANDLE-BAR FRE(EASY)	AW-PJT,Versailles-ST5,Versailles-Silver	1	
6-1	DA64-02527B	HANDLE-BAR FRE	AW-PJT,AL,Versailles-Silver,EASY-HANDLE	1	
6-2	DA67-01995B	CAP-HANDLE FRE L	AW-PJT,PC,Versailles-Stainless,EASY-HANDLE	1	
6-3	DA67-01996B	CAP-HANDLE FRE R	AW-PJT,PC,Versailles-Stainless,EASY-HANDLE	1	
6-4	DA66-00579A	SHAFT-CAP HANDLE	AW-PJT,MSWR10,108,5,ZPC3(Y)	2	
6-5	6002-000215	SCREW-TAPPING	TH,+,1,M4.0,L16,ZPC(WHT),SWRCH18A,	4	
6	DA97-06429C	ASSY HANDLE-BAR FRE(EASY)	AW-PJT,SNOW WHITE	1	
6-1	DA64-02527C	HANDLE-BAR FRE	AW-PJT,AL,Snow-White,EASY-HANDLE	1	
6-2	DA67-01995C	CAP-HANDLE FRE L	AW-PJT,PC,Snow-White,EASY-HANDLE	1	
6-3	DA67-01996C	CAP-HANDLE FRE R	AW-PJT,PC,Snow-White,EASY-HANDLE	1	
6-4	DA66-00579A	SHAFT-CAP HANDLE	AW-PJT,MSWR10,108,5,ZPC3(Y)	2	
6-5	6002-000215	SCREW-TAPPING	TH,+,1,M4.0,L16,ZPC(WHT),SWRCH18A,	4	
6	DA97-06429D	ASSY HANDLE-BAR FRE(EASY)	AW-PJT,NEW VERSAILLES SILVER,SANDING	1	
6-1	DA64-02527D	HANDLE-BAR FRE	AW-PJT,AL,Versailles-Silver(sanding),EASY-HANDLE	1	
6-2	DA67-01995B	CAP-HANDLE FRE L	AW-PJT,PC,Versailles-Stainless,EASY-HANDLE	1	
6-3	DA67-01996B	CAP-HANDLE FRE R	AW-PJT,PC,Versailles-Stainless,EASY-HANDLE	1	
6-4	DA66-00579A	SHAFT-CAP HANDLE	AW-PJT,MSWR10,108,5,ZPC3(Y)	2	
6-5	6002-000215	SCREW-TAPPING	TH,+,1,M4.0,L16,ZPC(WHT),SWRCH18A,	4	
7	DA61-03762A	SUPPORT-GUARD FRE L	AW-PJT(BEST),HIPS(HG-1760SF),COOL-WHITE	1	
8	DA61-03763A	SUPPORT-GUARD FRE R	AW-PJT(BEST),HIPS(HG-1760SF),COOL-WHITE	1	
9	DA97-04880A	ASSY GUARD FRE	AW-PJT,COOL-WHT	1	
9-1	DA63-03458A	GUARD-FRE	AW-PJT,HIPS(HR1360),COOL-WHITE	1	
9-2	DA63-03459A	GUARD-FRE FLIP	AW-PJT,HIPS(HR1360),COOL-WHITE	1	
10	DA61-04254A	FIXER-SHAFT HANDLE L	AW-PJT,POM,-NTR,EASY-HANDLE	2	
11	DA61-04255A	FIXER-SHAFT HANDLE R	AW-PJT,POM,-NTR,EASY-HANDLE	2	
12	DA61-04258A	SLIDER-HANDLE FRE	AW-PJT,POM,EASY-HANDLE	2	
13	DA63-04247A	COVER-HANDLE FRE L	AW-PJT,ABS, BLACK,EASY-HANDLE	1	
13	DA63-04247B	COVER-HANDLE FRE L	AW-PJT,ABS,CREAMY-ST5,EASY-HANDLE	1	
13	DA63-04247C	COVER-HANDLE FRE L	AW-PJT,ABS,Snow-White,EASY-HANDLE	1	
14	DA63-04248A	COVER-HANDLE FRE R	AW-PJT,ABS, BLACK,EASY-HANDLE	1	
14	DA63-04248B	COVER-HANDLE FRE R	AW-PJT,ABS,CREAMY-ST5,EASY-HANDLE	1	
14	DA63-04248C	COVER-HANDLE FRE R	AW-PJT,ABS,Snow-White,EASY-HANDLE	1	

EXPLODED VIEW & PARTS LIST

5-5) Disassembly of Refrigerator DoorLeft



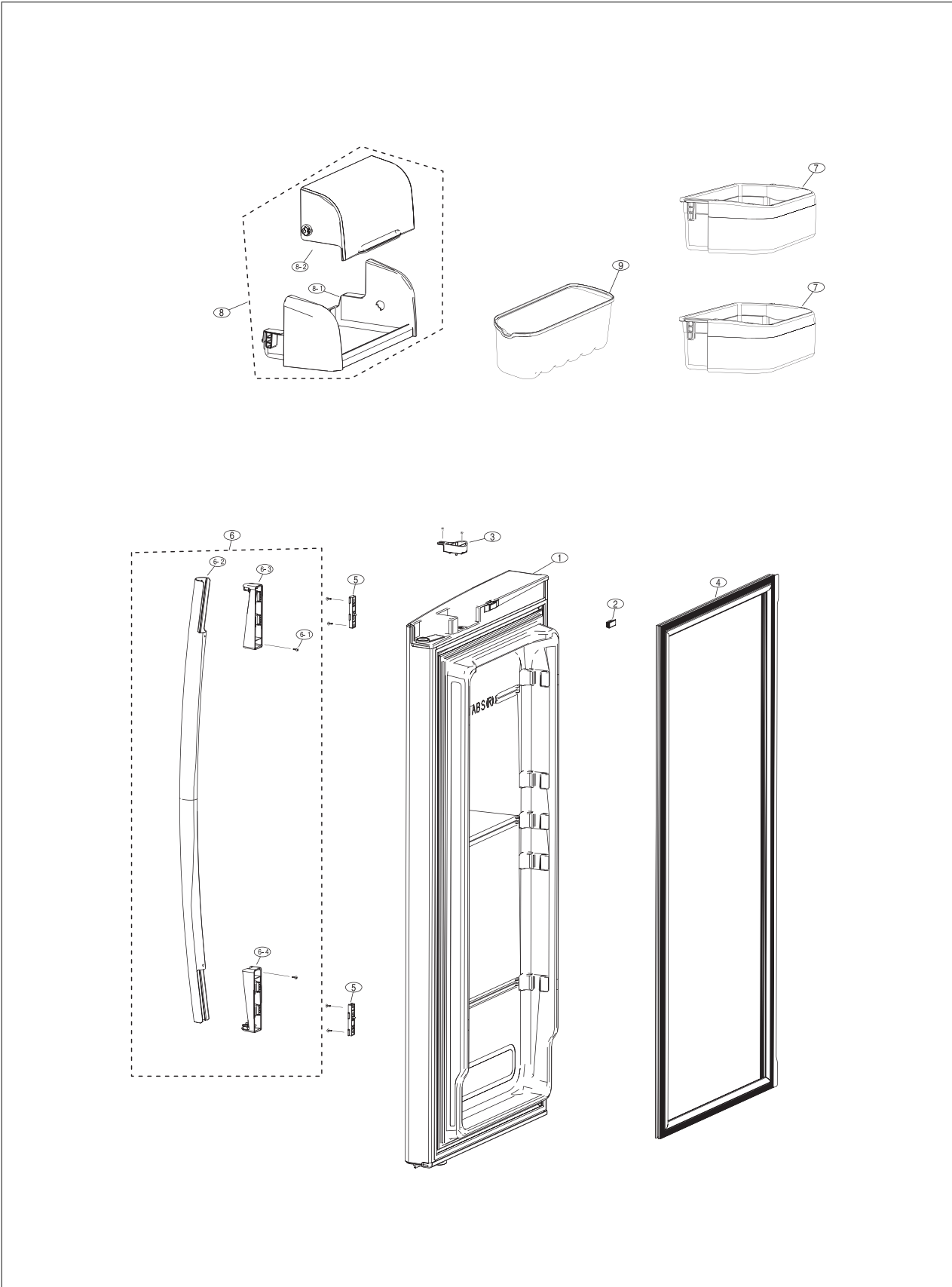
EXPLODED VIEW & PARTS LIST

■ Parts List of Refrigerator Door-Left

NO	CODE-NO	PART NAME	SPEC	QUAN TITY	REMARK
1	DA91-02544A	ASSY DOOR FOAM REF-L	AW-PJT,BLACK	1	
1	DA91-02544B	ASSY DOOR FOAM REF L	AW-PJT,REAL-STS	1	
1	DA91-02544C	ASSY DOOR FOAM REF L	AW-PJT,SNOW-WHITE	1	
1	DA91-02544D	ASSY DOOR FOAM REF L	AW-PJT,PLATINUM-STS	1	
2	DA61-02738E	MAGNET-ASSY	CORE-PJT,T5,W7,L18,i-BLACK	1	
2	DA61-02738F	MAGNET-ASSY	CORE-PJT,T5,W7,L18,Creamy-gray	1	
2	DA61-02738A	MAGNET-ASSY	CORE-PJT,T5,W7,L18,Snow-White	1	
3	DA66-00442A	CAM AUTO CLOSE L	AW-PJT,Nylon6,i-BLACK	1	
3	DA66-00442B	CAM AUTO CLOSE L	AW-PJT,Nylon6,Creamy-STS	1	
3	DA66-00442C	CAM AUTO CLOSE L	AW-PJT,Nylon6,Snow-White	1	
4	DA97-05253A	ASSY-GASKET DOOR REF	AW-PJT,W404,L978,BLACK	1	
4	DA97-05253B	ASSY-GASKET DOOR REF	AW-PJT,W404,L978,GRAY	1	
4	DA97-05253B	ASSY-GASKET DOOR REF	AW-PJT,W404,L978,WHITE	1	
5	DA61-02984A	FIXER-HANDLE	ATOP 06,POM,NTR,	2	
6	DA97-04417N	ASSY HANDLE-BAR	ATOP 06,MATURE-BLACK,i-BLACK	1	
6-1	6002-000215	SCREW-TAPPING	TH,+,1,M4.0,L16,ZPC(WHT),SWRCH18A	2	
6-2	DA64-01979A	HANDLE BAR	ATOP 06,AL(A6063),MATURE-BLACK	1	
6-3	DA67-01527E	CAP-HANDLE UPP	ATOP06,ABS(HG0760),i-BLACK	1	
6-4	DA67-01528E	CAP-HANDLE LOW	ATOP06,ABS(HG0760),i-BLACK	1	
6	DA97-04417J	ASSY HANDLE-BAR	ATOP06,Versailles-STS,Versailles-Silver	1	
6-1	6002-000215	SCREW-TAPPING	TH,+,1,M4.0,L16,ZPC(WHT),SWRCH18A	2	
6-2	DA64-01979E	HANDLE BAR	ATOP 06,AL(A6063),Versailles-STS(STRIPE HAIRLINE)	1	
6-3	DA67-01527F	CAP-HANDLE UPP	ATOP06,ABS(HG0760),Versailles-Silver	1	
6-4	DA67-01528F	CAP-HANDLE LOW	ATOP06,ABS(HG0760),Versailles-Silver	1	
6	DA97-04417D	ASSY HANDLE-BAR	ATOP 06,Snow-White	1	
6-1	6002-000215	SCREW-TAPPING	TH,+,1,M4.0,L16,ZPC(WHT),SWRCH18A	2	
6-2	DA64-01979D	HANDLE BAR	ATOP 06,AL(A6063),Snow-White	1	
6-3	DA67-01527D	CAP-HANDLE UPP	ATOP06,ABS(HG0760),Snow-White	1	
6-4	DA67-01528D	CAP-HANDLE LOW	ATOP06,ABS(HG0760),Snow-White	1	
6	DA97-04417K	ASSY HANDLE-BAR	ATOP-06,Versailles-STS,Platinum-STS(SANDING)	1	
6-1	6002-000215	SCREW-TAPPING	TH,+,1,M4.0,L16,ZPC(WHT),SWRCH18A	2	
6-2	DA64-01979B	HANDLE BAR	ATOP-06,AL(A6063),Versailles-STS	1	
6-3	DA67-01527F	CAP-HANDLE UPP	ATOP06,ABS(HG0760),Versailles-STS(SANDING)	1	
6-4	DA67-01528F	CAP-HANDLE LOW	ATOP06,ABS(HG0760),Versailles-STS(SANDING)	1	
7	DA97-04878C	ASSY GUARD REF	AW-PJT,PP(BJ730),COOL-WHITE(SC02740R)	1	
8	DA97-05241A	ASSY-GUARD_REF_MID	AW-PJT,HIPS+GPPS-,99,185,COOL-WHT,BEST,MID	1	
9	DA97-05021N	ASSY-FRENCH	AW-PJT,8W,Black,AW08_BEST	1	
9-1	DA47-00245C	HEATER CORD-FRENCH	AW-PJT,P-CORD,8W,115V,1653.0,FRENCH	1	
9-2	DA61-03207A	PLATE-FRENCH	AW-PJT,SECC1,T0.8,ALL-BLACK	1	
9-3	DA61-03230B	HINGE-FRENCH	AW-PJT,PC(HF-1023IM),COOL-WHITE	2	
9-4	DA61-03234A	CASE-FRENCH	AW-PJT,ABS,SNOW-WHITE	1	
9-5	DA62-01387A	INSULATION-FRENCH	AW-PJT,FOAMPS	1	
9-6	DA63-03454B	COVER-HEATER FRENCH	AW-PJT,PC(HF-1023IM),COOL-WHITE	1	
9-7	DA63-03508A	GASKET-FRENCH	AW-PJT,SILICON,BLACK	2	
9-8	DA67-01650A	CAP-CASE FRENCH	AW-PJT,ABS,SNOW-WHITE	2	
9-9	DA67-01701A	CAP-CASE FRENCH MID	AW-PJT,ABS,SNOW-WHITE	1	
9-10	DA81-01345A	SPRING-ETC FRENCH	STS304,P11.4	1	
9-11	DA81-01346A	PIN-FRENCH SPRING	RDPVC,WHITE	1	
9-12	6002-000213	SCREW TAPPING	TH,+,1,M4,L12,ZPC(WHT),SWRCH18A	1	
9	DA97-05021P	ASSY-FRENCH	AW-PJT,8W,Thai Silver,AW08_BEST	1	
9-1	DA47-00245C	HEATER CORD-FRENCH	AW-PJT,P-CORD,8W,115V,1653.0,FRENCH	1	
9-2	DA61-03207B	PLATE-FRENCH	AW-PJT,SECC1,T0.8	1	

EXPLODED VIEW & PARTS LIST

5-6) Disassembly of Refrigerator Door Right

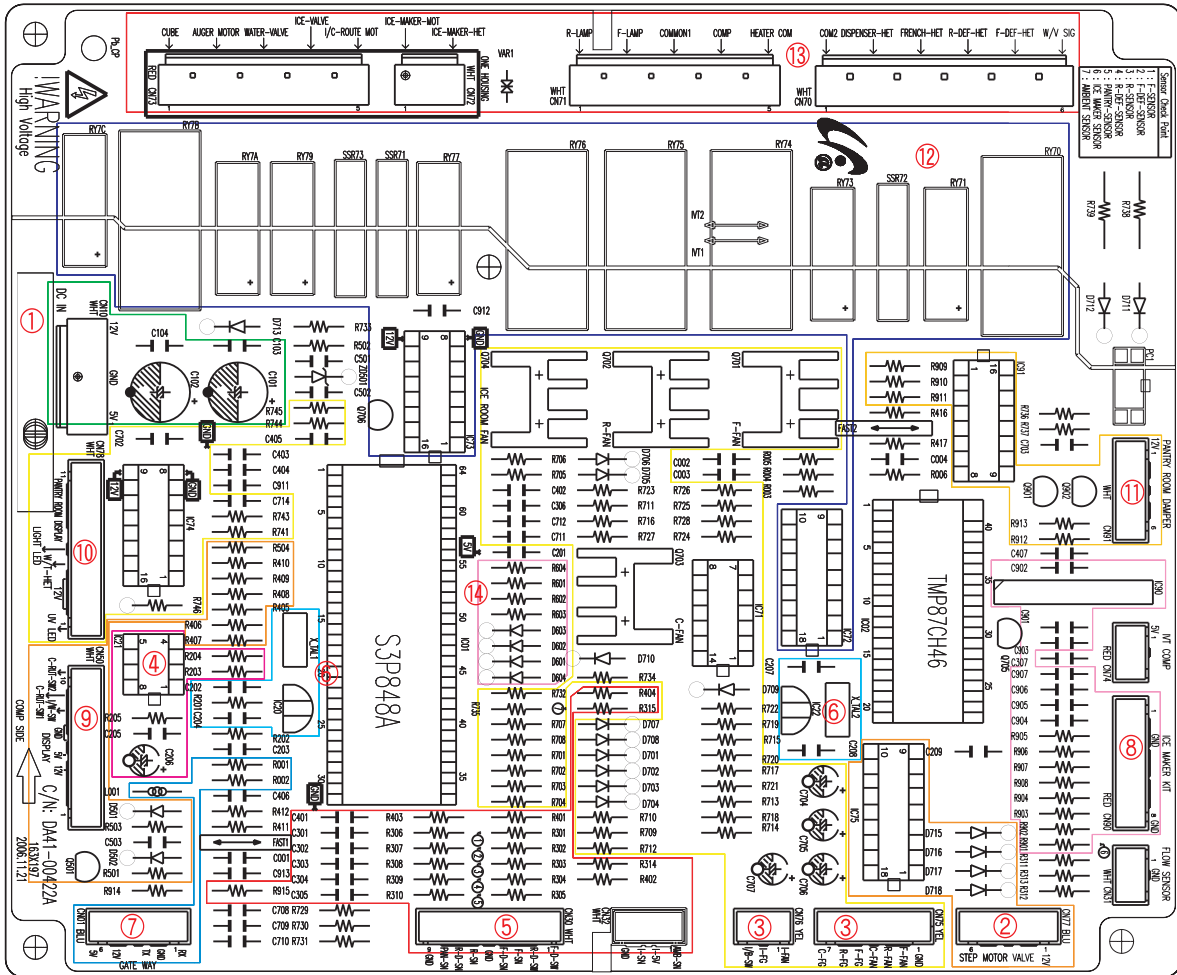


6. PCB DIAGRAM

6-1) PCB LAYOUT WITH PART POSITION	104
6-2) PCB LAYOUT WITH PART POSITION (SMPS BOARD)	105
6-3) CONNECTOR LAYOUT WITH PART POSITION (MAIN BOARD)	106
6-4) CONNECTOR LAYOUT WITH PART POSITION (SMPS OARD)	107

PCB DIAGRAM

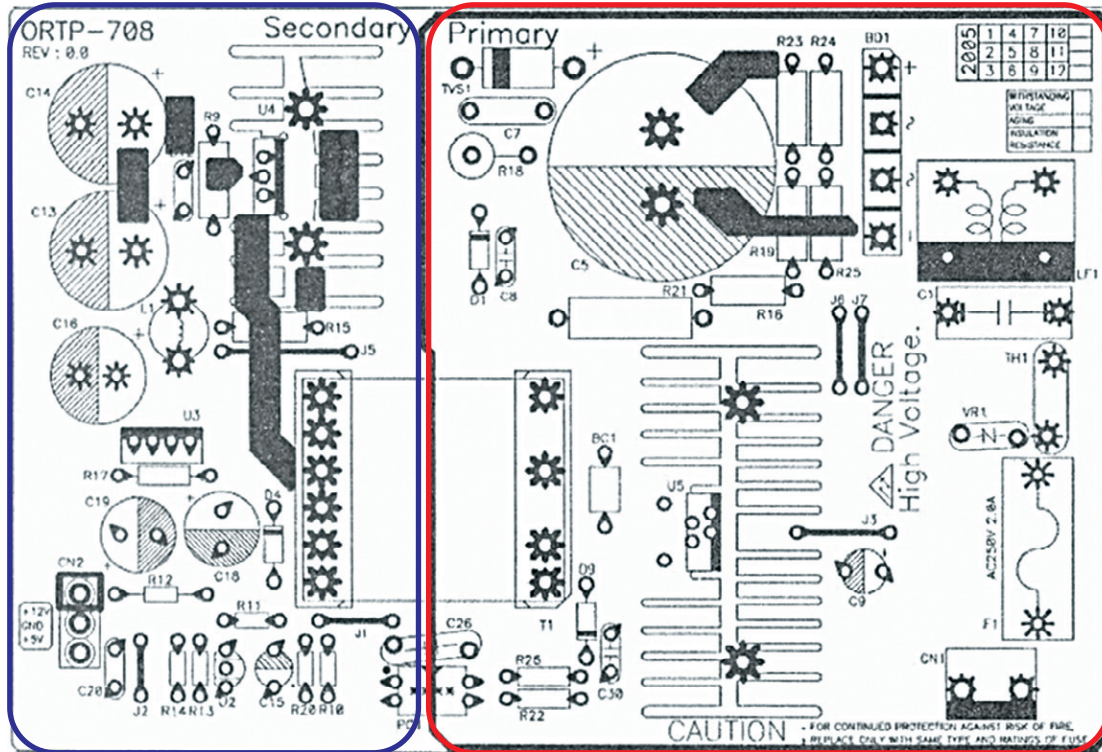
6-1) PCB Layout with part position



1. DC12V,5V,GND supplied from SMPS PCB
2. Circuit for controlling Step-Valve (3-Way Valve) * Option
3. FAN MOTOR control part : To supply the power from 8.3V ~ 12V according to the motor types. (F,R,C,ICE)
4. EEPROM : Save and record every kinds of data.
5. Transmit inputted signals from every sensor into MICOM after eliminate the noise .
6. Micom : control the refrigerator Ceramic resonator : generate the basic frequency of Micom operation.
Reset IC : make Micom reset if input voltage of Micom is detected less than the specified voltage
7. PLC input/output
- PLC (Power Line communication) * Option(PLC module is not inserted unless specified occasion)
8. Operate ICE-MAKER, supply power to MOTOR, and sense the variation of switch.
9. Main Micom ↔ Panel Micom serial communication circuit
- Dispenser option input part (Water & Cover Ice route switch)
10. Pantry room display control part : display LED, detect KEY state.
11. Control Pantry room damper & Damper heater
12. Relay part for controlling the AC load : Relay control IC makes the relay ON/OFF by Micom signal.
13. Connector part : connect AC load
14. Diode option setting part

PCB DIAGRAM

6-2) PCB Layout with part position (SMPS Board)



①

②

Switching mode power supply

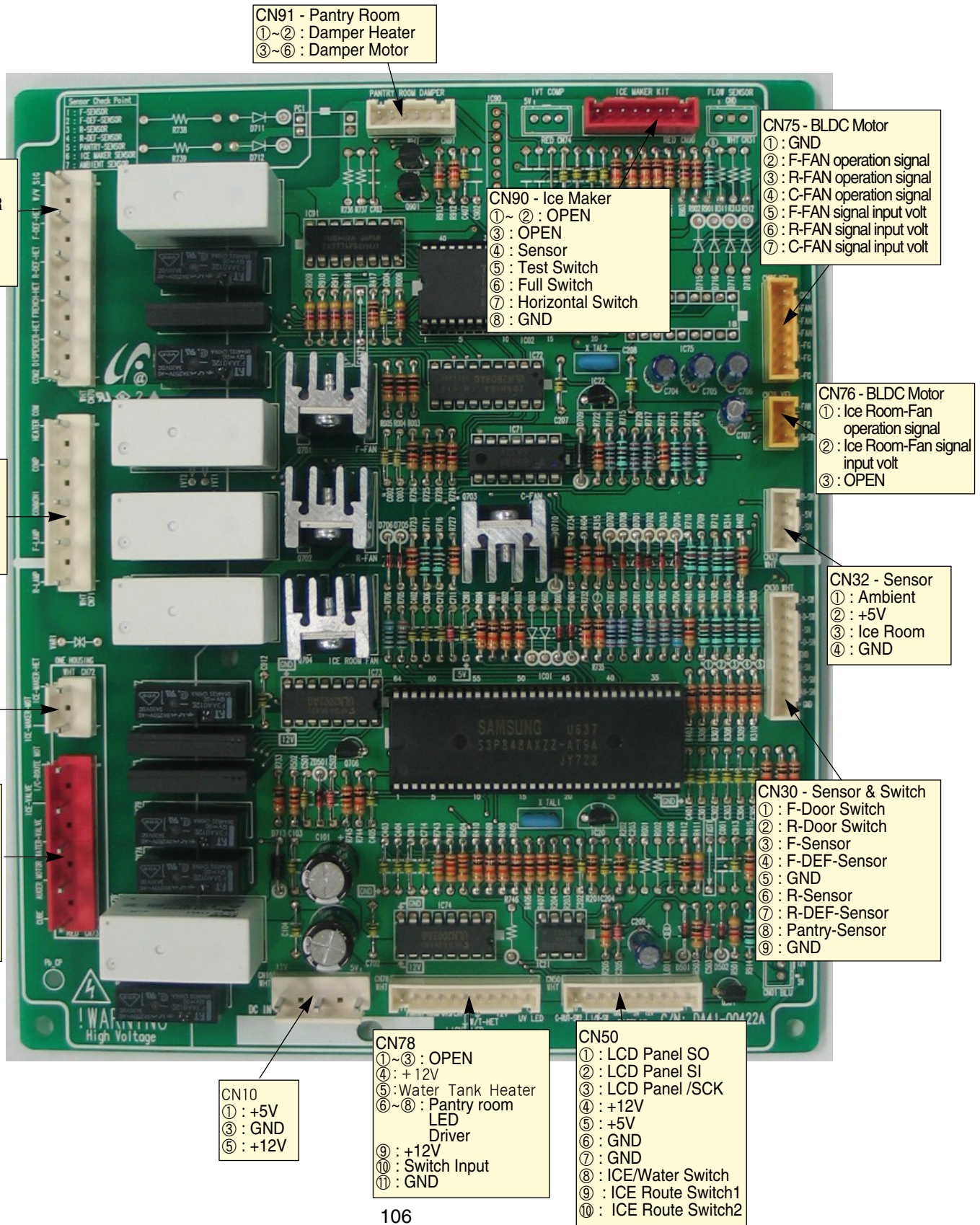
Circuit : change the AC voltage to DC voltage that needs for controlling the appliance.

1. BLOCK : Rectify the inputted AC voltage to DC voltage
2. BLOCK : Change the rectified DC voltage to DC12V & DC5V that needs for controlling the appliance with PWM IC and switching trans.

PCB DIAGRAM

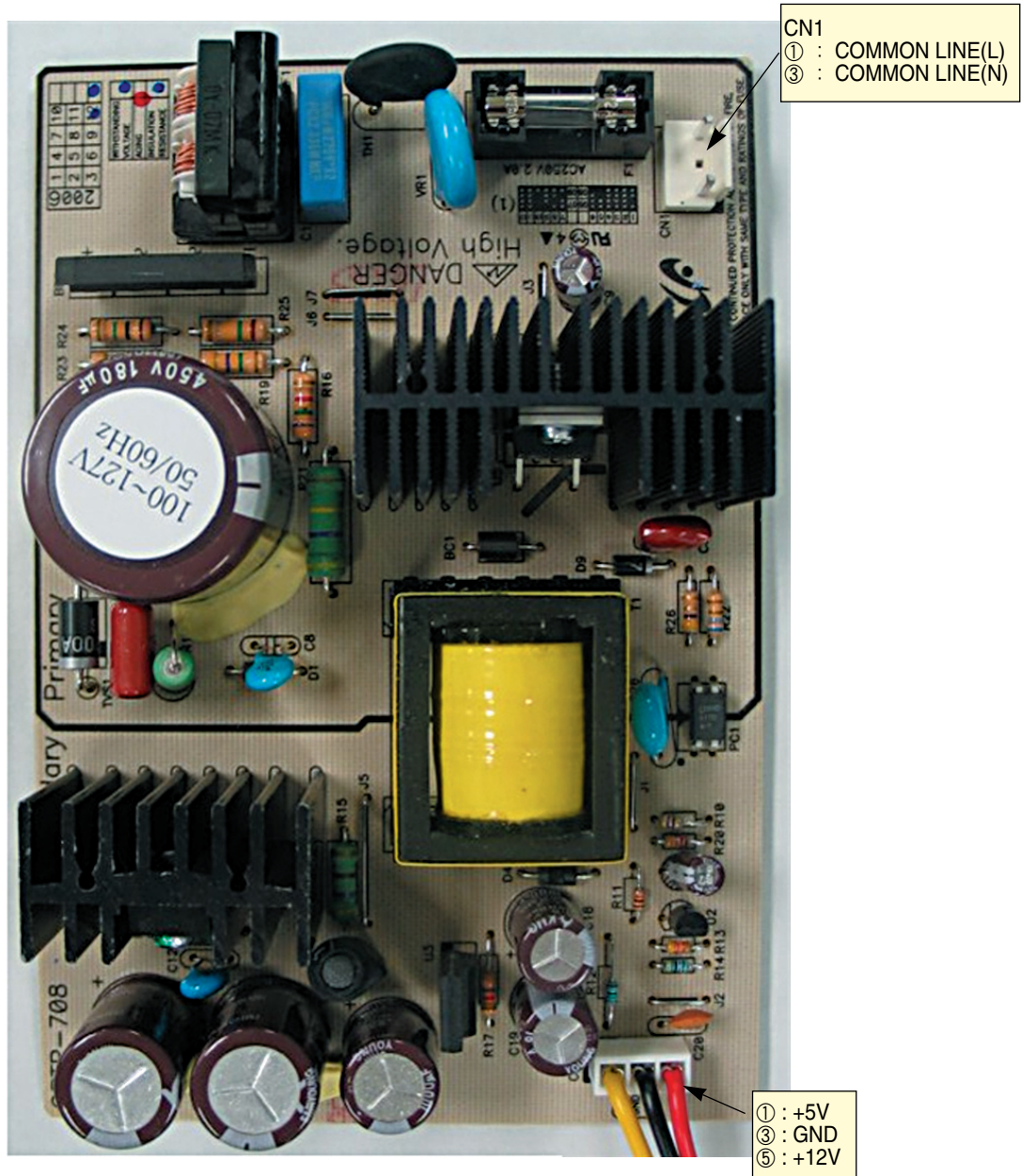
6-3) Connector Layout with part position (Main Board)

6-3-1. RF267**



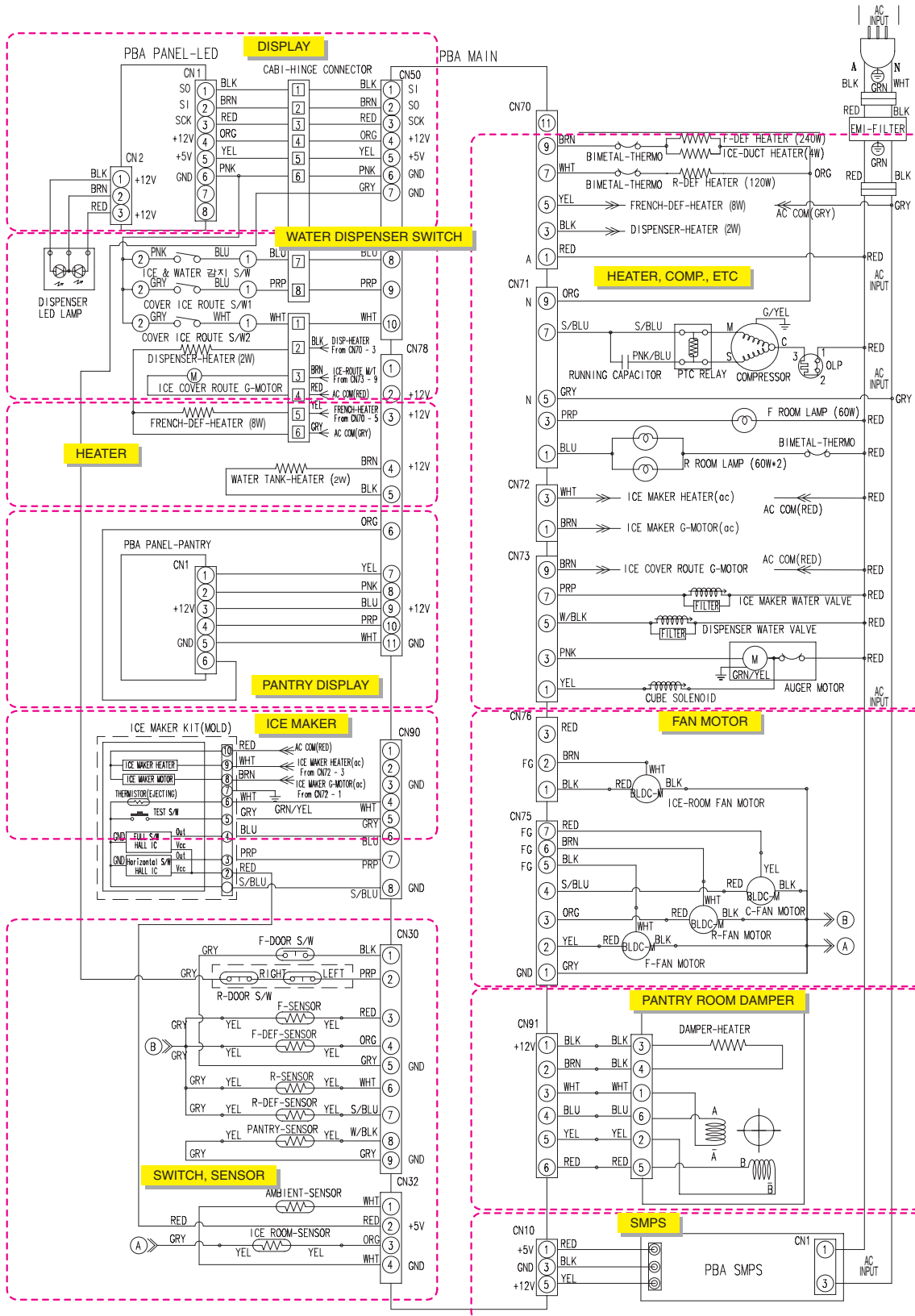
PCB DIAGRAM

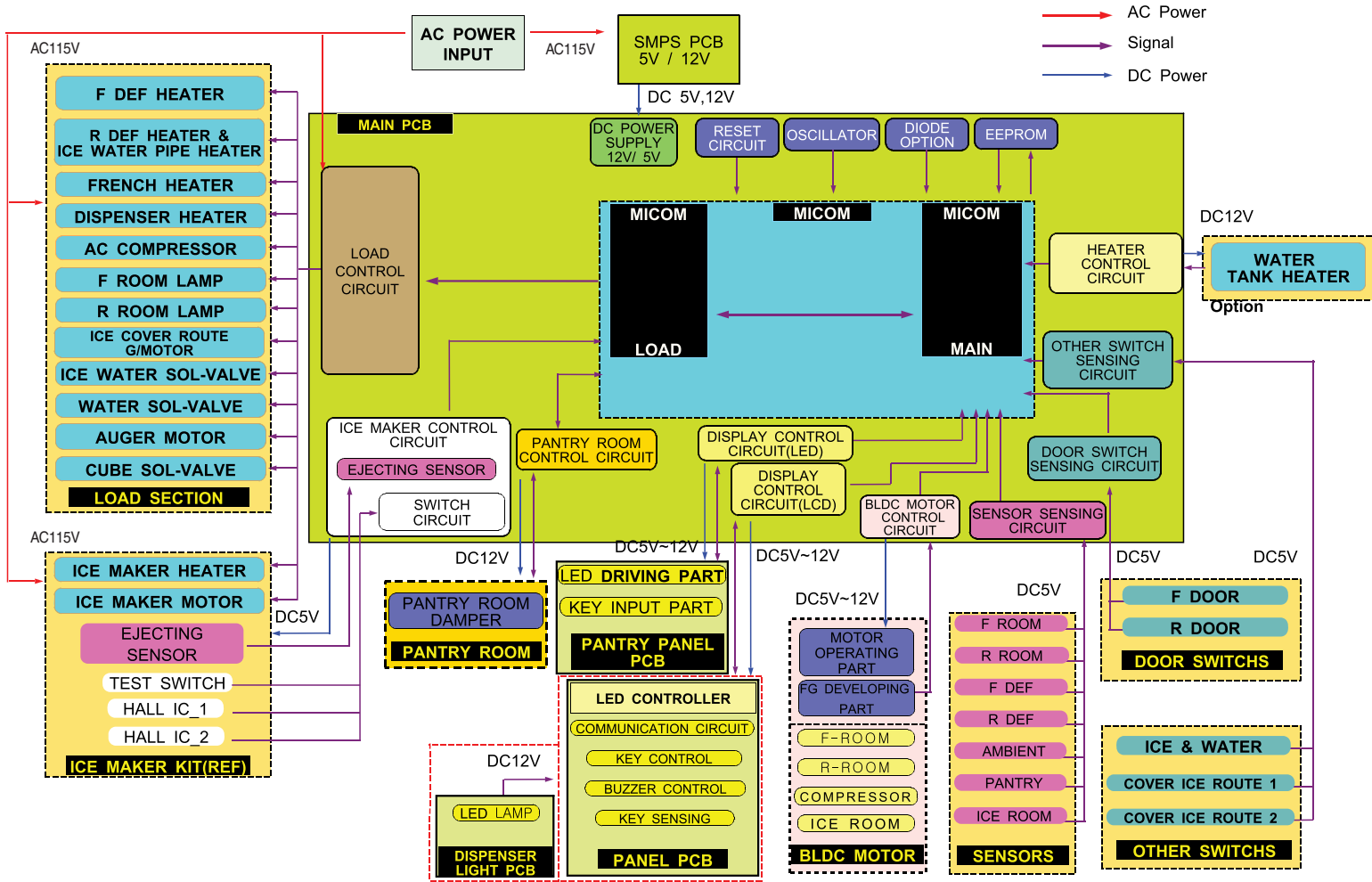
6-4) Connector Layout with part position (SMPS Board)



7. WIRING DIAGRAM

7-1) Model : RF267AB

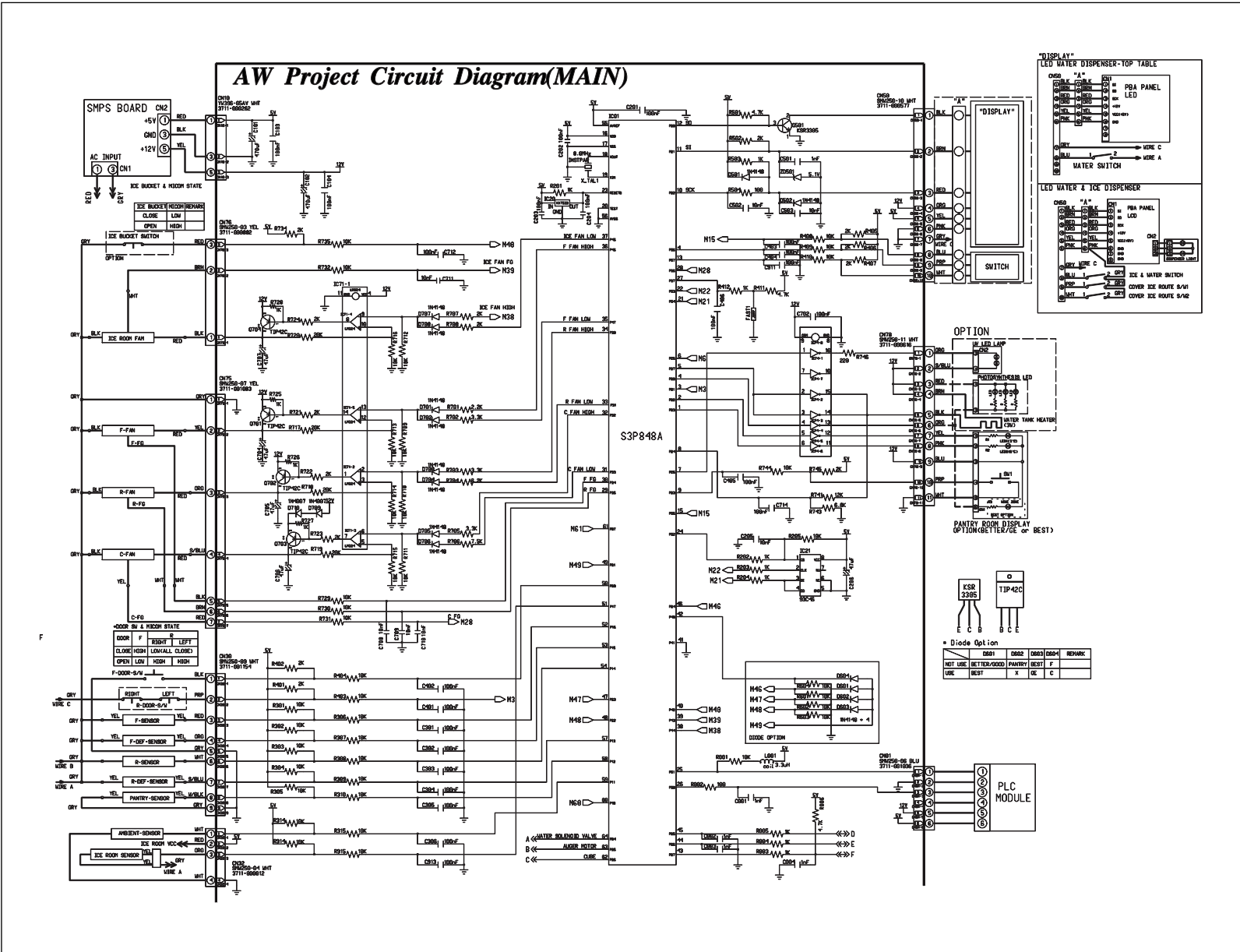




8-1-1. MODEL : RF267AB

8-1) Whole block diagram

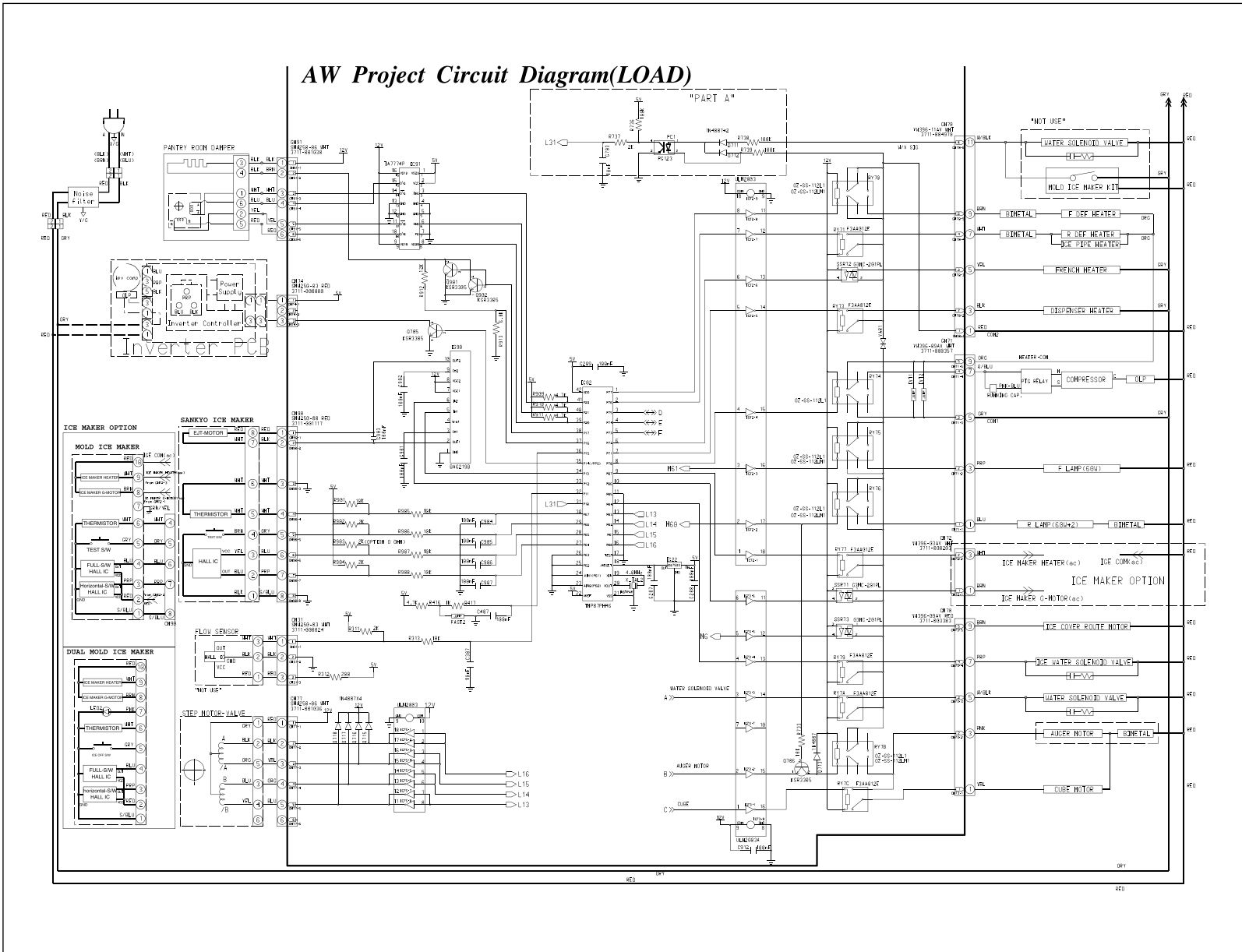
8. SCHEMATIC DIAGRAM



SCHEMATIC DIAGRAM

8-2) CIRCUIT DIAGRAM

8-2-2. Sheet 2 of 2



Model name (nomenclature) - RF267AB



PRODUCT : F-FRENCH DOOR
S-SBS
M-MULTI DOOR
B-BMF

Capacity : CU.FT

MAIN OPTION
(specifications for initial development)
5-GOOD
6-BETTER
7-BEST

COLOR Class
WP - SNOW WHITE
PN - PLATINUM INOX
RS - REAL STAINLESS
BP - BLACK

PJT derivation sequence within type (Not production year)
A - 1st Generation
B - 2nd Generation

SUB OPTION (by partner)
A-ALL CUSTOMERS

BUYER NAME



272, Oseon-Dong, Gwangsan-Gu,
Gwangju-City, Korea, 506-253
TEL : 82-62-950-6193, 6896
FAX : 82-62-950-6829

- This Service Manual is a property of Samsung Electronics Co., Ltd.
Any unauthorized use of Manual can be punished under applicable
International or domestic law.