

This Owner's Manual is provided and hosted by [Appliance Factory Parts](#).



Charbroil 461722414 Owner's Manual

[Shop genuine replacement parts for Charbroil
461722414](#)



[Find Your Charbroil Grill Parts - Select From 3621 Models](#)

----- Manual continues below part list -----

Available Replacement Parts for Charbroil 461722414

| | |
|--------------------------------|--|
| G430-0033-W1 | Grease Cup Aluminized. Measures approxim |
| G508-0039-W1 | Match Holder And Chain. |
| G401-0086-W2 | Logo Plate. Thermos |
| g434-0009-w1 | Heat Shield. Measures approximately: 17. |
| G305-0100-W3 | Burner with venturi Stainless steel |
| G206-0025-W1 | Wheel. Fits many Char-Broil, Thermos and |
| G206-0010-W1 | Lower Hinge. |
| g305-0007-w1 | Heat Tent. Measures approximately: 23.8" |
| G305-0090-W1 | Handle. Measures approximately: 12" L x |
| G401-0023-W1 | Knob. Measures approximately: 2" L x 2" |
| G305-0043-W2 | Clip For Grease Cupplated. |
| G206-0002-W1 | Upper Hinge. |
| G305-0057-W1 | Retainer Clip. |
| G305-0084-W1 | Electrode For Sideburner. Fits multiple |
| G305-0003-W1 | Collector/ Electrode Assy. Fits multiple |
| G208-0012-W1 | Leg Extender. Measures approximately: 2. |
| G305-0023-W1 | Axle Rod. Fits multiple Char-Broil, Ther |
| G434-5500-W1 | Sideburner. Item has been replaced by pa |
| G305-0017-W1 | Right Front Leg Curved. Works with multi |
| G305-0018-W1 | Right Back Leg Straight. Works with Char |
| G303-0022-W1 | Sideburner Grate. Black porcelain grate. |
| G305-0080-W1 | Swingaway Grid. Constructed with porcela |
| E201-0009-W1 | Right Side Shelf. Measures approximately |
| G305-0081-W1 | Cooking Grate. Porcelain cooking grate. |
| G305-0002-W1 | Firebox. Works with multiple 2-burner Cl |
| G305-4400-W1 | Valve Hose Regulator. Measures approxima |
| 03120 | spark generator; Weber |
| G30516-B001-W2 | Hardware Pack. |

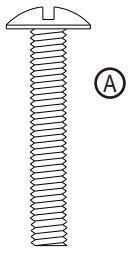
ASSEMBLY/ ASSEMBLAGE/ ARMADO

NOTE: DO NOT over tighten screws and washers that come into contact with porcelain coated surfaces. Over tightening may cause the porcelain coating to crack and break, resulting in exposed metal that will be prone to rust.

REMARQUE: NE serrez PAS excessivement les vis et les rondelles qui sont en contact avec les surfaces au revêtement en porcelaine. Un serrage excessif peut fissurer ou briser le revêtement en porcelaine, entraînant l'exposition du métal qui pourrait rouiller.

Nota: NO apriete demasiado los tornillos y arandelas que entren en contacto con las superficies revestidas de porcelana. Si los aprieta demasiado, se puede quebrar y romper el revestimiento de porcelana lo que dejará expuesto el metal al proceso de oxidación.

1



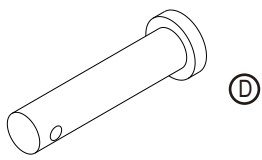
#10-24x1-1/4" Machine Screw
Qty. 1
Vis à métaux n° 10-24x1¼ po
Qté: 1
Tornillos No. 10-24 x 1-1/4"
Cant. 1



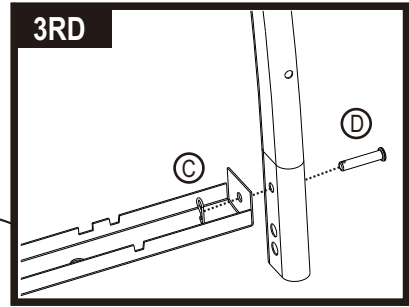
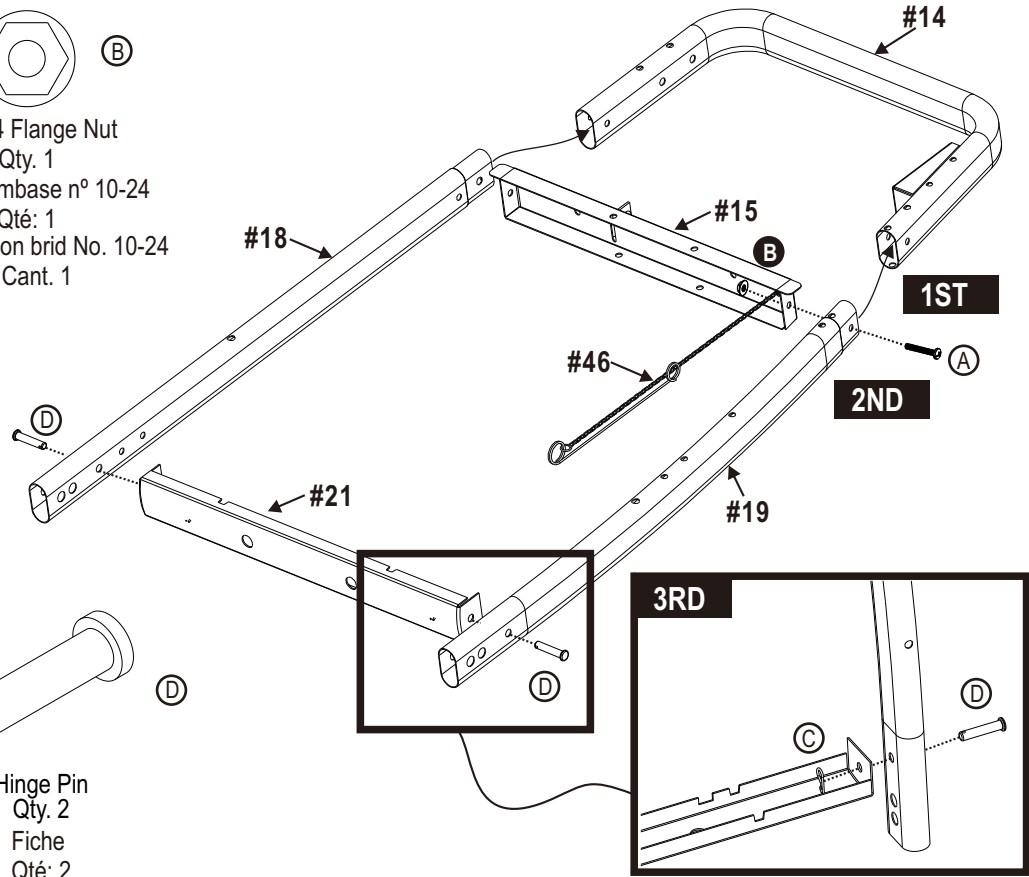
#10-24 Flange Nut
Qty. 1
Écrou à embase n° 10-24
Qté: 1
Tuercas con brid No. 10-24
Cant. 1



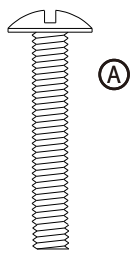
Hitch Pin
Qty. 2
Cheville
Qté: 2
pasador de acoplamiento
Cant. 2



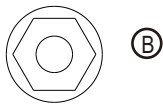
Hinge Pin
Qty. 2
Fiche
Qté: 2
pasador de articulación
Cant. 2



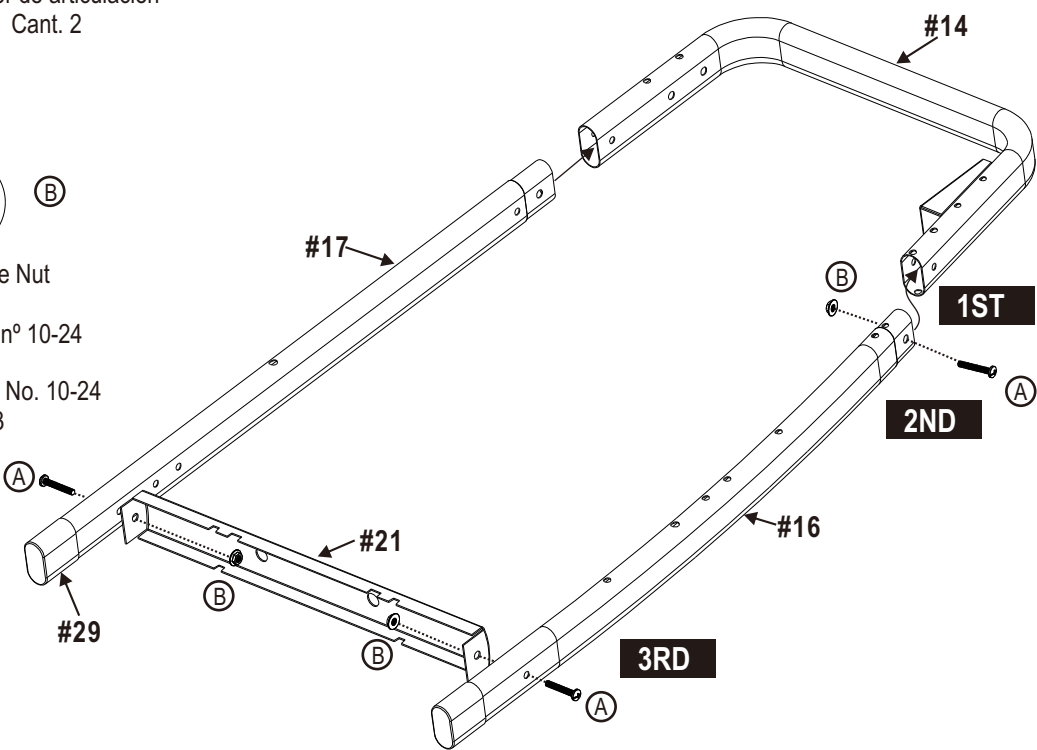
2

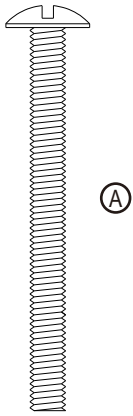


#10-24x1-1/4" Machine Screw
Qty. 3
Vis à métaux n° 10-24x1¼ po
Qté: 3
Tornillos No. 10-24 x 1-1/4"
Cant. 3

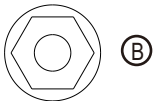


#10-24 Flange Nut
Qty. 3
Écrou à embase n° 10-24
Qté: 3
Tuercas con brid No. 10-24
Cant. 3

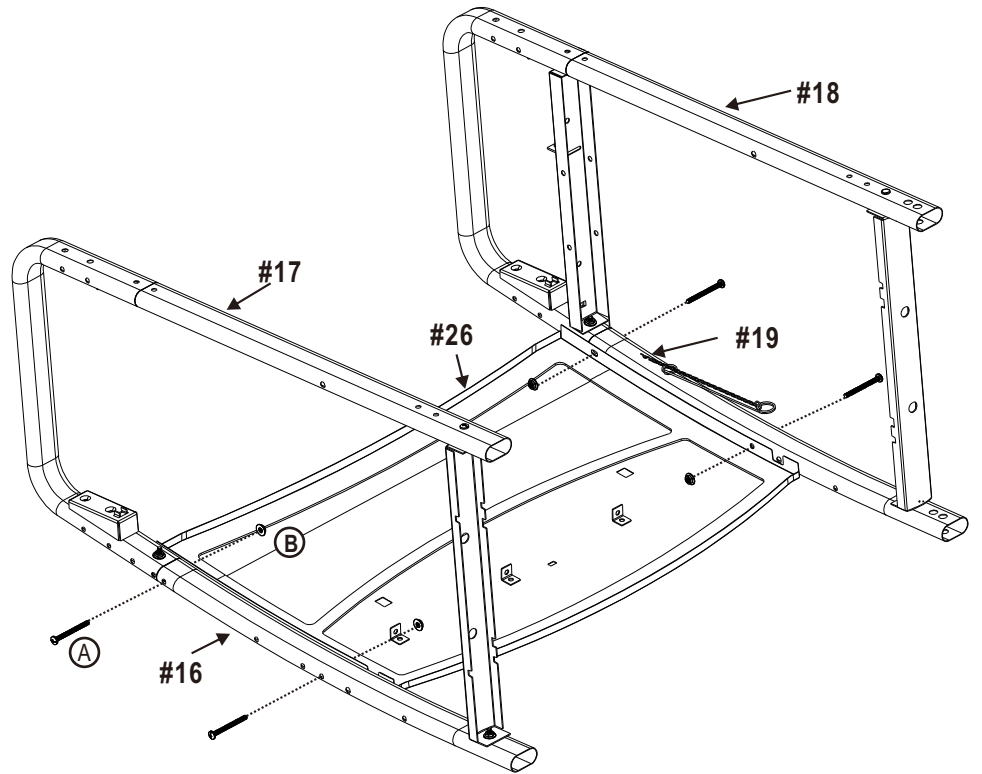
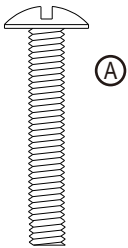


3

#10-24x2" Machine Screw
Qty. 4
Vis à métaux n° 10-24x2 po
Qté: 4
Tornillos No. 10-24 x 2"
Cant. 4



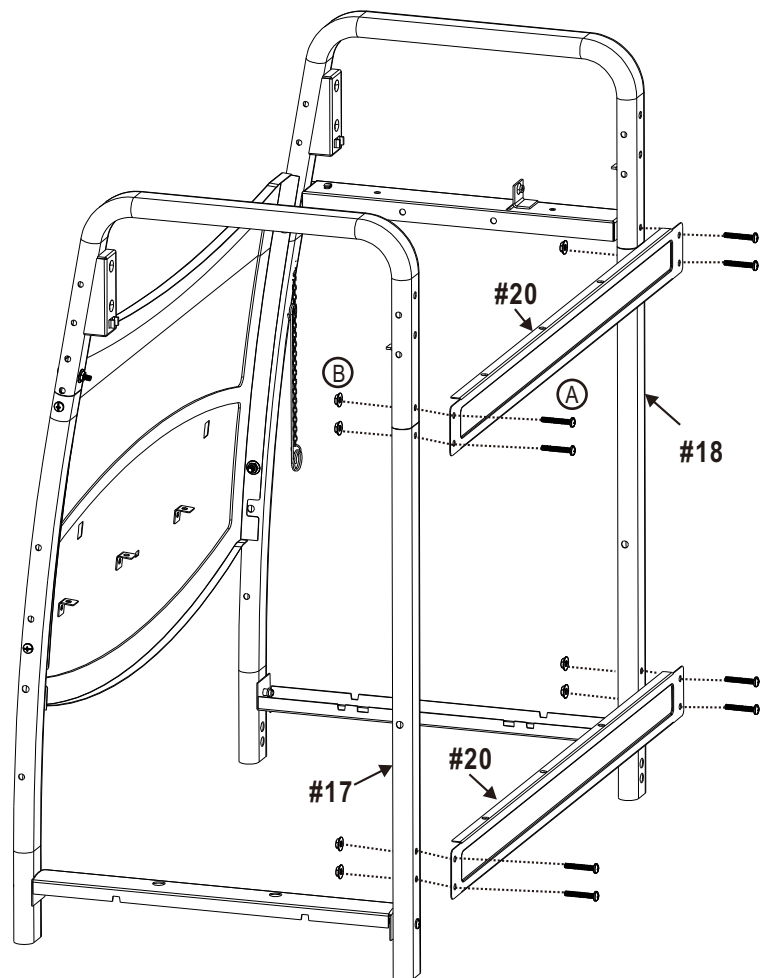
#10-24 Flange Nut
Qty. 4
Écrou à embase n° 10-24
Qté: 4
Tuercas con brid No. 10-24
Cant. 4

**4**

#10-24x1-1/4" Machine Screw
Qty. 8
Vis à métaux n° 10-24x1¼ po
Qté: 8
Tornillos No. 10-24 x 1-1/4"
Cant. 8



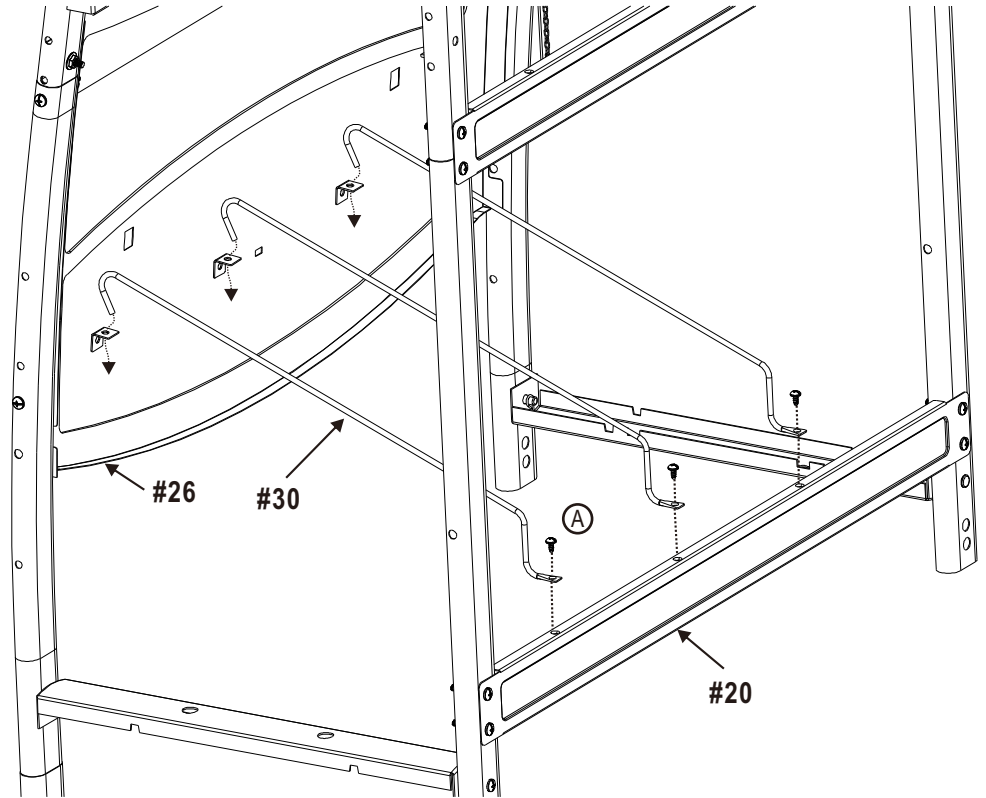
#10-24 Flange Nut
Qty. 8
Écrou à embase n° 10-24
Qté: 8
Tuercas con brid No. 10-24
Cant. 8



5



#8x3/8"
Sheet Metal Screw
Qty. 3
Vis à tôle n° 8x3/8 po
Qté: 3
Tornillo autorroscante
No. 8 de 3/8"
Cant. 3



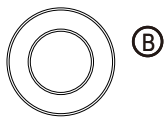
6



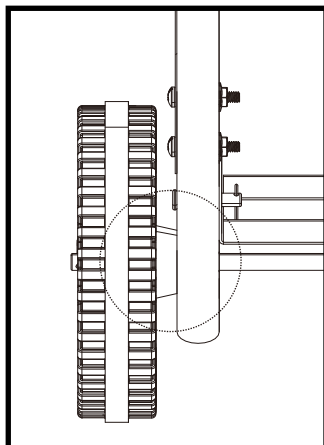
#38



Hitch Pin
Qty. 1
Cheville
Qté: 1
Pasador de
acoplamiento
Cant. 1



Wheel Bushing
Qty. 1
Palier de roue
Qté: 1
Manguito para rueda
Cant. 1



#19

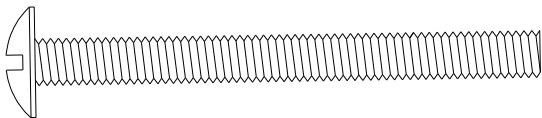
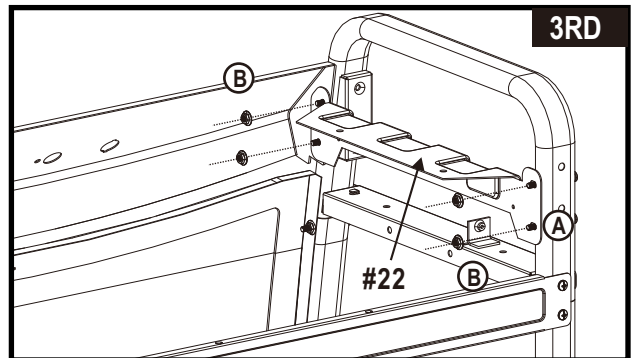
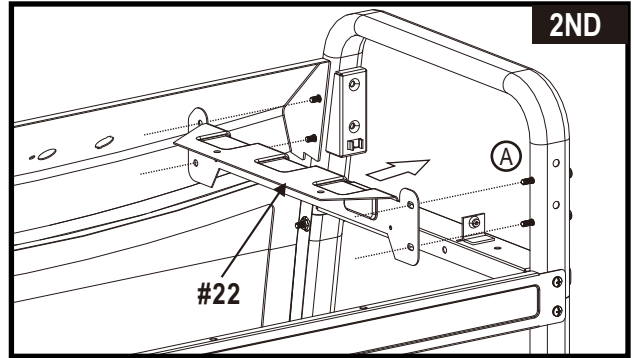
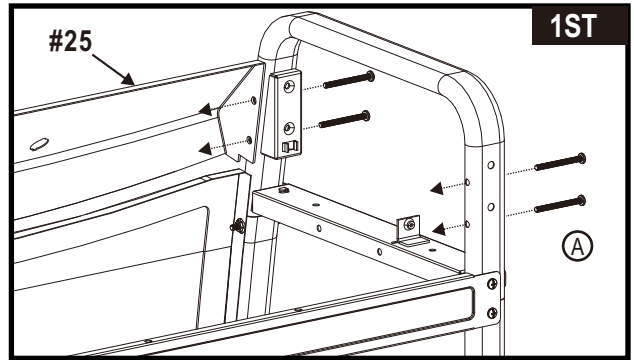
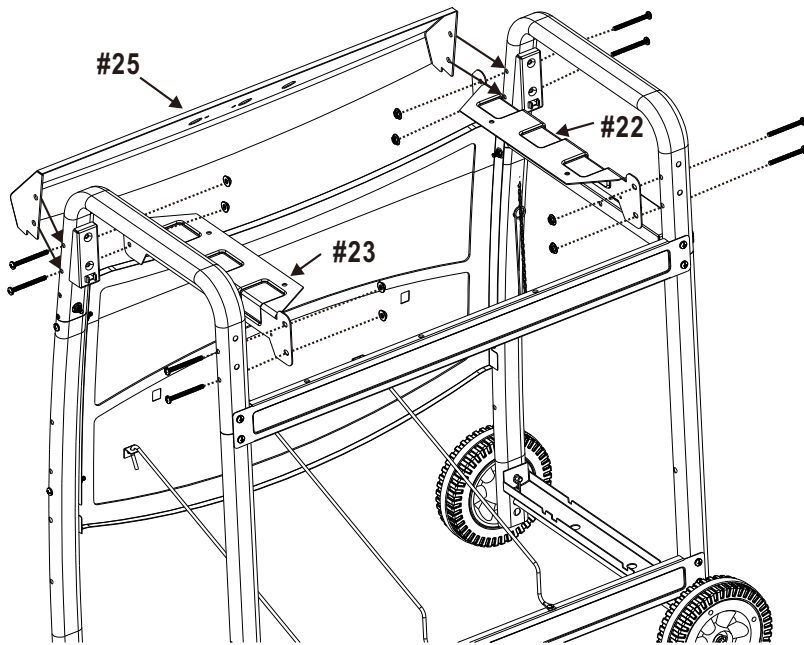
#38

#18

B

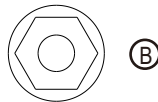
A

7



(A)

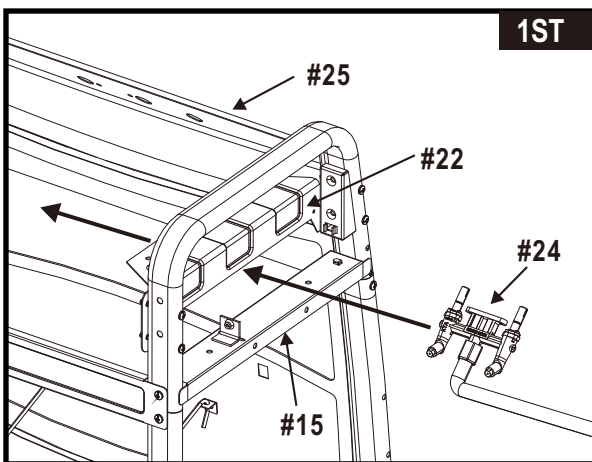
#10-24x2" Machine Screw
Qty. 8
Vis à métaux n° 10-24x2 po
Qté: 8
Tornillos No. 10-24 x 2"
Cant. 8



(B)

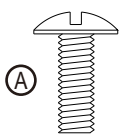
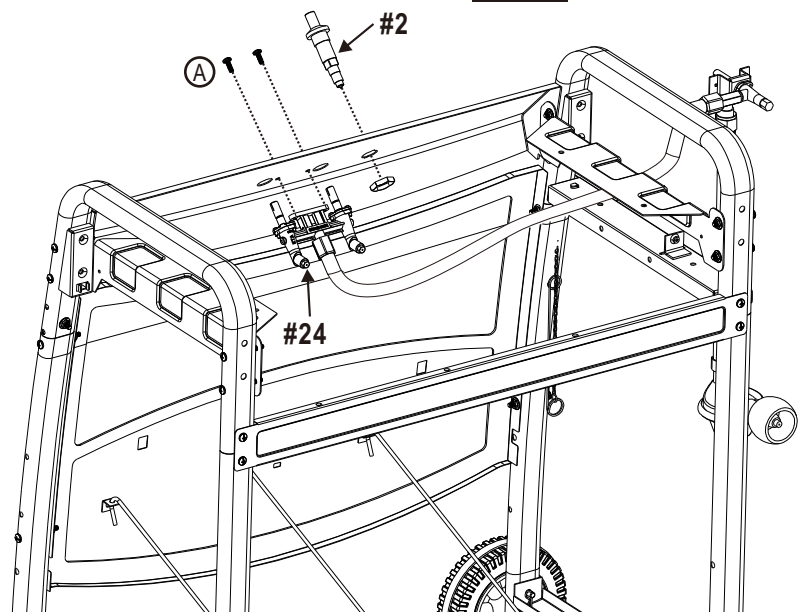
#10-24 Flange Nut
Qty. 8
Écrou à embase n° 10-24
Qté: 8
Tuercas con brid No. 10-24
Cant. 8

8



1ST

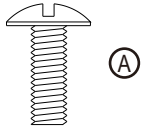
2ND



(A)

#10-24x1/2" Machine Screw
Qty. 2
Vis à métaux n° 10-24x1/2 po
Qté: 2
Tornillos No. 10-24 x 1/2"
Cant. 2

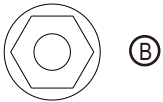
9



#10-24x1/2" Machine Screw
Qty. 2

Vis à métaux n° 10-24x1/2 po
Qté: 2

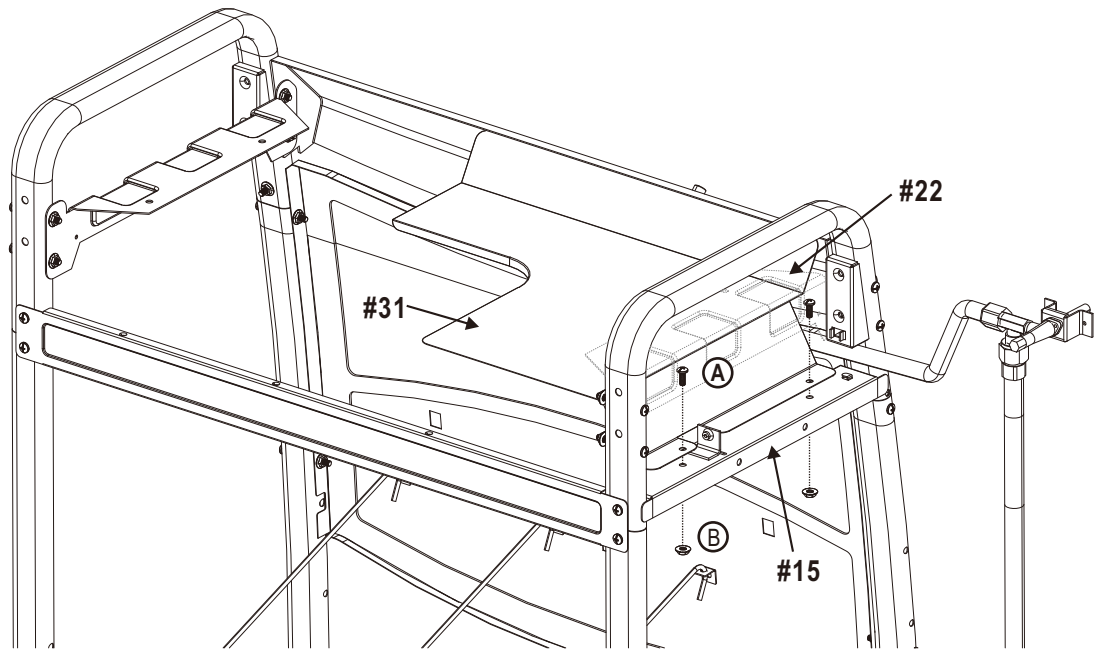
Tornillos No. 10-24 x 1/2"
Cant. 2



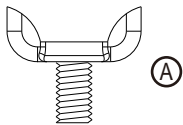
#10-24 Flange Nut
Qty. 2

Écrou à embase n° 10-24
Qté: 2

Tuercas con brid No. 10-24
Cant. 2



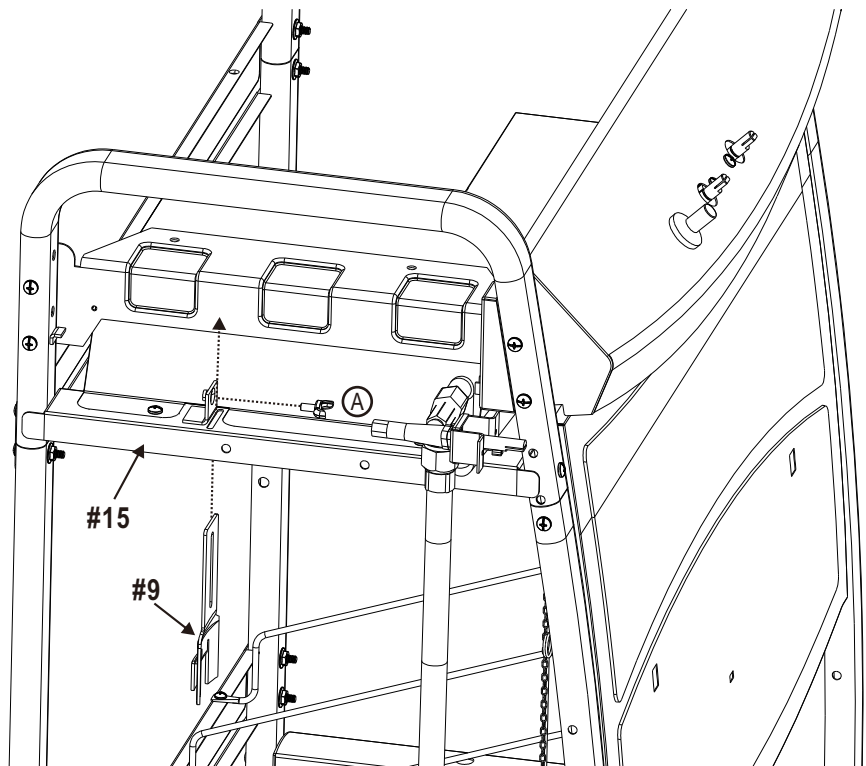
10



#10-24X3/8" Wing Screw
Qty. 1

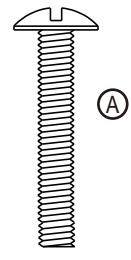
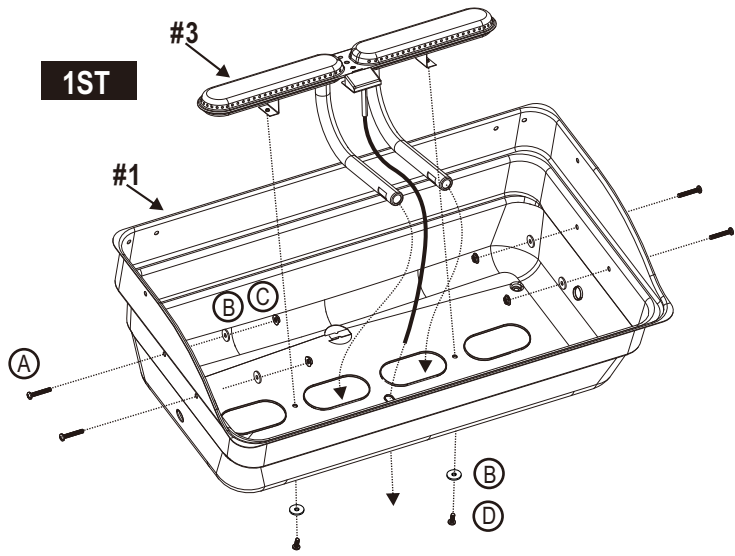
Vis à oreilles
n° 10-24x3/8 po
Qté: 1

Tornillo de mariposa
No. 10-24 x 3/8"
Cant. 1

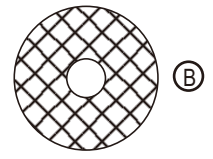


11

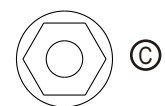
1ST



#10-24x1-1/4" Machine Screw
Qty. 4
Vis à métaux n° 10-24x1¼ po
Qté: 4
Tornillos No. 10-24 x 1-1/4"
Cant. 4

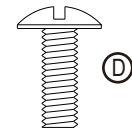
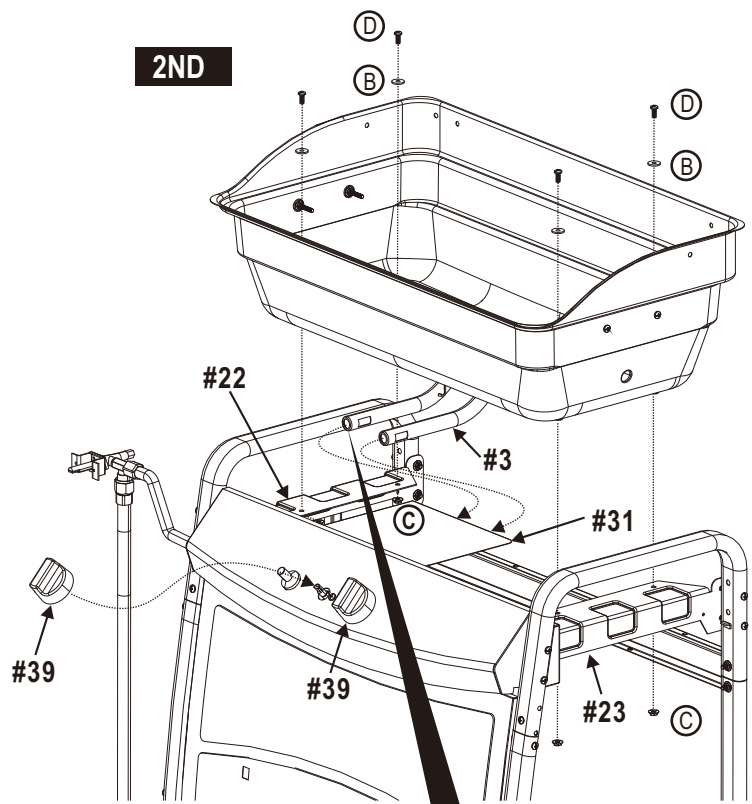


5X15 Fiber Washer
Qty. 10
Rondelle en fibre de 5x15
Qté: 10
Arandelas de fibra de 5x15
Cant. 10

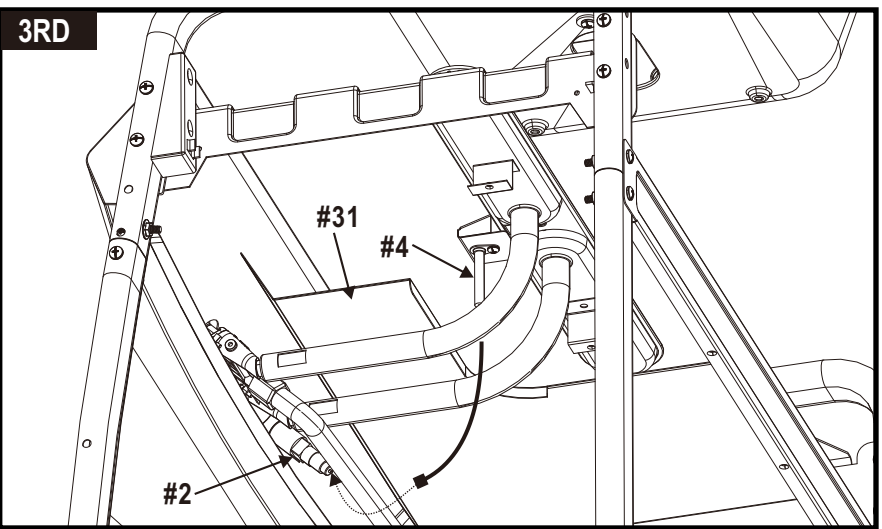
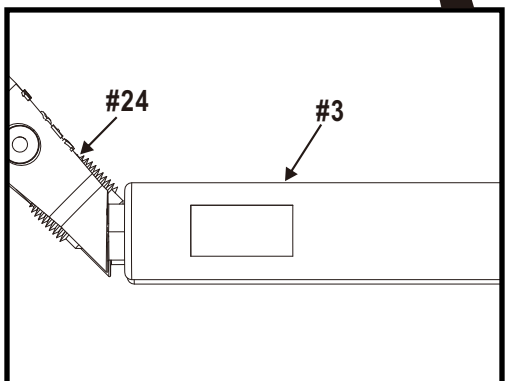


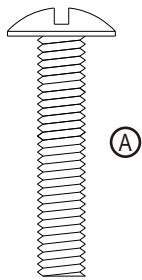
#10-24 Flange Nut
Qty. 8
Écrou à embase n° 10-24
Qté: 8
Tuercas con brida No. 10-24
Cant. 8

2ND

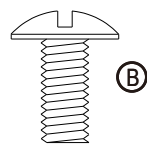


#10-24x1/2" Machine Screw
Qty. 6
Vis à métaux n° 10-24x1/2 po
Qté: 6
Tornillos No. 10-24 x 1/2"
Cant. 6

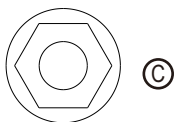


12

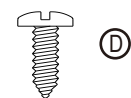
1/4-20x1-1/4" Machine Screw
Qty. 4
Vis à métaux 1/4-20x1 1/4 po
Qté: 4
Tornillo para metales de
1/4 -20 x 1-1/4"
Cant. 4



1/4-20x1/2" Machine Screw
Qty. 4
Vis à métaux 1/4-20x1/2 po
Qté: 4
Tornillo para metales de
1/4 -20 x 1/2"
Cant. 4



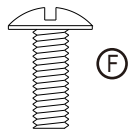
1/4-20 Flange Nut
Qty. 4
Écrou à embase 1/4 po-20
Qté: 4
Tuerca con brida de 1/4 -20
Cant. 4



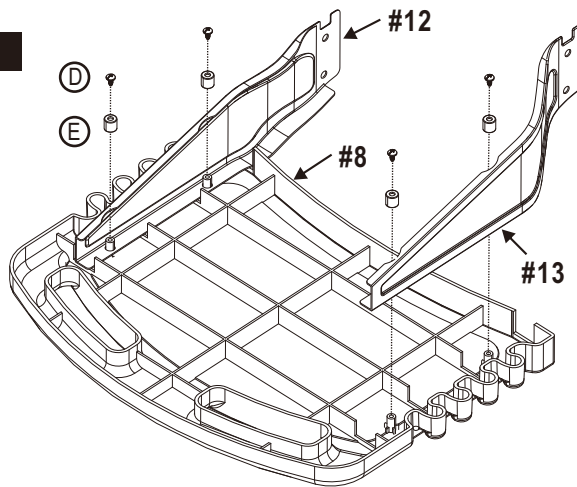
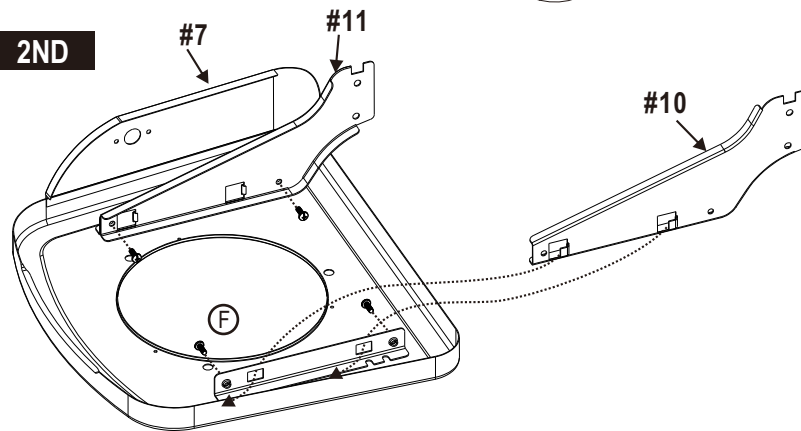
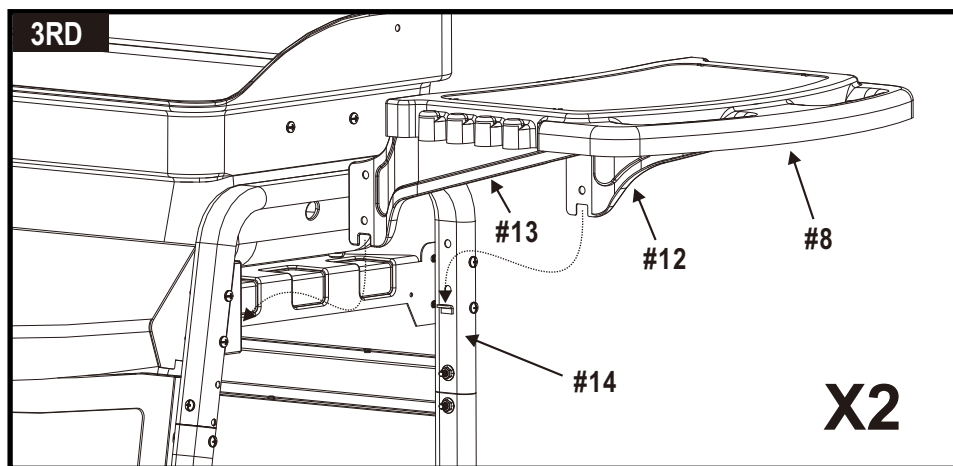
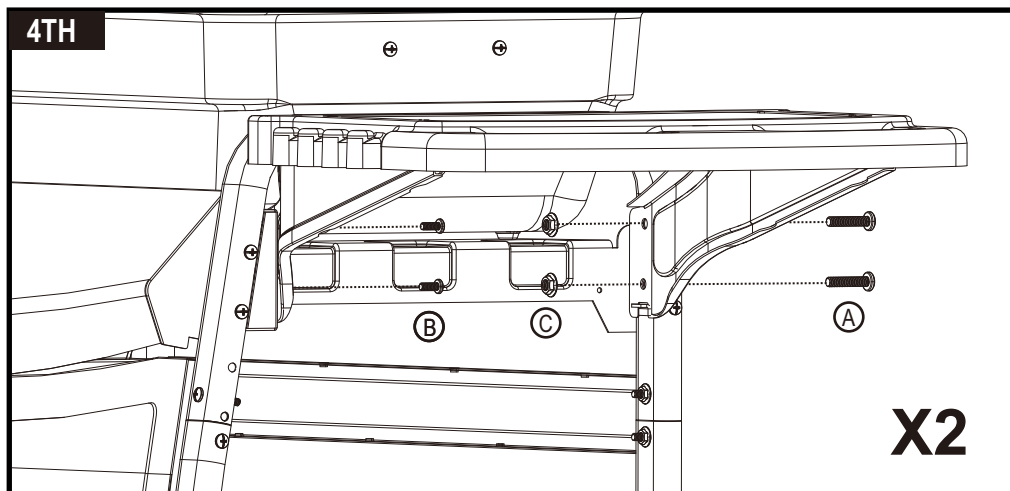
#8x3/8" Sheet Metal Screw
Qty. 4
Vis à tôle n° 8x3/8 po
Qté: 4
Tornillo autorroscante
No. 8 de 3/8"
Cant. 4



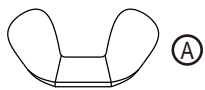
Side Shelf Bushing
Qty. 4
Palier de
tablette latérale
Qté: 4
Manguito para la
repisa lateral
Cant. 4



#10-24x1/2"
Machine Screw
Qty. 4
Vis à métaux
n° 10-24x1/2 po
Qté: 4
Tornillos para metal
No. 10-24 x 1/2"
Cant. 4

1ST**2ND****3RD****4TH**

13



#8-32 Wing Nut
Qty. 1
Écrous à oreilles
n° 8-32
Qté: 1
Tuerca de mariposa
No. 8-32
Cant. 1



#8x3/8"
Sheet Metal Screw
Qty. 3
Vis à tôle n° 8x3/8 po
Qté: 3
Tornillo autorroscante
No. 8 x 3/8"
Cant. 3



#8-32x3/8" Machine Screw
Qty. 2
Vis n° 8x3/8 po
Qté: 2
Tornillo No. 8 x 3/8"
Cant. 2

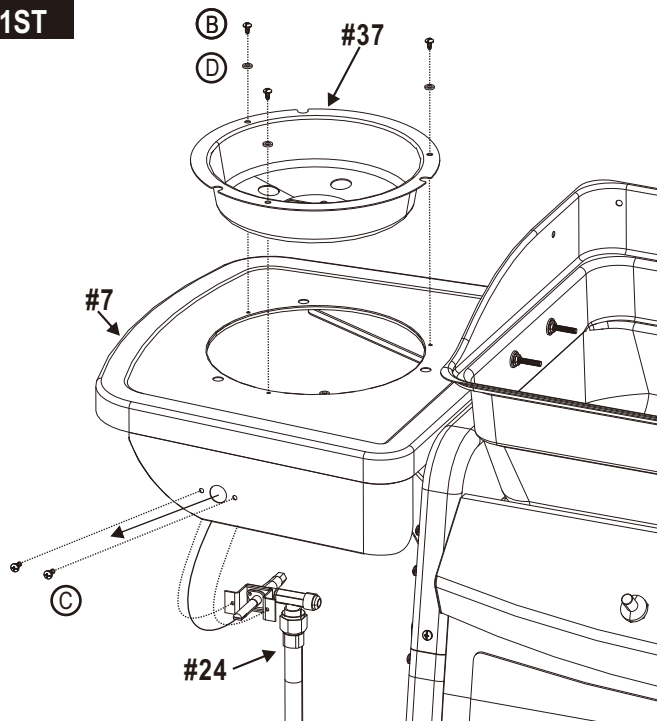


5x9 Fiber washer
Qty. 4
Rondelle en fibre de 5x9
Qté: 4
Arandelas de fibra de 5x9
Cant. 4

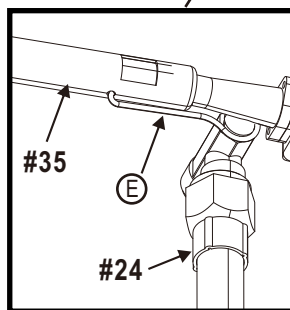
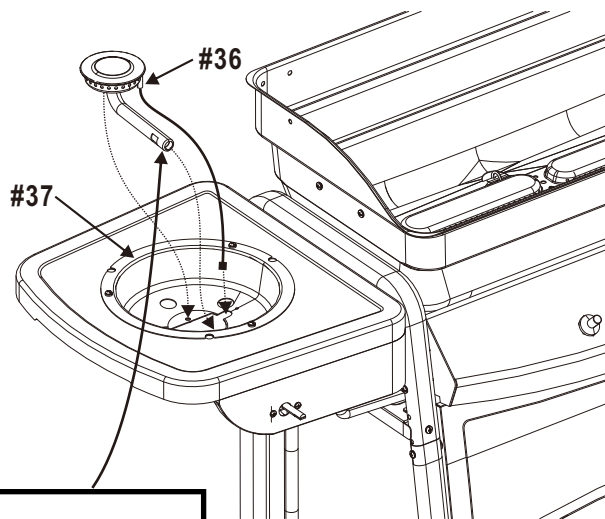


Sideburner Clip
Qty. 1
Agrafe du brûleur latéral
Qté: 1
Presilla, quemador lateral
Cant. 1

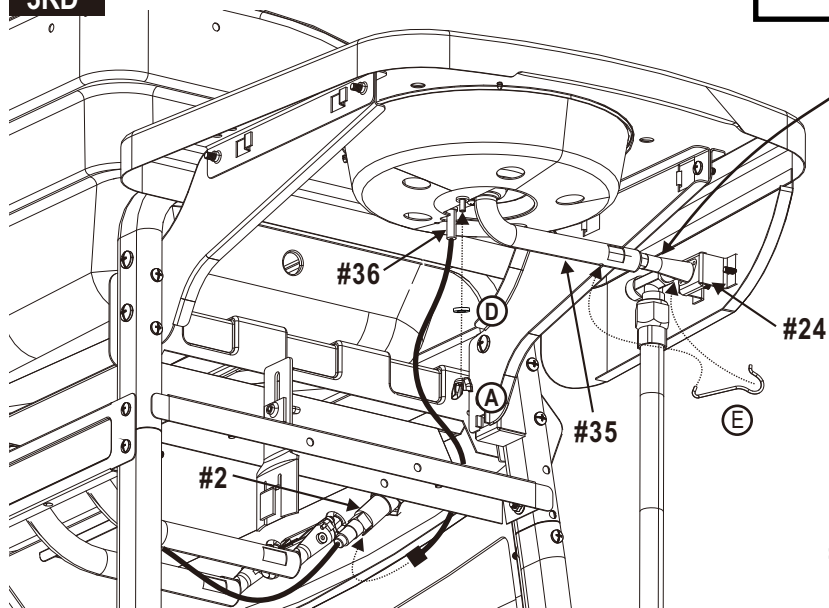
1ST



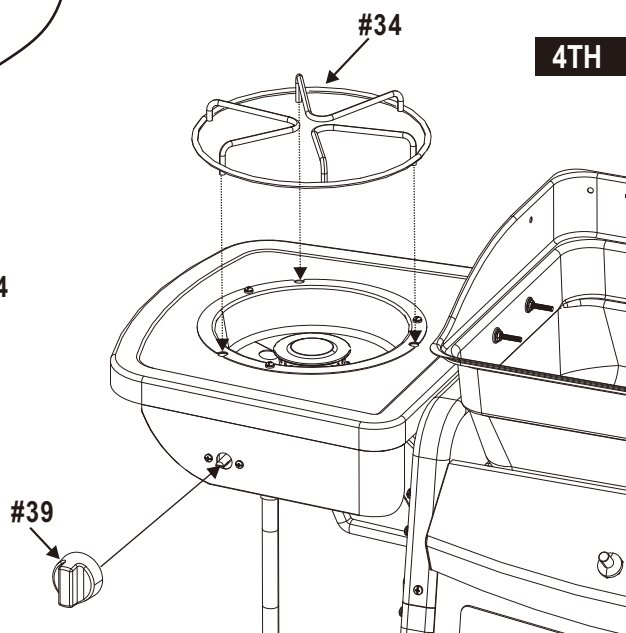
2ND



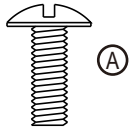
3RD



4TH



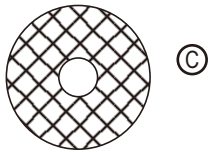
14



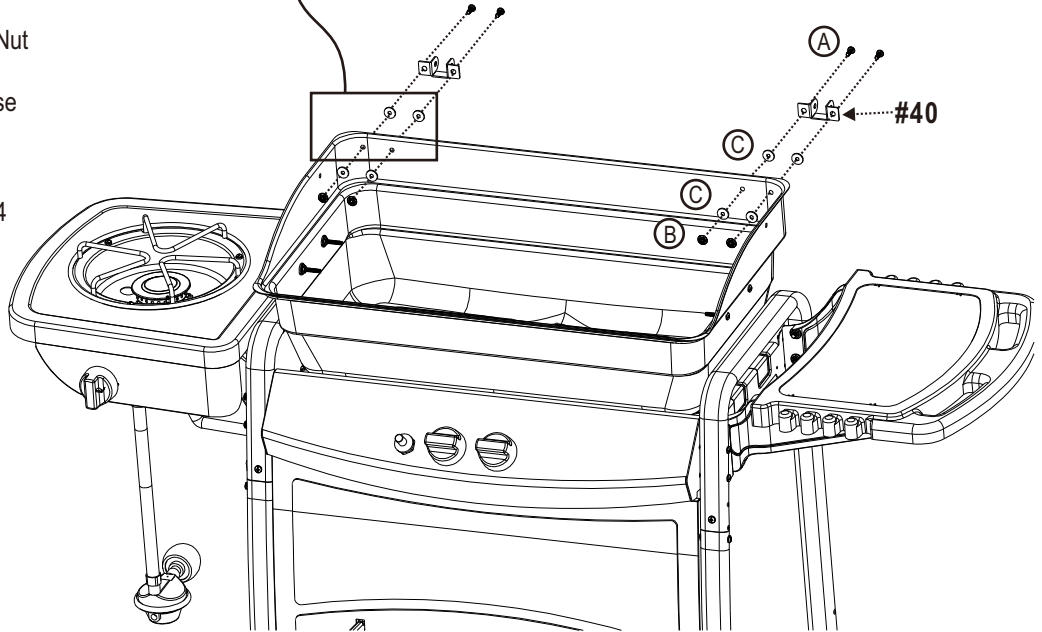
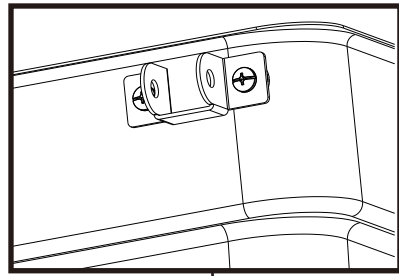
#10-24x1/2"
Machine Screw
Qty. 4
Vis à métaux
n° 10-24x1/2 po
Qté: 4
Tornillos No. 10-24x1/2"
Cant. 4



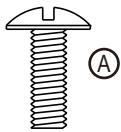
#10-24 Flange Nut
Qty. 4
Écrou à embase
n° 10-24
Qté: 4
Tuercas con
brid No. 10-24
Cant. 4



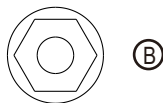
5X15 Fiber Washer
Qty.8
Rondelle en fibre de 5x15
Qté: 8
Arandelas de fibra de 5x15
Cant. 8



15



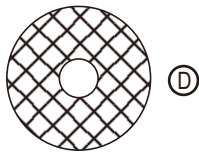
#10-24x1/2"
Machine Screw
Qty. 4
Vis à métaux
n° 10-24x1/2 po
Qté: 4
Tornillos No. 10-24 x 1/2"
Cant. 4



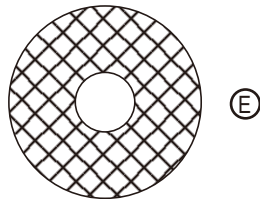
#10-24 Flange Nut
Qty. 4
Écrou à embase
n° 10-24
Qté: 4
Tuercas con brid
No. 10-24
Cant. 4



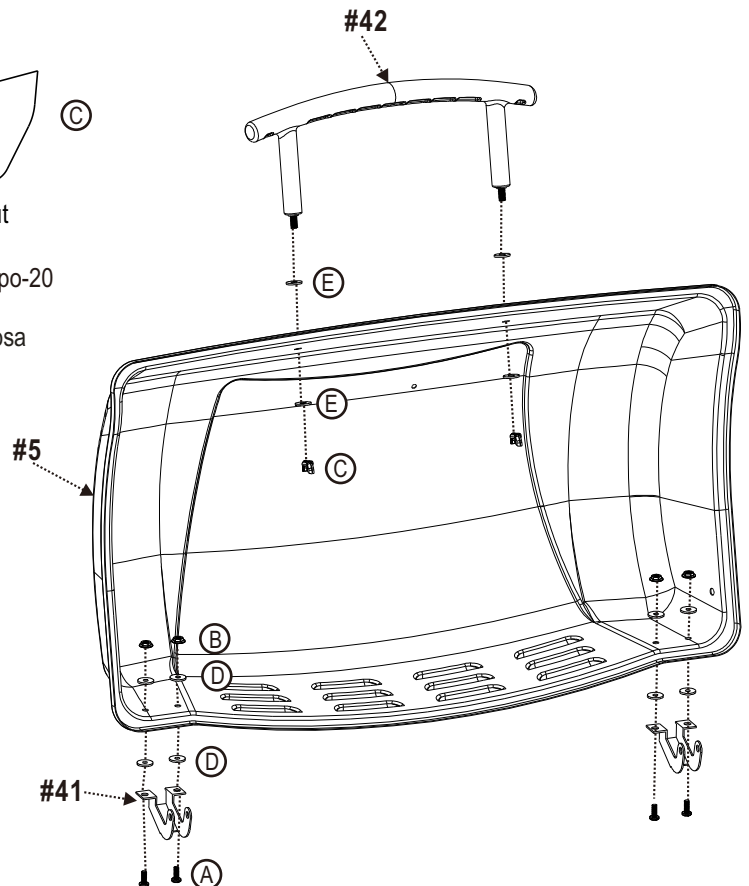
1/4-20 Wing Nut
Qty. 2
Écrou à oreilles 1/4 po-20
Qté: 2
Tuercas de mariposa
de 1/4-20
Cant. 2



5X15 Fiber Washer
Qty. 8
Rondelle en fibre de 5x15
Qté: 8
Arandelas de fibra de 5x15
Cant. 8



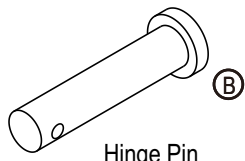
7x15 Fiber Washer
Qty. 4
Rondelle en fibre de 7x15
Qté: 4
Arandelas de fibra de 7x15
Cant. 4



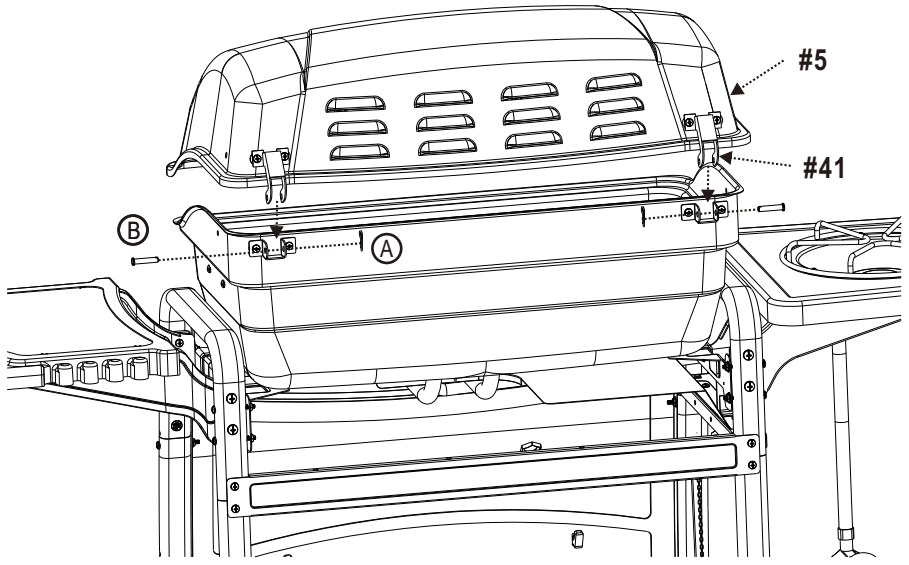
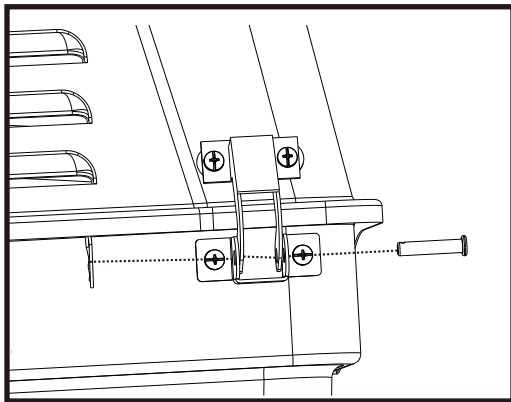
16



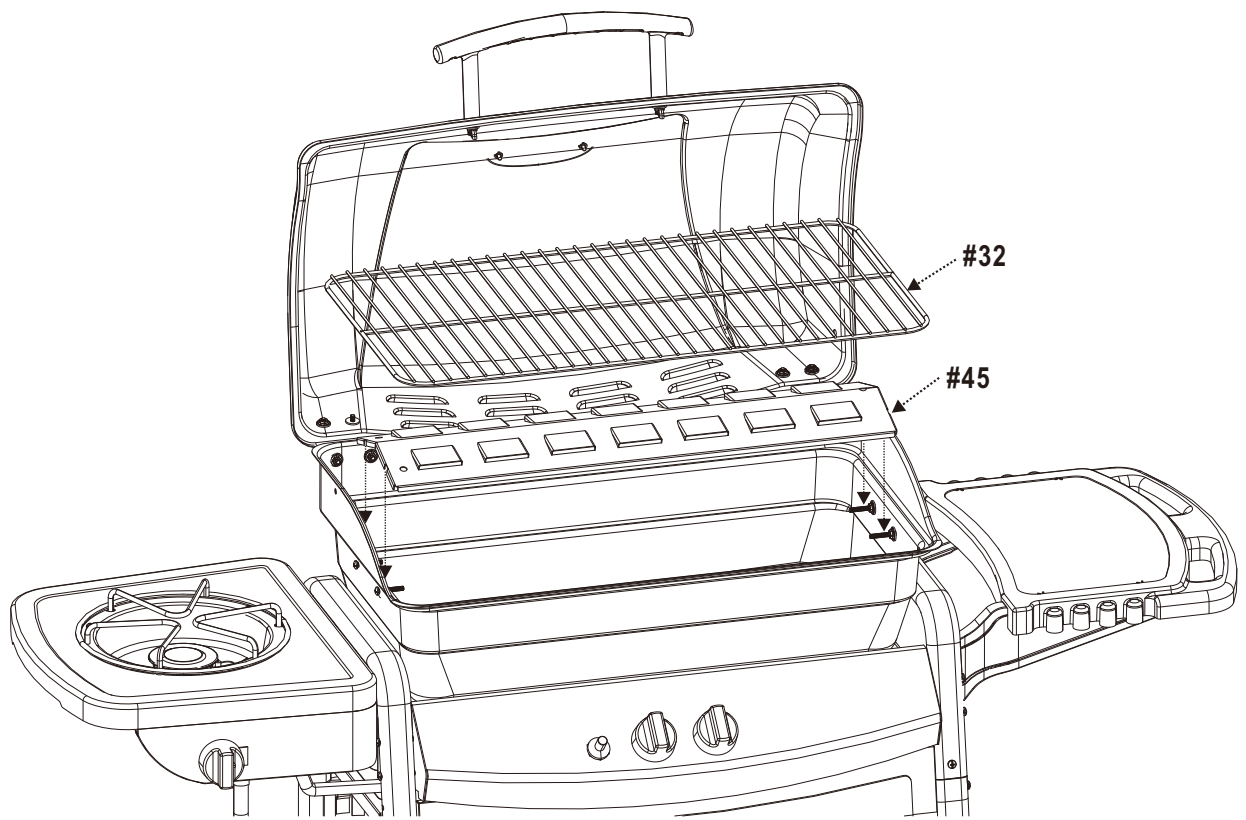
Hitch Pin
Qty. 2
Cheville
Qté: 2
Pasador de acoplamiento
Cant. 2



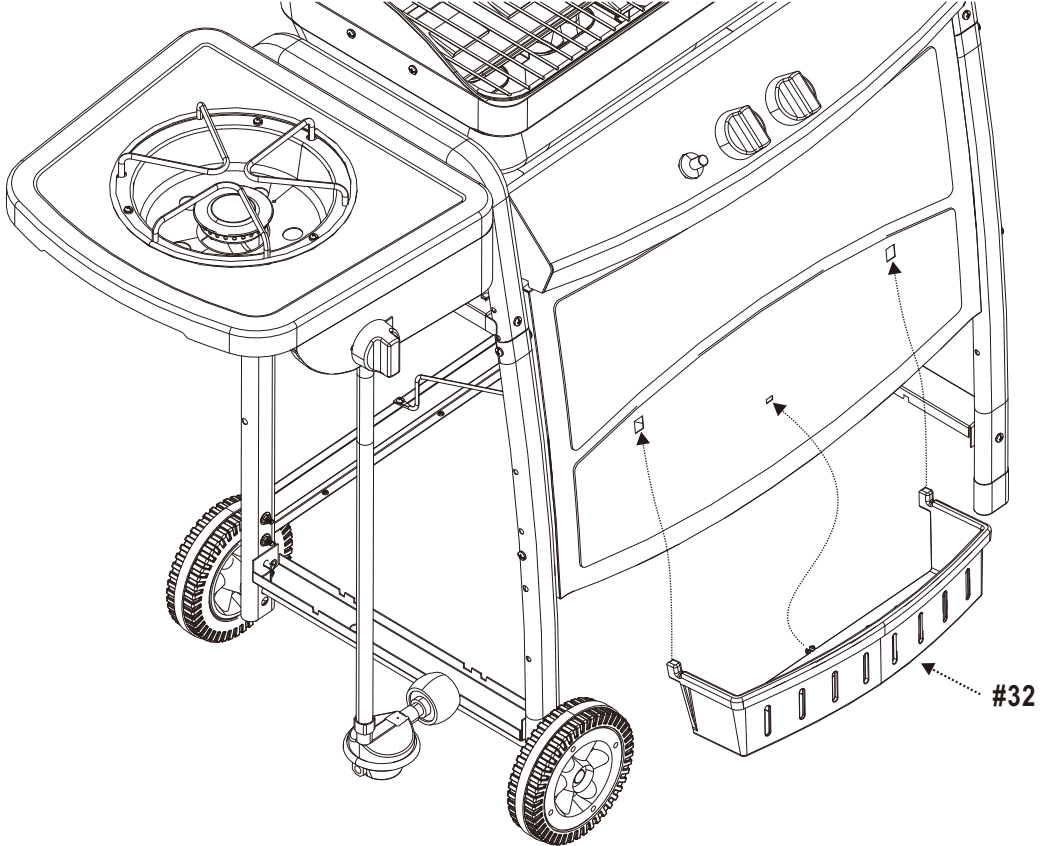
Hinge Pin
Qty. 2
Fiche
Qté: 2
Pasador de articulación
Cant. 2



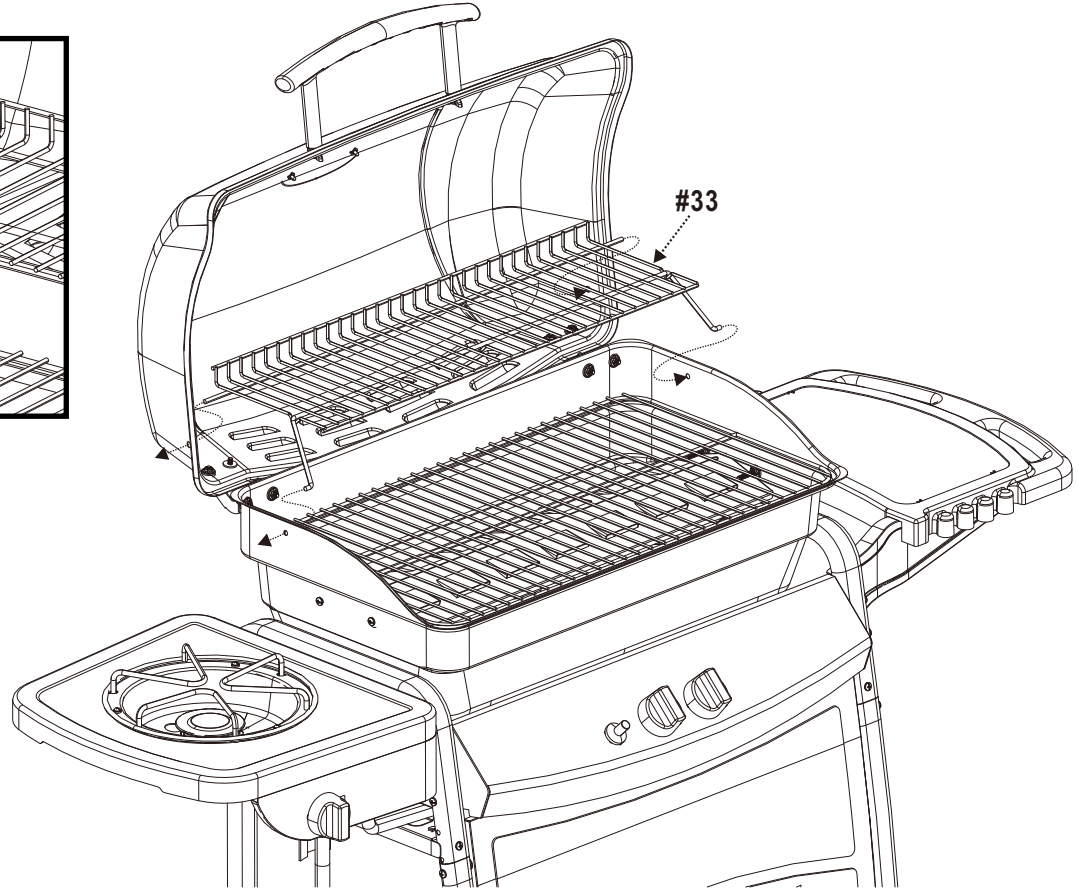
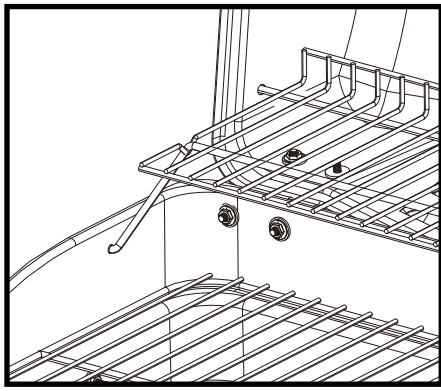
17



18

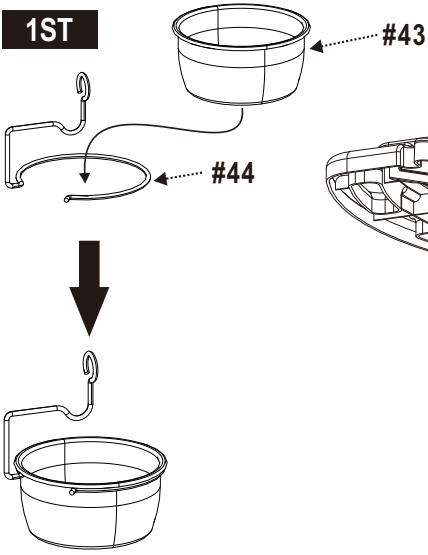


19

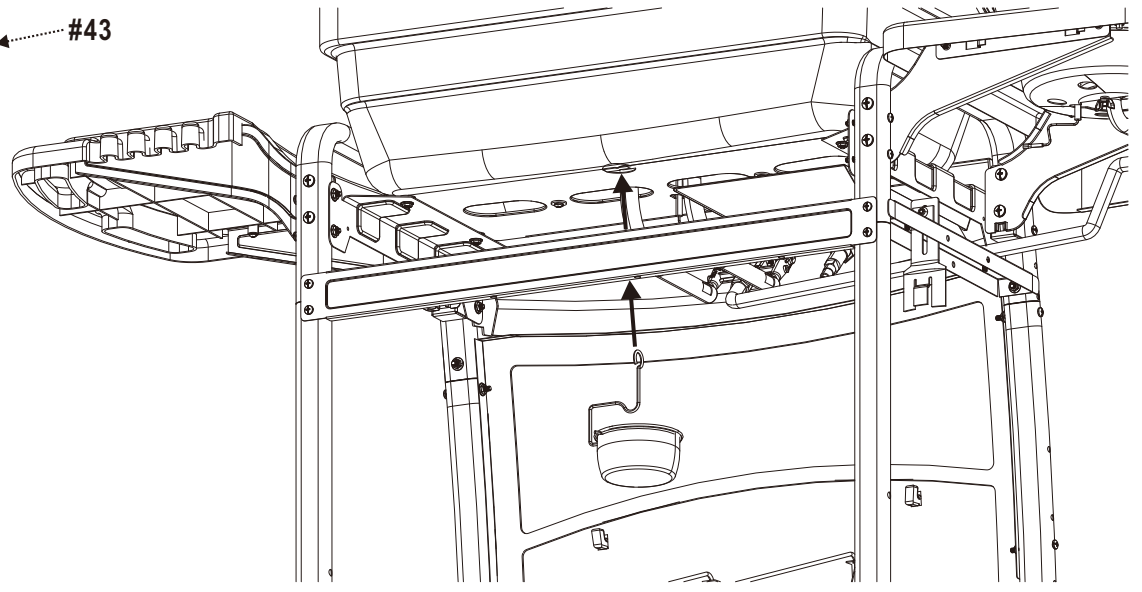


20

1ST

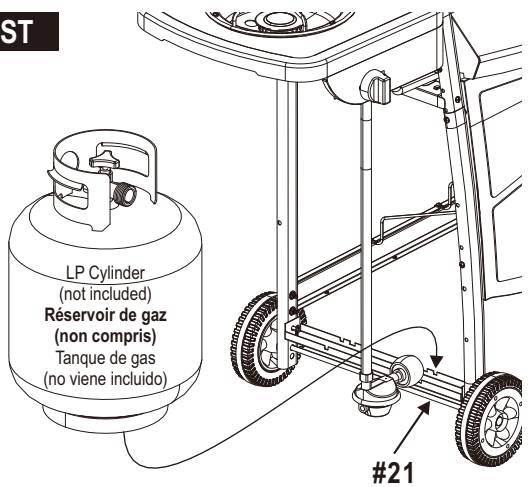


2ND

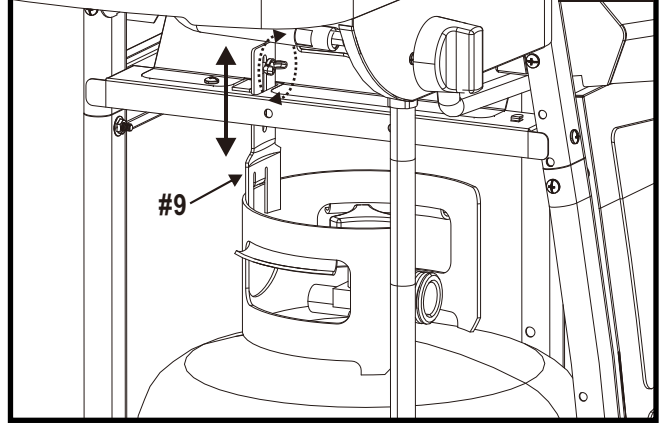


21

1ST



2ND



CAUTION

Cylinder valve must face to front of cart once tank is attached. Failure to install cylinder correctly may allow gas hose to be damaged in operation, resulting in the risk of fire.

ATTENTION

Le robinet du réservoir doit être orienté vers le devant du chariot une fois le réservoir fixé en position. Une mauvaise installation du réservoir pourrait endommager le tuyau à gaz, créant un risque d'incendie.

ADVERTENCIA

Una vez que el tanque haya quedado instalado, la válvula del tanque debe quedar orientada hacia la parte delantera del carrito. Si no se instala correctamente el tanque, se puede dañar la manguera de gas durante el suministro, lo que puede ocasionar el riesgo de incendio.

3RD

