

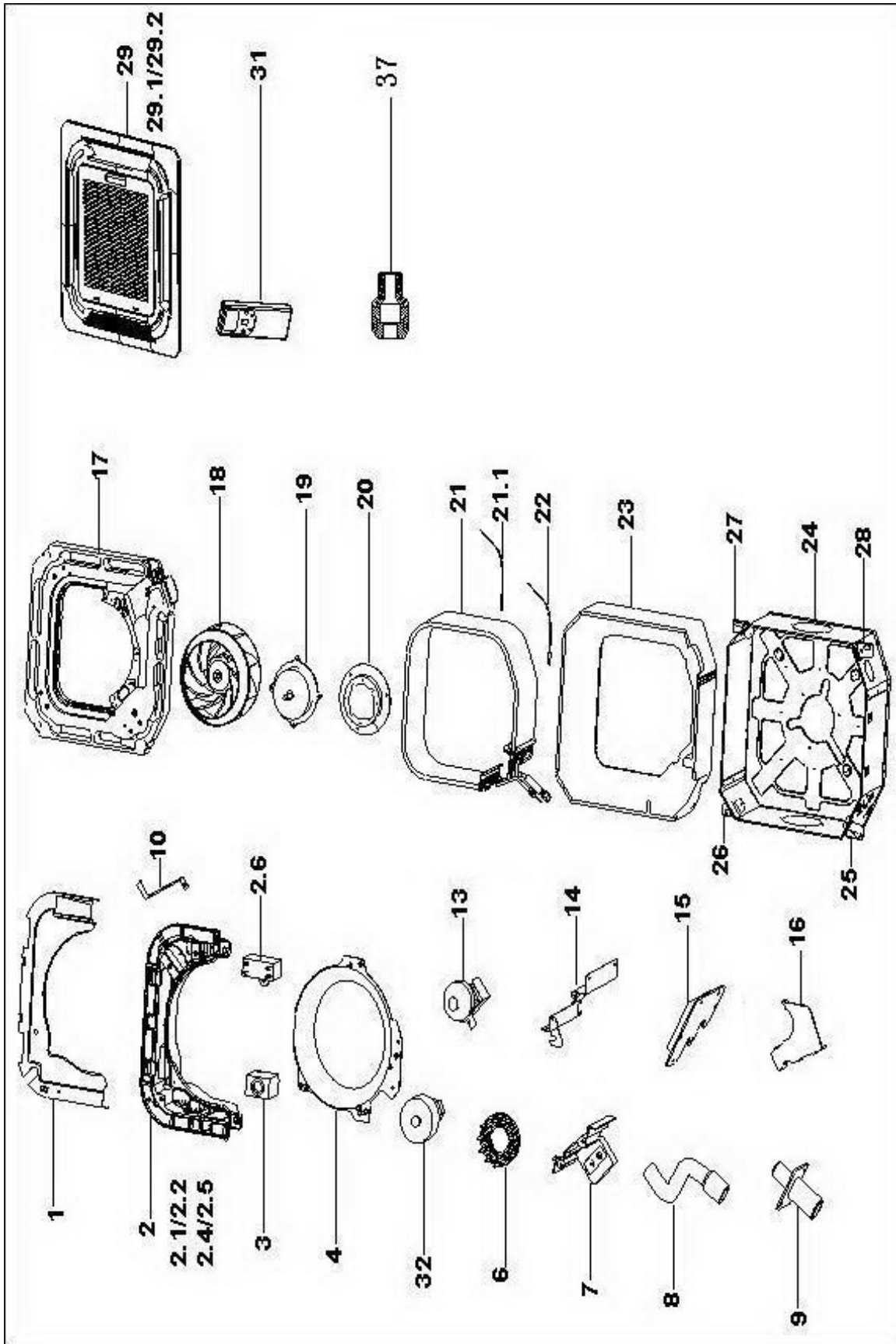
HEAT CONTROLLER, INC.

REPLACEMENT PARTS LIST

Ceiling Cassette

B-VCH12FC-1

EXPLODED VIEW



REPLACEMENT PARTS

Location	Part Name	Quantity	Part No.
1	Cover of electronic control box	1	201280490491
2	Electronic control box assembly	1	203352390016
2.1	Electronic control box	1	201180490043
2.2	Main control board assembly	1	201352390004
2.4	Transformer	1	202300900552
2.5	Wire joint	1	202301420101
2.6	Fan motor capacitor	1	202401190047
3	Capacitor box	1	201280490335
4	Ventilation ring	1	201142390003
6	Guard against block up net	1	201180490041
7	Drain pump installation base	1	201180490049
8	Drain pipe	1	202742390001
9	Drain connecting pipe	1	201142400002
10	Evaporator hang board	1	201280490336
13	Drain pump	1	202400600005
14	Evaporator fixing board	1	201280490337
15	Pipe fixing board assembly	1	201142390001
16	Wire box	1	201180490047
17	Water collector	1	202280490006
18	Centrifugal fan	1	201100110001
19	Asynchronous motor	1	202400410406
20	Fan motor fixing base	1	201280490338
21	Evaporator assembly	1	201542390004
21.1	Pipe temperature sensor assembly	1	202301300445
22	Ambient temperature sensor assembly	1	202301310075
23	Base foam assembly	1	202280490005
24	Chassis assembly	1	201242390003
25	Hook I	1	201280490482
26	Hook II	1	201280490483
27	Hook III	1	201280490484
28	Hook IV	1	201280490485
29	Panel	1	2011099A2005
29.1	Louver motor	1	202400280001
29.2	Display box assembly	1	203342090008
31	Remote controller	1	203355091505
32	Water level switch	1	202301800161
37	Transfer connector	1	201650290241
38	wired controller		2033551A3811
39	install paperboard	1	202680490541
40	nest paperboard	1	2026423A0087
41	accessory bag	1	202880490003
42	accessory carton	1	2026840A0051

Design, material, performance data and components
subject to change without notice.

HEAT CONTROLLER, INC.

1900 Wellworth Ave., Jackson, MI 49203 ♦ Ph. 517-787-2100 ♦ Fax 517-787-9341

THE QUALITY LEADER IN CONDITIONING AIR

www.heatcontroller.com