

---

*Comfort-Aire*®

Century®

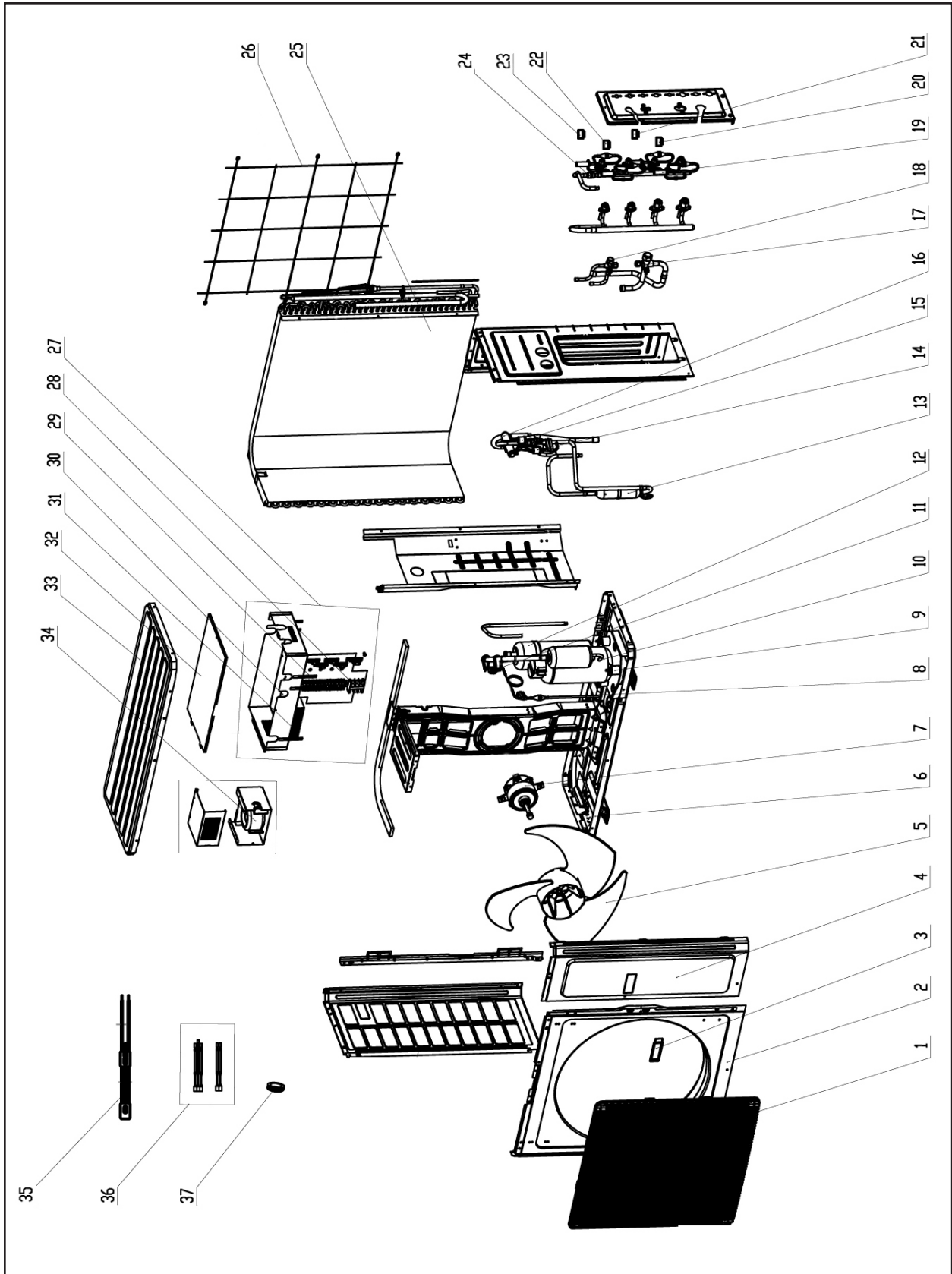
**MARS**  
Delivering Confidence

---

REPLACEMENT PARTS LIST

**InverterFlex Series®**  
**Outdoor Ductless Mini-Split**  
A-VFH36QA-1  
**Heat Pumps**

# EXPLODED VIEW



## REPLACEMENT PARTS

Location	Part Name	Quantity	Part No.
1	Front Grill	1	01473050
2	Cabinet	1	01435004P
3	Left Handle	1	26235401
4	Front Side Plate	1	01305086P
5	Axial Flow Fan	1	10335013
6	Chassis Sub-assy	1	01194100013P
7	Fan Motor	1	15702802
8	Strainer	1	07415200002
9	Compressor Gasket	3	76710207
10	Compressor and Fittings	1	00105036
11	Pressure Protect Switch	1	4602001555
12	Gas-liquid Separator	1	07225015
13	Oil Separator	1	07424118
14	Pressure Protect Switch	1	4602001573
15	Pressure Protect Switch	1	4602000902
16	4-Way Valve	1	43000411
17	Cut-off Valve	1	07334403
18	Cut-off Valve	1	07334402
19	Electronic Expansion Valve	1	07130369
20	Electric Expand Valve Fitting (coil for EEV)	1	4300876710
21	Electric Expand Valve Fitting (coil for EEV)	1	4300876709
22	Electric Expand Valve Fitting (coil for EEV)	1	4300876708
23	Electric Expand Valve Fitting (coil for EEV)	1	4300876707
24	Strainer	1	07212121
25	Condenser Assy	1	01125200193
26	Rear Grill	1	01574100003
27	Electric Box Assy	1	01394100014
28	Terminal Board	1	42011242
29	Terminal Board	4	420111041
30	Main Board	1	30226000025
31	Radiator	1	49018029
32	Electric Box Cover	1	01424263
33	Cabinet top	1	01255006P
34	Reactor	1	43120011
35	electrical heater	1	76518732
36	Sensor Sub-assy	1	39008072
37	Magnet Coil	1	4300040045
	EEV		07334447
-	Remote Control Holder	1	26150008

---

Due to ongoing product improvements, specifications and dimensions are subject to change and correction without notice or incurring obligations. Determining the application and suitability for use of any product is the responsibility of the installer. Additionally, the installer is responsible for verifying dimensional data on the actual product prior to beginning any installation preparations.

Incentive and rebate programs have precise requirements as to product performance and certification. All products meet applicable regulations in effect on date of manufacture; however, certifications are not necessarily granted for the life of a product. Therefore, it is the responsibility of the applicant to determine whether a specific model qualifies for these incentive/rebate programs.

*Comfort-Cire*®  **Century**®

1900 Wellworth Ave., Jackson, MI 49203 • Ph. 517-787-2100 • [www.marsdelivers.com](http://www.marsdelivers.com)

