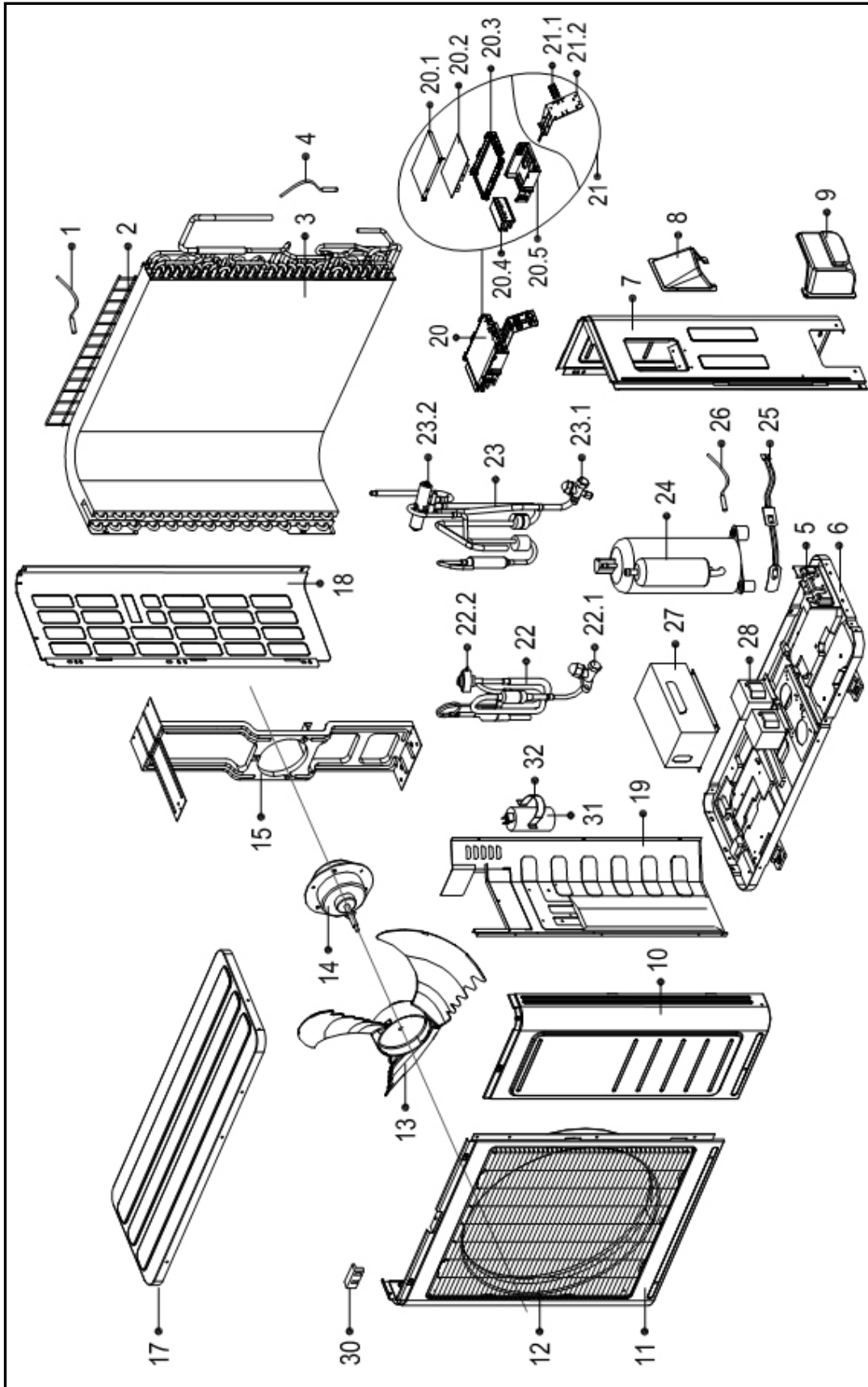


HEAT CONTROLLER

**REPLACEMENT  
PARTS LIST**

**Inverter Series  
Outdoor Ductless Mini-Split  
A-VMH18SD-1  
Heat Pumps**

# EXPLODED VIEW



# REPLACEMENT PARTS

Location	Part Name	Quantity	Part No.
1	Ambient temperature sensor assembly	1	202301310075
2	Rear net	1	201248100375
3	Condenser assembly	1	201537890068
4	Pipe temperature sensor assembly	1	202440500004
5	Valve plate	1	201237300316
6	Chassis assembly	1	201257090054
7	Rear right clapboard assembly	1	201237890100
8	Big handle	1	201237390104
9	Water collector	1	201137390017
10	Front right clapboard assembly	1	201248100389
11	Front panel	1	201248100356
12	Air outlet grille	1	201237890112
13	Axial flow fan	1	201100300553
14	Brushless DC Motor	1	202400300535
15	Supporter assembly of fan motor	1	201257090067
17	Top cover assembly	1	201248100363
18	Left supporter	1	201248100364
19	Partition board assembly	1	201237790031
20	Electronic control box assembly	1	203337890346
20.1	Cover of electronic control box	1	201237300162
20.2	Outdoor main control board assembly	1	201337890039
20.3	Support of electronic control box	1	201137300162
20.4	Radiator	1	202301900112
20.5	Electronic installing box	1	201237300318
21	Terminal board assembly	1	203337990161
21.1	Wire joint	1	202301400256
21.2	Terminal board	1	201237890064
22	Liquid valve assembly	1	201637891245
22.1	Liquid valve	1	201600700078
22.2	Electronic expansion valve assembly	1	201601300554
23	4-ways valve assembly	1	201637891247
23.1	Gas valve	1	201600720194
23.2	4-ways valve	1	201600690011
24	Compressor	1	201400603269
25	Crankcase electric heater	1	202403100501
26	Discharge temperature sensor assembly	1	202301310068
27	Cover of inductance	1	201248090001
28	Reactor	1	202301000820
28	Reactor	1	202301000819
30	Clamp of front net	8	201135110801
31	Capacitor of compressor	1	202401000078
32	Capacitor clip	1	201200100002
	Carton		2026378A2062
(not shown)	rubber boot for condenser feet	1	1260040100001

Due to ongoing product improvements, specifications and dimensions are subject to change and correction without notice or incurring obligations. Determining the application and suitability for use of any product is the responsibility of the installer. Additionally, the installer is responsible for verifying dimensional data on the actual product prior to beginning any installation preparations.

Incentive and rebate programs have precise requirements as to product performance and certification. All products meet applicable regulations in effect on date of manufacture; however, certifications are not necessarily granted for the life of a product. Therefore, it is the responsibility of the applicant to determine whether a specific model qualifies for these incentive/rebate programs.

# HEAT CONTROLLER

1900 Wellworth Ave., Jackson MI 49203 • Ph. 517-787-2100 • [www.heatcontroller.com](http://www.heatcontroller.com)

A  Company