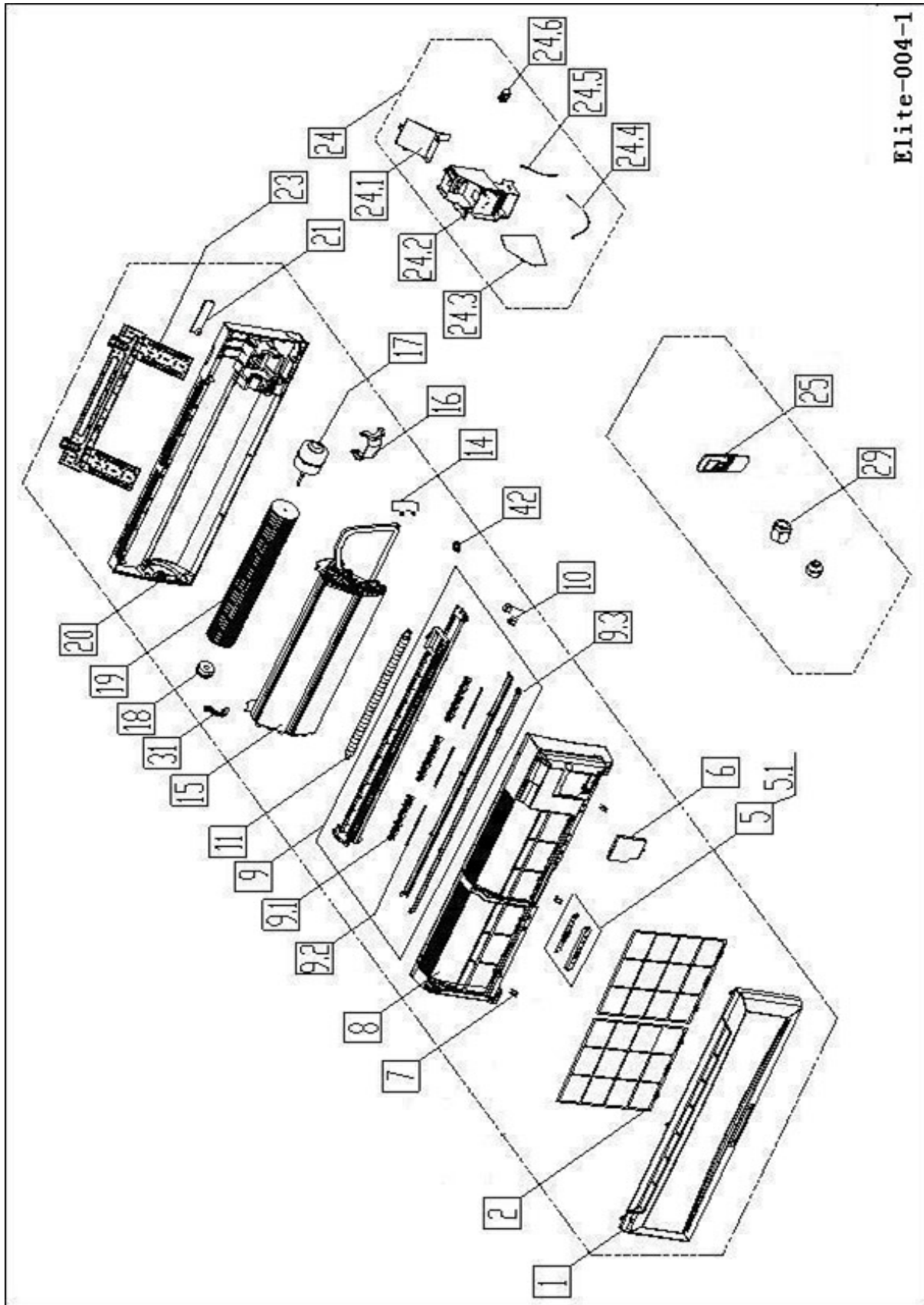


HEAT CONTROLLER, INC.

REPLACEMENT PARTS LIST

**Single Zone Cooling Only
Ductless Mini-Splits
B-SMA12SC
Indoor Evaporator**

EXPLODED VIEW



Elite-004-1

REPLACEMENT PARTS

Location	Part Name	Quantity	Part No.
1	Panel assembly	1	2011327A1861
2	Air filter	2	201130290162
5	Display box assembly	1	203332790077
5.1	Display board assembly	1	201332790089
6	Cover of indoor electronic control box	1	201130290288
7	Screw cap	3	201132790396
8	Panel frame assembly	1	201132790398
9	Air outlet assembly	1	201132790397
9.1	Vertical vane	12	201130290212
9.2	Louver holder	3	201130210066
9.3	Horizontal louver	1	201132790582
9.3	Horizontal louver	1	201132790581
10	Louver motor	1	202400200025
11	Drain hose	1	201101020038
14	Waterproof board	1	201130310350
15	Evaporator assembly	1	201532890111
16	Fan motor cover	1	201132800135
17	Asynchronous motor	1	202400300045
18	Bearing base	1	202732400001
19	Cross flow fan	1	201100200014
20	Chassis assembly	1	201132800120
21	Pipe clamp board	1	201130100204
23	Installation plate	1	201232400000
24	Electronic control box assembly	1	203332590052
24.1	Cover of electronic control box	1	201132800161
24.2	Electronic control box	1	201130210069
24.3	Main control board assembly	1	201332590287
24.4	Indoor temperature sensor assembly	1	202432390005
24.5	Pipe temperature sensor assembly	1	202301300584
24.6	Wire joint	1	202301400064
25	Remote Controller	1	203355091201
29	Nut	1	201600320002
29	Nut	1	201600320000
31	Fixing board of bear	1	201130510515
42	Fix clamp of temperature sensor	1	201102000305

Design, material, performance data and components
subject to change without notice.

HEAT CONTROLLER, INC.

1900 Wellworth Ave., Jackson, MI 49203 ♦ Ph. 517-787-2100 ♦ Fax 517-787-9341

THE QUALITY LEADER IN CONDITIONING AIR

www.heatcontroller.com