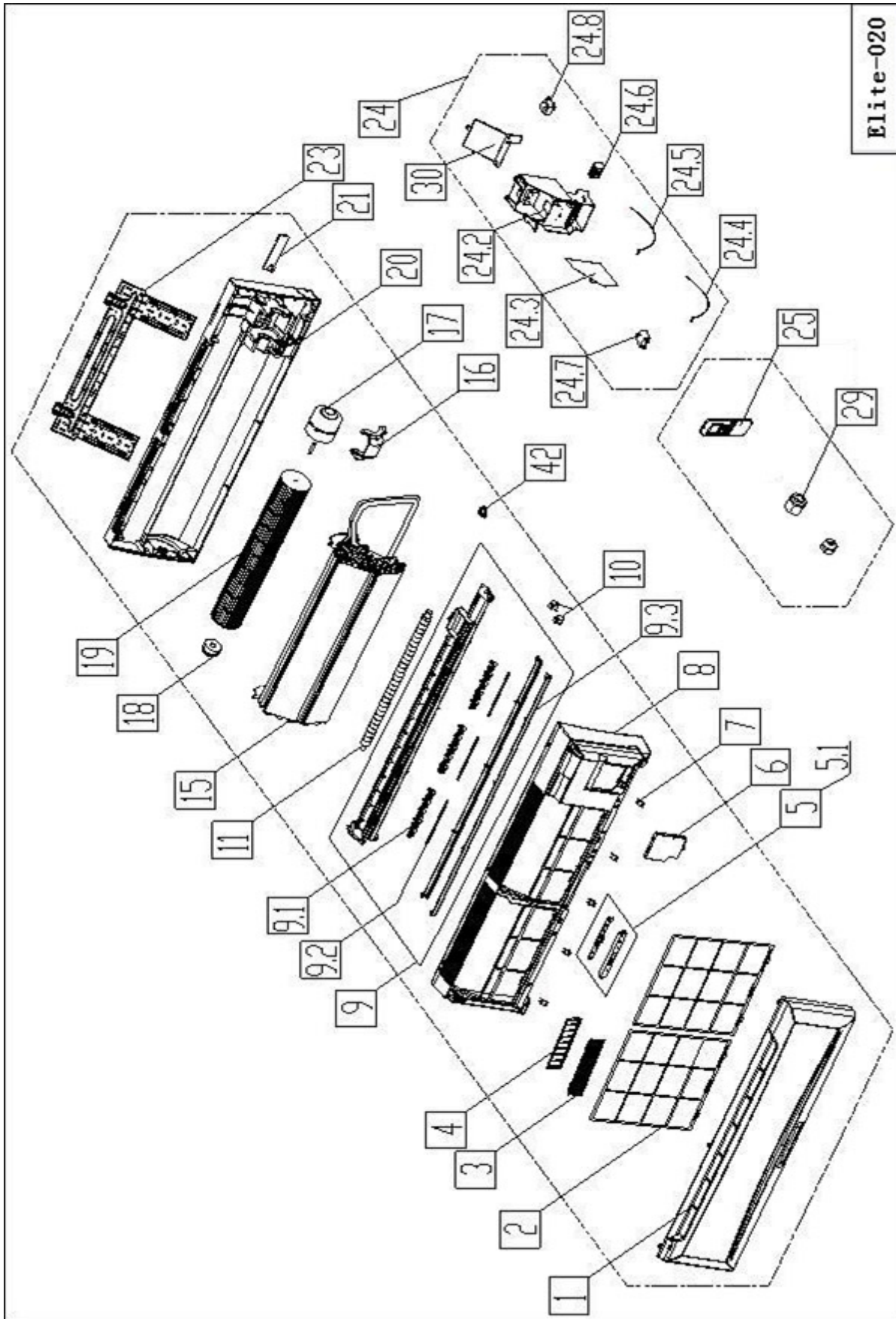


HEAT CONTROLLER, INC.

REPLACEMENT PARTS LIST

**Single Zone Cooling Only
Ductless Mini-Splits
B-SMA18SC
Indoor Evaporator**

EXPLODED VIEW



REPLACEMENT PARTS

Location	Part Name	Quantity	Part No.
1	Panel assembly	1	2011330A2331
2	Air filter	2	201130790315
5	Display box assembly	1	203332790077
5.1	Display board assembly	1	201332790089
6	Cover of indoor electronic control box	1	201130790486
7	Screw cap	3	201133090792
8	Panel frame assembly	1	201133090791
9	Air outlet assembly	1	201133090790
9.1	Vertical vane	15	201130790570
9.2	Louver holder	3	201130790145
9.3	Horizontal louver	1	201133090553
9.3	Horizontal louver	1	201133090554
10	Louver motor	1	202400200004
11	Drain hose	1	201101020038
15	Evaporator assembly	1	201532890105
16	Fan motor cover	1	201130790483
17	Asynchronous motor	1	202400400904
18	Bearing base	1	202730790001
19	Cross flow fan	1	201100290010
20	Chassis assembly	1	201133090793
21	Pipe clamp board	1	201230790016
23	Installation plate	1	20123309G010
24	Electronic control box assembly	1	203332890016
24.2	Electronic control box	1	201133090079
24.3	Main control board assembly	1	201332890059
24.4	Indoor temperature sensor assembly	1	202433190000
24.5	Pipe temperature sensor assembly	1	202301300584
24.6	Wire joint	1	202301400064
24.7	Fan motor capacitor	1	202401100353
24.8	Transformer	1	20230090a170
25	Remote Controller	1	203355091201
29	Nut	1	201600320002
29	Nut	1	201600320000
30	Cover of electronic control box	1	201130790479
42	Fix clamp of temperature sensor	1	201102000305

Design, material, performance data and components
subject to change without notice.

HEAT CONTROLLER, INC.

1900 Wellworth Ave., Jackson, MI 49203 ♦ Ph. 517-787-2100 ♦ Fax 517-787-9341

THE QUALITY LEADER IN CONDITIONING AIR

www.heatcontroller.com