

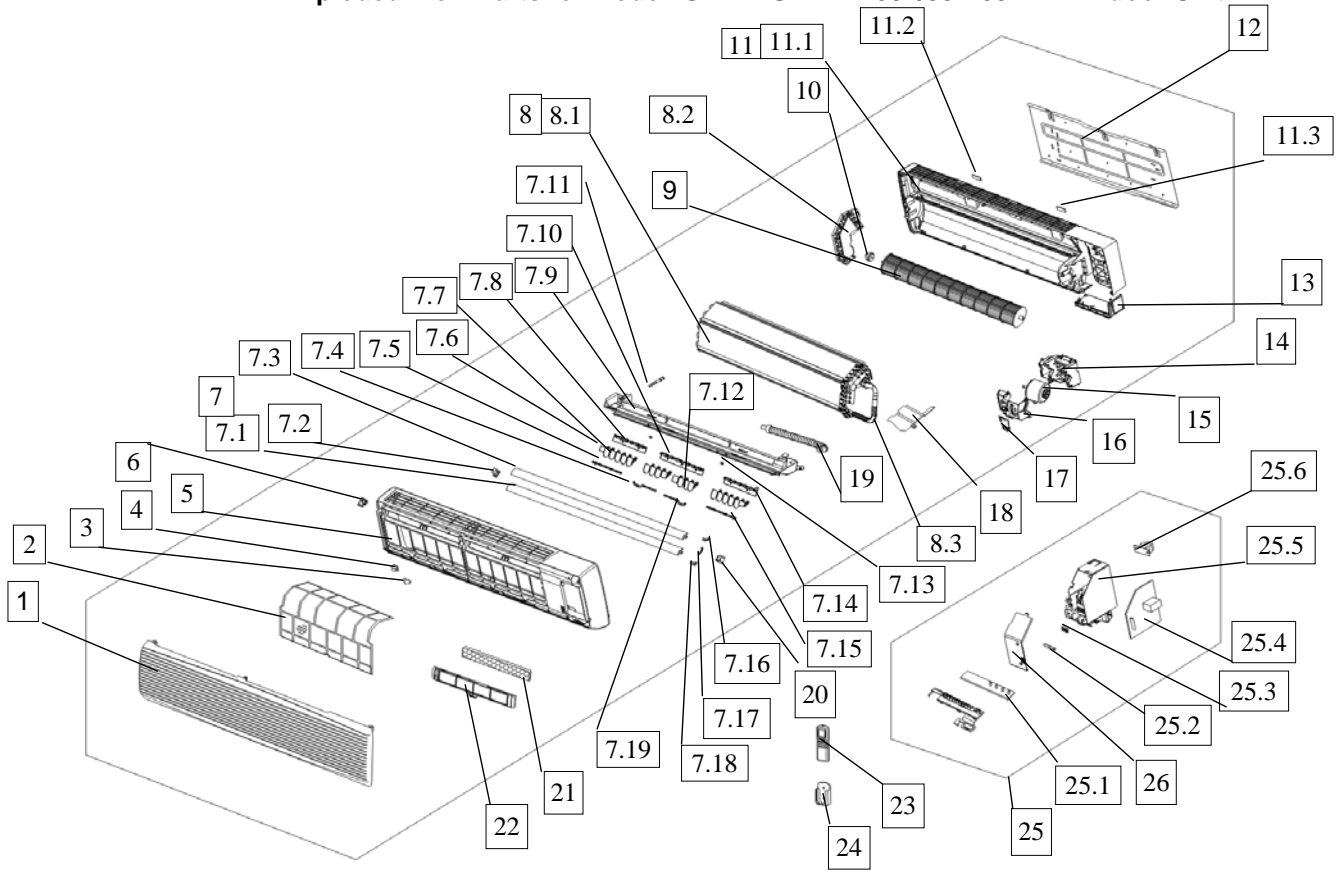
HEAT CONTROLLER, INC.

REPLACEMENT
PARTS

SMA24SA-1

**Mini-Split Air Conditioner
Cooling Only**

Exploded View Parts for Model: SMA24SA-1 2082/30V 60Hz Indoor Unit



SMA24SA-1 Indoor Unit

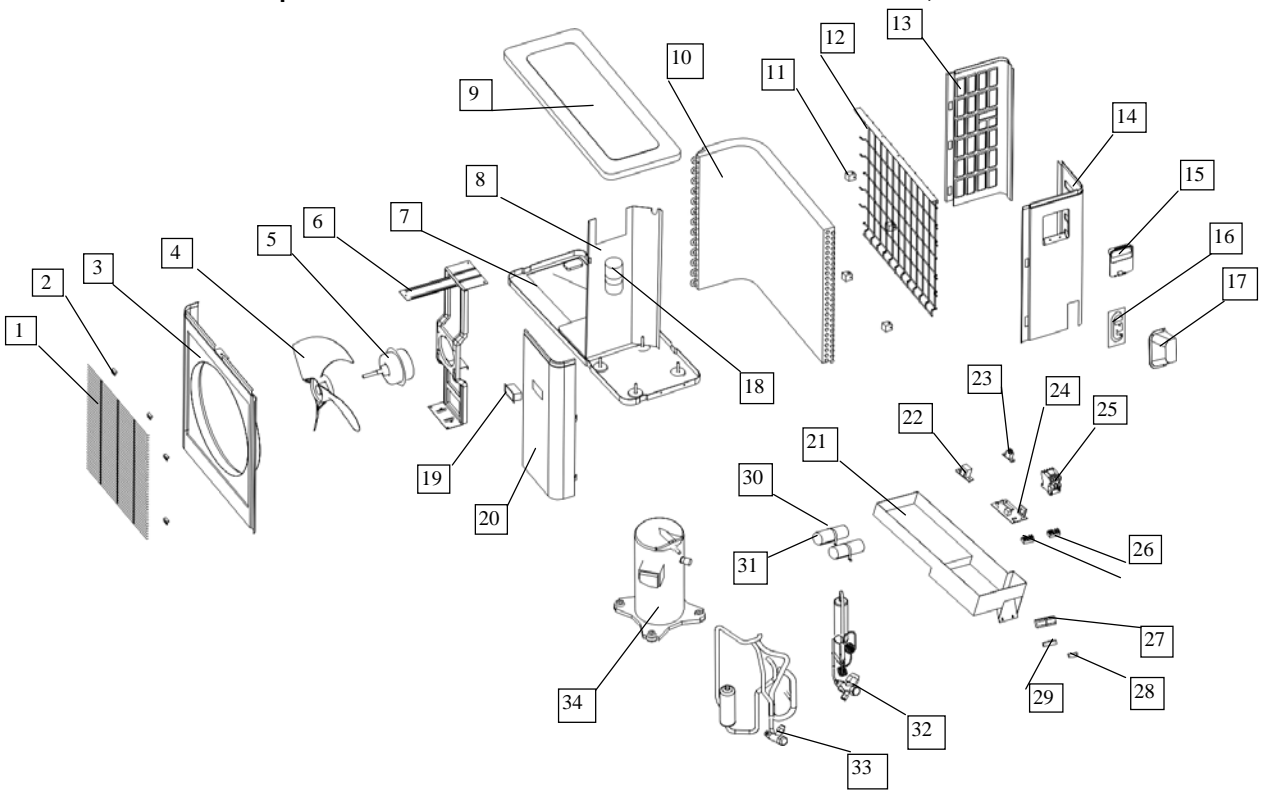
No	Name	Quantity	Part Number
1	Front panel	1	10336111001
2	Air filter	2	10336111002
3	Screw cap	3	10336111003
4	Down clap for panel frame	4	10336111004
5	Panel frame	1	10336111005
6	Up clap for panel frame	2	10336111006
7	Air out frame assy	1	10336111007
7.1	Horizontal louver, down	1	10336111008
7.2	Left bush for horizontal louver	1	10336111009
7.3	Horizontal louver, up	1	10336111010
7.4	Louver connector, middle-left	1	10336111011
7.5	Louver connector, left	1	10336111012
7.6	Vertical louver, small size	2	10336111013
7.7	Vertical louver, large size	12	10336111014
7.8	Louver holder, left	1	10336111015
7.9	Air out frame	1	10336111016
7.10	Louver holder, middle	1	10336111017
7.11	Stopple	1	10336111018
7.12	Vertical louver, middle size	2	10336111019
7.13	Bush	4	10336111020
7.14	Louver holder, right	1	10336111021
7.15	Louver connector, right	1	10336111022
7.16	Swing bar for up horizontal louver	1	10336111023
7.17	Connector for horizontal louver	1	10336111024
7.18	Swing bar for down horizontal louver	1	10336111025
7.19	Louver connector, middle-right	1	10336111026
8	Evaporator assy	1	10336111079
8.1	Evaporator I	1	10336111063
	Evaporator II	1	10336111064
	Evaporator III	1	10336111065
	Evaporator IV	1	10336111066
	Right holder for evaporator	1	10336111032
8.2	Left holder for evaporator	1	10336111033
8.3	Input pipe for evaporator	1	10336111075
	Output pipe for evaporator	1	10336111076
9	Cross flow fan, assy	1	10336111036
10	Bearing holder	1	10336111037
11	Chassis assy	1	10336111038
11.1	Chassis	1	10336111039
11.2	Left rear cover for chassis	1	10336111040

SMA24SA-1 Indoor Unit

No	Name	Quantity	Part Number
11.3	Right rear cover for chassis	1	10336111041
12	Installation plate	1	10336111042
13	Corner board for chassis	1	10336111043
14	Base for motor	1	10321111066
15	Fan motor	1	10321111067
16	Cover for motor	1	10321111068
17	Small cover for motor	1	10336111047
18	Waterproof board	1	10330112015
19	Drain hose	1	10109121215
20	Louver motor	1	10336111050
21	Air cleaner	1	10336111051
22	Air cleaner holder	1	10336111052
23	Remote controller (FAHRENHEIT)	1	10312121268
24	Holder for remote controller	1	10109121208
25	E-parts assy	1	10321111069
25.1	Display board	1	10336111054
25.2	Wire joint, 4p	1	10609111006
25.3	Wire clamp	1	10336111056
25.4	Main control board	1	10321111070
25.5	E-Parts box	1	10321111071
25.6	Transformer	1	10118121232
25.7	Indoor temp sensor	1	10109121243
25.8	Evaporator temp sensor	1	10109121242
26	E-part box cover	1	10321111072
27	Clamp for temp sensor	1	10109121231
28	Protector for temp sensor	1	10112121224
29	Copper nut, GLM-D04	1	11324113804
30	Copper nut, GLM-B02	1	10909121013

Part Name	Quantity	Part Number
Remote Controller (CELSIUS)	1	10109111203

Exploded View Parts for Model SMA24SA-1 208/230V,60Hz : Outdoor Unit



SMA24SA-1 Outdoor Unit

No.	Part Name	Quantity	Part Number
1	Front net	1	10118121801
2	Clamp for front net	8	10112121801
3	Front clapboard	1	10336121801
4	Propeller fan	1	10336111801
5	Fan motor	1	10321111818
6	Holder for fan motor	1	10336121802
7	Chassis	1	10336111820
8	Separating board	1	50224123803
9	Cover	1	10336121803
10	Condenser	1	10336111824
11	Underlay for rear net	4	10118121818
12	Rear net	1	10224121813
13	Left clapboard	1	10224121828
14	Rear right clapboard	1	10318121016
15	Big handle	1	10309121003
16	Installation plate for valves	1	11426432807
17	Water collector	1	10336111804
18	Refrigerant container	1	10224121817
19	Small handle	1	10224121809
20	Front right clapboard	1	10224121825
21	Installation board for E-parts	1	10318121017
22	Transformer	1	11018121010
23	Fan motor capacitor	1	10718121804
24	Main control board	1	15021111803
25	Contacting	1	10121121806
26	Wire joint for multiplexer	1	10121121809
27	Wire joint	1	10309121011
28	Clamp for wiring	1	10118121823
29	Washer for wire joint	1	10112121817
30	Capacitor clamp	2	31116313015
31	Compressor capacitor	2	10118121820
32	Liquid pipe valve,assy	1	10321111819
	Liquid pipe valve	1	10336111827
33	Gas pipe valve,assy	1	10321111820
	Gas pipe valve	1	10321111821
34	Compressor	1	10321111822
35	Copper nut, TLM-D04	1	11324113804
36	Copper nut, TLM-B02	1	10909121013

**Design, material, performance data and components
subject to change without notice.**

HEAT CONTROLLER, INC.

1900 Wellworth Ave Jackson, Michigan 49203 • Ph. 517-787-2100 • Fax 517-787-9341

THE QUALITY LEADER IN CONDITIONING AIR

www.heatcontroller.com