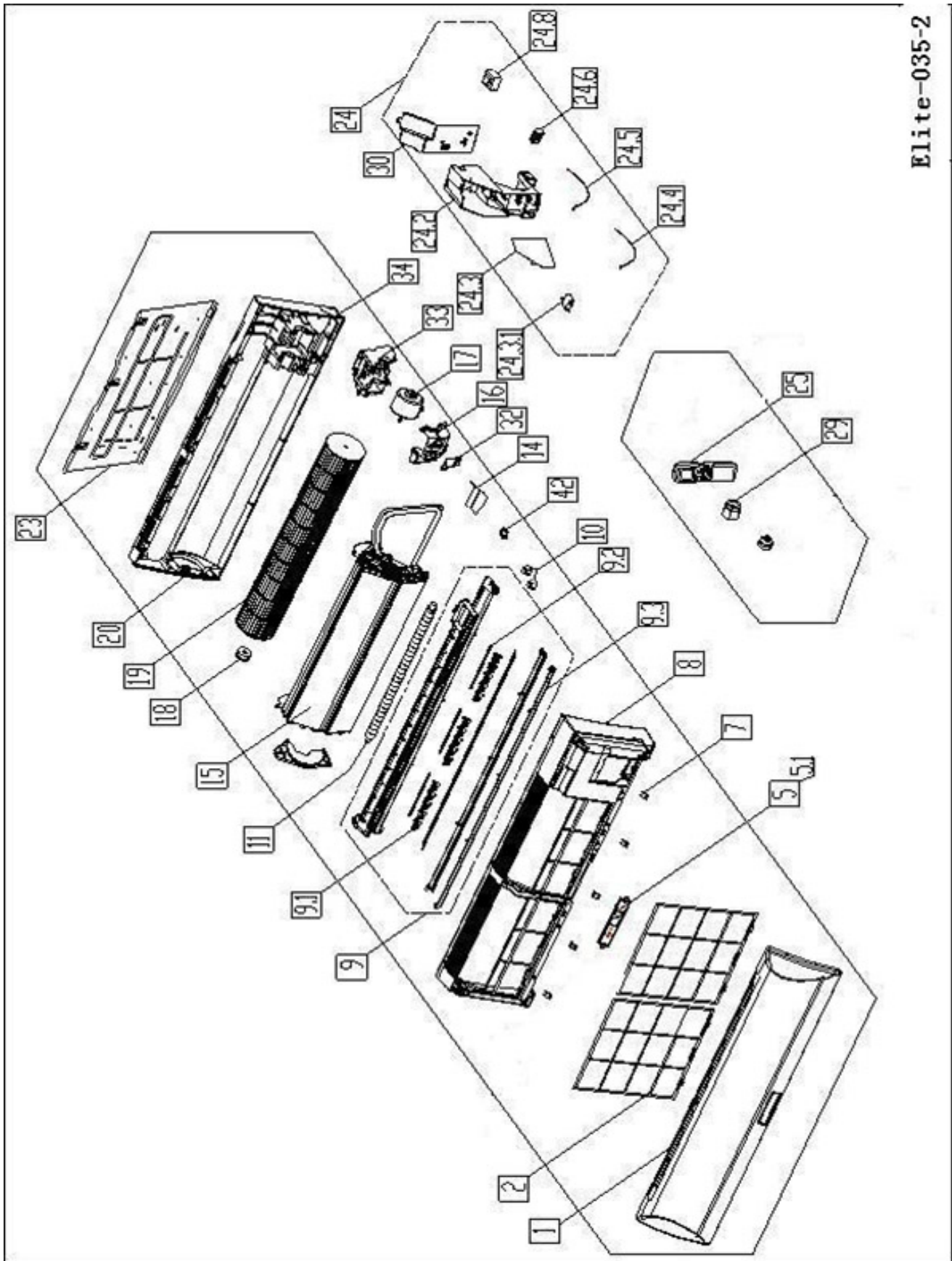


HEAT CONTROLLER, INC.

REPLACEMENT PARTS LIST

**Single Zone Cooling Only
Ductless Mini-Splits
B-SMA24SC
Indoor Evaporator**

EXPLODED VIEW



Elite-035-2

REPLACEMENT PARTS

Location	Part Name	Quantity	Part No.
1	Panel assembly	1	2011331A0431
2	Air filter	2	201130790202
5	Display box assembly	1	203333190012
7	Screw cap	5	201133190148
8	Panel frame assembly	1	201133190124
9	Air outlet assembly	1	201133190090
9.3	Horizontal louver	1	201133190115
9.3	Horizontal louver	1	201133190113
10	Louver motor	1	202400200004
11	Drain hose	1	201101020038
14	Waterproof board	1	201130790203
15	Evaporator assembly	1	201533190090
16	Fan motor cover	1	201133090035
17	Asynchronous motor	1	202400410657
18	Bearing base	1	201101090004
19	Cross flow fan	1	201100290011
20	Chassis assembly	1	201133190161
23	Installation plate	1	201233190002
24	Electronic control box assembly	1	203333090164
24.2	Electronic control box	1	201133090113
24.3	Main control board assembly	1	201333090025
24.3.1	Fan motor capacitor	1	202401290009
24.4	Indoor temperature sensor assembly	1	202432390005
24.5	Pipe temperature sensor assembly	1	202301300584
24.6	Wire joint	1	202301420101
24.8	Transformer	1	20230090a170
25	Remote Controller	1	203355091209
29	Nut	1	201600320003
29	Nut	1	201600320001
30	Cover of electronic control box	1	201133090112
32	Small cover of fan motor	1	201130790124
33	Base of fan motor	1	201133090034
34	Chassis front cover	1	201133190089
42	Fix clamp of temperature sensor	1	201102000305

Design, material, performance data and components
subject to change without notice.

HEAT CONTROLLER, INC.

1900 Wellworth Ave., Jackson, MI 49203 ♦ Ph. 517-787-2100 ♦ Fax 517-787-9341

THE QUALITY LEADER IN CONDITIONING AIR

www.heatcontroller.com