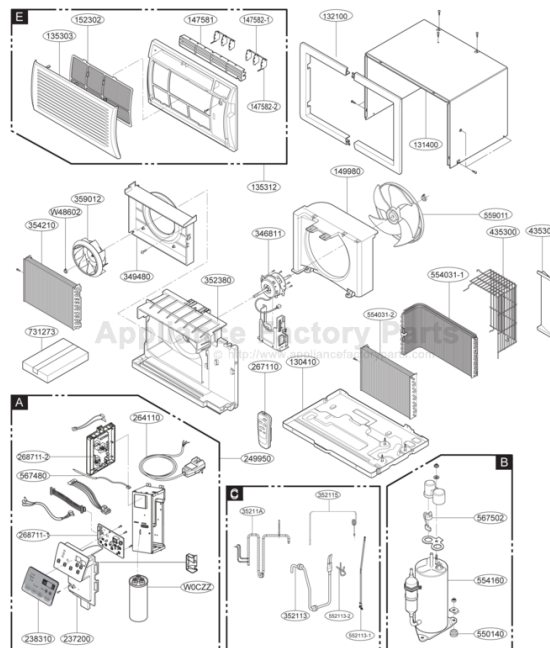


This Owner's Manual is provided and hosted by [Appliance Factory Parts](http://ApplianceFactoryParts.com).



# COMFORT-AIRE BG-81H Owner's Manual

[Shop genuine replacement parts for COMFORT-AIRE  
BG-81H](#)



[Find Your COMFORT-AIRE Air Conditioner Parts - Select From 599 Models](#)

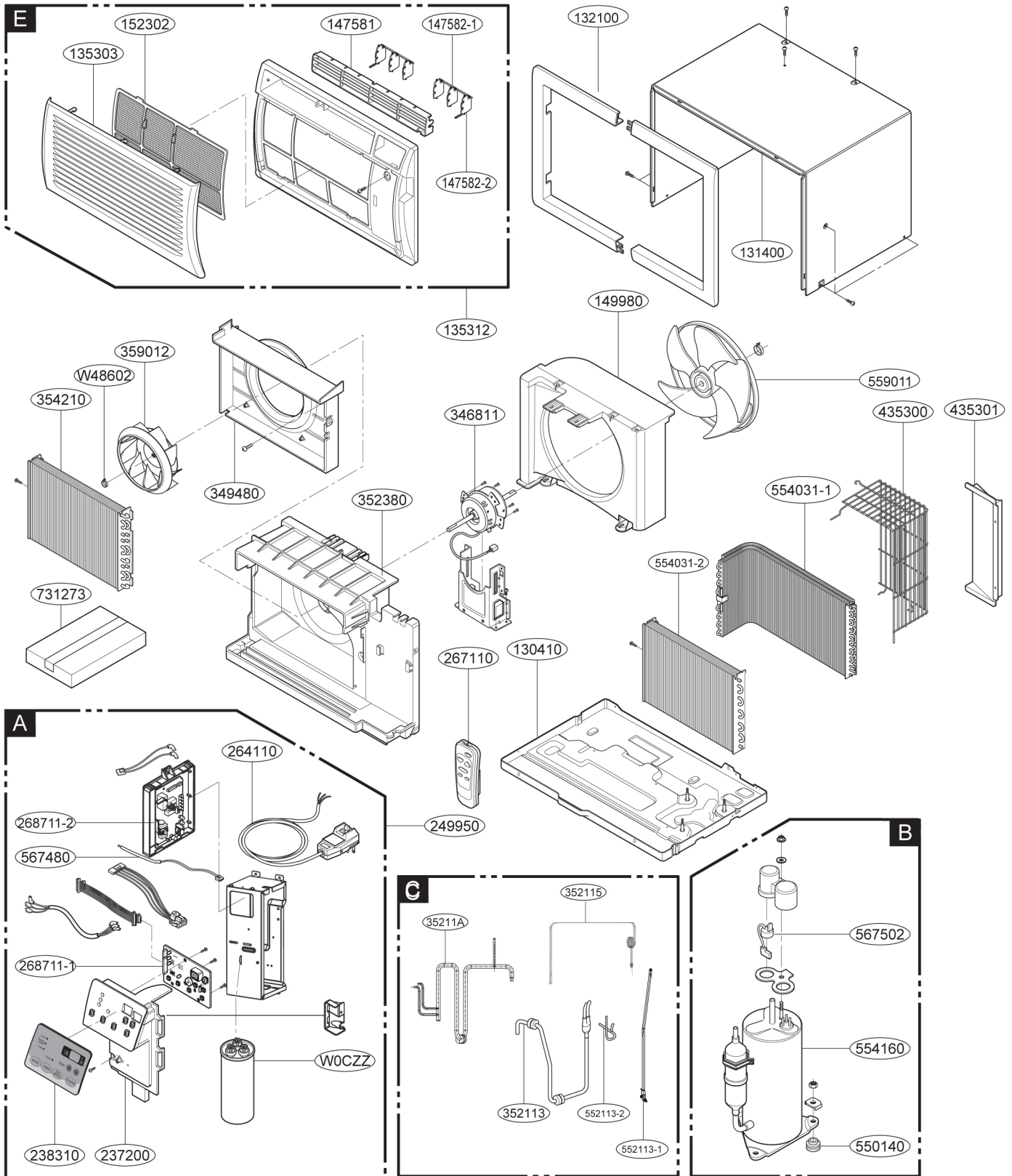
----- Manual continues below -----

HEAT CONTROLLER, INC.

# **REPLACEMENT PARTS LIST**

## **Room Air Conditioner: BG H-Series**

# EXPLODED VIEW



## BG-81H REPLACEMENT PARTS

Location	Part Description	Part No.
130410	Single Base Assembly	3041A10046J
352380	Air Guide Assembly	5239A10015D
349600	Motor Bracket	4980AR4395A
346811	AC Motor	4681A20175B
359012	Turbo Fan	5900A20009A
W48602	Spring Clamp	3H02932B
349480	Orifice	4948A20045A
149980	Shroud	4998A20003A
559011	Axial Fan Assembly	5900AR1173A
249950	Control Case Assembly	ABQ73187313
237200	Control Panel	MGC35987201
268711-2	Main PCB Assembly	EBR39264101
268711-1	Display PCB Assembly	EBR30852301
W0CZZ	Capacitor	6120AR2194K
264110	Power Cord Assembly	6411A20056T
567480	NTC Thermistor	6323A20004S
238310	Escutcheon	3831A10037F
135312	Front Grille Assembly	AEB72912701
135303	Inlet Grille	3530A10272A
147581	Horizontal Louver	4758A20058A
147582-1	Vertical Louver	4758A30045A
147582-2	Vertical Louver	4758A30045B
152302	Air Filter	5230A20041A
435300	Rear Grille	3530A20033B
435301	Rear Grille	MDX33964101
131400	Cabinet	3090A20017L
132100	Frame	3210A20075A
731273	Single Install Part Assembly	3127A20017E
267110	Remote Controller	6711A20093A
354210	First Evaporator Assembly	5421A20071K
352115	Evaporator (In) Tube Assembly	AJR73026001
35211A	Suction Tube Assembly	AJR73025801
552113	Condenser (Out) Tube Assembly	5211A20560N
352113	Discharge Tube Assembly	5211A21421N
554160	Compressor Set	TBZ34839301
567502	Overload Protect	EF34140251
550140	Compressor Damper	4H00982CA

## BG-101H REPLACEMENT PARTS

Location	Part Description	Part No.
130410	Single Base Assembly	AAN73212102
352380	Air Guide Assembly	AEC73117403
349600	Motor Bracket	4960A20008A
346811	AC Motor	4681A20041K
359012	Turbo Fan	5900A20009A
W48602	Spring Clamp	3H02932B
349480	Orifice	4948A20045A
149980	Shroud	4998A20003A
559011	Axial Fan Assembly	5900AR1173A
249950	Control Case Assembly	ABQ73187312
237200	Control Panel	MGC35987201
268711-2	Main PCB Assembly	EBR39264101
268711-1	Display PCB Assembly	EBR30852301
W0CZZ	Capacitor, Film, Box	0CZZA20007A
264110	Power Cord Assembly	6411A20056T
567480	NTC Thermistor	6323A20004S
238310	Escutcheon	3831A10037F
135312	Front Grille Assembly	AEB72912701
135303	Inlet Grille	3530A10272A
147581	Horizontal Louver	4758A20058A
147582-1	Vertical Louver	4758A30045A
147582-2	Vertical Louver	4758A30045B
152302	Air Filter	5230A20041A
435300	Rear Grille	3530A20101A
435301	Rear Grille	MDX33964101
131400	Cabinet	3090A20017L
132100	Frame	3210A20075A
731273	Single Install Part Assembly	3127A20017E
267110	Remote Controller Assembly	6711A20093A
354210	First Evaporator Assembly	ADL73081801
352115	Evaporator (In) Tube Assembly	5211A29024M
35211A	Suction Tube Assembly	5211A21428C
552113	Condenser (Out) Tube Assembly	5211A20560N
352113	Discharge Tube Assembly	5211A21421S
554160	Compressor Set	TBZ34841501
567502	Overload Protect	EF34140246
550140	Compressor Damper	4H00982C

## BG-103H REPLACEMENT PARTS

Location	Part Description	Part No.
130410	Single Base Assembly	3041A10046J
352380	Air Guide Assembly	AEC73117401
349600	Motor Bracket	4980AR4395A
346811	AC Motor	4681A20175A
359012	Turbo Fan	5900A20009A
W48602	Spring Clamp	3H02932B
349480	Orifice	4948A20045A
149980	Shroud	4998A20003A
559011	Axial Fan Assembly	5900AR1173A
249950	Control Case Assembly	ABQ73187314
237200	Control Panel	MGC35987201
268711-2	Main PCB Assembly	EBR39264102
268711-1	Display PCB Assembly	EBR30852301
W0CZZ	Capacitor, Film, Box	6120AR2194F
264110	Power Cord Assembly	6411A20056P
567480	NTC Thermistor	6323A20004S
238310	Escutcheon	3831A10037F
135312	Front Grille Assembly	AEB72912701
135303	Inlet Grille	3530A10272A
147581	Horizontal Louver	4758A20058A
147582-1	Vertical Louver	4758A30045A
147582-2	Vertical Louver	4758A30045B
152302	Air Filter	5230A20041A
435300	Rear Grille	3530A20101A
435301	Rear Grille	3530A20033B
131400	Cabinet	3090A20017L
132100	Frame	3210A20075A
731273	Single Install Part Assembly	3127A20017E
267110	Remote Controller Assembly	6711A20093A
354210	First Evaporator Assembly	ADL73081801
352115	Evaporator (In) Tube Assembly	5211A29024N
35211A	Suction Tube Assembly	5211A21428C
552113	Condenser (Out) Tube Assembly	5211A20560N
352113	Discharge Tube Assembly	5211A21421Y
554160	Compressor Set	TBZ35274601
567502	Overload Protect	EAF34140210
550140	Compressor Damper	4H00982C

## BG-123H REPLACEMENT PARTS

Location	Part Description	Part No.
130410	Single Base Assembly	AAN73212102
352380	Air Guide Assembly	AEC73117403
349600	Motor Bracket	4960A20008A
346811	AC Motor	4681A20041H
359012	Turbo Fan	5900A20009A
W48602	Spring Clamp	3H02932B
349480	Orifice	4948A20045A
149980	Shroud	4998A20003A
559011	Axial Fan Assembly	5900AR1173A
249950	Control Case Assembly	ABQ73187315
237200	Control Panel	MGC35987201
268711-2	Main PCB Assembly	EBR39264102
268711-1	Display PCB Assembly	EBR30852301
W0CZZ	Capacitor, Film, Box	2H01451M
264110	Power Cord Assembly	6411A20056P
567480	NTC Thermistor	6323A20004S
238310	Escutcheon	3831A10037F
135312	Front Grille Assembly	AEB72912701
135303	Inlet Grille	3530A10272A
147581	Horizontal Louver	4758A20058A
147582-1	Vertical Louver	4758A30045A
147582-2	Vertical Louver	4758A30045B
152302	Air Filter	5230A20041A
435300	Rear Grille	3530A20101A
435301	Rear Grille	MDX33964101
131400	Cabinet	3090A20017K
132100	Frame	3210A20075A
731273	Single Install Part Assembly	3127A20017E
267110	Remote Controller Assembly	6711A20093A
354210	First Evaporator Assembly	ADL73081801
352115	Evaporator (In) Tube Assembly	AJR33322505
35211A	Suction Tube Assembly	5211A21428H
552113	Condenser (Out) Tube Assembly	AJR73202701
352113	Discharge Tube Assembly	5211A21421V
554160	Compressor Set	TBZ34863001
567502	Overload Protect	EAF34140210
550140	Compressor Damper	4H00982C

## BG-143H REPLACEMENT PARTS

Location	Part Description	Part No.
130410	Single Base Assembly	3041A10046K
352380	Air Guide Assembly	AEC73117403
349600	Motor Bracket	4960A20008A
346811	AC Motor	4681A20041H
359012	Turbo Fan	5900A20009A
W48602	Spring Clamp	3H02932B
349480	Orifice	4948A20045A
149980	Shroud	4998A20003A
559011	Axial Fan Assembly	5900AR1173A
249950	Control Case Assembly	ABQ73187316
237200	Control Panel	MGC35987201
268711-2	Main PCB Assembly	EBR39264102
268711-1	Display PCB Assembly	EBR30852301
W0CZZ	Capacitor, Film, Box	6120AR2194K
264110	Power Cord Assembly	6411A20056P
567480	NTC Thermistor	6323A20004S
238310	Escutcheon	3831A10037F
135312	Front Grille Assembly	AEB72912702
135303	Inlet Grille	3530A10272A
147581	Horizontal Louver	4758A20058A
147582-1	Vertical Louver	4758A30045A
147582-2	Vertical Louver	4758A30045B
152302	Air Filter	5230A20041A
435300	Rear Grille	3530A20101A
435301	Rear Grille	MDX33964101
131400	Cabinet	3090A20017K
132100	Frame	3210A20075A
731273	Single Install Part Assembly	3127A20017E
267110	Remote Controller Assembly	6711A20093A
354210	First Evaporator Assembly	ADL73081801
352115	Evaporator (In) Tube Assembly	AJR73202701
35211A	Suction Tube Assembly	5211A21428E
552113	Condenser (Out) Tube Assembly	AJR73067805
352113	Discharge Tube Assembly	5211A21421V
554160	Compressor Set	TBZ34861801
567502	Overload Protect	EAF34140211
550140	Compressor Damper	4H00982C

Design, material, performance data and components  
subject to change without notice.

## HEAT CONTROLLER, INC.

1900 Wellworth Ave., Jackson, MI 49203 ♦ Ph. 517-787-2100 ♦ Fax 517-787-9341

THE QUALITY LEADER IN CONDITIONING AIR

**[www.heatcontroller.com](http://www.heatcontroller.com)**