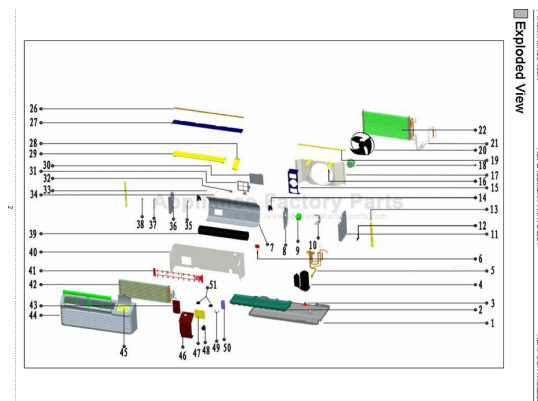


This Owner's Manual is provided and hosted by [Appliance Factory Parts](#).



COMFORT-AIRE PTHP15A130A Owner's Manual

[Shop genuine replacement parts for COMFORT-AIRE
PTHP15A130A](#)



[Find Your COMFORT-AIRE HVAC Parts - Select From 1486 Models](#)

----- Manual continues below -----

HEAT CONTROLLER

REPLACEMENT PARTS LIST

Packaged Terminal Air Conditioners & Heat Pumps

7,000-15,000 BTUH

Cooling with Electric Heat

PTAC07A130A

PTAC09A130A

PTAC12A130A

PTAC12A150A

PTAC15A150A

PTAC15A130A

Heat Pump with Electric Heat

PTHP07A130A

PTHP09A130A

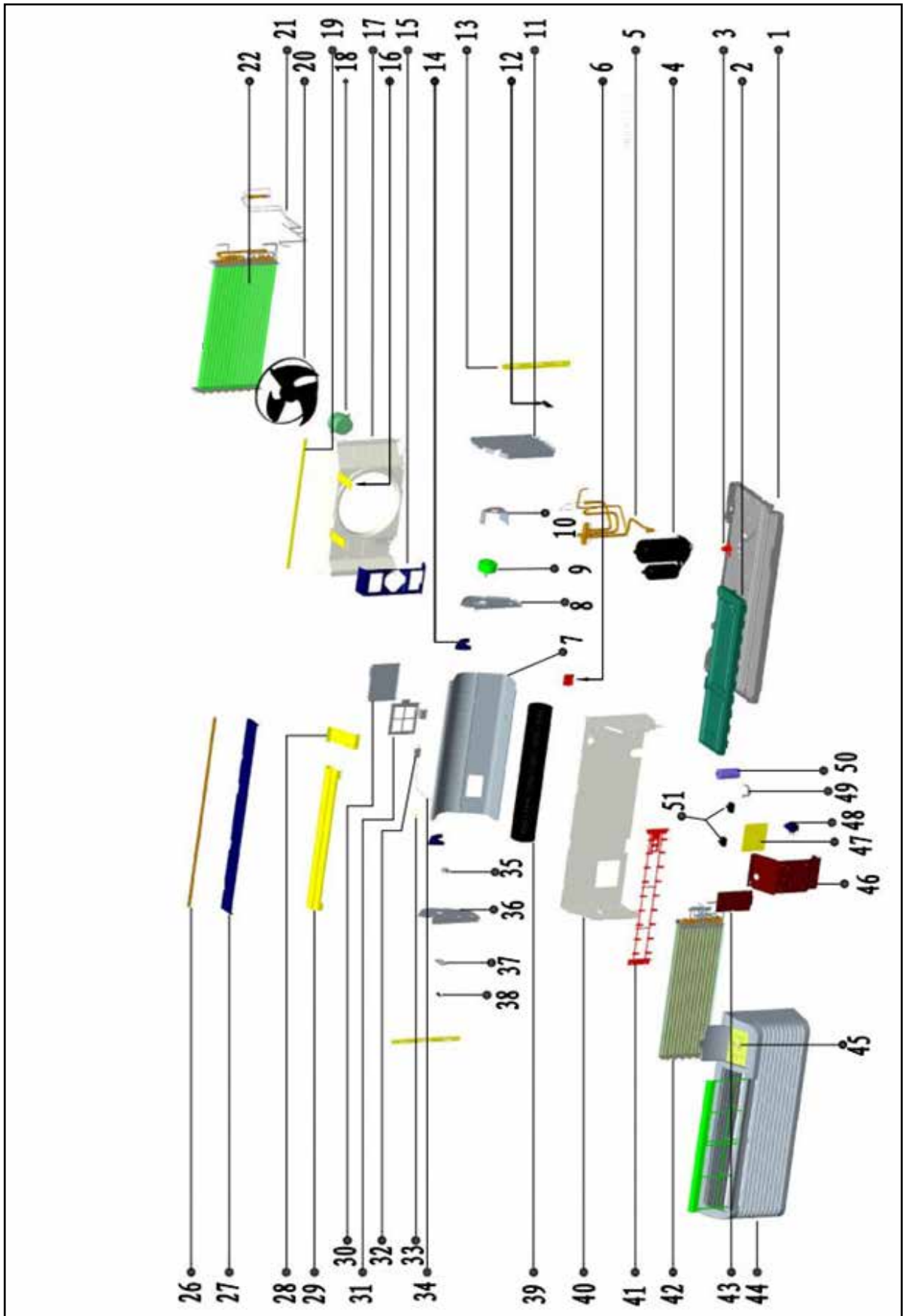
PTHP12A130A

PTHP12A150A

PTHP15A150A

PTHP15A130A

Exploded View



Generic Parts List

Location	Description	Part No.	Qty.
1	Base pan components assy	801220890133	1
2	Foam sub base	802220890006	1
3	Water disposal valve	801619900533	1
4	Compressor	801401400081	1
5	4-way valve ass'y	801620590206	1
5.1	4-way valve	801600100035	1
5.2	4-way valve coil	802401600614	1
6	Wiring press plate	801120890008	1
7	Air discharge duct	801220890153	1
8	Right side board assy of air duct	801220890157	1
9	Indoor single-axle motor	802400300024	1
10	Indoor motor support	801220890158	1
11	E-box left side board assy	801220890159	1
12	Groove clamp	801120890015	1
13	Left and right fixing clamp components	801220890167/801220890170	1
14	Left and right parts of air duct	801120890013/801120890014	1
15	Outdoor motor support	801220890144	1
16	Connection plate	801220890166	2
17	Wind inlet guide	801120890019	1
18	Outdoor single-axle motor	802400400487	1
19	Wind inlet guide plate	801220890190	1
20	Propeller fan/outdoor axial fan blade	801120890009	1
21	One-way valve ass'y	801620590208	1
21.1	One-way valve	801600300055	1
22	Condenser coil	801520890038	1
26	Front panel bracket strip	801220890164	1
27	Top cover fasten strip	801220890179	1
28	Seal board 2	801220890177	1
29	Air outlet	801220890172	1
30	Fresh air inlet cover	801220890150	1
31	Fresh air inlet filter	801120890010	1
32	Fresh air inlet support	801220890151	2
33	Fresh air inlet groove clamp	801120890017	1
34	Fresh air inlet spring and tube	802920890004/801120890028	1
35	Fixing board of bearing holder	802720890002/801220890156	1
36	Left side board assy of air duct	801220890155	1
37	Fresh air inlet rail	801120890012	1
38	Fresh air inlet lever	801120890011	1
39	Cross-flow fan/blower wheel	802920890005	1
40	Center plate assy	801220890148	1
41	Electric heater	802402000102	1
42	Evaporator coil	801520590052	1
	Thermostat connecting adapter	802420890009	1
	Harness between board and thermostat terminal strip	802420890033	1

Generic Parts List

Location	Description	Part No.	Qty.
43	Sealing board assy	801220890175	1
44	Front panel cover assy	801120890020	1
44	HC Customized front panel cover(Comfort-aire/Century)	801120890020	1
44.1	Front panel cover	801120890021	1
44.2	Front panel bracket clamp	801220890192	2
44.3	Cover filter	801120890022	2
44.4	Control board direction grid	801120890023	1
44.5	Air outlet grid	801120890024	1
44.6	Control panel ass'y	801120890025	1
44.6	HC Customized Century control panel ass'y	80112089A025	1
45	Display board assy	803320890024	1
	Display board	803300400018	
45.1	Electrical box	801120890026	1
45.2	Control pad	802020890070	1
45.2	HC Customized Control pad	8020208A0156	1
46	Electrical box flip	801220890162	1
47	PCB/Main board	803300300892	1
	PCB/Main board-For units built after 12/31/14 that do have "N" connection for electric heat on pc board, use	803300300957	1
48	Transformer	802300200068	1
49	Capacitor clamp	801200100002	1
50	Compressor capacitor	802420490001	1
51	Indoor motor capacitor	802419900166	1
51	Outdoor motor capacitor	802401100039	1
52	Air outlet protection grid	802920890003	1
54	Indoor temp. sensor	802300400077	1
55	Outdoor temp. sensor	802300400129	1
56	Connection plate	801220890139	1
57	Air return temp. sensor	802300400128	1
58	20amp LCDI power cord	802420690004	1
59	Compressor connecting wire	802421290011	1
60	Refridgerant	800500100004	0.78KG

Remote control does not come with the unit, must be purchased separately.

Accessory

Location	Description	Part No.	Qty.
53	Remote control assy (remote control, 2 batteries)	7602-512	1

Parts List

Description	Part No.
Compressor(07) for 7K BTU model	80140160003
Compressor (09) for 9k BTU model	801401400081
Compressor (12) for 12k BTU model	801401400105
Compressor(15) for 15k BTU model	801401400106
Blower wheel	802920890005
Indoor motor for 7k/9k Btu model	802400300024
Indoor motor for 12k/15k Btu model	802400300023
Outdoor motor	802400400487
Outdoor axial fan for all model	801120890009
Transformer	802300200068
Electric (MB) PTAC-MB-C-C-P104	803300300892
Control Pad/Membrane	802020890070
HC Customized Control pad	8020208A0156
Control panel	801120890025
HC Customized Century/Comfort-aire control panel	80112089A025
Compressor Capacitor for 7k Btu model	802401000023
Compressor Capacitor for 9k Btu model	802420490001
Compressor Capacitor for 12k Btu model	802420490006
Compressor Capacitor for 15k Btu model	802420490009
Indoor Temp. Sensor	802300400077
Outdoor Temp. Sensor	802300400129
Air Return Temp Sensor	802300400128
Capacitor Indoor Motor for 9k&12k&15k Btu model	802419900166
Capacitor Outdoor Motor for 9k&12k&15k Btu model	802401100039
Thermostat (snap disc)	802301000062
Fuse	802300700016
Cover filter for all model	801120890022
30 amp cord - 150A	802420690010
20 amp cord - 130A	802420690004
Display Board	803300400018
Reversing valve for 9k&12k&15k Btu model	801600100035
High pressure switch	802300900041
Drain kit assy	820055000214
Thermostat connecting wiring 1 harness in accessory bag	802420890009
Thermostat connecting wiring 2 harness,connected to PCB	802420890033
HC Customized front panel(Century/Comfort-aire)	801120890020

Notice: Blue marking means different key components as model cooling capacity difference
 Yellow marking means HC customized parts
 Exploded view shows all most complete common components of 1 PTAC chassis in detail

Due to ongoing product improvements, specifications and dimensions are subject to change and correction without notice or incurring obligations. Determining the application and suitability for use of any product is the responsibility of the installer. Additionally, the installer is responsible for verifying dimensional data on the actual product prior to beginning any installation preparations.

Incentive and rebate programs have precise requirements as to product performance and certification. All products meet applicable regulations in effect on date of manufacture; however, certifications are not necessarily granted for the life of a product. Therefore, it is the responsibility of the applicant to determine whether a specific model qualifies for these incentive/rebate programs.

HEAT CONTROLLER

1900 Wellworth Ave., Jackson MI 49203 • Ph. 517-787-2100 • www.heatcontroller.com

A  Company