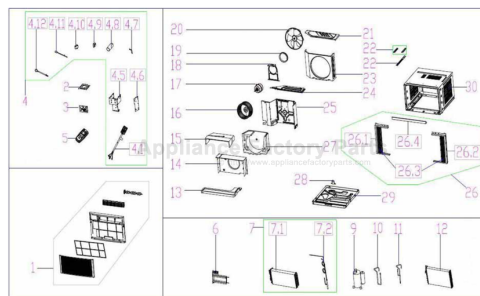


This Owner's Manual is provided and hosted by [Appliance Factory Parts](http://ApplianceFactoryParts.com).



# COMFORT-AIRE CGREG-123H Owner's Manual

[Shop genuine replacement parts for COMFORT-AIRE  
CGREG-123H](#)



[Find Your COMFORT-AIRE HVAC Parts - Select From 1486 Models](#)

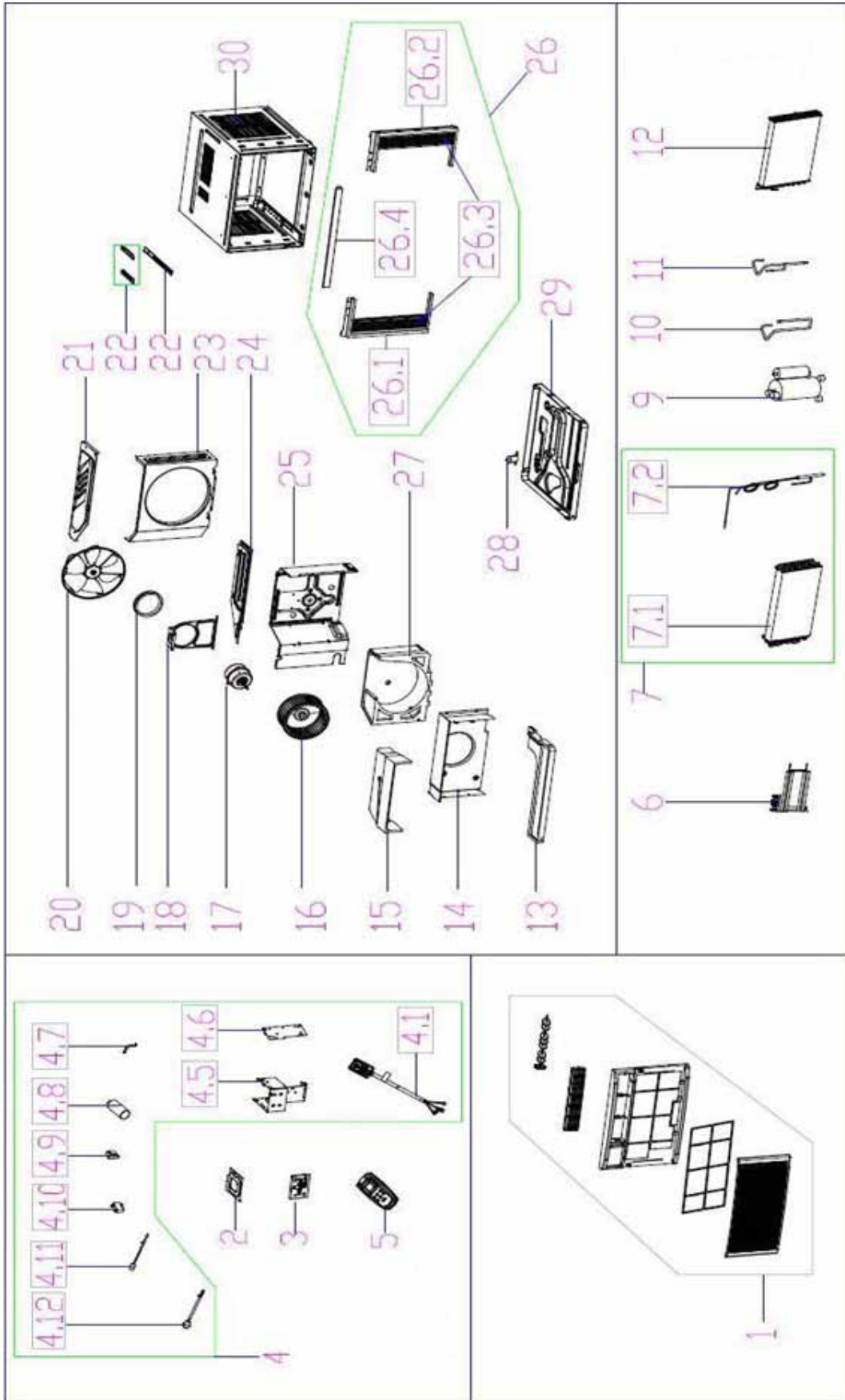
----- Manual continues below -----

HEAT CONTROLLER, INC.

# **REPLACEMENT PARTS LIST**

## **Commercial Room Air Units CGREG-123H**

# EXPLODED VIEW



# REPLACEMENT PARTS

Location	Part Name	Quantity	Part No.
1	Panel assembly	1	2011213A0121
1.1	Front panel	1	2011213A0129
1.2	Panel frame	1	2011213A0131
2	Cover of electronic control box	1	201221390055
3	Display box assembly	1	2033219A0364
4	Electronic control box assembly	1	2033217A0351
4.1	Power cord	1	202419990025
4.5	Electronic control box	1	201221390056
4.6	Main control board assembly	1	201321790112
4.7	Capacitor clip	1	201200100038
4.8	Capacitor of compressor	1	202401000508
4.9	Transformer	1	202300900140
4.10	Capacitor of fan motor	1	202401100407
4.11	Ambient temperature sensor assembly	1	202301300210
4.12	Pipe temperature sensor assembly	1	202301300077
5	Remote controller	1	2033550A6383
6	Electric heater	1	202403100268
7	Evaporator coil assembly	1	201521790268
7.1	Evaporator	1	201521790208
7.2	Capillary assembly	1	201621791077
9	Compressor	1	201402000480
10	Suction pipe assembly	1	201621790456
11	Discharge pipe assembly	1	201621791081
12	Condenser assembly	1	201521590089
13	Condenser water tray	1	202221790011
14	Air-inlet board	1	201221390167
15	Upper volute shell	1	202621390026
16	Centrifugal fan	1	201100100026
17	Asynchronous motor	1	202400401128
18	Supporter assembly of fan motor	1	201221390046
19	Washer for motor bracket	1	202721390004
20	Axial flow fan	1	201100300023
21	Rear cover	1	201221790106
22	Connecting board	1	201221390045
22	Connecting board	2	201221790102
23	Rear separating	1	201221390125
24	Front cover	1	201221390054
25	Front separating board	1	201221790103
26	Installation accessory	1	2028213A0011
26.1	Left shutter frame	1	2011213A0118
26.2	Right shutter frame	1	2011213A0119
26.3	Shutter	2	2011217A0796
26.4	Top shutter frame	1	2012213A0023
27	Volute Shell	1	202221390001
28	Drain valve	1	202301610703
29	Chassis assembly	1	2012213A0022
30	Cabinet assembly	1	2012213A0021

Design, material, performance data and components  
subject to change without notice.

## HEAT CONTROLLER, INC.

1900 Wellworth Ave., Jackson, MI 49203 • Ph. 517-787-2100 • Fax 517-787-9341

THE QUALITY LEADER IN CONDITIONING AIR

[www.heatcontroller.com](http://www.heatcontroller.com)