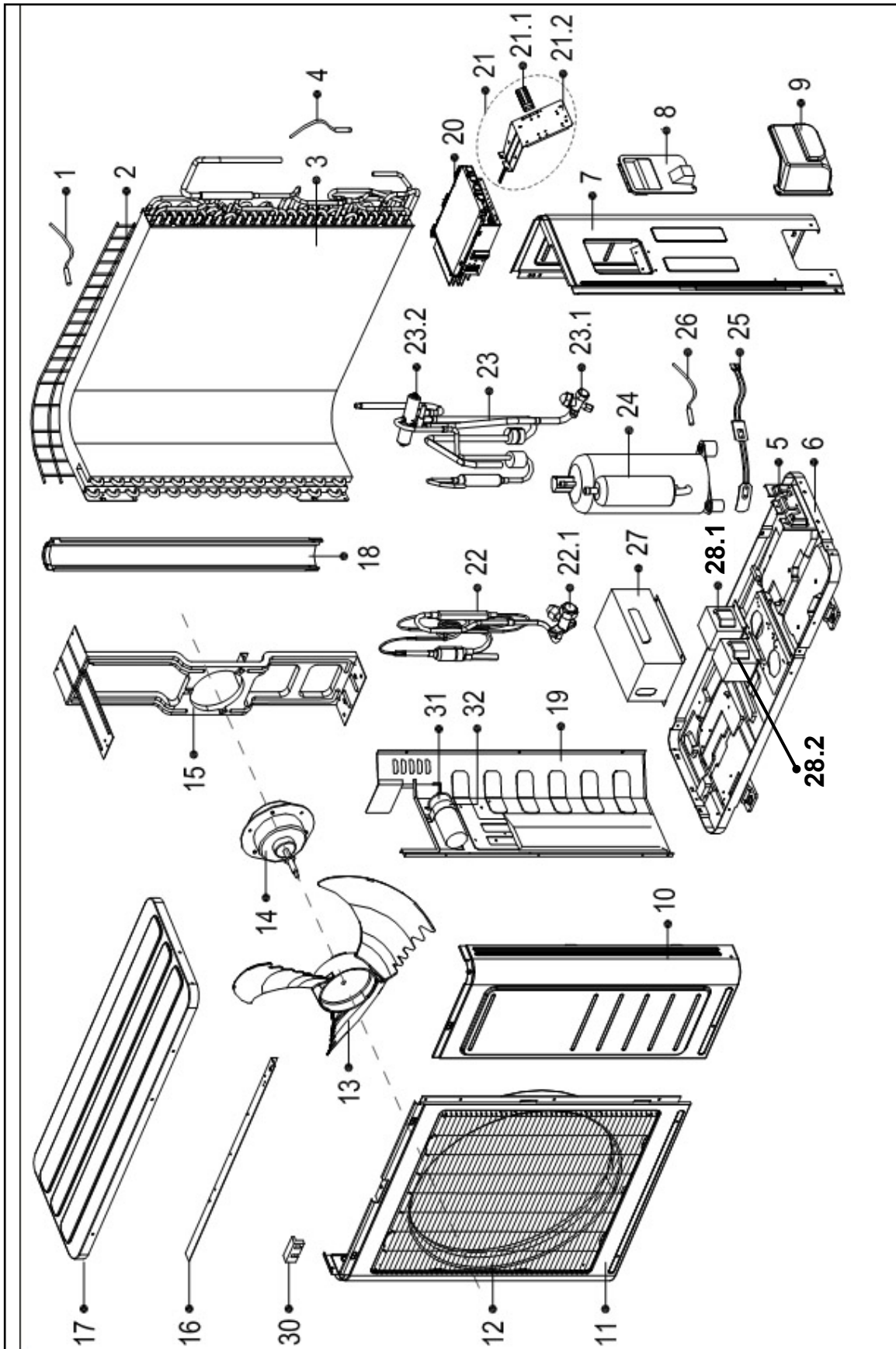


HEAT CONTROLLER

**REPLACEMENT  
PARTS LIST**

**Single Zone Inverter Mini-Splits**  
A-DVH24SD-1  
**Outdoor Condenser**

# EXPLODED VIEW



# REPLACEMENT PARTS

Location	Part Name	Quantity	Part No.
1	Ambient temperature sensor assembly	1	202301310075
2	Rear net	1	2011481G0001
3	Condenser assembly	1	201537990071
4	Pipe temperature sensor assembly	1	202440500004
5	Valve plate	1	201237300285
6	Chassis assembly	1	201257090043
7	Rear right clapboard assembly	1	201237890100
8	Big handle	1	201237390104
10	Front right clapboard assembly	1	201248100389
11	Front panel	1	201248100390
12	Air outlet grille	1	201138090006
13	Axial flow fan	1	201100320622
14	Asynchronous motor	1	202400401241
15	Supporter assembly of fan motor	1	2012481G0039
16	Rear supporter	1	201248100384
17	Top cover assembly	1	201248100363
18	Left supporter	1	201248100367
19	Partition board assembly	1	201237790031
20	Electronic control box assembly	1	2033380A1767
21	Terminal board assembly	1	203337990161
21.1	Wire joint	1	202301400256
21.2	Terminal board	1	201237890064
22	Liquid valve assembly	1	201638091046
22.1	Liquid valve	1	201600740704
23	4-way valve assembly	1	201638091048
23.1	Gas valve	1	201600720296
23.2	4-Ways valve	1	201600690011
24	Compressor	1	201400600530
25	Crankcase electric heater	1	202403100501
26	Discharge temperature sensor assembly	1	202301310068
27	Cover of inductance (reactor cover)	1	201248090001
28.1	Reactor	1	202301050026
28.2	Reactor	1	202301000819
30	Clamp of front net	8	201135110801
31	Capacitor of compressor 35/440	1	202401000612
32	Capacitor clip	1	201200100026

*Design, material, performance data and components subject to change without notice.*

# HEAT CONTROLLER

1900 Wellworth Ave., Jackson MI 49203 • Ph. 517-787-2100 • [www.heatcontroller.com](http://www.heatcontroller.com)

A  Company