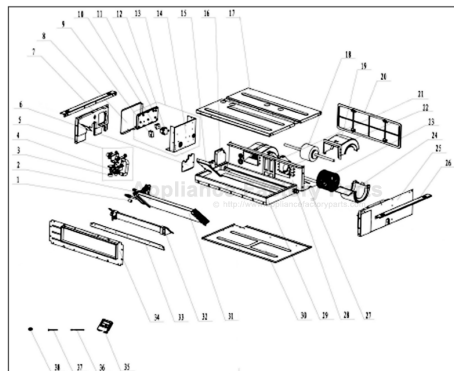


This Owner's Manual is provided and hosted by [Appliance Factory Parts](#).



# COMFORT-AIRE B-VFH09DA-1 Owner's Manual

[Shop genuine replacement parts for COMFORT-AIRE  
B-VFH09DA-1](#)



[Find Your COMFORT-AIRE HVAC Parts - Select From 1486 Models](#)

----- Manual continues below -----

---

*Comfort-Cire*®

**Century**®

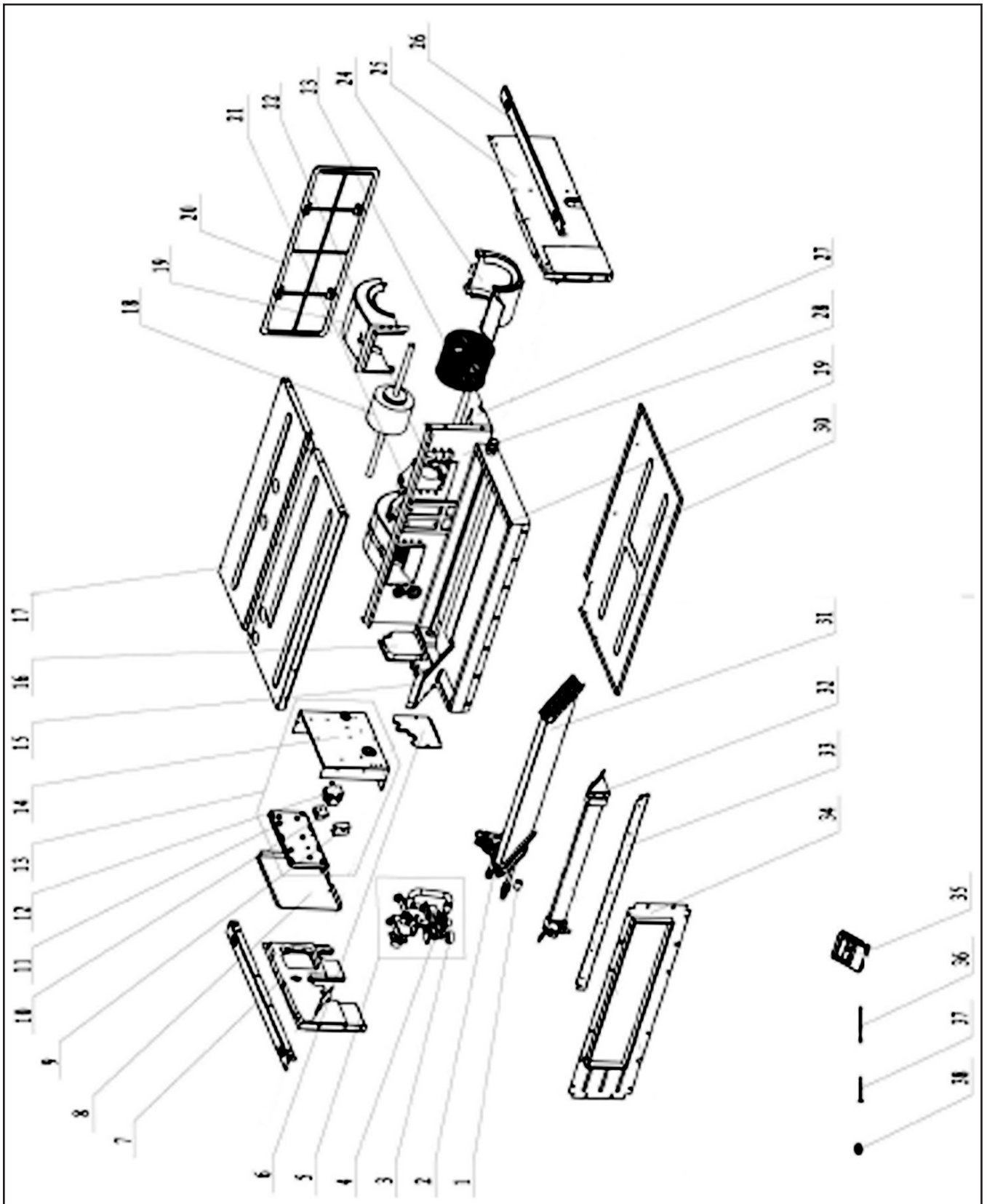
**MARS**®  
Delivering Confidence

---

REPLACEMENT PARTS LIST

**InverterFlex Series®**  
**Indoor Ducted Mini-Split**  
B-VFH09DA-1  
**Heat Pumps**

# EXPLODED VIEW



## REPLACEMENT PARTS

Location	Part Name	Quantity	Part No.
1	Filter Sub-Assy	1	11120012
2	Strainer	1	07212001
3	Water Level Switch	1	45020216
4	Water Pump	1	43130324
5	Water Pump Assy	1	15405200082
6	Sealplate sub-assy (outlet)	1	01495316
7	Left Side Plate Assy	1	01315334
8	Electric Box Cover	1	01424253
9	Capacitor CBB61	1	33010020
10	Terminal Board	1	420111041
11	Main Board	1	30226338
12	Transformer	1	4311023303
13	Electric Box Assy	1	01395200034
14	Electric Box Sub-Assy	1	01395200071
15	Sealplate sub-assy (evaporator)	1	01495317
16	Sealplate sub-assy (drainage)	1	01495315
17	Top Cover Board Assy	1	01265200099
18	Fan Motor	1	1570520102
19	Front Volute Casing	2	26905205
20	Filter Sub-Assy	1	11725209
21	Motor Support	1	01804348
22	Bar Clasp	4	70819522
23	Centrifugal Fan	2	10425200
24	Rear Volute Casing	2	26905206
25	Right Side Plate Assy	1	01315335
26	Supporter	2	01895225
27	Cover board (Fan motor)	1	01265300
28	Fan Motor Mounting Plate Sub-Assy	1	01325200007
29	Water Tray Assy	1	01285332
30	Bottom Cover Plate	1	01265299
31	Evaporator Assy	1	01025200024
33	Cover of air outlet	1	01265298
34	Air outlet frame assy	1	01865216
35	Wired Stat	1	30296317L08294
36	Ambient Temperature Sensor	1	39000206
37	Temperature Sensor	1	390001982G
38	Choke Plug of Drain Pipe	1	76815214

---

Due to ongoing product improvements, specifications and dimensions are subject to change and correction without notice or incurring obligations. Determining the application and suitability for use of any product is the responsibility of the installer. Additionally, the installer is responsible for verifying dimensional data on the actual product prior to beginning any installation preparations.

Incentive and rebate programs have precise requirements as to product performance and certification. All products meet applicable regulations in effect on date of manufacture; however, certifications are not necessarily granted for the life of a product. Therefore, it is the responsibility of the applicant to determine whether a specific model qualifies for these incentive/rebate programs.

*Comfort-Cire*®  **Century**®

1900 Wellworth Ave., Jackson, MI 49203 • Ph. 517-787-2100 • [www.marsdelivers.com](http://www.marsdelivers.com)

