
Comfort-Cire®

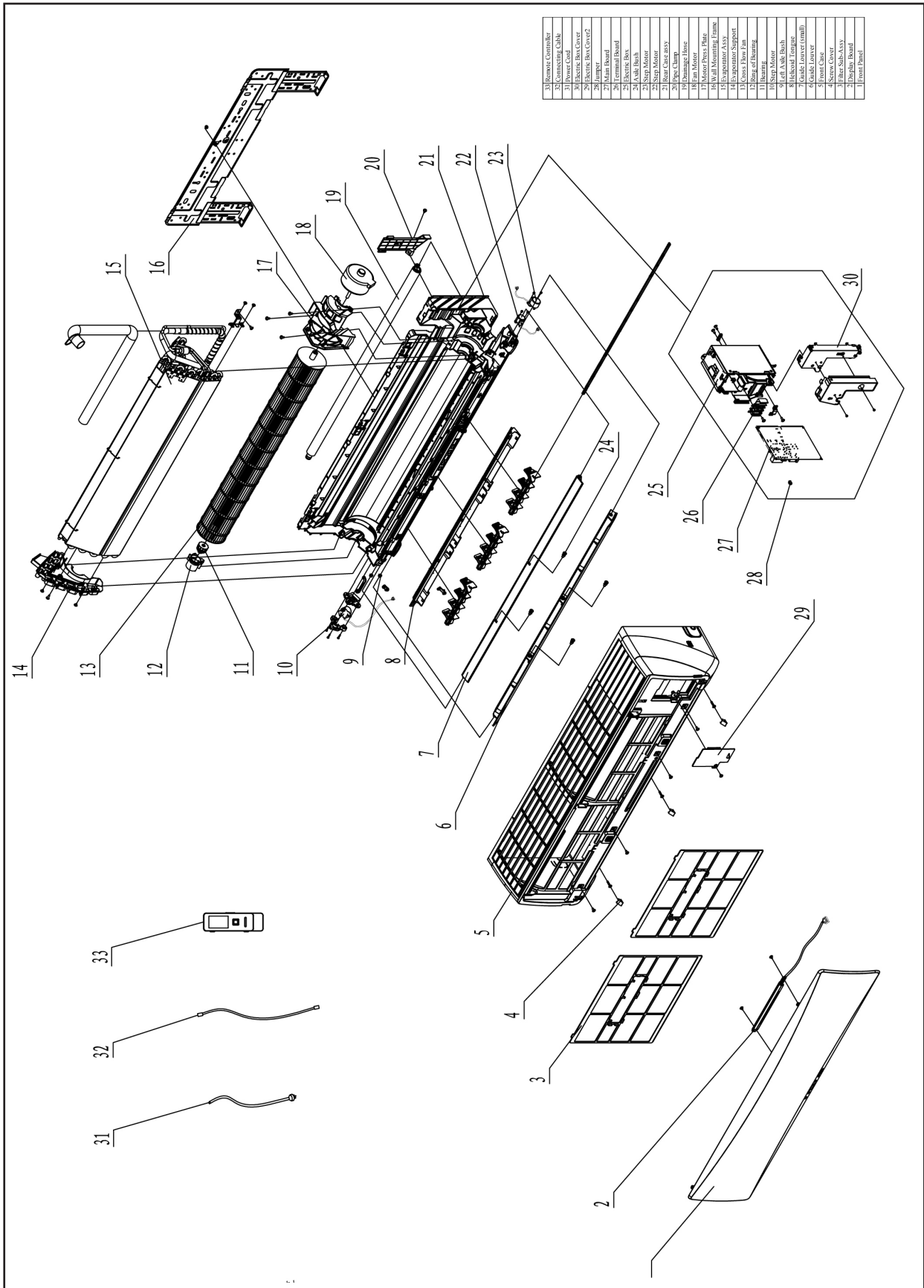
 **Century**®

MARS
Delivering Confidence

REPLACEMENT PARTS LIST

InverterFlex Series®
Indoor Ductless Mini-Split
B-VFH18MA-1
Heat Pumps

EXPLODED VIEW



33	Remote Controller
32	Power Cord
31	Power Cord
30	Electric Box Cover
29	Electric Box Cover2
28	Blower
27	Blower
26	Blower
25	Electric Box
24	Sub-ASSEMBLY
23	Step Motor
22	Step Motor
21	Step Motor
20	Step Motor
19	Blower
18	Blower
17	Motor Press Plug
16	Motor Press Plug
15	Motor Press Plug
14	Motor Press Plug
13	Motor Press Plug
12	Motor Press Plug
11	Motor Press Plug
10	Motor Press Plug
9	Motor Press Plug
8	Motor Press Plug
7	Motor Press Plug
6	Motor Press Plug
5	Motor Press Plug
4	Motor Press Plug
3	Sub-ASSEMBLY
2	Display Board
1	Front Panel

REPLACEMENT PARTS

Location	Part Name	Quantity	Part No.
1	Front Panel Assy	1	20022287_L08294
2	Display Board	1	30565210
3	Filter Sub-Assy	2	1112209105
4	Screw Cover	3	242520179
5	Front Case	1	2001282101
6	Guide Louver	1	1051228301
7	Guide Louver (small)	1	1051222601
8	Helicoid Tongue	1	2611236701
9	Left Axile Bush	2	1051203701
10	SteppingMotor	1	1501208602
11	O-Gasket of Cross Fan Bearing	1	76512203
12	Ring of Bearing	1	26152025
13	Cross Flow Fan	1	10352045
14	Evaporator Support	1	24212139
15	Evaporator Assy	1	0100238601_L08294
16	Wall Mounting Frame	1	01252123
17	Motor Press Plate	1	26112330
18	Fan Motor	1	1501212701
19	Drainage Hose	1	0523001406
20	Connecting pipe clamp	1	26112188
21	Rear Case assy	1	22202499
22	Stepping Motor	1	15212404
23	Stepping Motor	1	1521212901
24	Axile Bush	2	10542036
25	Electric Box Assy	1	20402461
26	Terminal Board	1	42011233
27	Main Board	1	30148469
28	Jumper	1	4202300115
29	Electric Box Cover2	1	2012214208
30	Electric Box Cover	1	2012240903
33	Remote Controller	1	30510138L08294
34	Temperature Sensor	1	390000451
35	Temperature Sensor	1	390000598
-	Remote Control Holder	1	26150008

Due to ongoing product improvements, specifications and dimensions are subject to change and correction without notice or incurring obligations. Determining the application and suitability for use of any product is the responsibility of the installer. Additionally, the installer is responsible for verifying dimensional data on the actual product prior to beginning any installation preparations.

Incentive and rebate programs have precise requirements as to product performance and certification. All products meet applicable regulations in effect on date of manufacture; however, certifications are not necessarily granted for the life of a product. Therefore, it is the responsibility of the applicant to determine whether a specific model qualifies for these incentive/rebate programs.



1900 Wellworth Ave., Jackson, MI 49203 • Ph. 517-787-2100 • www.marsdelivers.com

