

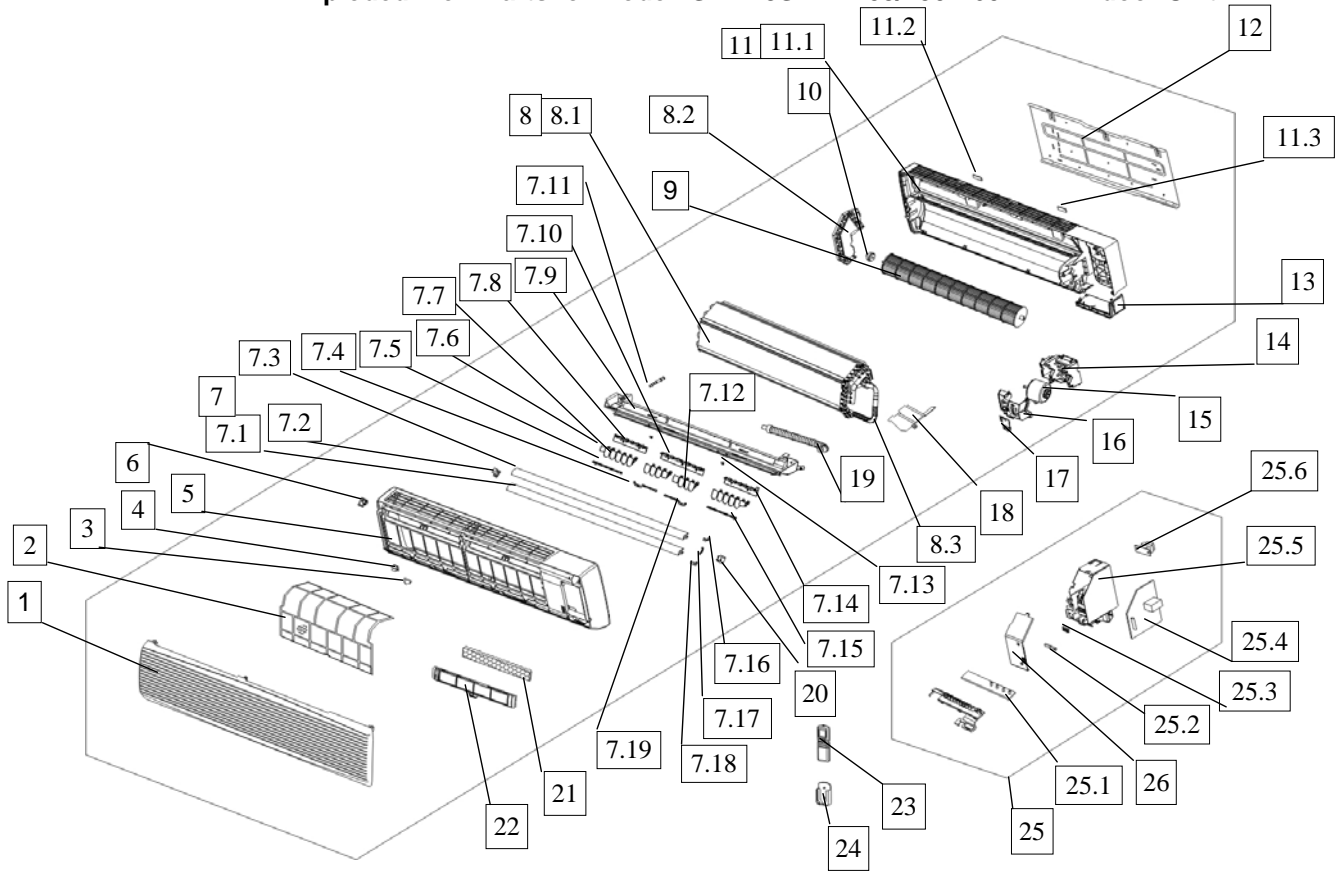
HEAT CONTROLLER, INC.

REPLACEMENT
PARTS

SMH18SA-1

**Mini-Split Air Conditioner
Heat Pump**

Exploded View Parts for Model: SMH18SA-1 208/230V 60Hz Indoor Unit



SMH18SA-1 Indoor Unit

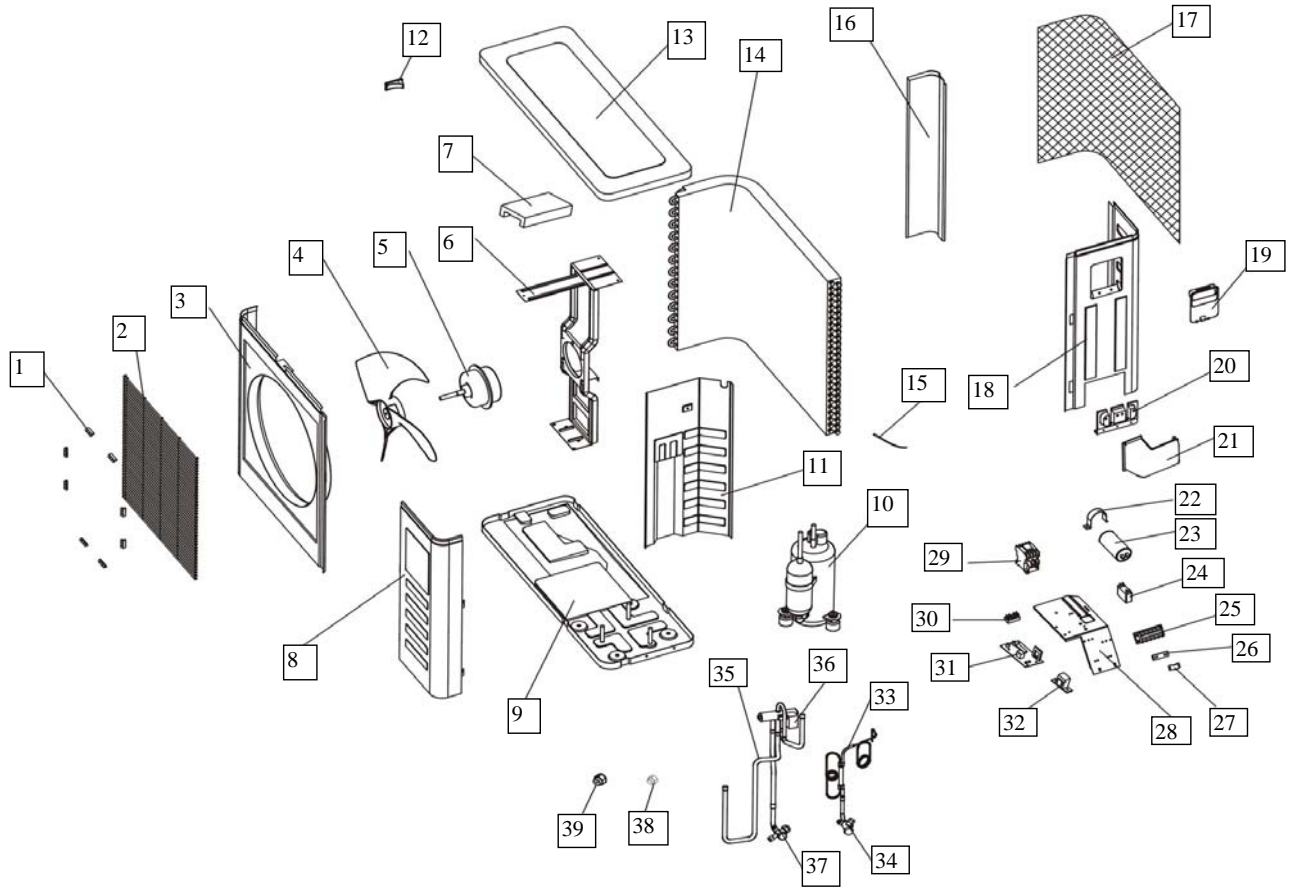
No	Name	Quantity	Part Number
1	Front panel	1	10336111001
2	Air filter	2	10336111002
3	Screw cap	3	10336111003
4	Down clap for panel frame	4	10336111004
5	Panel frame	1	10336111005
6	Up clap for panel frame	2	10336111006
7	Air out frame assy	1	10336111007
7.1	Horizontal louver, down	1	10336111008
7.2	Left bush for horizontal louver	1	10336111009
7.3	Horizontal louver, up	1	10336111010
7.4	Louver connecter, middle-left	1	10336111011
7.5	Louver connecter, left	1	10336111012
7.6	Vertical louver, small size	2	10336111013
7.7	Vertical louver, large size	12	10336111014
7.8	Louver holder, left	1	10336111015
7.9	Air out frame	1	10336111016
7.10	Louver holder, middle	1	10336111017
7.11	Stopples	1	10336111018
7.12	Vertical louver, middle size	2	10336111019
7.13	Bush	4	10336111020
7.14	Louver holder, right	1	10336111021
7.15	Louver connecter, right	1	10336111022
7.16	Swing bar for up horizontal louver	1	10336111023
7.17	Connector for horizontal louver	1	10336111024
7.18	Swing bar for down horizontal louver	1	10336111025
7.19	Louver connecter, middle-right	1	10336111026
8	Evaporator assy	1	10336111062
8.1	Evaporator I	1	10336111063
	Evaporator II	1	10336111064
	Evaporator III	1	10336111065
	Evaporator IV	1	10336111066
	Right holder for evaporator	1	10336111032
8.2	Left holder for evaporator	1	10336111033
8.3	Input pipe for evaporator	1	10336111067
	Output pipe for evaporator	1	10336111068
9	Cross flow fan, assy	1	10336111036
10	Bearing holder	1	10336111037
11	Chassis assy	1	10336111038
11.1	Chassis	1	10336111039
11.2	Left rear cover for chassis	1	10336111040

SMH18SA-1 Indoor Unit

No	Name	Quantity	Part Number
11.3	Right rear cover for chassis	1	10336111041
12	Installation plate	1	10336111042
13	Corner board for chassis	1	10336111043
14	Base for motor	1	10336111044
15	Fan motor	1	10336111069
16	Cover for motor	1	10336111046
17	Small cover for motor	1	10336111047
18	Waterproof board	1	10330112015
19	Drain hose	1	31607111010
20	Louver motor	1	10336111050
21	Air cleaner	1	10336111051
22	Air cleaner holder	1	10336111052
23	Remote controller (FAHRENHEIT)	1	10321121031
24	Holder for remote controller	1	10109121208
25	E-parts assy	1	10321111814
25.1	Display board	1	10336121002
25.2	Wire joint, 4p	1	10609111006
25.3	Wire clamp	1	10336111056
25.4	Main control board	1	10321111815
25.5	E-Parts box	1	10336111058
25.6	Transformer	1	10336111072
25.7	Indoor temp sensor	1	10109121243
25.8	Evaporator temp sensor	1	10109121242
26	E-part box cover	1	10336111059
27	Bottom cover for e-box	1	10336111060
28	Clamp for temp sensor	1	10109121231
29	Protector for temp sensor	1	10112121224
30	Copper nut, GLM-C03	1	10336111073
31	Copper nut, GLM-A01	1	10336111074

Part Name	Quantity	Part Number
Remote Controller (CELSIUS)	1	10109121207

Exploded View Parts for Model SMH18SA-1 208/230V,60Hz : Outdoor Unit



SMH18SA-1 Outdoor Unit

No.	Part Name	Quantity	Part Number
1	Clamp for front net	8	10112121801
2	Front net	1	10118121801
3	Front clapboard	1	53618121801
4	Propeller fan	1	10118121804
5	Fan Motor	1	10118123801
6	Holder for fan motor	1	10118121809
7	Foam over holder for motor	1	10118121807
8	Front right clapboard	1	10118121803
9	Chassis	1	10122113803
10	Compressor	1	10336111818
11	Separating board	1	10124111808
12	Little Handle	1	10830121811
13	Cover	1	10118121827
14	Condenser	1	13821121801
15	Outdoor pipe temp sensor	1	11442122804
16	Left clapboard	1	10924121808
17	Rear Net	1	10924121809
18	Rear right clapboard	1	10309121010
19	Big Handle	1	10309121003
20	Installation plate for valves	1	10118113805
21	Water collector	1	10118121832
22	Capacitor Clamp	1	10112121814
23	Compressor capacitor	1	50418121802
24	Fan motor capacitor	1	10109121819
25	Wire joint	1	10309121011
26	Washer for wire joint	1	10112121817
27	Clamp for wiring	1	10118121823
28	Installation board for E-parts	1	13821111803
29	Contacto	1	10121121806
30	Wire joint for multiplexer	1	10121121809
31	Main control board	1	15024121801
32	Transformer	1	11018121010
33	High Pressure Valve Ass'y	1	10321111816
34	Liquid pipe valve	1	50118121802
35	Low Pressure Valve Ass'y	1	10321111817
36	4-way valve	1	12812121801
37	Low Pressure Valve	1	50118121803
38	Copper nut, TLM-A01	1	10909121012
39	Copper nut, TLM-C03	1	10912121019

**Design, material, performance data and components
subject to change without notice.**

HEAT CONTROLLER, INC.

1900 Wellworth Ave Jackson, Michigan 49203 • Ph. 517-787-2100 • F x 517-787-9341

THE QUALITY LEADER IN CONDITIONING AIR

www.heatcontroller.com